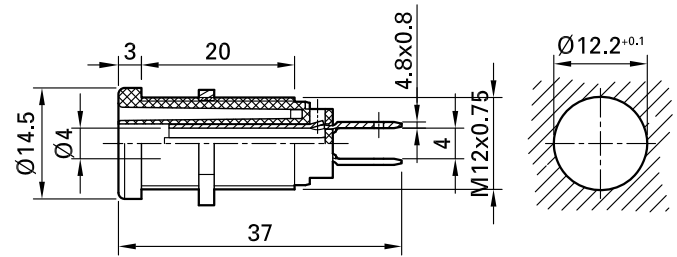


XEB-1R



Item number 66.9131-*

Insulated, rigid, Ø 4 mm, accepting spring-loaded Ø 4 mm plugs with rigid insulating sleeve. Brass sheet. The socket consists of two insulated, semi-circular contacts, which are connected to each other when a plug is inserted (switch function). The socket is screwed into pre-drilled panels

of plastic, metal, etc. 2 x Flat connecting tab 4.8 mm x 0.8 mm.

Technical data	
Diameter of plug system	4 mm
Rated Values	1000 V, CAT IV, 20 A
Surface treatment electrical contact	Ni
Base material electrical contact	CuZn
Standard color(s) *	20 21 22 23 24 25 26 29
Thread	M12x0,75
Test accessory acc. to	IEC EN 61010-2-030
Supplied assembly material	GEW.12-MUTTER
Remarks	Accessories: Flat connecting receptacle FSH4,8x0,8; Tube spanner SS2; Tube spanner SS425
Approvals	UR

X-ON Electronics

Largest Supplier of Electrical and Electronic Components

Click to view similar products for [Test Plugs & Test Jacks](#) category:

Click to view products by [STAUBLI](#) manufacturer:

Other Similar products are found below :

[01-2601-4-0210](#) [01-2601-4-0212](#) [01-2604-4-0212](#) [01-2150-1-0312](#) [01-2350-1-02](#) [01-2368-1-02](#) [01-2604-5-0212](#) [01-2606-4-0210](#) [01-2606-4-0212](#) [01-2606-5-0212](#) [M39024/11-09G](#) [M39024/11-42](#) [M39024/11-43](#) [M39024/12-08](#) [707-5311](#) [707-5402-01-19](#) [707-5410](#) [R644543000](#) [R948161000](#) [1408-4](#) [1533-1](#) [1659559](#) [1659567](#) [1663921](#) [1663939](#) [1696-102](#) [174-R825B-EX](#) [211-101](#) [RS100GBL](#) [RS250GBL](#) [251-102](#) [25-2251-2-03](#) [25-2259-2-03](#) [923743-28-I](#) [2854-BLU](#) [2970-BLK](#) [30-443G](#) [1909861](#) [1916120](#) [1918007](#) [1919515](#) [1929125](#) [1944375](#) [204-103](#) [2079](#) [2435108](#) [2803-102](#) [300](#) [30-442G](#) [R644543003](#)