



Heat at work.
Hot-melt gluing and hot air



Do-it-yourself has a future.

STEINEL's new hot air tools and hot-melt glue applicators.

Modern, ergonomic, superior - this was the philosophy in developing our new generation of thermo tools. We took a close look at the personal needs of our customers and the technical options, confronting developers and designers with a clear brief: Build the best thermo tools we have ever made! We are more than happy with the result. Products that not only look good but also extend the lead over competitors in terms of technology. Products that are not only intelligently made but also last. This is the result of expertise we gave gathered over 30 years and production in our own European factories.

As we said: Do-it-yourself has a future.

Index

Hot-melt glue applicators	4 – 5	Hot air tools	20 – 21
Neo1	6 – 7	HL 2020 E	22 – 23
Neo2	8 – 9	HL Scan	24 – 25
Gluematic 5000	10 – 11	HL 1920 E	26 – 27
Gluematic 3002	12 – 13	HL 1620 S	28 – 29
Gluefix	14 – 15	HL Stick	30 – 31
Hot-melt glue applicators at a glance	16 – 17	Hot air tools at a glance	32 – 33
Hot-melt gluing accessories	18 – 19	Hot air accessories	34 – 35
		Details at a glance	36 – 37
		Styrofix	38 – 39
		Brand presentation	40 – 41



Hot-melt gluing for millions.

For everyone who's not glued to the past.

You see the same picture over and over again in millions of households: promising tubes of glue are unusable when they are needed. Dried up and messy, with only one that's really stuck: the cap. Intelligent hot-melt glue technology from STEINEL gives you exactly what you expect from gluing. Benefiting from state-of-the-art rechargeable battery technology, STEINEL Neo hot-melt glue applicators are ready to use in 15 seconds. No matter where anything needs gluing – household, hobby or workshop – a turn of the hand is all it takes to fix the problem. A single battery charge is enough for over 200 non-drip gluing applications.

Now that's stunning.



Small. Fast. Dripleless. Fits in any drawer.
Cordless hot-melt glue pen **neo1**

The cordless and practical neo1 all-purpose glue applicator is the ideal tool for creative work – and ready to use in just 15 seconds. The new anti-drip system (ATS) means the adhesive is automatically drawn back into the nozzle on releasing the feed button. Glue that keeps on running is now a thing of the past. And the high-performance lithium-ion rechargeable battery provides enough power for up to 200 applications.



Adding decorations. Making colourful and attractive tealight holders.



Includes
3 glue sticks
7 mm dia.



Includes
USB charger



LED battery-
charge status
indicator



Easy to
recharge

Technical specifications

Warm-up time: approx. 15 seconds
Melt temperature: 170 °C
Delivery rate: 3 g/min.
Dimensions (L x W x H): 179 x 40 x 65 mm
Battery run time: up to 200 applications
or approx. 30 minutes of continuous operation
Battery charging time: 90% in 3 hours
Voltage: 3.6 V lithium-ion rechargeable battery
Micro-USB charger
Mains power supply, charger: 100 – 240 V, 50/60 Hz
Weight: 155 g

Ordering details

EAN 4007841 334109
(folding box, including
3 glue sticks and USB charger)

Accessories

Glue sticks: max. dia. 7 mm (see page 19)



Ideal für



Everything under control. Without cables, but with plenty of gluing power. Cordless hot-melt glue applicator **neo2**

Professional qualities in practical dimensions: the neo2 cordless hot-melt glue applicator is the perfect partner for all DIYers. The cordless powerhouse with high-performance rechargeable battery is ready to use in 15 seconds and glues for up to 30 minutes in continuous operation. It joins virtually all materials neatly and accurately – metal, wood, plastics, ceramics and many others.



Joining. Quickly mending broken toys with hot-melt glue.



Includes
3 glue sticks
7 mm dia.



Includes
USB charger



LED battery-
charge status
indicator



Easy to
recharge



Technical specifications

Warm-up time: approx. 15 seconds
Melt temperature: 170 °C
Delivery rate: 3 g/min.
Dimensions (L x W x H): 157 x 47 x 158 mm
Battery run time: up to 200 applications
or approx. 30 minutes of continuous operation
Battery recharging time: 90% in 3 hours
Voltage: 3,6 V lithium-ion rechargeable battery
Micro-USB charger
Mains power supply, charger: 100 – 240 V, 50/60 Hz
Weight: 275 g

Ordering details

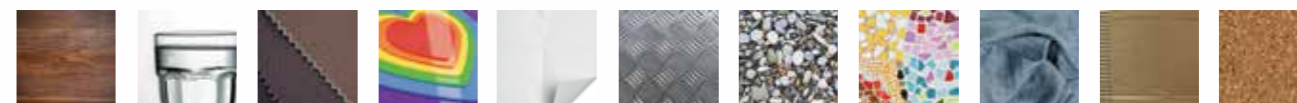
EAN 4007841 334208
(folding box, including
3 glue sticks and USB charger)

Accessories

Glue sticks: max. dia. 7 mm (see page 19)



Ideal for



Strong. Neat. Versatile. No compromising. Hot-melt glue applicator **Gluematic 5000**

Mounting wall plugs, gluing picture frames or assembling flower arrangements: Not a problem for the high-performance Gluematic 5000 – where and whenever you choose. Because after heating up for three to five minutes, the tool is ideal for 20 minutes of cordless gluing work thanks to its modern heat storage system. For prolonged gluing work over large areas, this all-rounder with a very high glue delivery rate (22 g/min) can, of course, also be connected directly to the power supply.



Includes standard and long nozzle



Securing. Fixing shelf supports in cabinets.



Includes 5 glue sticks 11 mm dia.



Ready for use in 3 – 5 min.



Interchangeable gluing nozzles



Up to 20 min. of cordless gluing



Corded operation for continuous work



Includes standard nozzle



Includes long nozzle



Technical specifications

Warm-up time: 3 – 5 min
Melt temperature: 210 – 220 °C
Delivery rate: 22 g /min.
Dimensions (L × W × H): 185 × 32 × 180 mm
Mains power supply: 220 – 240 V
Power input: idle 20 W, warming up approx. 500 W, in use 120 W
Weight: 330 g (without stand)

Ordering details

EAN 4007841 332716 (folding box, including 5 glue sticks and 2 nozzles)

Accessories

Interchangeable nozzles and glue sticks: max. dia. 11 mm (see page 19)

Ideal for



The original. Versatile and reliable.
Hot-melt glue applicator **Gluematic 3002**

High melting capacity (16 g/min), small and practical size, incredibly easy to operate and ready for use in just seven minutes: the electronically controlled Gluematic 3002 is the one for (almost) everything. A reliable helper for hobby and DIY, it is the perfect tool for joining, repairing, sealing and for all sorts of other jobs around the home.
Also practical - the interchangeable accessory nozzles.



Also available in a case, including 8 glue sticks in a dia. of 11 mm.



Decorating. Decorative floral rings are so easy to make yourself.



Includes glue sticks 11 mm dia.



Ready for use in 7 min.



Interchangeable gluing nozzles



Technical specifications

Warm-up time: 7 min.
Melt temperature: 206 °C
Delivery rate: 16 g /min.
Dimensions (L x W xH): 185 x 30 x160 mm
Mains power supply: 100 – 240 V
Power input: idle 16 W, warming up approx. 200 W, in use 45 W
Weight: 320 g

Ordering details

EAN 4007841 333317 (folding box, including 3 glue sticks)
EAN 4007841 333393 (in a case, including 8 glue sticks)

Accessories

Interchangeable nozzles and glue sticks: max. dia. 11 mm (see page 19)

Ideal for



The starter model for working creativity.
Hot-melt glue applicator **Gluefix**

Gluefix is the perfect hot-melt glue applicator for everyone who likes to be creative, do craft work and decorate. The entry-level model in a modern design impresses with its slim-line and ergonomic shape, is incredibly light to hold and intuitive in use. With these unmatched qualities, Gluefix makes the perfect choice for precision gluing jobs.



Being creative. Making your own greeting cards with coloured hot-melt glue sticks.



Includes
2 glue sticks
11 mm dia.



Ready for use
in 7 – 8 min.



Technical specifications

Warm-up time: 7 – 8 min
Melt temperature: 200 °C
Delivery rate: 13 g /min.
Dimensions (L x W x H): 175 x 30 x 125 mm
Mains power supply: 100 – 240 V
Power input: idle 16 W, warming up approx. 175 W, in use 40 W
Weight: 300 g

Ordering details

EAN 4007841 333911 (folding box, including 2 glue sticks)

Accessories

Glue sticks: max. dia. 11 mm
(see page 19)



Ideal for



Hot-melt glue applicators at a glance



	neo1	neo2	Gluematic 5000	Gluematic 3002	Gluefix
Decoration / craft / repair	•	•	•	•	•
Cordless gluing	with li-ion battery for 200 applications	with li-ion battery for 200 applications	up to 30 min. heat storage capability		
7 mm glue sticks	includes 3 sticks	includes 3 sticks			
11 mm glue sticks			includes 5 sticks	includes 3 sticks	includes 2 sticks
interchangeable gluing nozzles			includes 2 nozzles	available as accessory	
15-sec. quick start	•	•			
Melting temperature	170 °C	170 °C	210 – 220 °C	206 °C	200 °C
Delivery rate	3 g/min	3 g/min	22 g/min	16 g/min	13 g/min



Quality adhesives
from STEINEL.

In the re-sealable "Easy-Pack".



All glued.
All done. All sorted.

Benefits of hot-melt glue.

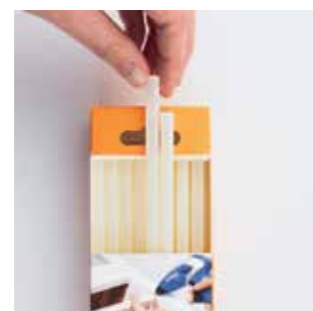
- Fast – bonds within seconds
- Solvent-free – so non-toxic
- The all-purpose glue – for virtually any material
- Can be taken apart again with hot air



Always ready. Keeping hot-melt glue sticks protected and ready at all times.



Pull open.



Take a stick out.



Re-seal.

Better gluing results with the right glue.

The right stick for any demand.

7 mm dia. glue sticks for neo1 and neo2.



Ultra Power glue sticks, 7 mm

Extremely strong, multi-purpose hot-melt glue. Ideal for all craft and DIY work.

40 each 240 g EAN 4007841 006730
16 each 96 g EAN 4007841 006747



Crystal glue sticks, 7 mm

Clear all-purpose glue, transparent. Ideal for craft work and decorating.

40 each 240 g EAN 4007841 006594
16 each 96 g EAN 4007841 006624



Coloured glue sticks, 7 mm, assorted

Strong multi-purpose hot-melt glue. Ideal for gluing coloured materials or for sticking on coloured lettering.

16 each 96 g EAN 4007841 006969

11 mm dia. glue sticks for Gluematic 5000, Gluematic 3002 and Gluefix.



11 mm Ultra Power glue sticks

Extremely strong, multi-purpose hot-melt glue. Ideal for all craft and DIY work.

40 each 1000 g EAN 4007841 046910
20 each 500 g EAN 4007841 044930
10 each 250 g EAN 4007841 006761



Crystal glue sticks, 11 mm

Clear all-purpose glue, transparent. Ideal for craft work and decorating.

40 each 1000 g EAN 4007841 006822
20 each 500 g EAN 4007841 048419
10 each 250 g EAN 4007841 006754



White glue sticks, 11 mm

Strong multi-purpose hot-melt glue. Ideal for gluing light-coloured materials or making repairs.

10 each 250 g EAN 4007841 006808



Black glue sticks, 11 mm

Strong multi-purpose hot-melt glue. Ideal for gluing dark-coloured materials or making repairs.

10 each 250 g EAN 4007841 006792



Wood glue sticks, 11 mm

Special hot-melt glue for all types of wood.

10 each 250 g EAN 4007841 006778



Coloured glue sticks, 11 mm, assorted

Strong multi-purpose hot-melt glue. Ideal for gluing coloured materials or for sticking on coloured lettering.

10 each 250 g EAN 4007841 006815

Interchangeable nozzles for Gluematic 5000 and Gluematic 3002.



Standard nozzle, 2.0 mm in dia.

Ideal for all normal gluing jobs.

EAN 4007841 076061



Long nozzle, 2.8 mm in dia.

Precision metering at hard-to-reach places.

EAN 4007841 075965



Fine nozzle, 1.0 mm dia.

Exact metering for high-precision gluing applications.

EAN 4007841 076160



Simply hotter. Simply more effective.

Hot air from STEINEL.

Modern, ergonomic and featuring superior technology – that's the new generation of hot air tools from STEINEL. As pioneer and brand leader of this technology, STEINEL once again sets new standards with the generation that is now available.

- Longer life
- More power
- Optimised ergonomics

The C Frame is the new, unmistakable design element of the new product family. Apart from providing far better ergonomics, this design expresses a clear attitude. Powerful and dynamic in looks, the frame encloses the technology inside and structures the exterior's function zones. In keeping with this philosophy, it has also been possible to optimise the weight balance. This makes our tools more of a pleasure to work with while also minimising fatigue.

The high-end model. Hot air tool **HL 2020 E**

Professional DIYers opt for the sturdy HL 2020 E hot air tool. The electronically controlled thermo tool delivering 2200 watts of power is easily operated by joystick, regulates temperature from 80 to 630 °C and provides user convenience with its LCD display. The residual heat indicator warns the user that the outlet nozzle is still hot. Precision adjustable heat and powerful blower make this high-end tool the ideal choice for virtually any application – shrinking on cable sleeves, welding, shaping and many other challenging jobs.



Also available in a case including 9 mm reduction nozzle.



Repairing. Welding PVC water tank.



Technical specifications

Output: 2200 W
 Temperature: 80 – 630 °C
 Airflow rate: 150 – 500 l/min
 Setting 1 150 l/min.
 Setting 2 150 – 300 l/min.
 Setting 3 300 – 500 l/min.
 Temperature setting:
 infinitely variable in 10 °C steps by joystick
 Temperature display: LCD display
 Dimensions (L x W xH): 253 x 85.5 x 200 mm
 Power supply: 220 – 230 V, 50/60 Hz
 Protection class (without earth terminal): II
 Motor: brush motor
 Heating element: ceramic heating element
 Thermostat: yes
 Thermal fuse: yes
 Power cord length: 2.20 m
 Weight: 880 g

Ordering details

EAN 4007841 008192 (folding box)
 EAN 4007841 352202 (in case, including 9 mm reduction nozzle)

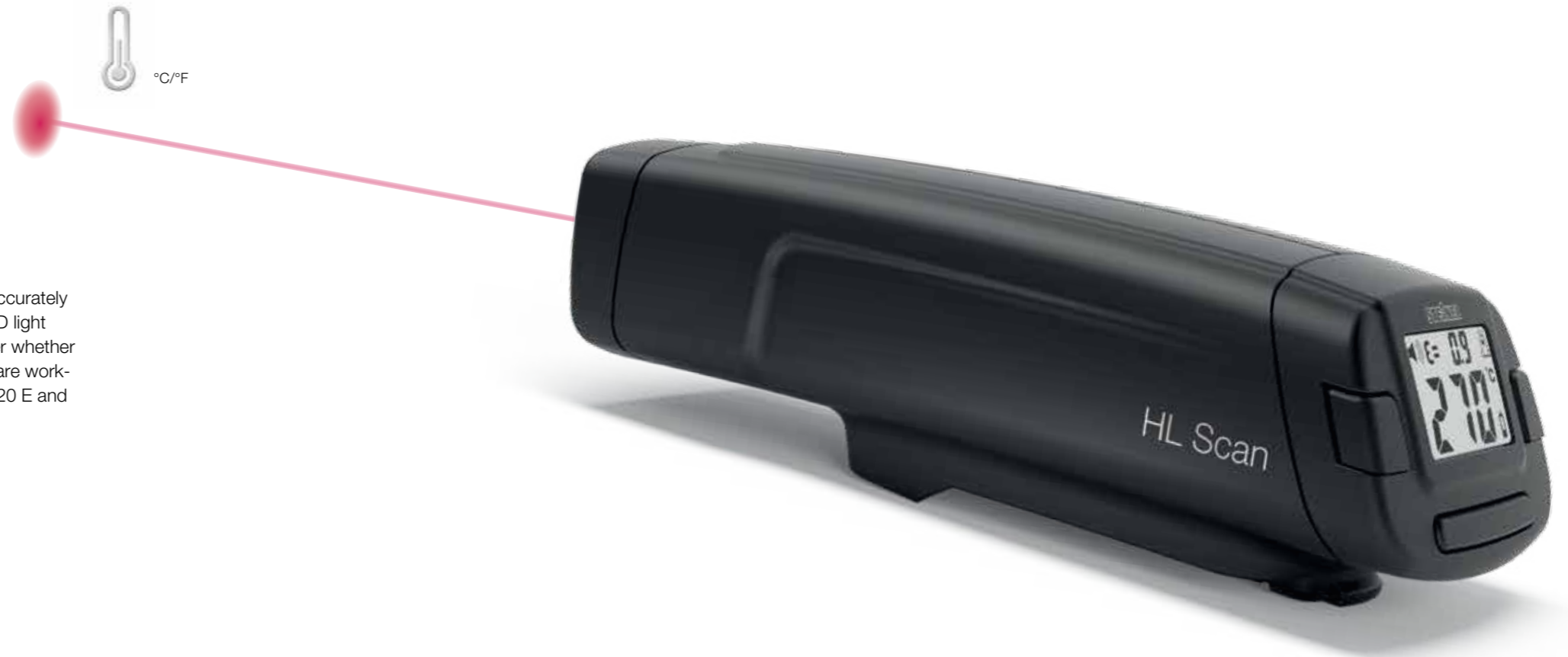
Accessories

EAN 4007841 214919 HL Scan
 EAN 4007841 078218 Fine dust filter
 (more accessories from page 34)



Precision temperature measurement.
 Temperature scanner **HL Scan**
 for HL 2020 E and HL 1920 E

Anybody working with sensitive materials relies on HL Scan. The unit reliably and accurately measures workpiece temperature by sensor. As a practical helper, the beam of LED light marks the area you are working on. Visual and acoustic warning signals tell the user whether the surface is too cold or too hot. This means the scanner always makes sure you are working in the ideal temperature range. Making HL Scan the ideal addition to the HL 2020 E and HL 1920 E – and the perfect way to avoid damaging sensitive materials.



Smoothing. Smoothing leather at right temperature with optional HL Scan.



Visual warning: too hot

Temperature ideal

Visual warning: too cold

Acoustic warning

Technical specifications

Temperature measurement range: 0 – 300 °C
 Temperature scanning: by sensor
 Work area marking: by light beam
 Optimum distance from workpiece: 15 cm
 Dimensions (L x W x H): 146.6 x 51 x 44 mm
 Voltage: 9 V batteries, included
 Special features:
 adjustable emission levels and tolerance ranges
 Weight: 165 g

Ordering details

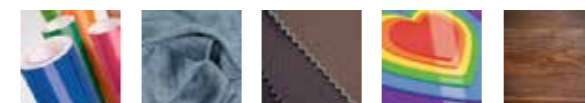
EAN 4007841 014919 (folding box)



Simple pushes onto the HL 2020 E or HL 1920 E.



Ideal for



For challenging jobs. Hot air tool **HL 1920 E**

Finished to a high level of quality with optimum weight balance and long life, the HL 1920 E hot air tool is an absolute "must" for the ambitious DIY enthusiast. The multi-talented all-rounder impresses with 2000 watts of power, infinitely variable temperature adjustment from 80 to 600 °C and airflow control in three settings. And if it ever gets too hot when welding plastic or stripping paint, the automatic cut-out protects the tool from overheating.



Shaping. Using heat for getting plastic into exactly the right shape.



Optimised weight balance



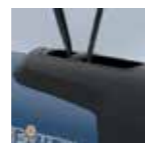
Non-slip standing surface



3-stage airflow



infinitely variable temperature setting



Hanger

Technical specifications

Output: 2000 W
 Temperature: 80 – 600 °C
 Airflow rate: 150 – 500 l/min
 Setting 1 150 l/min.
 Setting 2 150 – 300 l/min.
 Setting 3 300 – 500 l/min.
 Temperature adjustment: in 9 steps by thumbwheel
 Dimensions (L x W x H): 253 x 84.5 x 200 mm
 Power supply: 220 – 230 V, 50/60 Hz
 Protection class (without protective earth terminal): II
 Motor: brush motor
 Heating element: ceramic heating element
 Thermostat: no
 Thermal fuse: yes
 Power cord length: 2.20 m
 Weight: 840 g

Ordering details

EAN 4007841 352103 (folding box)

Accessories

EAN 4007841 214919 HL Scan
 EAN 4007841 078218 Fine dust filter
 (more accessories from page 34)



Gateway to the world of hot air.

Hot air tool **HL1620 S**

Drying plasterwork, lighting the barbecue or finally getting round to waxing those skis: around the home and elsewhere too, there are endless jobs to be done. Just as well when there's professional assistance. The HL 1620 S hot air tool helps to overcome everyday challenges with effortless ease. Adjustable in two stages, this all-rounder works in a temperature range of 300 or 500 °C, comes with an optimised weight balance for fatigue-free work as well as an integrated thermal cut-out. And all weighing in at only 670 grams. Second to none!



Removing. Stickers are easy to remove with hot air.



Optimised weight balance

2-stage airflow

Technical specifications

Output: 1600 W
 Temperature: 300/500 °C
 Airflow rate: 240/450 l/min.
 Temperature setting: 2-stage
 Dimensions (L x W x H): 252 x 85.5 x 200 mm
 Power supply: 220 – 230 V, 50/60 Hz
 Protection class (without earth terminal): II
 Motor: brush motor
 Heating element: micanite heating element
 Thermostat: no
 Thermal fuse: yes
 Power cord length: 2.20 m
 Weight: 670 g

Ordering details

EAN 4007841 351106 (folding box)

Accessories

(see page 34)



Small and practical. Ideal for model-making.
Hot air tool **HL Stick**

No matter whether for minor repairs and craft work or exacting model-making: precision is the be-all and end-all – and what the HL Stick does best. The versatile and compact hot air tool gets the trickiest of jobs done with pinpoint accuracy. With its lightweight design and precision nozzles, the stick can even reach those hard-to-reach places in models and other cavities. The secure standing surface also lets handicraft enthusiasts work hands-free and the integrated LED light perfectly illuminates every last corner. Getting heat to exactly where it's needed.



Heat-shrinking. Secure standing for hands-free work.



Technical specifications

Output: 350 W
 Temperature: 400 °C (500 °C with nozzle)
 Airflow rate: 100 l/min
 Dimensions (L x W x H): 235 x 78 x 76 mm
 Power supply: 220 – 230 V, 50 Hz
 Protection class (without protection class terminal): II
 Motor: brush motor
 Heating element: ceramic heating element
 Thermal fuse: yes
 Power cord length: 2.20 m
 Weight: 600 g

Ordering details

EAN 4007841 004019
 (folding box, including 4 nozzles)



Includes 4 nozzles



Reflector nozzle
10 mm
Heat-shrinking (narrow)

Reflector nozzle
40 mm
Heat-shrinking (wide)

Precision nozzle,
4.5 mm dia.
Spot heating

Reduction nozzle,
7 mm dia.
Increases temperature to 500 °C



Hot air tools at a glance



	HL 2020 E	HL 1920 E	HL 1620 S	HL Stick
Removing and shaping	•	•	•	•
Heat-shrinking	•	•	•	•
Welding	•	•		
Desoldering	•	•		•
Output	2200 W	2000 W	1600 W	350 W
Temperature	80 – 630 °C	80 – 600 °C	300/500 °C	400 °C
Airflow rate	150 – 500 l/min	150 – 500 l/min	240 – 450 l/min	100 l/min
Continuously adjust. temperature	•	•		
Digital control system	•			
Hanger	•	•		•
Residual heat indicator	•			
Heat build-up warning	•			
Replaceable power cord	•			
Also available in case	•			
Optional HL-Scan as accessory	•	•		
Optional fine dust filter as accessory	•	•		

Hot air accessories

Removing and shaping



Surface nozzle 50 mm
EAN 4007841 070113



Surface nozzle 75 mm
EAN 4007841 070212



Window nozzle 50 mm
EAN 4007841 070311



Window nozzle 75 mm
EAN 4007841 070410



Paint scraper set, 5-piece
EAN 4007841 010317

Heat-shrinking



Reflector nozzle
EAN 4007841 070519



Crimp connectors
0.5 – 1.5 mm dia.
EAN 4007841 006655
1.5 – 2.5 mm dia.
EAN 4007841 006648
0.1 – 6.0 mm dia.
EAN 4007841 006662



Heat-shrinkable tube
1.6 – 4.8 mm dia.
EAN 4007841 071318
4.8 – 9.5 mm dia.
EAN 4007841 071417
4.0 – 12.0 mm dia.
EAN 4007841 072766
Set
EAN 4007841 075811

Soldering and spot heating

(HL 2020 E + HL 1920 E)



Reduction nozzle 9 mm
EAN 4007841 070618



Soldering reflector nozzle, 10 mm
EAN 4007841 074616



Reduction nozzle 14 mm
EAN 4007841 070717

Welding

(HL 2020 E + HL 1920 E)



Welding nozzle
Pushes onto
9 mm reduction nozzle
EAN 4007841 070915



Wide-slit nozzle
Pushes onto
14 mm reduction nozzle
EAN 4007841 074715



Feed roller
For welding sheeting and
edgebanding
EAN 4007841 012311



HDPE welding rod
100 g
EAN 4007841 071219



PP welding rod
100 g
EAN 4007841 073411



PVC welding rod
100 g
EAN 4007841 073114



ABS welding rod
100 g
EAN 4007841 074210

Special accessories

(HL 2020 E + HL 1920 E)



HL-Scan
EAN 4007841 014919



Fine dust filter
EAN 4007841 078218

Why STEINEL hot air tools are the best.

Details at a glance

For you, Electronic Control means:

- Ceramic heater for a useful life of up to 600 hours
- All STEINEL accessories can be used, including HL-Scan
- Higher working temperatures can be reached
- Overheating protection when using reduction nozzles



Non-slip standing surface. On the HL 2020 E and HL 1920 E.



Optimised weight balance. Permits prolonged fatiguefree work.



Replaceable power cord. On the HL 2020 E.



Hanger. On the HL 2020 E, HL 1920 E und HL Scan.



Residual heat indicator. On the HL 2020 E.



Optional fine dust filter. For the HL 2020 E and HL 1920 E.



Optional HL Scan. For the HL 2020 E and HL 1920 E.

LCD display. On the HL 2020 E.



3-stage airflow. For the HL 2020 E and HL 1920 E.

Fast. Easy. And ultra-precise.
Polystyrene cutter **Styrofix**

The Styrofix heat cutter does exactly what it says: the tool quickly and easily cuts through rigid foam boards, such as polystyrene, Sagex or Alporit, to give precision results. The three blades - standard, precision and hook blade - provide DIYers with a broad range of options to cover all sorts of different applications. Ideal for making polystyrene rings, creating model landscapes or cutting coving with utmost precision – and, of course, always with a perfect cut.



200 °C



Model-making. Producing your own replacement parts or making new models.



Ready for use in 6 seconds



Max. cutting depth 50 mm



Cutting blades easy to change



No problem cutting perfectly round circles



Cutting out small cable channels

Technical specifications

Dimensions (L x W x H): 35 x 100 x 225 mm
Power supply: 100 – 240 V
Power input: idle 20 W, warming up 250 W, in use 45 W
Warm-up time: 6 min.
Working temperature: 200 °C
Cutting depth: 50 mm
Weight: 315 g

Ordering details

EAN 4007841 334017 (folding box, including 3 blades)

Includes 3 blades



Heat at work. **STEINEL** brand presentation Clear, compact, sales boosting.

Compact and clearly arranged, the STEINEL brand presentation stand impressively spotlights the range of hot air tools and hot-melt glue applicators. Customers find the right product and accessories at first glance. Numerous sales-promoting details underscore STEINEL's high-quality brand identity and whet the appetite for DIY. That attracts customers – and boosts sales.



STEINEL quality in product and presentation leaving your customers in no doubt.



Application labelling to help customers choose the right product.



Free information flyers for your customers.



Banner showing many applications and advice.



Expertise on 1.25 x 2.20 m

STEINEL. The Original.



STEINEL Brand

- STEINEL has been brand leader in hot air tools for over 30 years
- German engineering
- Produces in Europe



STEINEL Warranty

Needless to say, our management system holds certification under Quality Standard DIN EN ISO 9001 and Environmental Management Systems Standard DIN EN ISO 14001



Certified Quality

For us, it goes without saying that all products from STEINEL comply with European safety standards. Despite involving a huge effort and not always easy from a technical point of view, we're never deterred. Because it's all worth it. So you get certified quality – every step of the way.



STEINEL Customer Service

- Phone: +49 (0)5245 448 188
- E-mail: service@steinel.de
- Monday – Friday 8 a.m. – 5 p.m.



www.steinel.de

- Product overview
- Operating instructions for downloading
- Product videos



STEINEL Repair Service

- 48-hour repair service for STEINEL hot air tools



STEINEL Replacement Parts Service

- Availability guaranteed for genuine STEINEL parts

STEINEL Vertrieb GmbH | Dieselstrasse 80 - 84 | 33442 Herzebrock - Clarholz | Germany
Phone + 49 (0) 5245 448- 0 | Fax + 49 (0) 5245 448 197

www.steinell.de

www.youtube.com/steinelgmbh

www.xing.com/companies/steinelvertriebgmbh

STEINEL®

X-ON Electronics

Largest Supplier of Electrical and Electronic Components

Click to view similar products for [Steinel](#) manufacturer:

Other Similar products are found below :

[4007841007812](#) [4007841011925](#) [4007841092016](#) [4007841009083](#) [4007841009090](#) [HG 2520 LCD SET](#) [4000649009625](#) [HL SCAN](#) [07301](#)
[07715](#) [4007841010409](#) [4007841092313](#) [4007841092214](#) [4007841009076](#) [092115](#) [070212](#) [07695](#) [070113](#) [07725](#) [4007841070311](#)
[4007841070410](#) [HG 2120 E SET](#) [07705](#) [07081](#) [HG 2420 E](#) [FLEX 190ST](#) [GLUE PRO 400](#) [FAST 190ST](#) [KON/G3002](#) [HL 1620 S](#)
[4007841074715](#) [HG 2320 LCD SET](#) [HL 2020 E SET](#) [HL 1821 S SET](#) [TS 600](#) [HL STICK 350W](#) [LOW MELT 130ST](#) [G3002 SET](#) [HL 1820 S](#)
[KON1/G5000](#) [D/R75](#) [HG2320 E 230V](#) [HL 1920 E](#) [07051](#) [ACRYLATE 200ST](#) [G5000](#) [HL1820 S 240V](#) [07071](#) [D/RFL](#) [4007841009571](#)