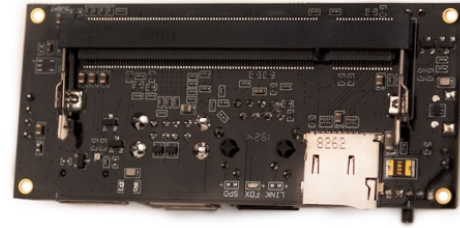
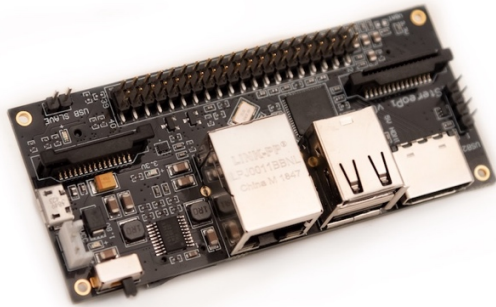


StereoPi Standard Edition



Brief Description

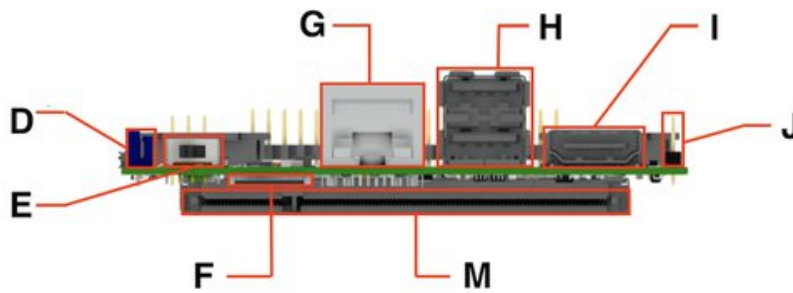
- StereoPi is a carrier board for a Raspberry Pi Compute Module.
- This is an open source stereoscopic camera based on Raspberry Pi. It can capture, save, livestream, and process real-time stereoscopic video and images. StereoPi opens up countless possibilities in robotics, AR/VR, computer vision, drone instrumentation, panoramic video, and more.

Features & Specifications

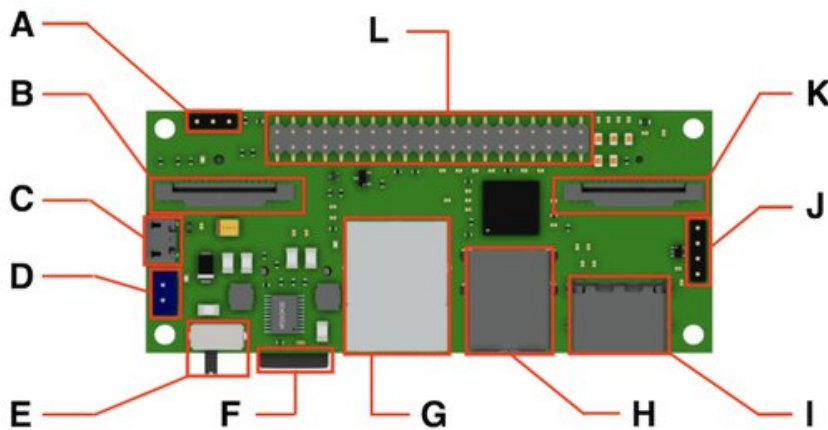
- **Raspberry Pi Compatibility:**
 - Raspberry Pi Compute Module 1 (requires 2nd power mode, check Wiki)
 - Raspberry Pi Compute Module 3
 - Raspberry Pi Compute Module 3 Lite
 - Raspberry Pi Compute Module 3+ 8 GB / 16 GB / 32 GB eMMC flash
 - Raspberry Pi Compute Module 3+ Lite
- **Dimensions:**
 - width x length: 90 mm x 40 mm
 - height: 23 mm (standard edition) / 15 mm (slim edition)
- **Video:**
 - input: two 15-pin CSI-2 camera connectors
 - output: HDMI
- **Camera Support:**
 - Raspberry Pi camera V1 (OV5647 sensor)
 - Raspberry Pi camera V2 (Sony IMX 219 sensor)
 - HDMI video capture module (single mode, on Toshiba TC358743XBG chip)
- **Connectivity:**
 - GPIO: 40-pin classic Raspberry Pi header
 - USB: 2 x USB Type-A, 1 x USB pin header
 - Ethernet: RJ45 jack
- **Storage:**
 - microSD card slot (accessed by Raspberry Pi CM3/3+ Lite)
- **Power:**
 - 5 VDC input via two-pin header
 - manual power switch
- **Software:**
 - firmware update via Micro USB connector
 - runs standard Raspbian

Specific details

StereoPi Standard Edition



Front view



Top view

| | |
|------------------------------------|----------------------------------|
| A. boot mode jumper | H. dual USB Type-A connector |
| B. camera 1 CSI-2 connector | I. HDMI out |
| C. micro USB (for firmware upload) | J. USB port pin header |
| D. 5 VDC power connector | K. camera 2 CSI-2 connector |
| E. power switch | L. 40-pin RPi GPIO header |
| F. microSD slot | M. RPi Compute SO-DIMM connector |
| G. RJ45 Ethernet jack | |

Additional information

StereoPi Standard edition is **RoHS 3 Compliant**

X-ON Electronics

Largest Supplier of Electrical and Electronic Components

Click to view similar products for [Video IC Development Tools](#) category:

Click to view products by [StereoPi](#) manufacturer:

Other Similar products are found below :

[TW6872-NA1-CR-EVALZ](#) [MAX3815AHDMIEVKIT+](#) [1937](#) [ADZS-DECODE-EX3](#) [SEN0173](#) [EBK-GS2972-00](#) [LF-PNV-EVN](#) [EP-DCOV2735-F36](#) [UP-PACK-VISION-002](#) [3100](#) [3202](#) [3415](#) [397](#) [EVAL-AD9984AEBZ](#) [EVAL-ADV7280EBZ](#) [EVAL-ADV7281MAEBZ](#) [EVAL-ADV7282EBZ](#) [EVAL-ADV7341EBZ](#) [107784](#) [108024](#) [108025](#) [108320](#) [108329](#) [VM800BU35A-PL](#) [VM801B43A-BK](#) [VM801B50A-BK](#) [VM801P50A-BK](#) [VM801P43A-BK](#) [DFR0498](#) [82535IVCQSPL04N](#) [82634DSQSCR](#) [030-0276-0101_A](#) [QC-DB-I10006](#) [DP-VIP-I-EVN](#) [DP-VIP-O-EVN](#) [USB3-VIP-EVN](#) [CS-DEPTHAI-05](#) [CS-DEPTHAI-06](#) [AGB1N0CS-GEVK](#) [PIM365](#) [PIM366](#) [101020892](#) [103990057](#) [114991702](#) [EBK-GS2971A-00](#) [P0447](#) [EVAL-ADV7281EBZ](#) [EVAL-ADV7283EBZ](#) [MXOV10635-S32V](#) [OV10640CSP-S32V](#)