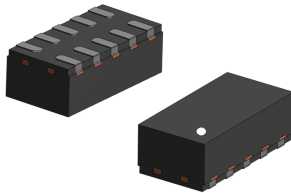
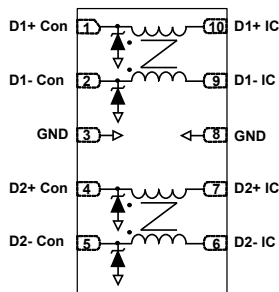



## Automotive common mode filter with ESD protection



QFN-10L 2.6 x 1.35 x 0.75



## Features

- AEC-Q101 qualified 
- 3.5 GHz differential bandwidth to comply with HDMI 2.0, HDMI 1.4, USB 3.1, MIPI and LVDS
- Common mode attenuation on LTE, GSM, and GPS frequencies:
  - -13 dB at 0.7 GHz
  - -24 dB at 1.5 GHz
  - -30 dB at 2.4 GHz
  - -26 dB at 2.7 GHz
  - -16 dB at 5.0 GHz
- Wettable flank for automatic optical inspection
- Low PCB space consumption: 3.5 mm<sup>2</sup>
- Thin package for compact applications: 0.75 mm
- RoHS package

## Complies with the following standards

- UL94, V0
- J-STD-020 MSL level 1
- J-STD-002
- IPC7531 footprint and JEDEC registered package
- ISO 10605, IEC 61000-4-2, C = 150 pF – R = 330 Ω level 4:
  - 8 kV (contact discharge)
  - 15 kV (air discharge)
- ISO 10605, C = 330 pF – R = 330 Ω level 4:
  - 8 kV (contact discharge)
  - 15 kV (air discharge)

## Description

The **ECMF04-4HSWM10Y** is an integrated common mode filter designed to suppress EMI/RFI common mode noise on high speed buses HDMI 1.4, USB 3.1 and MIPI. It is designed to replace discrete common mode chokes or LTCC.

The device embeds ESD protections on connector side to meets ISO 10605 requirements.

Packaged in QFN-10L with wettable flank, it is compatible with automatic visual inspection.

## Product status link

[ECMF04-4HSWM10Y](#)

## Product summary

Order code	ECMF04-4HSWM10Y
------------	-----------------

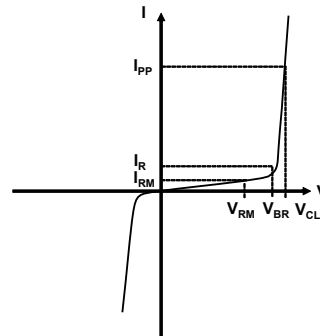
# 1 Characteristics

**Table 1. Absolute maximum ratings ( $T_{amb} = 25\text{ }^{\circ}\text{C}$ )**

Symbol	Parameter	Value	Unit
$V_{PP}$	Peak pulse voltage	ISO 10605 (C = 330 pF, R = 330 $\Omega$ ):	
		Contact discharge	8
	Air discharge	15	
	ISO10605 / IEC 61000-4-2 (C = 150 pF, R = 330 $\Omega$ ):	Contact discharge	8
Air discharge		15	
$I_{RMS}$	RMS current	100	mA
$T_{op}$	Operating ambient temperature range	-55 to +125	$^{\circ}\text{C}$
$T_{stg}$	Storage temperature range	-55 to +150	

**Figure 1. Electrical characteristics (definitions)**

- $V_{RM}$  Maximum stand-off voltage
- $V_{CL}$  Clamping voltage at peak pulse current  $I_{PP}$
- $I_{RM}$  Leakage current at  $V_{RM}$
- $I_{PP}$  Peak pulse current
- $V_{BR}$  Breakdown voltage
- $R_{DC}$  DC serial resistance
- $f_c$  Differential cut off frequency

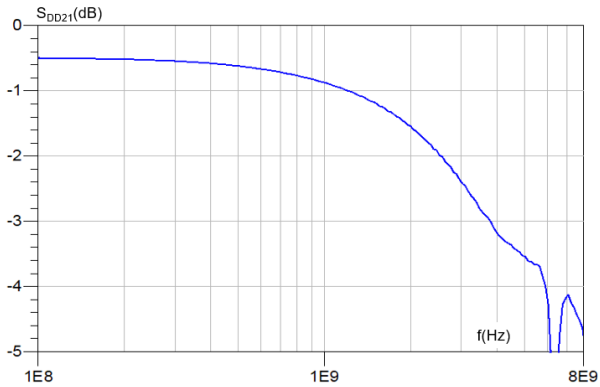


**Table 2. Electrical characteristics ( $T_{amb} = 25\text{ }^{\circ}\text{C}$ )**

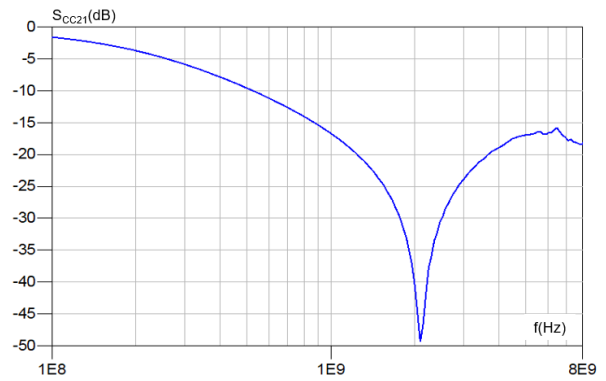
Symbol	Test conditions	Min.	Typ.	Max.	Unit
$V_{BR}$	$I_R = 1\text{ mA}$	6	7		V
$I_{RM}$	$V_{RM} = 3\text{ V}$			100	nA
$R_{DC}$	$I_{DC} = 20\text{ mA}$		5.5		$\Omega$
$f_c$	$S_{DD21} = -3\text{ dB}$		3.5		GHz
$V_{CL}$	8 kV contact discharge after 30 ns, ISO 10605 (150 pF – 330 $\Omega$ )		27		V

### 1.1 Characteristics (curves)

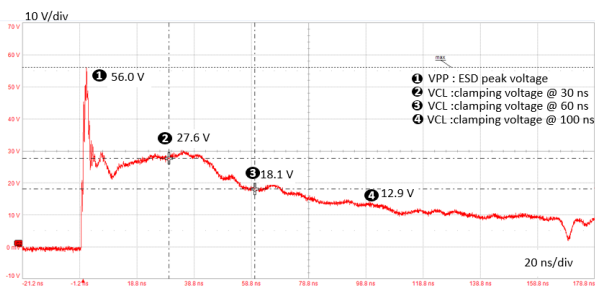
**Figure 2. Differential attenuation versus frequency**  
( $Z_{0\_diff} = 100 \Omega$ )



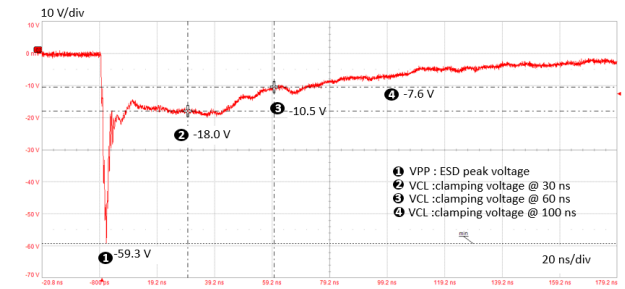
**Figure 3. Common mode attenuation versus frequency**  
( $Z_{0\_com} = 50 \Omega$ )



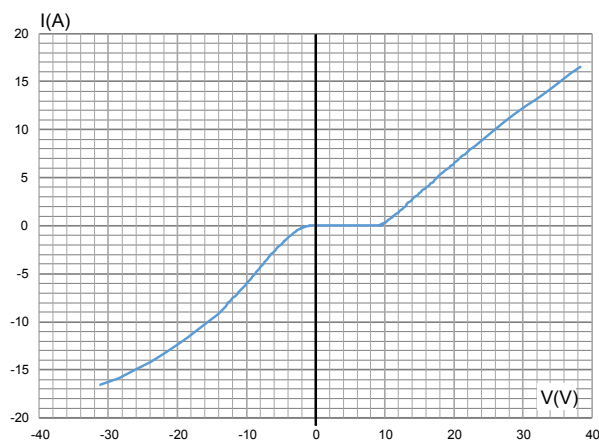
**Figure 4. ISO 10605 - C = 150 pF, R = 330  $\Omega$  (+8 kV contact)**



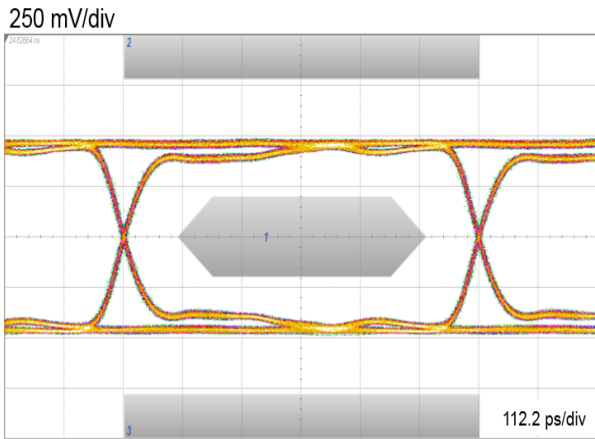
**Figure 5. ISO 10605 - C = 150 pF, R = 330  $\Omega$  (-8 kV contact)**



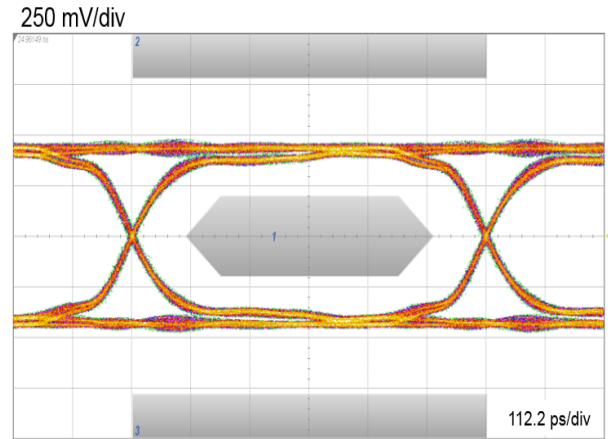
**Figure 6. TLP characteristic**



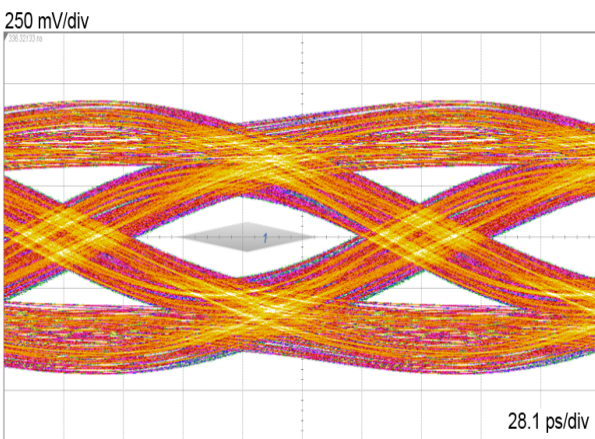
**Figure 7. HDMI1.4 – 1.485 Gbps eye diagram without device**



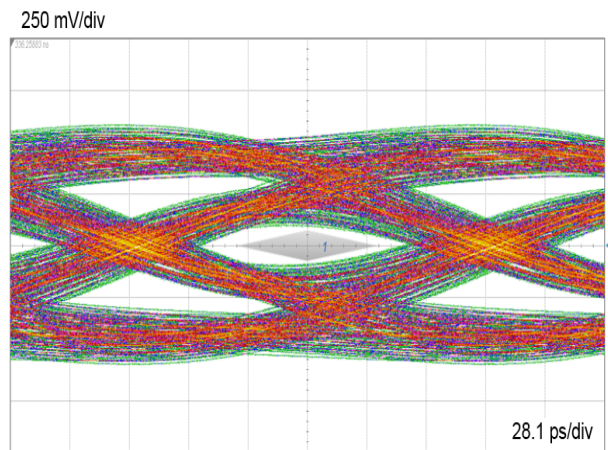
**Figure 8. HDMI1.4 – 1.485 Gbps eye diagram with device**



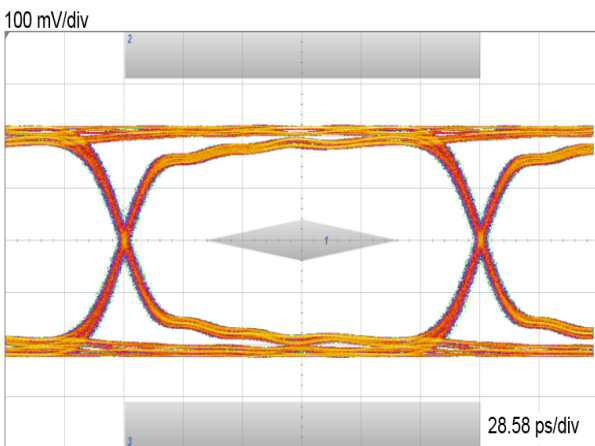
**Figure 9. HDMI2.0 – 5.94 Gbps eye diagram without device (with worst cable and equalizer)**



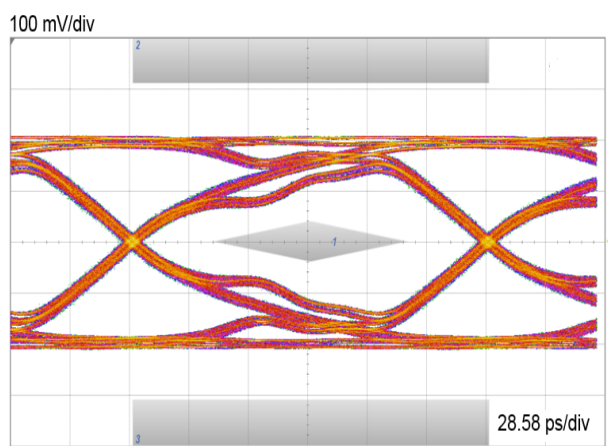
**Figure 10. HDMI2.0 – 5.94 Gbps eye diagram with device (with worst cable and equalizer)**



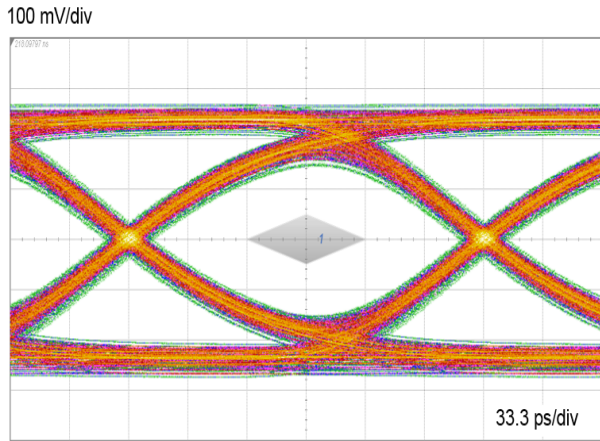
**Figure 11. MIPI - 5.83 Gbps eye diagram without device**



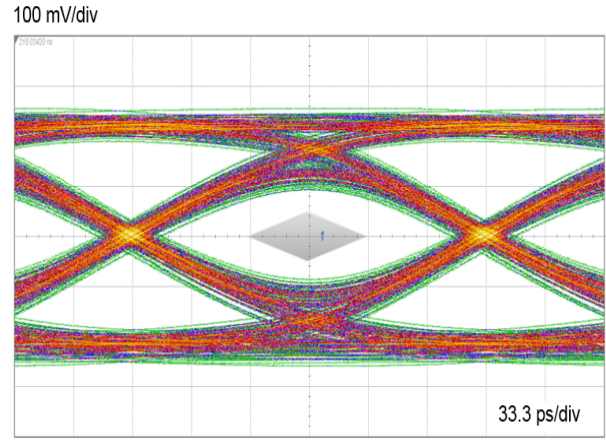
**Figure 12. MIPI - 5.83 Gbps eye diagram with device**



**Figure 13. USB3.1 – 5 Gbps eye diagram without device (with worst cable and equalizer)**



**Figure 14. USB3.1 – 5 Gbps eye diagram with device (with worst cable and equalizer)**



## 2 Package information

In order to meet environmental requirements, ST offers these devices in different grades of **ECOPACK** packages, depending on their level of environmental compliance. ECOPACK specifications, grade definitions and product status are available at: [www.st.com](http://www.st.com). ECOPACK is an ST trademark.

### 2.1 QFN-10L package information

Figure 15. QFN-10L package outline

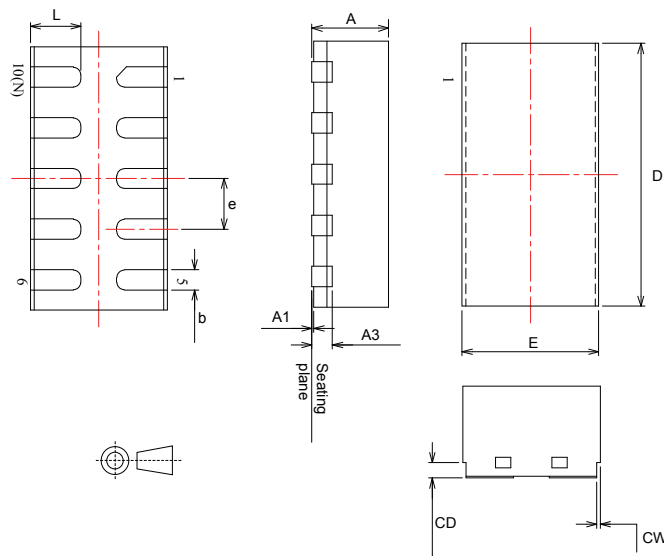


Table 3. QFN-10L mechanical data

Ref.	Dimensions					
	Millimeters			Inches <sup>(1)</sup>		
	Min.	Typ.	Max.	Min.	Typ.	Max.
A	0.70	0.75	0.80	0.0275	0.0295	0.0315
A1	0.00	0.02	0.05	0.0000	0.0008	0.0020
A3		0.20			0.0079	
b	0.15	0.20	0.25	0.0059	0.0079	0.0099
D	2.55	2.60	2.65	0.1003	0.1024	0.1044
E	1.30	1.35	1.40	0.0511	0.0531	0.0552
e		0.50			0.0197	
L	0.45	0.50	0.55	0.0177	0.0197	0.0217
CW	0.01	0.05	0.09	0.0003	0.0020	0.0032
CD	0.10			0.0039		

1. Value in inches are converted from mm and rounded to 4 decimal digits

### 3 PCB assembly recommendations

Figure 16. Recommended PCB layout

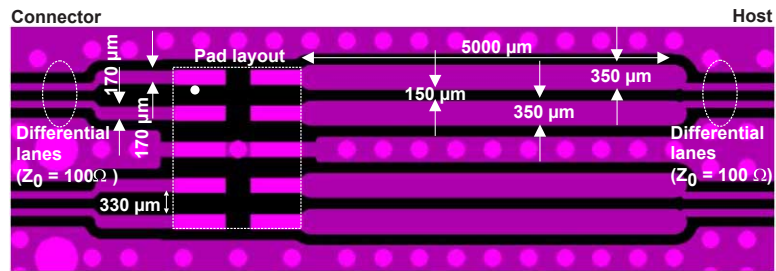


Figure 17. Recommended PCB stack-up

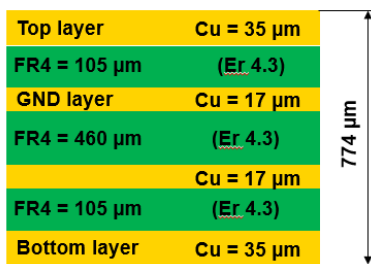


Figure 18. Recommended stencil opening (mm)

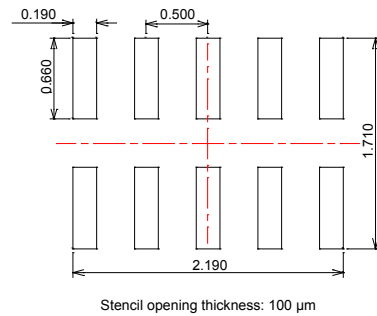


Figure 19. Wettable flank profile



#### 3.1 Solder paste

1. Halide-free flux qualification ROL0 according to ANSI/J-STD-004.
2. “No clean” solder paste is recommended.
3. Offers a high tack force to resist component movement during high speed.
4. Use solder paste with fine particles: powder particle size is 20-38 µm.

### 3.2 QFN-10L packing information

Figure 20. Footprint recommendations (mm)

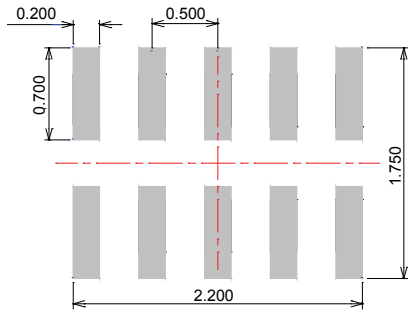
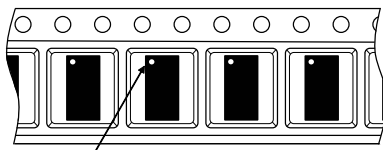


Figure 21. Marking



Dot indicates pin 1  
XX: Marking  
Y: Year  
M: Month

Figure 22. Package orientation in reel



Pin 1 located according to EIA-481

Note: Pocket dimensions are not on scale  
Pocket shape may vary depending on package

Figure 23. Tape and reel orientation

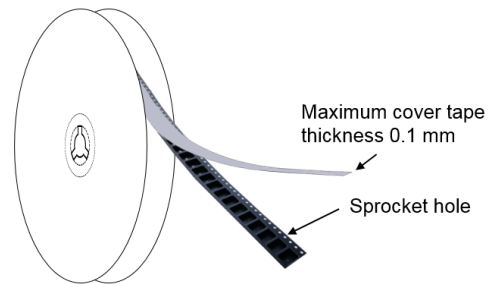


Figure 24. Reel dimensions (mm)

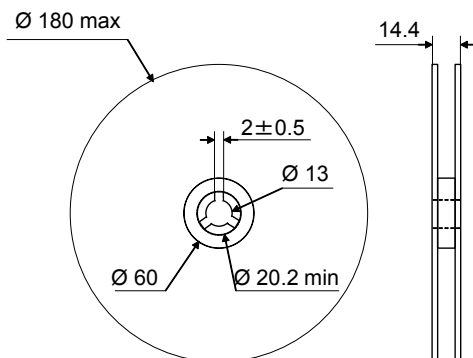
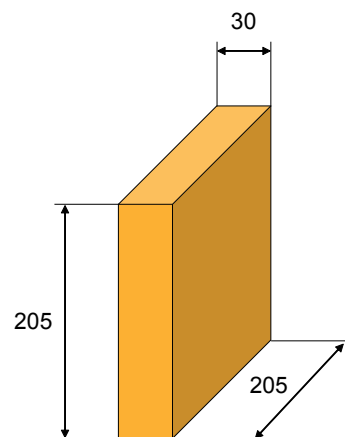
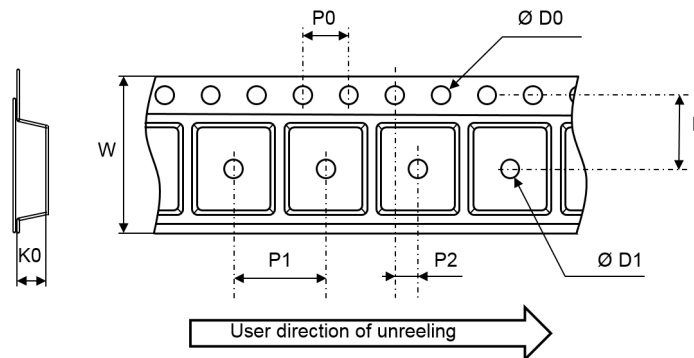


Figure 25. Inner box dimensions (mm)





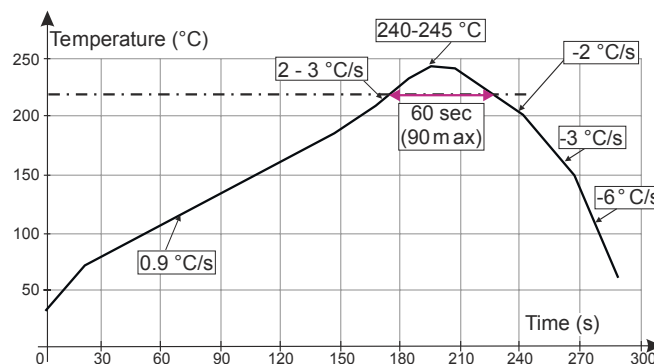
**Figure 26. Tape and reel outline**


Note: Pocket dimensions are not on scale  
Pocket shape may vary depending on package

**Table 4. Tape and reel mechanical data**

Ref.	Dimensions		
	Millimeters		
	Min.	Typ.	Max.
ØD0	1.40	1.50	1.50
ØD1	0.80		
F	1.65	1.75	1.85
K0	0.85	0.95	1.05
P0	3.9	4.0	4.1
P1	3.9	4.0	4.1
P2	1.95	2.00	2.05
W	7.9	8.0	8.3

### 3.3 Solder reflow

**Figure 27. ST ECOPACK® recommended soldering reflow profile for PCB mounting**


Note: Minimize air convection currents in the reflow oven to avoid component movement. Maximum soldering profile corresponds to the latest IPC/JEDEC J-STD-020.

## 4 Ordering information

Order code	Marking	Package	Weight	Base qty.	Delivery mode
ECMF04-4HSWM10Y	BY <sup>(1)</sup>	QFN-10L	7 mg	3000	Tape and reel

1. The marking can be rotated by 90° to differentiate assembly location

## Revision history

**Table 5. Document revision history**

Date	Version	Changes
17-Dec-2019	1	Initial release.

**IMPORTANT NOTICE – PLEASE READ CAREFULLY**

STMicroelectronics NV and its subsidiaries (“ST”) reserve the right to make changes, corrections, enhancements, modifications, and improvements to ST products and/or to this document at any time without notice. Purchasers should obtain the latest relevant information on ST products before placing orders. ST products are sold pursuant to ST’s terms and conditions of sale in place at the time of order acknowledgement.

Purchasers are solely responsible for the choice, selection, and use of ST products and ST assumes no liability for application assistance or the design of Purchasers’ products.

No license, express or implied, to any intellectual property right is granted by ST herein.

Resale of ST products with provisions different from the information set forth herein shall void any warranty granted by ST for such product.

ST and the ST logo are trademarks of ST. For additional information about ST trademarks, please refer to [www.st.com/trademarks](http://www.st.com/trademarks). All other product or service names are the property of their respective owners.

Information in this document supersedes and replaces information previously supplied in any prior versions of this document.

© 2019 STMicroelectronics – All rights reserved

## X-ON Electronics

Largest Supplier of Electrical and Electronic Components

*Click to view similar products for [ESD Suppressors / TVS Diodes](#) category:*

*Click to view products by [STMicroelectronics](#) manufacturer:*

Other Similar products are found below :

[60KS200C](#) [D12V0H1U2WS-7](#) [D18V0L1B2LP-7B](#) [82356050220](#) [D5V0M5U6V-7](#) [NTE4902](#) [P4KE27CA](#) [P6KE11CA](#) [P6KE39CA-TP](#)  
[P6KE8.2A](#) [SA110CA](#) [SA60CA](#) [SA64CA](#) [SMBJ12CATR](#) [SMBJ8.0A](#) [SMLJ30CA-TP](#) [ESD101-B1-02ELS E6327](#) [ESD112-B1-02EL E6327](#)  
[ESD119B1W01005E6327XTSA1](#) [ESD5V0J4-TP](#) [ESD5V0L1B02VH6327XTSA1](#) [ESD7451N2T5G](#) [19180-510](#) [CPDT-5V0USP-HF](#)  
[3.0SMCJ33CA-F](#) [3.0SMCJ36A-F](#) [HSPC16701B02TP](#) [D3V3Q1B2DLP3-7](#) [D55V0M1B2WS-7](#) [DESD5V0U1BL-7B](#) [DRTR5V0U4SL-7](#)  
[SCM1293A-04SO](#) [ESD200-B1-CSP0201 E6327](#) [ESD203-B1-02EL E6327](#) [SM12-7](#) [SMF8.0A-TP](#) [SMLJ45CA-TP](#) [CEN955 W/DATA](#)  
[82350120560](#) [82356240030](#) [VESD12A1A-HD1-GS08](#) [CPDUR5V0R-HF](#) [CPDUR24V-HF](#) [CPDQC5V0U-HF](#) [CPDQC5V0USP-HF](#)  
[CPDQC5V0-HF](#) [D1213A-01LP4-7B](#) [D1213A-02WL-7](#) [ESDLIN1524BJ-HQ](#) [5KP100A](#)