
CFL/TL ballast driver preheat and dimming demonstration board based on the L6574

Data brief



Features

- Dimmable fluorescent lamp ballast
- Multiple T8 lamps application
- Wide range input (85 Vac – 265 Vac)
- PF > 0.99, THD < 10%
- Fault ignition protection
- Lamp absence detection

Description

This design was developed to drive a TL fluorescent lamp of up to 58 W. It is composed of two sections: the PFC using the L6561 controller, and the ballast based on the L6574. The application includes a current feedback that can be used to control the power (and, if necessary, the dimming function) by varying the switching frequency during normal lamp operation. The application also features safety circuitry which activates when an open load or faulty lamp ignition is detected. The PFC pre-regulator allows connection of the application to a wide input voltage range (85 Vac to 265 Vac) providing a Power Factor higher than 0.99 and a THD lower than 10%.

1 Board description

Table 1: Board electrical specifications

Parameter	Value
Input voltage	85 Vac to 265 Vac
Power factor	> 0.99
THD	< 10%
Output power	Up to 58 W
Lamp configuration	Single lamp – tubular T8 model (32 W to 58 W)

Figure 1: Jumper and connector locations

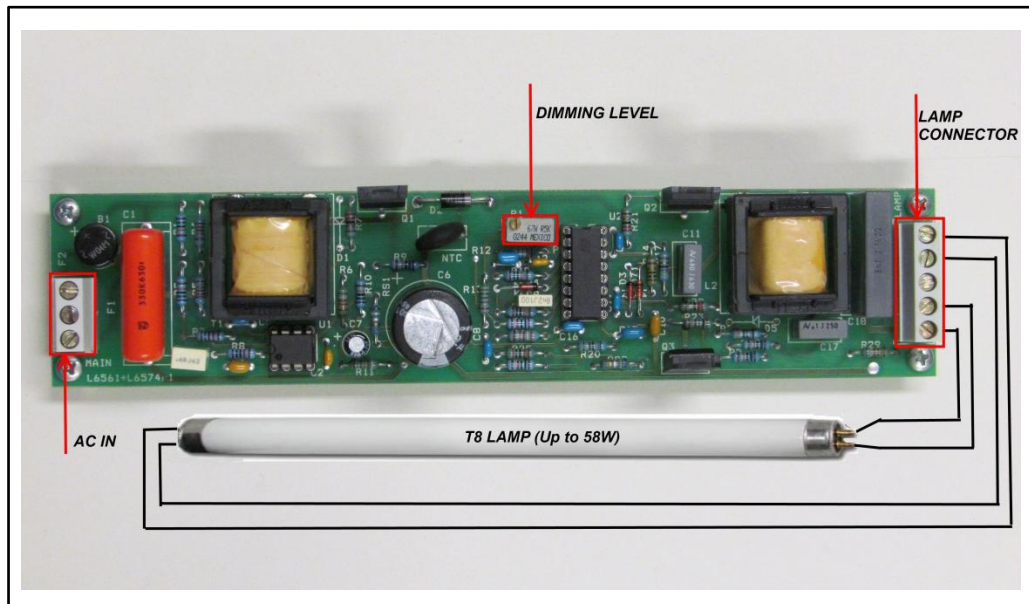


Table 2: Connector A pinout

Name	Type	Function
MAIN (AC IN)	Screw connector	Input voltage connection
LAMP	Screw connector	Lamp connection

Figure 2: Schematic

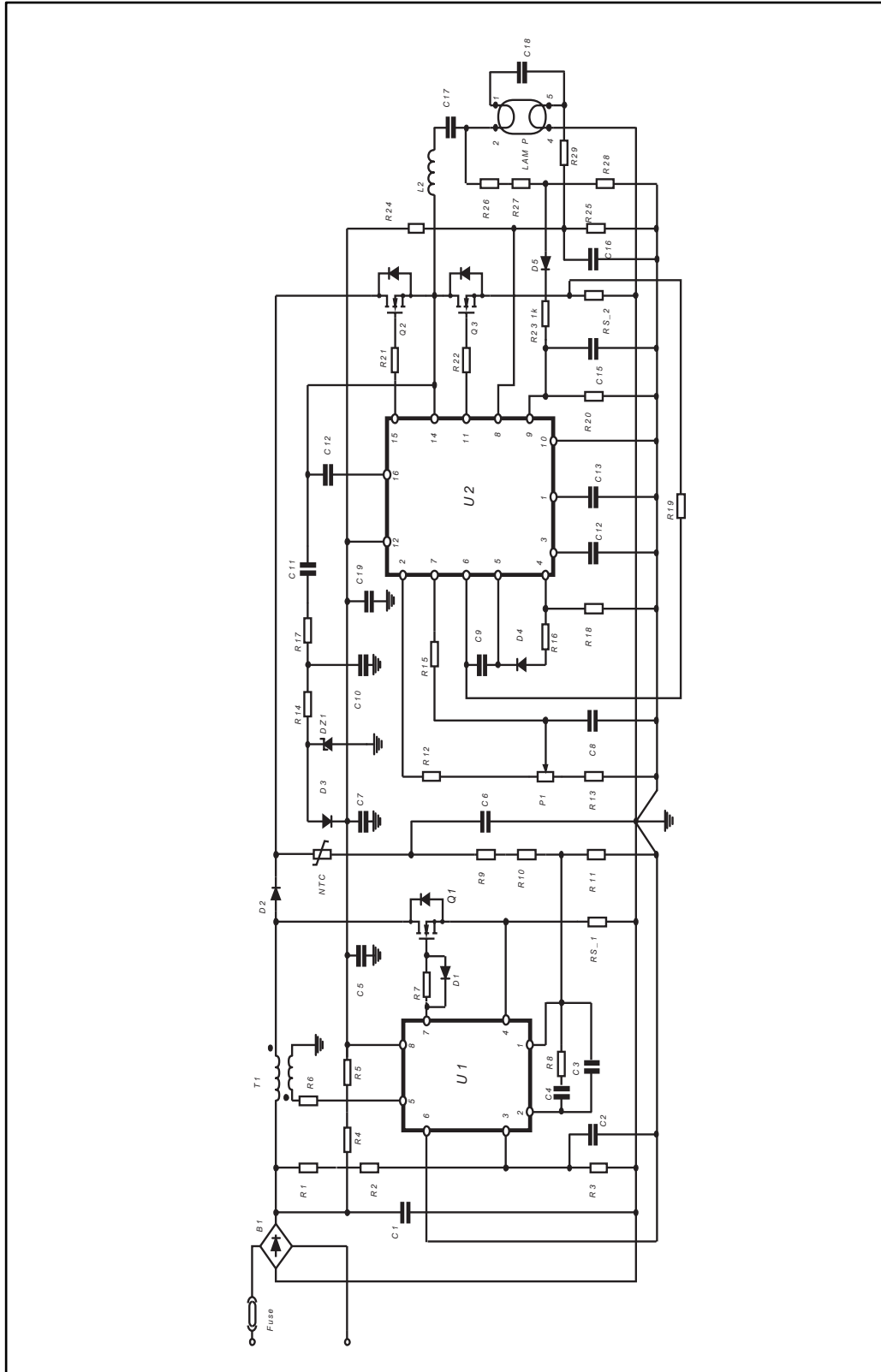


Table 3: Bill of material

Reference	Part value	Part description
R1	750 k Ω	Resistor 250 mW 1%
R2	750 k Ω	Resistor 250 mW 1%
R3	10 k Ω	Resistor 250 mW 1%
R4	120 k Ω	Resistor 250 mW 1%
R5	120 k Ω	Resistor 250 mW 1%
R6	68 k Ω	Resistor 250 mW 1%
R7	22 Ω	Resistor 250 mW 1%
R8	10 k Ω	Resistor 250 mW 1%
R9	750 k Ω	Resistor 250 mW 1%
R10	750 k Ω	Resistor 250 mW 1%
R11	9.53 k Ω	Resistor 250 mW 1%
R12	82 k Ω	Resistor 250 mW 1%
R13	1.5 k Ω	Resistor 250 mW 1%
R14	10 Ω	Resistor 250 mW 1%
R15	10 k Ω	Resistor 250 mW 1%
R16	100 k Ω	Resistor 250 mW 1%
R17	47 Ω	Resistor 250 mW 1%
R18	100 k Ω	Resistor 250 mW 1%
R19	10 k Ω	Resistor 250 mW 1%
R20	6.8 k Ω	Resistor 250 mW 1%
R21	22 Ω	Resistor 250 mW 1%
R22	22 Ω	Resistor 250 mW 1%
R23	1 k Ω	Resistor 250 mW 1%
R24	390 k Ω	Resistor 250 mW 1%
R25	20 k Ω	Resistor 250 mW 1%
R26	750 k Ω	Resistor 250 mW 1%
R27	750 k Ω	Resistor 250 mW 1%
R28	3.9 k Ω	Resistor 250 mW 1%
R29	6.8 k Ω	Resistor 250 mW 1%
RS_1	0.68 Ω	Resistor 250 mW 1%
RS_2	0.68 Ω	Resistor 250 mW 1%
P1	5 k Ω	Trimmer 10 turns (Bourns / Spectrol)
NTC1	5 Ω	Thermistor 3 W (EPCOS)
C1	330 nF	Film Capacitor 400 V (Panasonic / Rubycon)
C2	10 nF	Capacitor 50 V
C3	220 nF	Capacitor 50 V

Reference	Part value	Part description
C4	680 nF	Capacitor 50 V
C5	100 nF	Capacitor 50 V
C6	22 μ F	Electrolytic capacitor, 450 V low ESR
C7	4.7 μ F	Electrolytic capacitor, 35 V
C8	100 nF	Capacitor 50 V
C9	8.2 nF	Capacitor 50 V
C10	4.7 nF	Capacitor 50 V
C11	680 pF	Film capacitor 630 Vdc
C12	100 nF	Capacitor 50 V
C13	1 μ F	Capacitor 50 V
C14	100 nF	Capacitor 50 V
C15	330 nF	Capacitor 50 V
C16	470 nF	Capacitor 50 V
C17	100 nF	Polypropilene capacitor 250 Vdc
C18	8.2 nF	Polypropilene capacitor 1600 Vdc
C19	100 nF	Capacitor 50 V
F1	T 2A	Fuse 250 Vac – 2 A
T1		PFC transformer: 1.88 mH, 138 : 13 turns, core E25 – N87 or eq.
L2	2.1 mH	Ballast inductor: 2 mH, 146 turns, core E25 – N87 or eq.
B1	W04M	Rectifier bridge 4 A – 600 V
D1	1N4148	Diode
D2	STTH1L06	Turbo 2 ultrafast high voltage rectifier
D3	1N4148	Diode
D4	1N4148	Diode
D5	1N4148	Diode
DZ1	BZX79C15	15 V Zener diode
U1	L6562	PFC controller
U2	L6574	Ballast controller
Q1	STP5NK50Z	N-channel 500 V – 1.22 Ω Zener-protected SuperMESH™ Power MOSFET
Q2	STP4NK50Z	N-channel 500 V – 2.4 Ω Zener-protected SuperMESH™ Power MOSFET
Q3	STP4NK50Z	N-channel 500 V – 2.4 Ω Zener-protected SuperMESH™ Power MOSFET
CN1		3 way PCB connector 250 Vac, Pin distance 5.08 mm
CN2		5 way PCB connector 250 Vac Pin distance 5.08 mm

Figure 3: Layout (top layer)

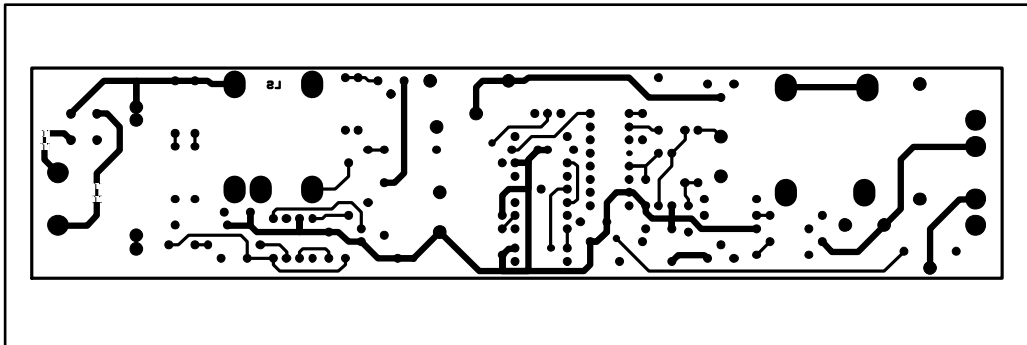


Figure 4: Layout (bottom layer)

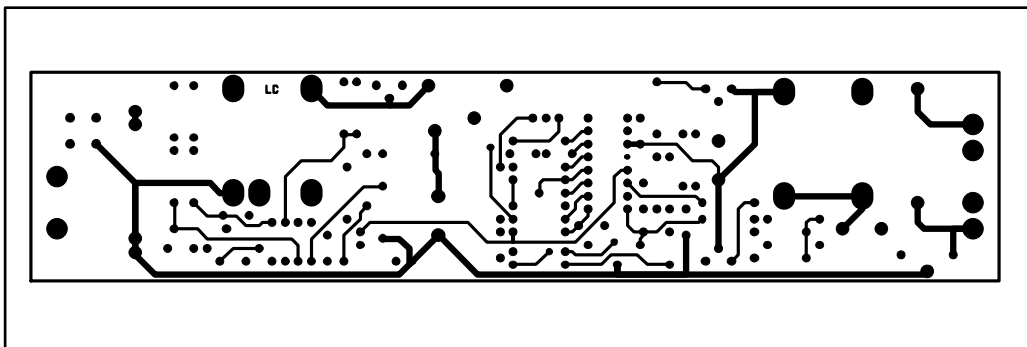
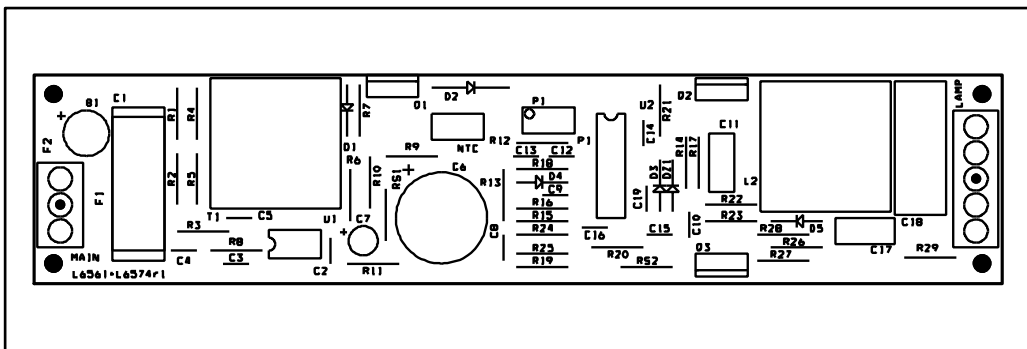


Figure 5: Layout (silk screen)



2 Revision history

Table 4: Document revision history

Date	Revision	Changes
23-May-2013	1	First release

Please Read Carefully

Information in this document is provided solely in connection with ST products. STMicroelectronics NV and its subsidiaries ("ST") reserve the right to make changes, corrections, modifications or improvements, to this document, and the products and services described herein at any time, without notice.

All ST products are sold pursuant to ST's terms and conditions of sale.

Purchasers are solely responsible for the choice, selection and use of the ST products and services described herein, and ST assumes no liability whatsoever relating to the choice, selection or use of the ST products and services described herein.

No license, express or implied, by estoppel or otherwise, to any intellectual property rights is granted under this document. If any part of this document refers to any third party products or services it shall not be deemed a license grant by ST for the use of such third party products or services, or any intellectual property contained therein or considered as a warranty covering the use in any manner whatsoever of such third party products or services or any intellectual property contained therein.

UNLESS OTHERWISE SET FORTH IN ST'S TERMS AND CONDITIONS OF SALE ST DISCLAIMS ANY EXPRESS OR IMPLIED WARRANTY WITH RESPECT TO THE USE AND/OR SALE OF ST PRODUCTS INCLUDING WITHOUT LIMITATION IMPLIED WARRANTIES OF MERCHANTABILITY, FITNESS FOR A PARTICULAR PURPOSE (AND THEIR EQUIVALENTS UNDER THE LAWS OF ANY JURISDICTION), OR INFRINGEMENT OF ANY PATENT, COPYRIGHT OR OTHER INTELLECTUAL PROPERTY RIGHT.

ST PRODUCTS ARE NOT AUTHORIZED FOR USE IN WEAPONS. NOR ARE ST PRODUCTS DESIGNED OR AUTHORIZED FOR USE IN: (A) SAFETY CRITICAL APPLICATIONS SUCH AS LIFE SUPPORTING, ACTIVE IMPLANTED DEVICES OR SYSTEMS WITH PRODUCT FUNCTIONAL SAFETY REQUIREMENTS; (B) AERONAUTIC APPLICATIONS; (C) AUTOMOTIVE APPLICATIONS OR ENVIRONMENTS, AND/OR (D) AEROSPACE APPLICATIONS OR ENVIRONMENTS. WHERE ST PRODUCTS ARE NOT DESIGNED FOR SUCH USE, THE PURCHASER SHALL USE PRODUCTS AT PURCHASER'S SOLE RISK, EVEN IF ST HAS BEEN INFORMED IN WRITING OF SUCH USAGE, UNLESS A PRODUCT IS EXPRESSLY DESIGNATED BY ST AS BEING INTENDED FOR "AUTOMOTIVE, AUTOMOTIVE SAFETY OR MEDICAL" INDUSTRY DOMAINS ACCORDING TO ST PRODUCT DESIGN SPECIFICATIONS. PRODUCTS FORMALLY ESCC, QML OR JAN QUALIFIED ARE DEEMED SUITABLE FOR USE IN AEROSPACE BY THE CORRESPONDING GOVERNMENTAL AGENCY.

Resale of ST products with provisions different from the statements and/or technical features set forth in this document shall immediately void any warranty granted by ST for the ST product or service described herein and shall not create or extend in any manner whatsoever, any liability of ST.

ST and the ST logo are trademarks or registered trademarks of ST in various countries.

Information in this document supersedes and replaces all information previously supplied.

The ST logo is a registered trademark of STMicroelectronics. All other names are the property of their respective owners.

© 2013 STMicroelectronics - All rights reserved

STMicroelectronics group of companies

Australia - Belgium - Brazil - Canada - China - Czech Republic - Finland - France - Germany - Hong Kong - India - Israel - Italy
- Japan - Malaysia - Malta - Morocco - Philippines - Singapore - Spain - Sweden - Switzerland - United Kingdom - United
States of America

www.st.com

X-ON Electronics

Largest Supplier of Electrical and Electronic Components

Click to view similar products for [Power Management IC Development Tools](#) category:

Click to view products by [STMicroelectronics](#) manufacturer:

Other Similar products are found below :

[EVAL-ADM1168LQEBZ](#) [EVB-EP5348UI](#) [MIC23451-AAAYFL EV](#) [MIC5281YMME EV](#) [DA9063-EVAL](#) [ADP122-3.3-EVALZ](#) [ADP130-0.8-EVALZ](#) [ADP130-1.2-EVALZ](#) [ADP130-1.5-EVALZ](#) [ADP130-1.8-EVALZ](#) [ADP1714-3.3-EVALZ](#) [ADP1716-2.5-EVALZ](#) [ADP1740-1.5-EVALZ](#) [ADP1752-1.5-EVALZ](#) [ADP1828LC-EVALZ](#) [ADP1870-0.3-EVALZ](#) [ADP1871-0.6-EVALZ](#) [ADP1873-0.6-EVALZ](#) [ADP1874-0.3-EVALZ](#) [ADP1882-1.0-EVALZ](#) [ADP199CB-EVALZ](#) [ADP2102-1.25-EVALZ](#) [ADP2102-1.875EVALZ](#) [ADP2102-1.8-EVALZ](#) [ADP2102-2-EVALZ](#) [ADP2102-3-EVALZ](#) [ADP2102-4-EVALZ](#) [ADP2106-1.8-EVALZ](#) [ADP2147CB-110EVALZ](#) [AS3606-DB](#) [BQ24010EVM](#) [BQ24075TEVM](#) [BQ24155EVM](#) [BQ24157EVM-697](#) [BQ24160EVM-742](#) [BQ24296MEVM-655](#) [BQ25010EVM](#) [BQ3055EVM](#) [NCV891330PD50GEVB](#) [ISLUSBI2CKIT1Z](#) [LM2744EVAL](#) [LM2854EVAL](#) [LM3658SD-AEV/NOPB](#) [LM3658SDEV/NOPB](#) [LM3691TL-1.8EV/NOPB](#) [LM4510SDEV/NOPB](#) [LM5033SD-EVAL](#) [LP38512TS-1.8EV](#) [EVAL-ADM1186-1MBZ](#) [EVAL-ADM1186-2MBZ](#)