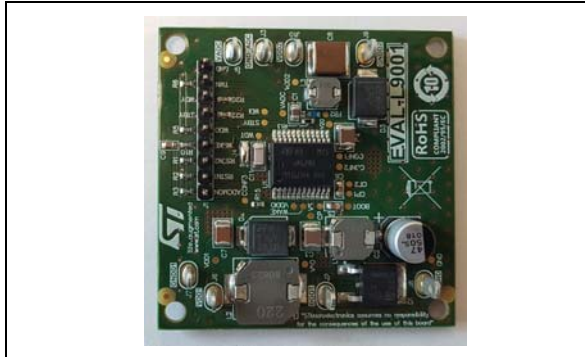


EVAL-L9001 evaluation board

Data brief



- Device Package: PowerSSO-24 (exposed pad down)
- Low cost and ready to use

Description

EVAL-L9001 is a low cost tool designed to evaluate L9001, a smart power device designed by STMicroelectronics in advanced BCD technology.

L9001 SPS (Simple Power Supply) device is a Multiple output power regulator for automotive applications with one buck regulator, one regulator configurable as buck or linear and one more linear regulator. Its output voltages are configurable via discrete pins. On top of the regulators, this device integrates a watchdog functional block, and a diagnosis functional block (under/over voltage, output current and temperature).

Device is capable of low power operation mode with main regulators still active and reduced power consumption from battery.

EVAL-L9001 embeds a typical configuration for SPC5x microcontroller family supplying:

Buck 5 V output for peripheral supply

Buck 1.2 V output for core supply

LDO 5 V output for ADC reference supply

The expansion connector allows to monitor the different diagnostic reset signal, to enable the regulator and, if activated, to service the windows watchdog.

Features

- Input voltage: 5.5 V to 18 V.
- Voltage regulator for multiple power supply schemes:
 - First stage asynchronous switch mode regulator (VDD1) 5 V output,
 - Second stage regulator (VDD2) supplied by VDD1 with 1.2 V output (i.e. μ C-core)
 - DC LDO 5 V for ADC μ C supply
- Supervision and diagnosis:
 - VS monitoring
 - Over temperature detection
 - Output supply supervision
 - Output overcurrent protection
- Fail-safe functionality:
 - Output under or over voltage reset generation
 - Configurable Watchdog
 - Over temperature shutdown
 - Low power mode
- Access to all relevant pins by test points
- Input/output signal connector for Watchdog servicing and diagnosis output
- Possibility to enable/disable Watchdog function

Table 1. Device summary

Order codes	Reference
EVAL-L9901	EVAL-L9901 Evaluation board

Contents

1	System requirements, HW and SW resources	3
2	Revision history	4

1 System requirements, HW and SW resources

- Power Supply: 5.5 V ÷ 18 V; up to 3 A
- Multimeter
- Minimum 3 CH oscilloscope (optional)
- Signal generator or uC for watchdog service (optional)

2 Revision history

Table 2. Document revision history

Date	Revision	Changes
03-June-2019	1	Initial release.

IMPORTANT NOTICE – PLEASE READ CAREFULLY

STMicroelectronics NV and its subsidiaries (“ST”) reserve the right to make changes, corrections, enhancements, modifications, and improvements to ST products and/or to this document at any time without notice. Purchasers should obtain the latest relevant information on ST products before placing orders. ST products are sold pursuant to ST’s terms and conditions of sale in place at the time of order acknowledgement.

Purchasers are solely responsible for the choice, selection, and use of ST products and ST assumes no liability for application assistance or the design of Purchasers’ products.

No license, express or implied, to any intellectual property right is granted by ST herein.

Resale of ST products with provisions different from the information set forth herein shall void any warranty granted by ST for such product.

ST and the ST logo are trademarks of ST. For additional information about ST trademarks, please refer to www.st.com/trademarks. All other product or service names are the property of their respective owners.

Information in this document supersedes and replaces information previously supplied in any prior versions of this document.

© 2019 STMicroelectronics – All rights reserved

X-ON Electronics

Largest Supplier of Electrical and Electronic Components

Click to view similar products for [Power Management IC Development Tools](#) category:

Click to view products by [STMicroelectronics](#) manufacturer:

Other Similar products are found below :

[EVAL-ADM1168LQEBZ](#) [EVB-EP5348UI](#) [MIC23451-AAAYFL EV](#) [MIC5281YMME EV](#) [DA9063-EVAL](#) [ADP122-3.3-EVALZ](#) [ADP130-0.8-EVALZ](#) [ADP130-1.2-EVALZ](#) [ADP130-1.5-EVALZ](#) [ADP130-1.8-EVALZ](#) [ADP1714-3.3-EVALZ](#) [ADP1716-2.5-EVALZ](#) [ADP1740-1.5-EVALZ](#) [ADP1752-1.5-EVALZ](#) [ADP1828LC-EVALZ](#) [ADP1870-0.3-EVALZ](#) [ADP1871-0.6-EVALZ](#) [ADP1873-0.6-EVALZ](#) [ADP1874-0.3-EVALZ](#) [ADP1882-1.0-EVALZ](#) [ADP199CB-EVALZ](#) [ADP2102-1.25-EVALZ](#) [ADP2102-1.875EVALZ](#) [ADP2102-1.8-EVALZ](#) [ADP2102-2-EVALZ](#) [ADP2102-3-EVALZ](#) [ADP2102-4-EVALZ](#) [ADP2106-1.8-EVALZ](#) [ADP2147CB-110EVALZ](#) [AS3606-DB](#) [BQ24010EVM](#) [BQ24075TEVM](#) [BQ24155EVM](#) [BQ24157EVM-697](#) [BQ24160EVM-742](#) [BQ24296MEVM-655](#) [BQ25010EVM](#) [BQ3055EVM](#) [NCV891330PD50GEVB](#) [ISLUSBI2CKIT1Z](#) [LM2744EVAL](#) [LM2854EVAL](#) [LM3658SD-AEV/NOPB](#) [LM3658SDEV/NOPB](#) [LM3691TL-1.8EV/NOPB](#) [LM4510SDEV/NOPB](#) [LM5033SD-EVAL](#) [LP38512TS-1.8EV](#) [EVAL-ADM1186-1MBZ](#) [EVAL-ADM1186-2MBZ](#)