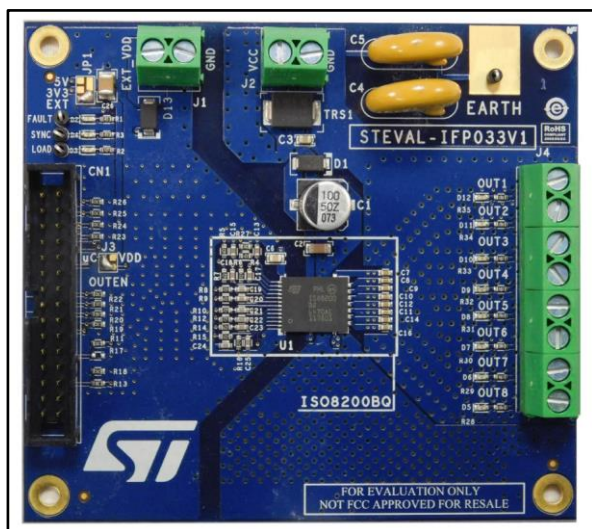


Galvanically-isolated 8 channel high-side driver based on the ISO8200BQ

Data brief



Features

- V_{CC} operating voltage from 10.5 to 33 V
- 0.7 A for each channel
- Reverse polarity protection on V_{CC} and V_{DD} supply voltage
- Digital supply voltage V_{DD} 3.3 / 5 V
- Microcontroller interface direct/synchronous mode communication
- Designed to meet requirements of IEC 61000-4-2, IEC 61000-4-4 and IEC 61000-4-5 standards
- RoHS compliant

Description

The STEVAL-IFP033V1 functions with the STEVAL-PCC009V2 or STEVAL-PCC009V1 interface board to allow evaluation of the ISO8200BQ device. A large GND area on the printed circuit board is included to minimize noise effects and ensure good thermal performance.

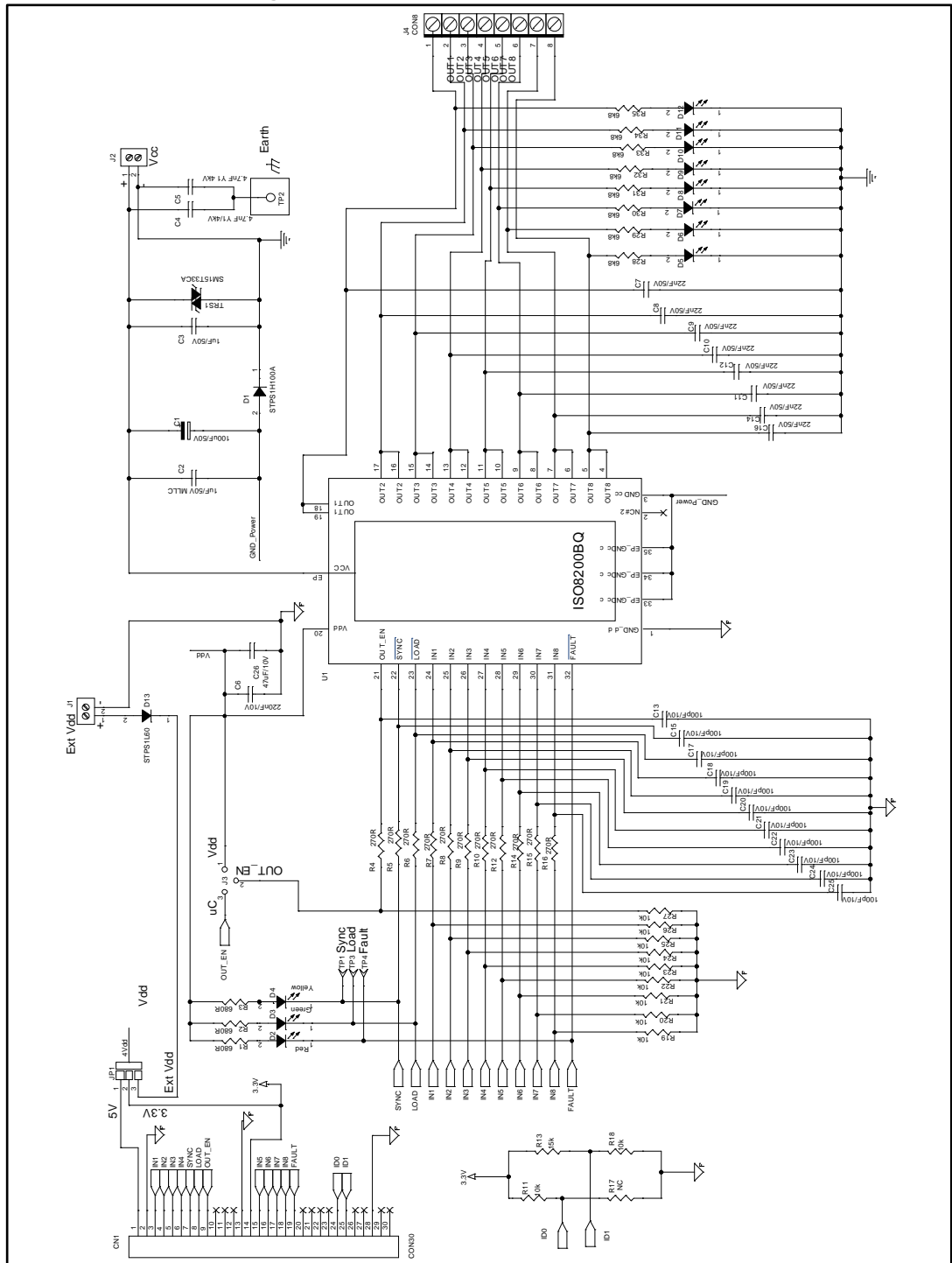
The ISO8200BQ is a galvanic isolated 8 channel driver featuring a very low supply current. It contains two independent galvanic isolated voltage domains (V_{CC} for the power stage and V_{DD} for the digital stage). The IC is intended to drive any type of load with one side connected to ground. Independent active channel current limitation combined with thermal shutdown for each channel and automatic restart protect the device against overload. Other embedded functions include loss of GND protection which automatically turns off the outputs in case of analog ground, undervoltage shutdown with hysteresis and a reset function for immediate power output shutdown.

Built-in thermal shutdown protects the chip against overtemperature and short-circuit. The channel is turned off in the overload condition and switched back on automatically once the IC temperature decreases below the reset threshold. If this condition causes the case temperature to reach the TCR limit, the overloaded channel is turned off and will only restart when case and junction temperature decreased down to the reset threshold. Non overloaded channels continue to operate normally.

An internal circuit provides an OR-wired non latched common FAULT indicator signaling channel OVT. The FAULT pin is an open-drain active-low fault indication pin.

1 Schematic diagram

Figure 1: STEVAL-IFP033V1 circuit schematic



2 Revision history

Table 1: Document revision history

Date	Version	Changes
09-Jun-2017	1	Initial release.

IMPORTANT NOTICE – PLEASE READ CAREFULLY

STMicroelectronics NV and its subsidiaries ("ST") reserve the right to make changes, corrections, enhancements, modifications, and improvements to ST products and/or to this document at any time without notice. Purchasers should obtain the latest relevant information on ST products before placing orders. ST products are sold pursuant to ST's terms and conditions of sale in place at the time of order acknowledgement.

Purchasers are solely responsible for the choice, selection, and use of ST products and ST assumes no liability for application assistance or the design of Purchasers' products.

No license, express or implied, to any intellectual property right is granted by ST herein.

Resale of ST products with provisions different from the information set forth herein shall void any warranty granted by ST for such product.

ST and the ST logo are trademarks of ST. All other product or service names are the property of their respective owners.

Information in this document supersedes and replaces information previously supplied in any prior versions of this document.

© 2017 STMicroelectronics – All rights reserved

X-ON Electronics

Largest Supplier of Electrical and Electronic Components

Click to view similar products for [Power Management IC Development Tools](#) category:

Click to view products by [STMicroelectronics](#) manufacturer:

Other Similar products are found below :

[EVAL-ADM1168LQEBZ](#) [EVB-EP5348UI](#) [MIC23451-AAAYFL EV](#) [MIC5281YMME EV](#) [DA9063-EVAL](#) [ADP122-3.3-EVALZ](#) [ADP130-0.8-EVALZ](#) [ADP130-1.2-EVALZ](#) [ADP130-1.5-EVALZ](#) [ADP130-1.8-EVALZ](#) [ADP1714-3.3-EVALZ](#) [ADP1715-3.3-EVALZ](#) [ADP1716-2.5-EVALZ](#) [ADP1740-1.5-EVALZ](#) [ADP1752-1.5-EVALZ](#) [ADP1828LC-EVALZ](#) [ADP1870-0.3-EVALZ](#) [ADP1871-0.6-EVALZ](#) [ADP1873-0.6-EVALZ](#) [ADP1874-0.3-EVALZ](#) [ADP1882-1.0-EVALZ](#) [ADP199CB-EVALZ](#) [ADP2102-1.25-EVALZ](#) [ADP2102-1.875EVALZ](#) [ADP2102-1.8-EVALZ](#) [ADP2102-2-EVALZ](#) [ADP2102-3-EVALZ](#) [ADP2102-4-EVALZ](#) [ADP2106-1.8-EVALZ](#) [ADP2147CB-110EVALZ](#) [AS3606-DB](#) [BQ24010EVM](#) [BQ24075TEVM](#) [BQ24155EVM](#) [BQ24157EVM-697](#) [BQ24160EVM-742](#) [BQ24296MEVM-655](#) [BQ25010EVM](#) [BQ3055EVM](#) [NCV891330PD50GEVB](#) [ISLUSBI2CKIT1Z](#) [LM2744EVAL](#) [LM2854EVAL](#) [LM3658SD-AEV/NOPB](#) [LM3658SDEV/NOPB](#) [LM3691TL-1.8EV/NOPB](#) [LM4510SDEV/NOPB](#) [LM5033SD-EVAL](#) [LP38512TS-1.8EV](#) [EVAL-ADM1186-1MBZ](#)