

5 V / 0.6 A Buck converter based on VIPER319X



Features

- Universal input mains range: 85–265VAC
- Frequency: 50-60 Hz
- Output voltage: 5 V
- Output current: 0.6 A
- Input power consumption in no load condition: < 16 mW at 230VAC
- 4-point average active mode efficiency at full load: > 69.7% (compliant with European CoC ver. 5)
- 4-point average active mode efficiency at 10% full load: > 60.58% (compliant with European CoC ver. 5)
- Meets IEC55022 Class B conducted EMI
- RoHS compliant

Description

The **STEVAL-VP319X1B** evaluation board implements a 5V/3W Buck converter developed for general purpose applications, operating from 85 to 265VAC.

If the size of the input bulk capacitors is increased, the evaluation board is able to supply the 3 W in extended range (40 – 265VAC).

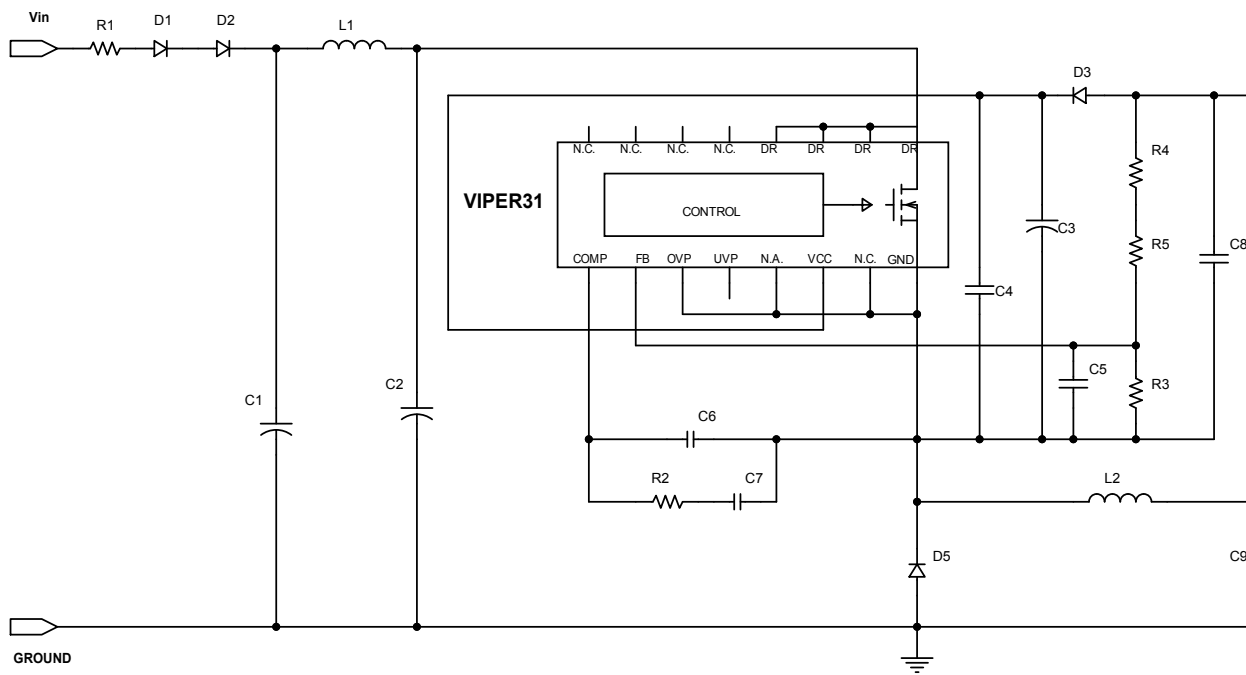
The reference design is built around the new **VIPER319X**, an offline high-voltage converter of the VIPERPlus family with 800 V avalanche-rugged Power MOSFET, PWM current-mode control, fixed 30 kHz switching frequency with jittering to satisfy electromagnetic disturbance standards, burst mode for light load management.

The main features of the evaluation board are: small size, minimal BOM, high efficiency, low stand-by consumption.

Product summary	
5 V/0.6 A buck converter based on VIPER319X	STEVAL-VP319X1B
Energy Saving Off-line High Voltage Converter	VIPER319X
Applications	Non-Isolated Auxiliary Power Supply up to 20 W

1 Schematic diagrams

Figure 1. STEVAL-VP319X1B circuit schematic



Revision history

Table 1. Document revision history

Date	Version	Changes
15-Sep-2020	1	Initial release.

IMPORTANT NOTICE – PLEASE READ CAREFULLY

STMicroelectronics NV and its subsidiaries (“ST”) reserve the right to make changes, corrections, enhancements, modifications, and improvements to ST products and/or to this document at any time without notice. Purchasers should obtain the latest relevant information on ST products before placing orders. ST products are sold pursuant to ST’s terms and conditions of sale in place at the time of order acknowledgement.

Purchasers are solely responsible for the choice, selection, and use of ST products and ST assumes no liability for application assistance or the design of Purchasers’ products.

No license, express or implied, to any intellectual property right is granted by ST herein.

Resale of ST products with provisions different from the information set forth herein shall void any warranty granted by ST for such product.

ST and the ST logo are trademarks of ST. For additional information about ST trademarks, please refer to www.st.com/trademarks. All other product or service names are the property of their respective owners.

Information in this document supersedes and replaces information previously supplied in any prior versions of this document.

© 2020 STMicroelectronics – All rights reserved

X-ON Electronics

Largest Supplier of Electrical and Electronic Components

Click to view similar products for [Power Management IC Development Tools](#) category:

Click to view products by [STMicroelectronics](#) manufacturer:

Other Similar products are found below :

[EVAL-ADM1168LQEBZ](#) [EVB-EP5348UI](#) [MIC23451-AAAYFL EV](#) [MIC5281YMME EV](#) [DA9063-EVAL](#) [ADP122-3.3-EVALZ](#) [ADP130-0.8-EVALZ](#) [ADP130-1.2-EVALZ](#) [ADP130-1.5-EVALZ](#) [ADP130-1.8-EVALZ](#) [ADP1712-3.3-EVALZ](#) [ADP1714-3.3-EVALZ](#) [ADP1715-3.3-EVALZ](#) [ADP1716-2.5-EVALZ](#) [ADP1740-1.5-EVALZ](#) [ADP1752-1.5-EVALZ](#) [ADP1828LC-EVALZ](#) [ADP1870-0.3-EVALZ](#) [ADP1871-0.6-EVALZ](#) [ADP1873-0.6-EVALZ](#) [ADP1874-0.3-EVALZ](#) [ADP1882-1.0-EVALZ](#) [ADP199CB-EVALZ](#) [ADP2102-1.25-EVALZ](#) [ADP2102-1.875EVALZ](#) [ADP2102-1.8-EVALZ](#) [ADP2102-2-EVALZ](#) [ADP2102-3-EVALZ](#) [ADP2102-4-EVALZ](#) [ADP2106-1.8-EVALZ](#) [ADP2147CB-110EVALZ](#) [AS3606-DB](#) [BQ24010EVM](#) [BQ24075TEVM](#) [BQ24155EVM](#) [BQ24157EVM-697](#) [BQ24160EVM-742](#) [BQ24296MEVM-655](#) [BQ25010EVM](#) [BQ3055EVM](#) [NCV891330PD50GEVB](#) [ISLUSBI2CKIT1Z](#) [LM2744EVAL](#) [LM2854EVAL](#) [LM3658SD-AEV/NOPB](#) [LM3658SDEV/NOPB](#) [LM3691TL-1.8EV/NOPB](#) [LM4510SDEV/NOPB](#) [LM5033SD-EVAL](#) [LP38512TS-1.8EV](#)