



12V/24V Electro-Magnetic Door/Gate Lock

For use in exposed, outdoor locations, this robust and weather resistant mag-lock is ideal for installation at external doors or perimeter gates.

Unlike conventional locks Storm AXS surface mounted mag-locks require minimal modification of doors or frames and are ideal for all types of doors, including iron doors and gates, glass doors or doors surrounded by glass panels. Installation is quick and easy using basic tools (no carpentry skills required).

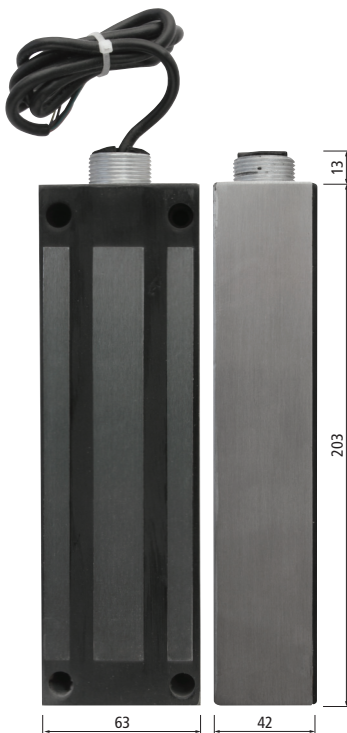
Doors and frames are not weakened or compromised during installation. The installed lock is discreet but very secure. With up to 1200 pounds holding force; most doors or gates will break before the lock lets go.

The lock is supplied complete with fixing brackets, armature plates and comprehensive installation instructions for both inward and outward opening doors or gates.

There are Storm AXS Mag-locks available for both external and internal doors.

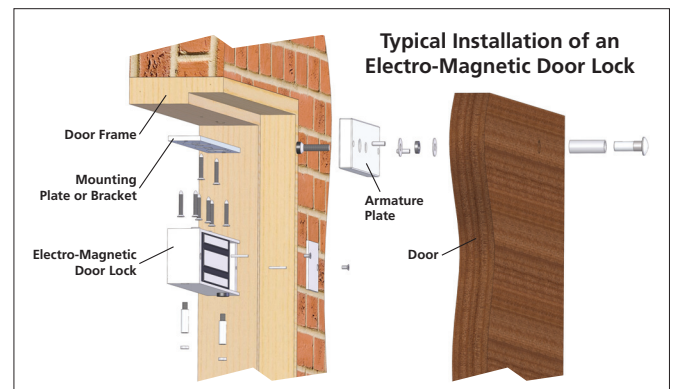


- Rated for continuous use in exposed outdoor environments
- Dual Voltage
500mA / 12VDC
250mA / 24VDC
- Supplied complete with armature and fixing hardware
- Integral voltage spike suppressor
- 2 Year limited warranty
- Designed to meet UL/cUL/CE/FCC requirements



All dimensions in mm

Description	12V/24V DC Electro-Magnetic Door Lock
Model	DEGL1200
Holding Force	1200 Pounds
Installation Environment	Secured perimeter High security Exposed external locations



For more information & to order:

www.storm-interface.com

Specified for use with Storm AXS Access Control Solutions

- Storm-AXS StrikeMaster keypads
- Storm-AXS Power supply
- Storm-AXS Touch-free exit switch
- Storm-AXS Emergency override switch (break glass)

Part Numbers

- DR2KW20, DR2KT20, DE1KT10
- DEPS030
- DEEX010
- DEEM010



Whilst every effort is made to ensure details are correct at time of print, specifications are subject to change without notice.

Designed & produced by NIK Design
nik@nikdesign.co.uk

Storm Interface products include technology protected by international patents and design registration. All rights reserved.



BSI REGISTERED

Storm is a trademark of Keymat Technology Ltd. Storm Interface is a trading name of Keymat Technology Ltd.

DEGL1200 July 2014



FM 39602



X-ON Electronics

Largest Supplier of Electrical and Electronic Components

Click to view similar products for [Sensor Fixings & Accessories](#) category:

Click to view products by [Storm Interface](#) manufacturer:

Other Similar products are found below :

[F03-01 SUS304 BINIL](#) [8000-5130](#) [FH-AP1](#) [PH-1-10M](#) [PH-1-20M](#) [PH-2-30M](#) [AC201](#) [R4](#) [ADI-LC3S](#) [E39-L149](#) [EC18-WELL](#) [PC-15015](#)
[K35-4](#) [A-1923](#) [SS-12143](#) [STA12](#) [AP4-T](#) [PH-1-50M](#) [R6](#) [D01051301](#) [43912557-020](#) [MF-1 D=3.2](#) [BGN-035](#) [E39-L7](#) [ZX-SB11](#) [D01070602](#)
[606072](#) [606075](#) [Y92ES12PVC4A10ML](#) [Y92ES12PVC4S5ML](#) [SA9Z-F11](#) [Z49-SF1](#) [ZFV-XMF2](#) [E4R-R12A-CS3M010](#) [ZX-SW11E V3](#)
[CCS-PL-LDR2-70](#) [E4R-R12A-CS3M020](#) [BS-1T CHITAN](#) [F03-01 CHITAN](#) [CCS-PD2-1012](#) [PH-2-90M](#) [PH-2-5M](#) [XMLZL008](#) [AC244](#)
[28810-1](#) [PH-1-40M](#) [SS-12225](#) [32043-500](#) [81532111](#) [PH-2-60M](#)