



TOLERANCE UNLESS OTHERWISE SPECIFIED

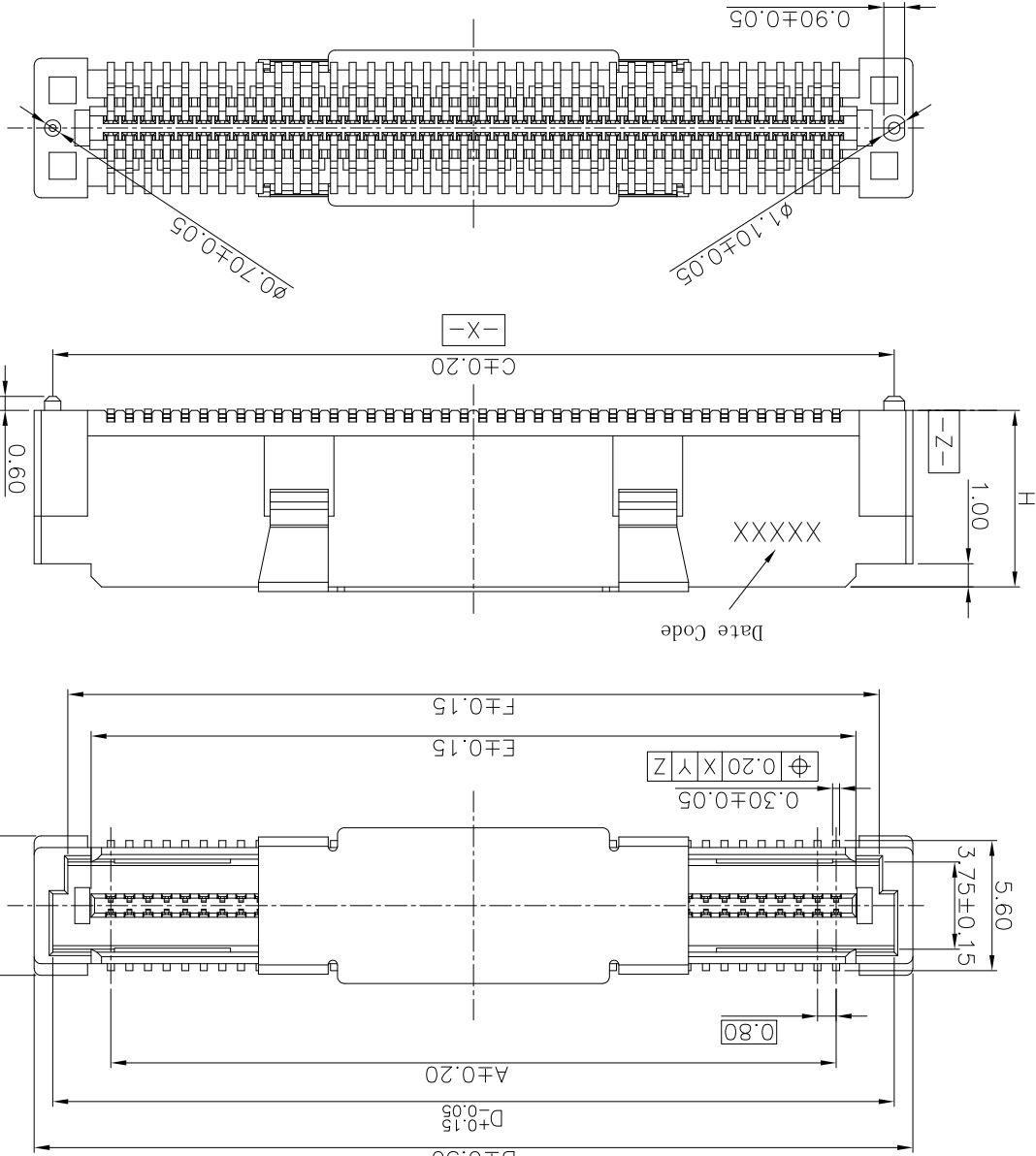
X.XXX	±1°	X.XX°	±1°
X.XX	±2°	X.X°	±2°
X.X	±3°	X.°	±3°

SCALE	1:1
UNIT	mm
SIZE	A4

ORIGINAL DRAWN:	Xu Peiguang	DATE	2018.03.29
CHECK:	Xie Yong	DATE	2018.03.29
APPROVE:	Ady Zhou	DATE	2018.03.29

DWG. NO.	600-0000-0232
PARTS NO. (INTENDED USE)	BA41-XXXT-XX-XXH

REV.	2	TITLE	BA41 CUSTOMER DRAWING
SHEET	1/2		



- NOTES: (UNLESS OTHERWISE SPECIFIED)
1. DIMENSION SHALL BE INTERPRETED PER ANSI Y14.5M-1994.
 2. MATERIAL: HOUSING MATERIAL: HIGH TEMPERATURE PLASTICS. CONTACT MATERIAL: COPPER ALLOY. VACUUM COVER MATERIAL: STAINLESS STEEL.
 3. ELECTRICAL SPECIFICATION: CONTACT RESISTANCE: 50 m ohms Max(Initial). INSULATION RESISTANCE: 100M ohms Min. CURRENT RATING: 0.5A. DIELECTRIC WITHSTANDING VOLTAGE: 500V AC rms./minute.
 4. MECHANICAL SPECIFICATION: DURABILITY: 30 CYCLES. INSERTION FORCE: 150gf Max. PER PIN. WITHDRAWAL FORCE: 25gf Min. PER PIN.
 5. PRODUCT NUMBER MATRIX: B A 4 1-XX X T-X X -X H X

Definition	Code
Matte Tin plated	A
Bright Tin plated	V
① Gold plated over all	
Flash B	1u" R 3u" C
Flash D	10u" E 15u" F
Flash G	25u" H 30u" J
② Duplex plated	
Flash K	1u" S 3u" L
Flash M	10u" N 15u" P
Flash Q	25u" T 30u" U
③ All plated its lead free.	

Definition	Code
Plating	
H: Halogen Free	
Q: HOT SEALING REEL+MPAD	
K: REEL	
B: REEL+MPAD	
Packing:	
RTB	
Series code	
0.80 Pitch	
Plug	
Pin No.	
40:80:40:80PIN	
A0:100PIN ; G0:160PIN	
C0:120PIN ; I0:180PIN	
E0:140PIN ; K0:200PIN	
Height	
A: H=4.60mm	
B: H=5.60mm	
C: H=7.60mm	
Soldering Type	
T: SMT	
0: Without Chamfer	
1: With Chamfer	
Housing Color	
Null: Nature	
B: Black	

REV.	ECN Number	Description	Drawn
1	CS17100003	RELEASE	XPG_2017.10.10
②	E18030025	CHANGE PART NUMBER	XPG_2018.03.29



Shenzhen Shekton Weiting Electronics Co., Ltd.

TOLERANCE UNLESS OTHERWISE SPECIFIED

X.XXX	±1.0
X.XX	±2.0
X.X	±3.0
X.XX°	±2.0
X.X°	±3.0

SCALE	1:1
UNIT	mm
SIZE	A4

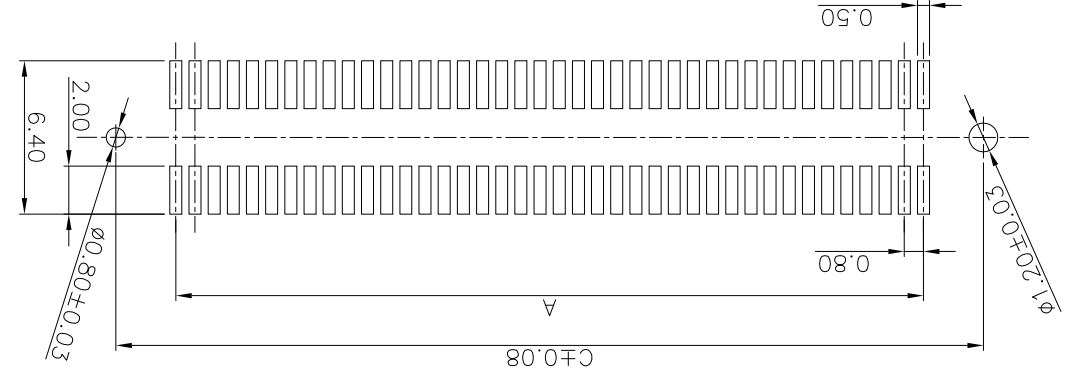
ORIGINAL DRAWN:	Xu Peiguang
CHECK:	Xie Yong
APPROVE:	Ady Zhou

DATE	2018.03.29
DATE	2018.03.29
DATE	2018.03.29

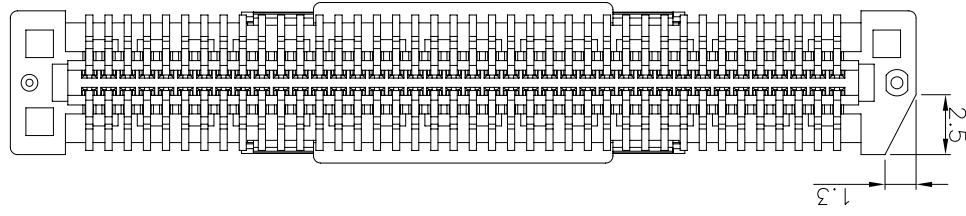
DWG. NO.	600-0000-0232
PARTS NO. (INTENDED USE)	BA41-XXXT-XX-XHX

REV.	2
SHEET	2/2

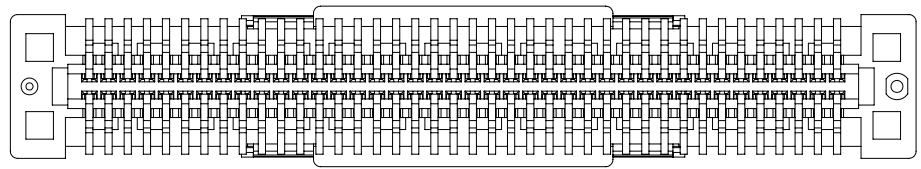
RECOMMENDED PCB LAYOUT
TOLERANCE ±0.05



BA41-XXXXT-IX-XHX



BA41-XXXXT-0X-XHX



PRODUCT NUMBER MATRIX: BA41-XX X T-X X -X H X
0: Without Chamfer
1: With Chamfer

CTK	DIM.A	DIM.B	DIM.C	DIM.D	DIM.E	DIM.F	DIM.G
40	15.20	21.80	20.20	20.20	16.90	18.90	
50	19.20	25.80	24.20	24.20	20.90	22.90	
60	23.20	29.80	28.20	28.20	24.90	26.90	
80	31.20	37.80	36.20	36.20	32.90	34.90	
100	39.20	45.80	44.20	44.20	40.90	42.90	
120	47.20	53.80	52.20	52.20	48.90	50.90	
140	55.20	61.80	60.20	60.20	56.90	58.90	
160	63.20	69.80	68.20	68.20	64.90	66.90	
180	71.20	77.80	76.20	76.20	72.90	74.90	
200	79.20	85.80	84.20	84.20	80.90	82.90	

OLD AND PART NO. COMPARISON	
NEW	OLD
BA41-80CT-1-NHB	AB41-80NB-1-001
BA41-80CT-0-NHB	ZIW-80S6-N-1-B
BA41-80CT-0-NHB	AB41-80NB-H-001
BA41-40BT-0-NHB	ZIW-40S8-VN-1-B
BA41-40BT-0-NHB	ZIW-40S8-N-1-B
BA41-60BT-0-NHB	AB41-60NB-H-003
BA41-60BT-0-NHB	ZIW-60S8-VN-1-B
BA41-60BT-0-NHB	AB41-60NB-0-003
BA41-A0BT-0-NHB	ZIW-A0S8-VN-1-B
BA41-A0BT-0-NHB	AB41-A0NB-H-003
BA41-80BT-1-NHB	ZIW-80S8-N-1-B-S01
BA41-80AT-1-NHB	AB41-80NB-H-004
BA41-80AT-1-NHB	AB41-80NB-1-004



X-ON Electronics

Largest Supplier of Electrical and Electronic Components

Click to view similar products for [Board to Board & Mezzanine Connectors](#) category:

Click to view products by [STWXE](#) manufacturer:

Other Similar products are found below :

[10135583-642402LF](#) [89885-310LF](#) [589158040000018](#) [6-1393048-0](#) [68683-613](#) [MDF7-12DP-2.54DSA](#) [MDF7-18P-2.54DSA\(01\)](#) [MDF7-20DP-2.54DSA](#) [MDF7-26D-2.54DSA\(55\)](#) [MDF7-3P-2.54DSA\(01\)](#) [MDF7B-20P-2.54DSA\(01\)](#) [MDF7B-3P-2.54DSA\(55\)](#) [MDF7C-11P-2.54DSA\(55\)](#) [MDF7C-18P-2.54DSA\(55\)](#) [MDF7C-5P-2.54DSA\(01\)](#) [MDF7P-5P-2.54DSA\(55\)](#) [75234-0516](#) [FCN-230C068-11](#) [FCN-268F012-G/BD](#) [FCN-268F036-G/BD](#) [FCN-268M012-G/0D](#) [FCN-268M024-G/1D](#) [FCN-360C008-C](#) [FCN-360C040-C](#) [FCN-723J004/1](#) [MIS-048-01-F-D-DP-K](#) [832-10-034-10-001000](#) [93696-325LF](#) [11828-1FA](#) [AXK630345P](#) [18097-0013](#) [ICA-328STT](#) [2007042-2](#) [304400-2](#) [FCN-214Q030-G/0](#) [FCN-215Q040-G/0](#) [FCN-230C068-ESA](#) [FCN-234P048-G/0](#) [FCN-235D050-G/C](#) [FCN-360A3](#) [FCN-360C040-B](#) [210-93-314-41-105000](#) [2-22603-0](#) [379-064-521-202](#) [MDF7-12P-2.54DSA\(01\)](#) [MDF7-16P-2.54DS\(56\)](#) [MDF7-40DP-2.54DSA\(55\)](#) [MDF7-8P-2.54DSA\(55\)](#) [MDF7B-16P-2.54DSA\(55\)](#) [AXG720047](#)