



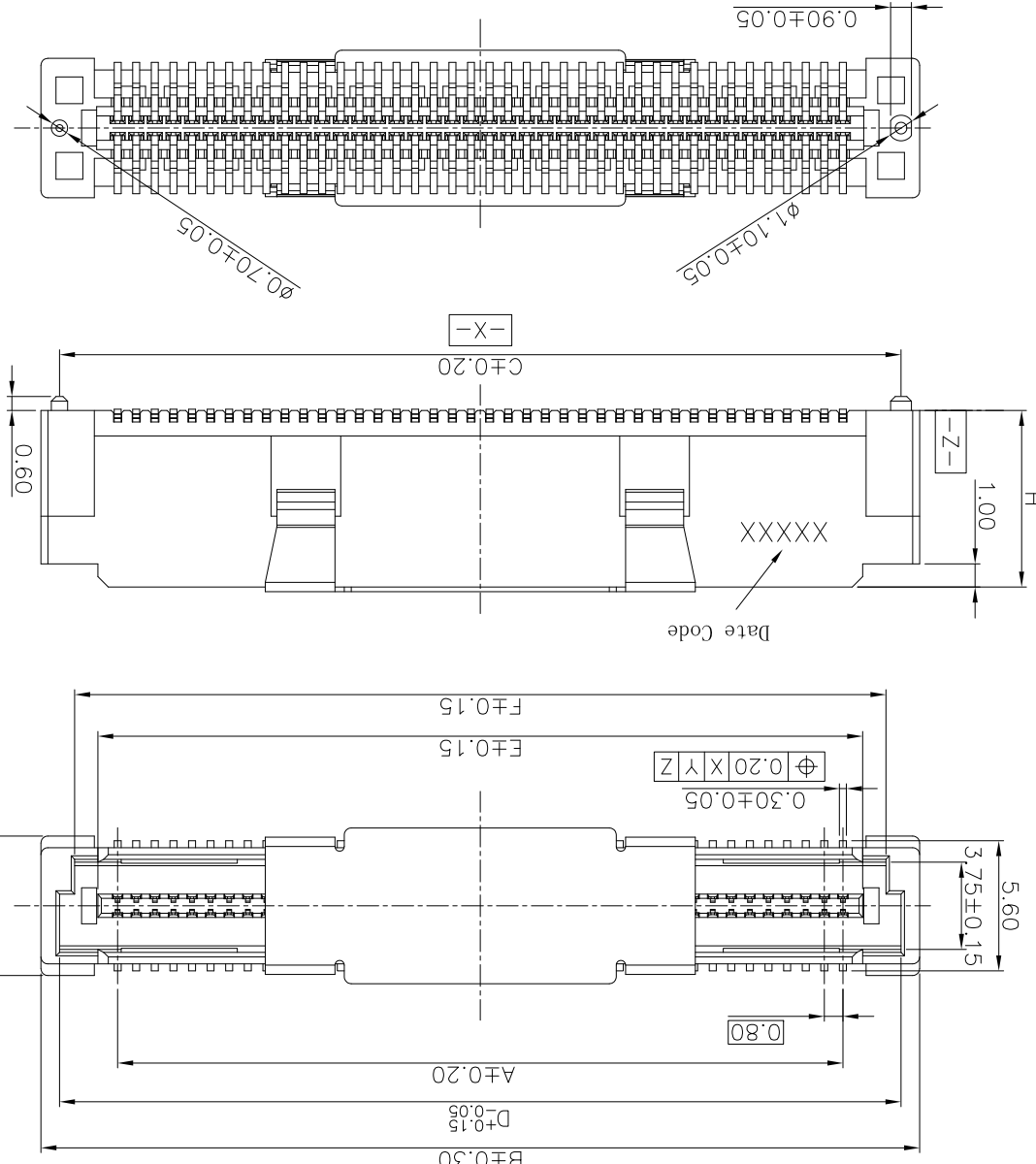
| | | | |
|-------|-----|-------|-----|
| X.XXX | ±1° | X.XX° | ±1° |
| X.XX | ±2° | X.X° | ±2° |
| X.X | ±3° | X.° | ±3° |

| | |
|------|----|
| SIZE | A4 |
| UNIT | mm |

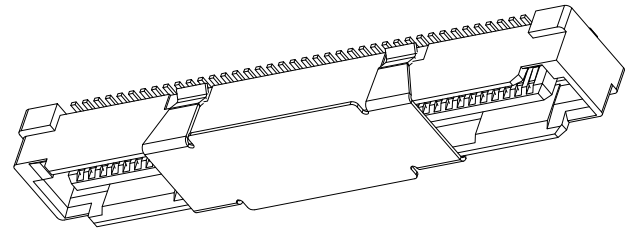
| | |
|-------|------------|
| SCALE | 1:1 |
| DATE | 2018.03.29 |
| DATE | 2018.03.29 |
| DATE | 2018.03.29 |

| | |
|-----------------|-------------|
| APPROVE: | Ady Zhou |
| CHECK: | Xie Yong |
| ORIGINAL DRAWN: | Xu Peiguang |

| | |
|-------|-----|
| REV. | 2 |
| SHEET | 1/2 |



Notes: (UNLESS OTHERWISE SPECIFIED)
 1. DIMENSION SHALL BE INTERPRETED PER ANSI Y14.5M-1994.
 2. MATERIAL:
 HOUSING MATERIAL: HIGH TEMPERATURE PLASTICS.
 CONTACT MATERIAL: COPPER ALLOY,
 VACUUM COVER MATERIAL: STAINLESS STEEL.
 ELECTRICAL SPECIFICATION:
 CONTACT RESISTANCE: 50 m ohms Max(Initial).
 INSULATION RESISTANCE: 100M ohms Min.
 CURRENT RATING: 0.5A.
 DIELECTRIC WITHSTANDING VOLTAGE: 500V AC rms./minute
 DURABILITY: 30 CYCLES.
 INSERTION FORCE: 150gf Max. PER PIN.
 WITHDRAWAL FORCE: 25gf Min. PER PIN.
 3. PRODUCT NUMBER MATRIX:
 B A 4 I-XX X T-X X -X H X
 RTB
 Series code
 0.80 Pitch
 Plug
 PIN No.
 40*80:40*80PIN
 A0:100PIN ; G0:160PIN
 C0:120PIN ; I0:180PIN
 E0:140PIN ; K0:200PIN
 Height
 A: H=4.60mm
 B: H=5.60mm
 C: H=7.60mm
 Soldering Type
 T:SMT
 0:Without Chamfer
 1:With Chamfer
 Housing Color
 Null:Nature
 B:Black
 Plating
 H:Halogen Free
 K:REEL
 Q:HOT SEALING REEL+MPAD
 B:REEL+MPAD
 Packing:
 A: Matte Tin plated
 V: Bright Tin plated
 Code
 Definition
 A
 V
 ◎ gold plated over all
 Flash B 1u" R 3u" C
 5u" D 10u" E 15u" F
 20u" G 25u" H 30u" J
 ◎ duplex plated
 Flash K 1u" S 3u" L
 5u" M 10u" N 15u" P
 20u" Q 25u" T 30u" U
 ◎ All plated its lead free.



| | | | |
|------|------------|--------------------|----------------|
| REV. | ECN Number | Description | Drawn |
| 1 | CS17100003 | RELEASE | XPG_2017.10.10 |
| 2 | E18030025 | CHANGE PART NUMBER | XPG_2018.03.29 |

| | |
|-------|-----|
| REV. | 2 |
| SHEET | 1/2 |

| | |
|----------|-----------------------|
| DWG. NO. | 600-0000-0232 |
| TITLE | BA41 CUSTOMER DRAWING |

| | |
|--------------------------|------------------|
| PARTS NO. (INTENDED USE) | BA41-XXXT-XX-XHX |
|--------------------------|------------------|



Shenzhen Shentai Weitang Electronics Co., Ltd.

TOLERANCE UNLESS OTHERWISE SPECIFIED

| | |
|-------|------|
| X.XXX | ±1.0 |
| X.XX | ±2.0 |
| X.X | ±3.0 |
| X.XX° | ±2.0 |
| X.X° | ±3.0 |

| | |
|-------|-----|
| SCALE | 1:1 |
| UNIT | mm |
| SIZE | A4 |

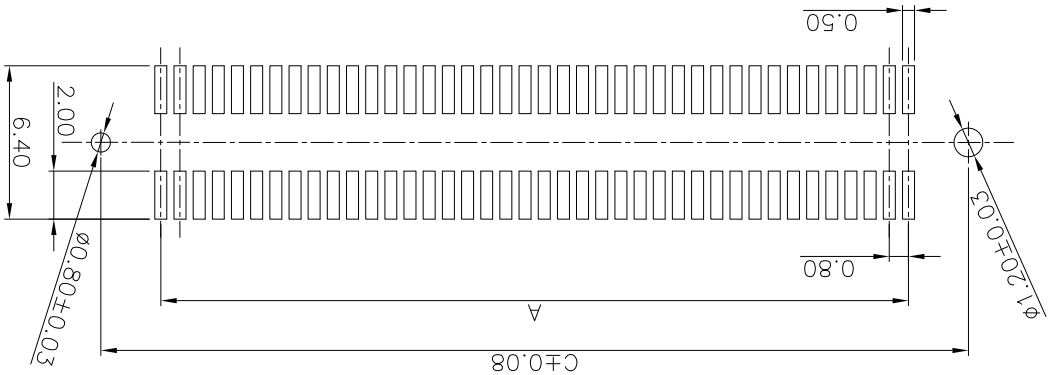
| | |
|-----------------|-------------|
| ORIGINAL DRAWN: | Xu Peiguang |
| CHECK: | Xie Yong |
| APPROVE: | Ady Zhou |

| | |
|------|------------|
| DATE | 2018.03.29 |
| DATE | 2018.03.29 |
| DATE | 2018.03.29 |

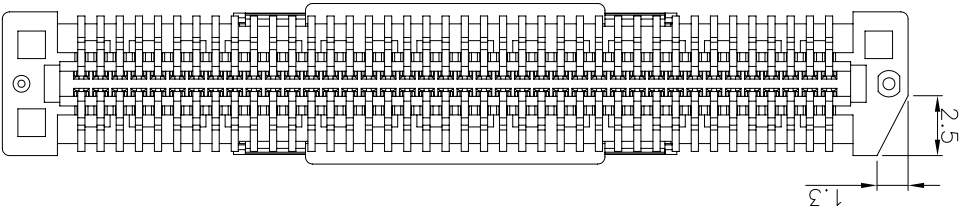
| | |
|--------------------------|------------------|
| DWG. NO. | 600-0000-0232 |
| PARTS NO. (INTENDED USE) | BA41-XXXT-XX-XHX |

| | |
|-----------------------|-----|
| REV. | 2 |
| SHEET | 2/2 |
| TITLE | |
| BA41 CUSTOMER DRAWING | |

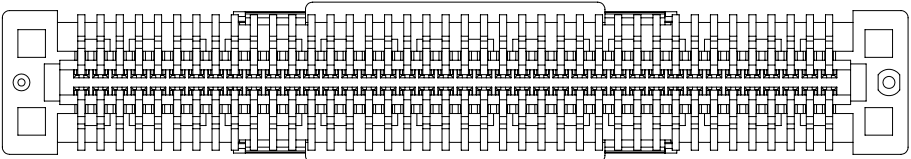
RECOMMENDED PCB LAYOUT
TOLERANCE ±0.05



BA41-XXXXT-IX-XHX



BA41-XXXXT-0X-XHX



PRODUCT NUMBER MATRIX: BA41-XX X T-X X -X H X
0: Without Chamfer
1: With Chamfer

| | |
|-----------------------------|--------------------|
| OLD AND PART NO. COMPARISON | |
| NEW | OLD |
| BA41-80CT-1-NHB | AB41-80NB-1-001 |
| BA41-80CT-0-NHB | ZIW-80S6-N-1-B |
| | AB41-80NB-0-001 |
| BA41-40BT-0-NHB | AB41-80NB-H-001 |
| | ZIW-40S8-VN-1-B |
| | ZIW-40S8-N-1-B |
| BA41-60BT-0-NHB | AB41-40NB-H-003 |
| | ZIW-60S8-VN-1-B |
| | AB41-60NB-0-003 |
| BA41-A0BT-0-NHB | ZIW-A0S8-VN-1-B |
| | AB41-A0NB-0-003 |
| | AB41-A0NB-H-003 |
| BA41-80BT-1-NHB | ZIW-80S8-N-1-B-S01 |
| | AB41-80NB-H-004 |
| BA41-80AT-1-NHB | AB41-80NB-1-004 |

| | | | | | | | |
|----|-----|-------|-------|-------|-------|-------|-------|
| CT | 40 | 15.20 | 21.80 | 20.20 | 20.20 | 16.90 | 18.90 |
| CT | 50 | 19.20 | 25.80 | 24.20 | 20.90 | 22.90 | 26.90 |
| CT | 60 | 23.20 | 29.80 | 28.20 | 24.90 | 26.90 | 34.90 |
| CT | 80 | 31.20 | 37.80 | 36.20 | 32.90 | 34.90 | 42.90 |
| CT | 100 | 39.20 | 45.80 | 44.20 | 40.90 | 42.90 | 50.90 |
| CT | 120 | 47.20 | 53.80 | 52.20 | 48.90 | 50.90 | 58.90 |
| CT | 140 | 55.20 | 61.80 | 60.20 | 56.90 | 58.90 | 66.90 |
| CT | 160 | 63.20 | 69.80 | 68.20 | 64.90 | 66.90 | 74.90 |
| CT | 180 | 71.20 | 77.80 | 76.20 | 72.90 | 74.90 | 82.90 |
| CT | 200 | 79.20 | 85.80 | 84.20 | 80.90 | 82.90 | |

②

X-ON Electronics

Largest Supplier of Electrical and Electronic Components

Click to view similar products for [Board to Board & Mezzanine Connectors](#) category:

Click to view products by [STWXE](#) manufacturer:

Other Similar products are found below :

[10135583-642402LF](#) [89885-310LF](#) [589158040000018](#) [6-1393048-0](#) [68683-613](#) [MDF7-12DP-2.54DSA](#) [MDF7-18P-2.54DSA\(01\)](#) [MDF7-20DP-2.54DSA](#) [MDF7-26D-2.54DSA\(55\)](#) [MDF7-3P-2.54DSA\(01\)](#) [MDF7B-20P-2.54DSA\(01\)](#) [MDF7B-3P-2.54DSA\(55\)](#) [MDF7C-11P-2.54DSA\(55\)](#) [MDF7C-18P-2.54DSA\(55\)](#) [MDF7C-5P-2.54DSA\(01\)](#) [MDF7P-5P-2.54DSA\(55\)](#) [75234-0516](#) [FCN-230C068-11](#) [FCN-268F012-G/BD](#) [FCN-268F036-G/BD](#) [FCN-268M012-G/0D](#) [FCN-268M024-G/1D](#) [FCN-360C008-C](#) [FCN-360C040-C](#) [FCN-723J004/1](#) [MIS-048-01-F-D-DP-K](#) [832-10-034-10-001000](#) [93696-325LF](#) [11828-1FA](#) [AXK630345P](#) [18097-0013](#) [ICA-328STT](#) [2007042-2](#) [304400-2](#) [FCN-214Q030-G/0](#) [FCN-215Q040-G/0](#) [FCN-230C068-ESA](#) [FCN-234P048-G/0](#) [FCN-235D050-G/C](#) [FCN-360A3](#) [FCN-360C040-B](#) [210-93-314-41-105000](#) [2-22603-0](#) [379-064-521-202](#) [MDF7-12P-2.54DSA\(01\)](#) [MDF7-16P-2.54DS\(56\)](#) [MDF7-40DP-2.54DSA\(55\)](#) [MDF7-8P-2.54DSA\(55\)](#) [MDF7B-16P-2.54DSA\(55\)](#) [AXG720047](#)