

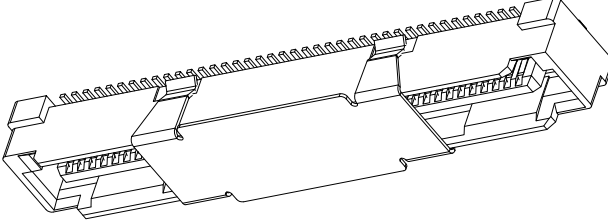
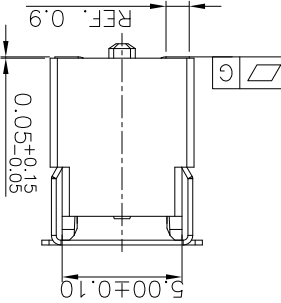
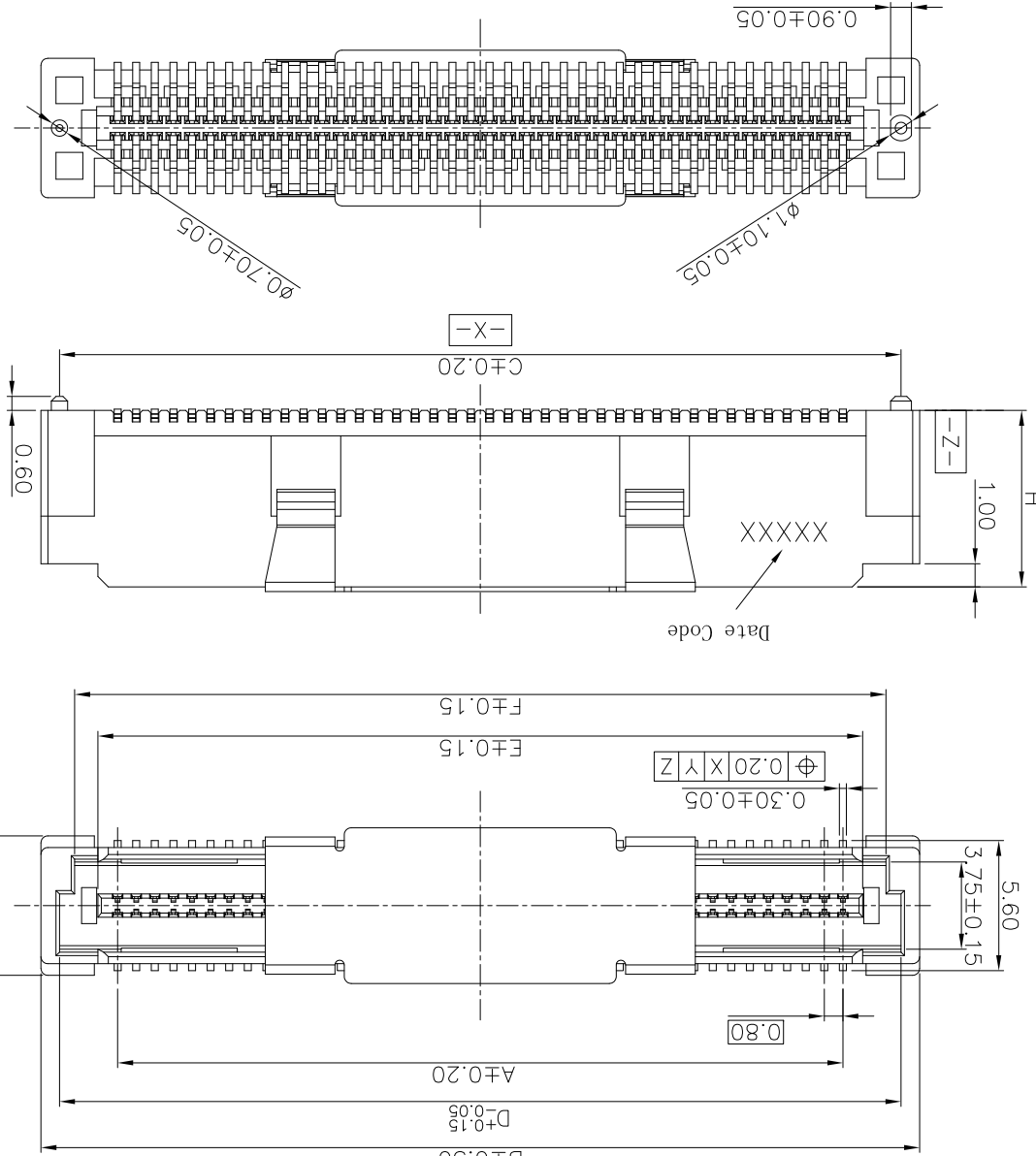


X.XXX	±1°	X.XX°	±1°
X.XX	±2°	X.X°	±2°
X.X	±3°	X.°	±3°

SIZE	A4
UNIT	mm

DATE	2018.03.29	DATE	2018.03.29	DATE	2018.03.29
ORIGINAL DRAWN:	Xu Peiguang	CHECK:	Xie Yong	APPROVE:	Ady Zhou

REV.	2	TITLE	BA41 CUSTOMER DRAWING
SHEET	1/2	DWG. NO.	600-0000-0232
		PARTS NO. (INTENDED USE)	BA41-XXXT-XX-XXH



- NOTES: (UNLESS OTHERWISE SPECIFIED)
1. DIMENSION SHALL BE INTERPRETED PER ANSI Y14.5M-1994.
  2. MATERIAL:  
HOUSING MATERIAL: HIGH TEMPERATURE PLASTICS.  
CONTACT MATERIAL: COPPER ALLOY,  
VACUUM COVER MATERIAL: STAINLESS STEEL.
  3. ELECTRICAL SPECIFICATION:  
CONTACT RESISTANCE: 50 m ohms Max(Initial).  
INSULATION RESISTANCE: 100M ohms Min.  
CURRENT RATING: 0.5A.  
DIELECTRIC WITHSTANDING VOLTAGE: 500V AC rms./minute
  4. MECHANICAL SPECIFICATION:  
DURABILITY: 30 CYCLES.  
INSERTION FORCE: 150gf Max. PER PIN.  
WITHDRAWAL FORCE: 25gf Min. PER PIN.
  5. PRODUCT NUMBER MATRIX:  
B A 4 1-XX X T-X X -X H X

RTB

Series code

Plug

Pin No.

40°80:40°80PIN

A0:100PIN ; G0:160PIN

C0:120PIN ; I0:180PIN

E0:140PIN ; K0:200PIN

Height

A: H=4.60mm

B: H=5.60mm

C: H=7.60mm

Soldering Type

T: SMT

0: Without Chamfer

1: With Chamfer

Housing Color

Null: Nature

B: Black

Code	Definition
A	Matte Tin plated
V	Bright Tin plated
◎ gold plated over all	
C	Flash B 1u" R 3u" C
F	5u" D 10u" E 15u" F
J	20u" G 25u" H 30u" J
◎ duplex plated	
L	Flash K 1u" S 3u" L
P	5u" M 10u" N 15u" P
U	20u" Q 25u" T 30u" U
◎ All plated its lead free.	

Packing:

B: REEL+MPAD

K: REEL

Q: HOT SEALING REEL+MPAD

H: Halogen Free

Plating

REV.	ECN Number	Description	Drawn
1	CS17100003	RELEASE	XPg_2017.10.10
②	E18030025	CHANGE PART NUMBER	XPg_2018.03.29



Shenzhen Shentai Weitang Electronics Co., Ltd.

X. XXX	±1.	X. XX°	±1.
X. XX	±2.	X. X°	±2.
X. X	±3.	X. °	±3.

TOLERANCE UNLESS OTHERWISE SPECIFIED

SCALE	1 : 1
UNIT	mm
SIZE	A4

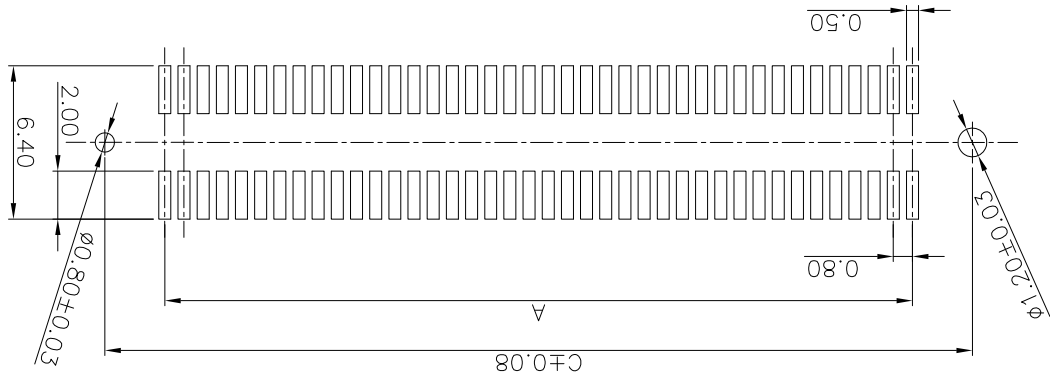
ORIGINAL DRAWN:	Xu Peiguang
CHECK:	Xie Yong
APPROVE:	Ady Zhou

DATE	2018.03.29
DATE	2018.03.29
DATE	2018.03.29

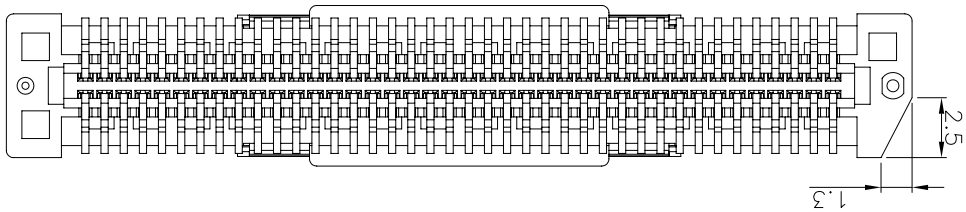
DWG. NO.	600-0000-0232
PARTS NO. (INTENDED USE)	BA41-XXXT-XX-XHX

REV.	2
SHEET	2/2

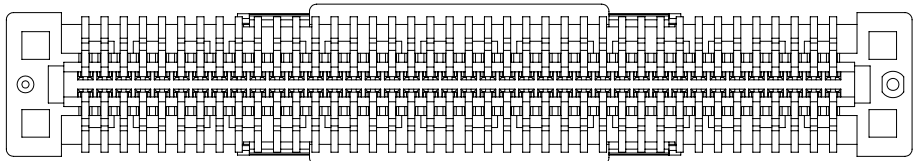
RECOMMENDED PCB LAYOUT  
TOLERANCE ±0.05



BA41-XXXXT-IX-XHX



BA41-XXXXT-0X-XHX



PRODUCT NUMBER MATRIX: BA41-XX X T-X X -X H X  
0: Without Chamfer  
1: With Chamfer

OLD AND PART NO. COMPARISON	
NEW	OLD
BA41-80CT-1-NHB	AB41-80NB-1-001
BA41-80CT-0-NHB	ZIW-80S6-N-1-B
	AB41-80NB-0-001
BA41-40BT-0-NHB	AB41-80NB-H-001
	ZIW-40S8-VN-1-B
	ZIW-40S8-N-1-B
BA41-60BT-0-NHB	AB41-40NB-H-003
	ZIW-60S8-VN-1-B
	AB41-60NB-0-003
BA41-A0BT-0-NHB	ZIW-A0S8-VN-1-B
	AB41-A0NB-0-003
	AB41-A0NB-H-003
BA41-80BT-1-NHB	ZIW-80S8-N-1-B-S01
	AB41-80NB-H-004
BA41-80AT-1-NHB	AB41-80NB-1-004

CT	40	15.20	21.80	20.20	20.20	16.90	18.90
CT	50	19.20	25.80	24.20	20.90	22.90	26.90
CT	60	23.20	29.80	28.20	24.90	26.90	34.90
CT	80	31.20	37.80	36.20	32.90	34.90	42.90
CT	100	39.20	45.80	44.20	40.90	42.90	50.90
CT	120	47.20	53.80	52.20	48.90	50.90	58.90
CT	140	55.20	61.80	60.20	56.90	58.90	66.90
CT	160	63.20	69.80	68.20	64.90	66.90	74.90
CT	180	71.20	77.80	76.20	72.90	74.90	82.90
CT	200	79.20	85.80	84.20	80.90	82.90	



## X-ON Electronics

Largest Supplier of Electrical and Electronic Components

*Click to view similar products for [Board to Board & Mezzanine Connectors](#) category:*

*Click to view products by [STWXE](#) manufacturer:*

Other Similar products are found below :

[10135583-642402LF](#) [89885-310LF](#) [589158040000018](#) [6-1393048-0](#) [68683-613](#) [MDF7-12DP-2.54DSA](#) [MDF7-18P-2.54DSA\(01\)](#) [MDF7-20DP-2.54DSA](#) [MDF7-26D-2.54DSA\(55\)](#) [MDF7-3P-2.54DSA\(01\)](#) [MDF7B-20P-2.54DSA\(01\)](#) [MDF7B-3P-2.54DSA\(55\)](#) [MDF7C-11P-2.54DSA\(55\)](#) [MDF7C-18P-2.54DSA\(55\)](#) [MDF7C-5P-2.54DSA\(01\)](#) [MDF7P-5P-2.54DSA\(55\)](#) [75234-0516](#) [FCN-230C068-11](#) [FCN-268F012-G/BD](#) [FCN-268F036-G/BD](#) [FCN-268M012-G/0D](#) [FCN-268M024-G/1D](#) [FCN-360C008-C](#) [FCN-360C040-C](#) [FCN-723J004/1](#) [MIS-048-01-F-D-DP-K](#) [832-10-034-10-001000](#) [93696-325LF](#) [11828-1FA](#) [AXK630345P](#) [18097-0013](#) [ICA-328STT](#) [2007042-2](#) [304400-2](#) [FCN-214Q030-G/0](#) [FCN-215Q040-G/0](#) [FCN-230C068-ESA](#) [FCN-234P048-G/0](#) [FCN-235D050-G/C](#) [FCN-360A3](#) [FCN-360C040-B](#) [210-93-314-41-105000](#) [2-22603-0](#) [379-064-521-202](#) [MDF7-12P-2.54DSA\(01\)](#) [MDF7-16P-2.54DS\(56\)](#) [MDF7-40DP-2.54DSA\(55\)](#) [MDF7-8P-2.54DSA\(55\)](#) [MDF7B-16P-2.54DSA\(55\)](#) [AXG720047](#)