



Shenzhen Shekton Weikang Electronics Co., Ltd.

TOLERANCE UNLESS OTHERWISE SPECIFIED

X.XXX	±1.0	X.XX°	±1.0
X.XX	±2.0	X.X°	±2.0
X.X	±3.0	X.°	±3.0

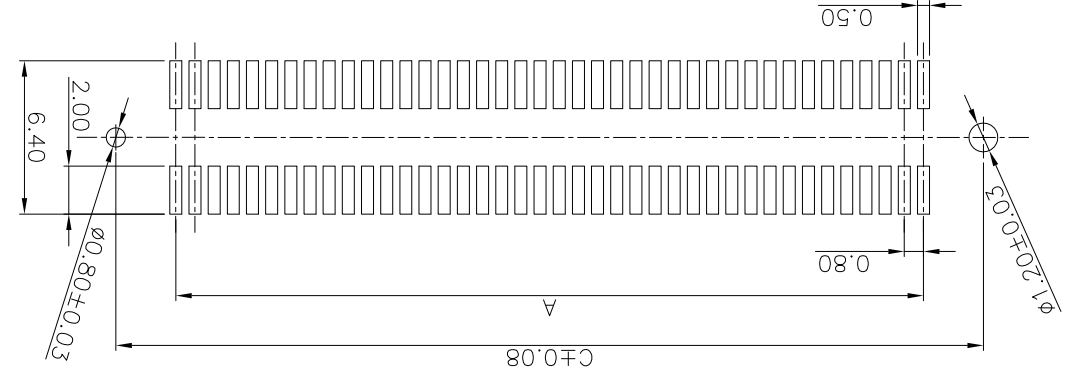
SCALE	1:1
UNIT	mm
SIZE	A4

DATE	2018.03.29	DATE	2018.03.29
DATE	2018.03.29	DATE	2018.03.29
DATE	2018.03.29	DATE	2018.03.29

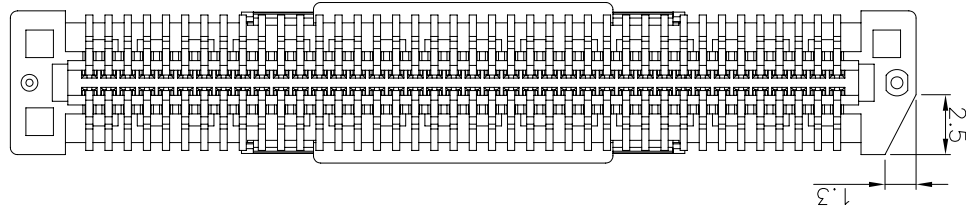
APPROVE:	Ady Zhou	PARTS NO. (INTENDED USE)	BA41-XXXT-XX-XHX
CHECK:	Xie Yong	DWG. NO.	600-0000-0232
ORIGINAL DRAWN:	Xu Peiguang	TITLE	BA41 CUSTOMER DRAWING

REV.	2	SHEET	2/2
------	---	-------	-----

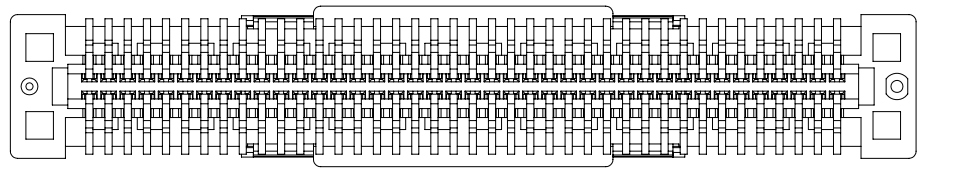
RECOMMENDED PCB LAYOUT
TOLERANCE ±0.05



BA41-XXXXT-IX-XHX



BA41-XXXXT-0X-XHX



PRODUCT NUMBER MATRIX: BA41-XX X T-X X -X H X
0: Without Chamfer
1: With Chamfer

OLD AND PART NO. COMPARISON	
NEW	OLD
BA41-80CT-1-NHB	AB41-80NB-1-001
BA41-80CT-0-NHB	ZIW-80S6-N-1-B
BA41-80CT-0-NHB	AB41-80NB-H-001
BA41-40BT-0-NHB	ZIW-40S8-VN-1-B
BA41-40BT-0-NHB	ZIW-40S8-N-1-B
BA41-60BT-0-NHB	AB41-60NB-H-003
BA41-60BT-0-NHB	ZIW-60S8-VN-1-B
BA41-60BT-0-NHB	AB41-60NB-0-003
BA41-A0BT-0-NHB	ZIW-A0S8-VN-1-B
BA41-A0BT-0-NHB	AB41-A0NB-H-003
BA41-80BT-1-NHB	ZIW-80S8-N-1-B-S01
BA41-80AT-1-NHB	AB41-80NB-H-004
BA41-80AT-1-NHB	AB41-80NB-1-004

CT	40	50	60	80	100	120	140	160	180	200
DIM.A	15.20	19.20	23.20	31.20	39.20	47.20	55.20	63.20	71.20	79.20
DIM.B	21.80	25.80	29.80	37.80	45.80	53.80	61.80	69.80	77.80	85.80
DIM.C	20.20	24.20	28.20	36.20	44.20	52.20	60.20	68.20	76.20	84.20
DIM.D	20.20	24.20	28.20	36.20	44.20	52.20	60.20	68.20	76.20	84.20
DIM.E	16.90	20.90	24.90	32.90	40.90	48.90	56.90	64.90	72.90	80.90
DIM.F	18.90	22.90	26.90	34.90	42.90	50.90	58.90	66.90	74.90	82.90

X-ON Electronics

Largest Supplier of Electrical and Electronic Components

Click to view similar products for [Board to Board & Mezzanine Connectors](#) category:

Click to view products by [STWXE](#) manufacturer:

Other Similar products are found below :

[10135583-642402LF](#) [89885-310LF](#) [589158040000018](#) [6-1393048-0](#) [68683-613](#) [MDF7-12DP-2.54DSA](#) [MDF7-18P-2.54DSA\(01\)](#) [MDF7-20DP-2.54DSA](#) [MDF7-26D-2.54DSA\(55\)](#) [MDF7-3P-2.54DSA\(01\)](#) [MDF7B-20P-2.54DSA\(01\)](#) [MDF7B-3P-2.54DSA\(55\)](#) [MDF7C-11P-2.54DSA\(55\)](#) [MDF7C-18P-2.54DSA\(55\)](#) [MDF7C-5P-2.54DSA\(01\)](#) [MDF7P-5P-2.54DSA\(55\)](#) [75234-0516](#) [FCN-230C068-11](#) [FCN-268F012-G/BD](#) [FCN-268F036-G/BD](#) [FCN-268M012-G/0D](#) [FCN-268M024-G/1D](#) [FCN-360C008-C](#) [FCN-360C040-C](#) [FCN-723J004/1](#) [MIS-048-01-F-D-DP-K](#) [832-10-034-10-001000](#) [93696-325LF](#) [11828-1FA](#) [AXK630345P](#) [18097-0013](#) [ICA-328STT](#) [2007042-2](#) [304400-2](#) [FCN-214Q030-G/0](#) [FCN-215Q040-G/0](#) [FCN-230C068-ESA](#) [FCN-234P048-G/0](#) [FCN-235D050-G/C](#) [FCN-360A3](#) [FCN-360C040-B](#) [210-93-314-41-105000](#) [2-22603-0](#) [379-064-521-202](#) [MDF7-12P-2.54DSA\(01\)](#) [MDF7-16P-2.54DS\(56\)](#) [MDF7-40DP-2.54DSA\(55\)](#) [MDF7-8P-2.54DSA\(55\)](#) [MDF7B-16P-2.54DSA\(55\)](#) [AXG720047](#)