



Shenzhen Shentai Weifang Electronics Co., Ltd.

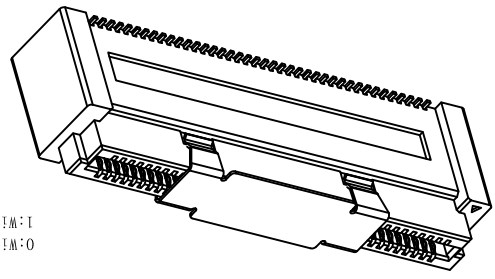
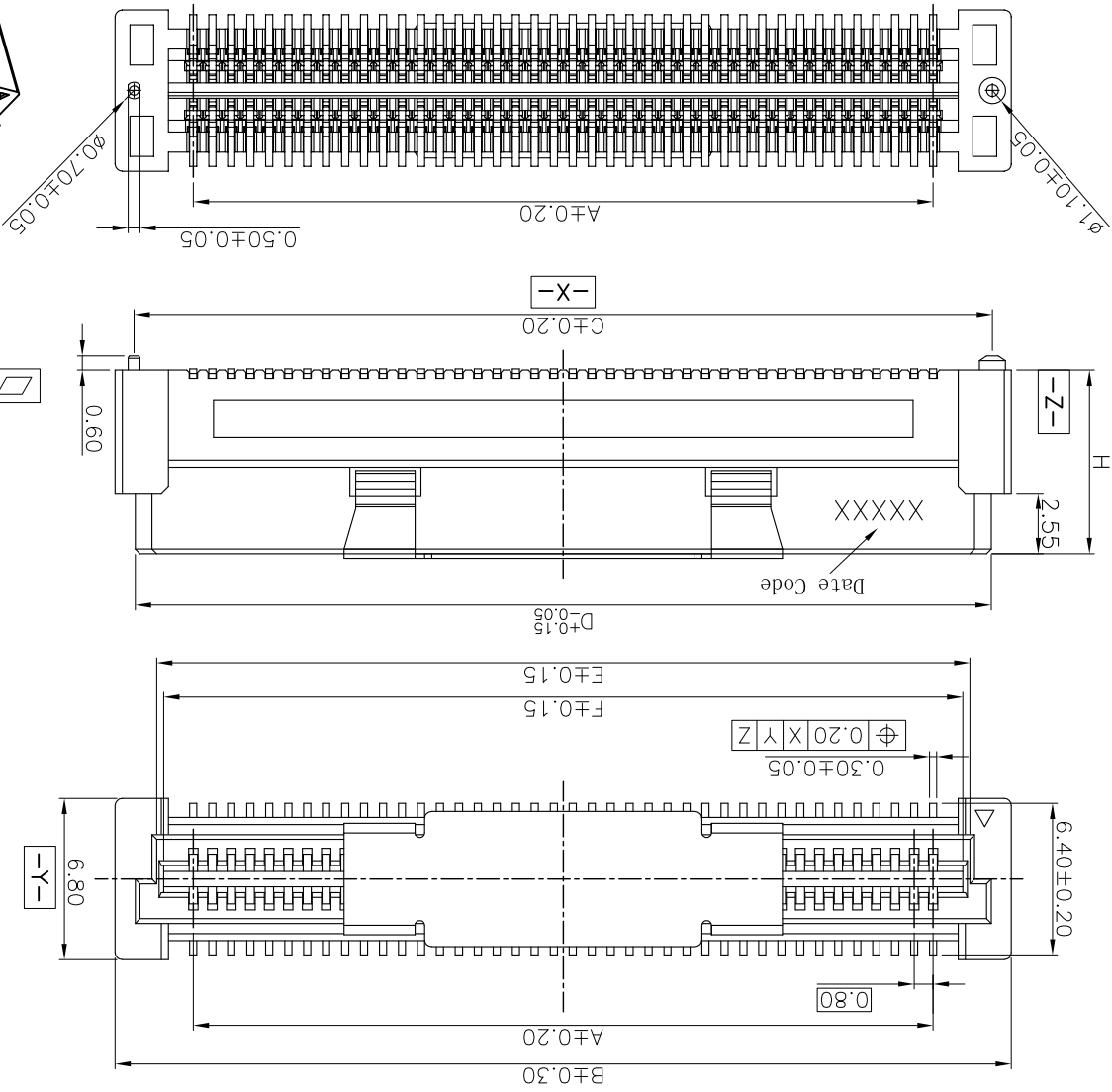
X.XXX	±1°	X.XX°	±1°
X.XX	±2°	X.X°	±2°
X.X	±3°	X°	±3°
TOLERANCE UNLESS OTHERWISE SPECIFIED			

SCALE	1:1
UNIT	mm
SIZE	A4

DATE	2018.03.26	DATE	2018.03.26
DATE	2018.03.26	DATE	2018.03.26
DATE	2018.03.26	DATE	2018.03.26
APPROVE:	Ady Zhou	CHECK:	Xie Yong
ORIGINAL DRAWN:	Xu Peiguang		

DWG. NO.	600-0000-0223
PARTS NO. (INTENDED USE)	BA42-XXXT-XX-XHX
TITLE	BA42 CUSTOMER DRAWING

REV.	2
SHEET	1/3



BTB	Series code	B A 4 2-XX X 1-X X -X H X
Receptacle	0.80 Pitch	
PN No.	40:80:40:80PIN	
Height	E0:140PIN ; K0:200PIN	
	C0:120PIN ; G0:160PIN	
	A0:100PIN ; G0:160PIN	
	B: H=7.75mm	
	C: H=11.75mm	
Soldering Type	T: SMT	
	0: Without Chamfer	
	1: With Chamfer	
Housing Color	Null: Nature	
	B: Black	

Flash B	1u" R	3u" C
Flash D	10u" E	15u" F
Flash M	10u" N	15u" P
Flash K	1u" S	3u" L
Flash J	25u" H	30u" J
Flash G	25u" H	30u" J
Flash Q	25u" T	30u" U
Flash R	10u" V	15u" W
Flash S	10u" X	15u" Y
Flash T	10u" Z	15u" AA
Flash U	10u" AB	15u" AC
Flash V	10u" AD	15u" AE
Flash W	10u" AF	15u" AG
Flash X	10u" AH	15u" AI
Flash Y	10u" AJ	15u" AK
Flash Z	10u" AL	15u" AM
Flash AA	10u" AN	15u" AO
Flash AB	10u" AP	15u" AQ
Flash AC	10u" AR	15u" AS
Flash AD	10u" AT	15u" AU
Flash AE	10u" AV	15u" AW
Flash AF	10u" AX	15u" AY
Flash AG	10u" AZ	15u" BA
Flash AH	10u" BB	15u" BC
Flash AI	10u" BD	15u" BE
Flash AJ	10u" BF	15u" BG
Flash AK	10u" BH	15u" BI
Flash AL	10u" BJ	15u" BK
Flash AM	10u" BL	15u" BM
Flash AN	10u" BN	15u" BO
Flash AO	10u" BO	15u" BP
Flash AP	10u" BP	15u" BQ
Flash AQ	10u" BQ	15u" BR
Flash AR	10u" BR	15u" BS
Flash AS	10u" BS	15u" BT
Flash AT	10u" BT	15u" BU
Flash AU	10u" BU	15u" BV
Flash AV	10u" BV	15u" BW
Flash AW	10u" BW	15u" BX
Flash AX	10u" BX	15u" BY
Flash AY	10u" BY	15u" BZ
Flash AZ	10u" BZ	15u" CA
Flash BA	10u" CA	15u" CB
Flash BB	10u" CB	15u" CC
Flash BC	10u" CC	15u" CD
Flash BD	10u" CD	15u" CE
Flash BE	10u" CE	15u" CF
Flash BF	10u" CF	15u" CG
Flash BG	10u" CG	15u" CH
Flash BH	10u" CH	15u" CI
Flash BI	10u" CI	15u" CJ
Flash BJ	10u" CJ	15u" CK
Flash BK	10u" CK	15u" CL
Flash BL	10u" CL	15u" CM
Flash BM	10u" CM	15u" CN
Flash BN	10u" CN	15u" CO
Flash BO	10u" CO	15u" CP
Flash BP	10u" CP	15u" CQ
Flash BQ	10u" CQ	15u" CR
Flash BR	10u" CR	15u" CS
Flash BS	10u" CS	15u" CT
Flash BT	10u" CT	15u" CU
Flash BU	10u" CU	15u" CV
Flash BV	10u" CV	15u" CW
Flash BW	10u" CW	15u" CX
Flash BX	10u" CX	15u" CY
Flash BY	10u" CY	15u" CZ
Flash BZ	10u" CZ	15u" DA
Flash CA	10u" DA	15u" DB
Flash CB	10u" DB	15u" DC
Flash CC	10u" DC	15u" DD
Flash CD	10u" DD	15u" DE
Flash CE	10u" DE	15u" DF
Flash CF	10u" DF	15u" DG
Flash CG	10u" DG	15u" DH
Flash CH	10u" DH	15u" DI
Flash CI	10u" DI	15u" DJ
Flash CJ	10u" DJ	15u" DK
Flash CK	10u" DK	15u" DL
Flash CL	10u" DL	15u" DM
Flash CM	10u" DM	15u" DN
Flash CN	10u" DN	15u" DO
Flash CO	10u" DO	15u" DP
Flash CP	10u" DP	15u" DQ
Flash CQ	10u" DQ	15u" DR
Flash CR	10u" DR	15u" DS
Flash CS	10u" DS	15u" DT
Flash CT	10u" DT	15u" DU
Flash CU	10u" DU	15u" DV
Flash CV	10u" DV	15u" DW
Flash CW	10u" DW	15u" DX
Flash CX	10u" DX	15u" DY
Flash CY	10u" DY	15u" DZ
Flash CZ	10u" DZ	15u" EA
Flash DA	10u" EA	15u" EB
Flash DB	10u" EB	15u" EC
Flash DC	10u" EC	15u" ED
Flash DD	10u" ED	15u" EE
Flash DE	10u" EE	15u" EF
Flash DF	10u" EF	15u" EG
Flash DG	10u" EG	15u" EH
Flash DH	10u" EH	15u" EI
Flash DI	10u" EI	15u" EJ
Flash DJ	10u" EJ	15u" EK
Flash DK	10u" EK	15u" EL
Flash DL	10u" EL	15u" EM
Flash DM	10u" EM	15u" EN
Flash DN	10u" EN	15u" EO
Flash DO	10u" EO	15u" EP
Flash DP	10u" EP	15u" EQ
Flash DQ	10u" EQ	15u" ER
Flash DR	10u" ER	15u" ES
Flash DS	10u" ES	15u" ET
Flash DT	10u" ET	15u" EU
Flash DU	10u" EU	15u" EV
Flash DV	10u" EV	15u" EW
Flash DW	10u" EW	15u" EX
Flash DX	10u" EX	15u" EY
Flash DY	10u" EY	15u" EZ
Flash EZ	10u" EZ	15u" FA
Flash EA	10u" FA	15u" FB
Flash EB	10u" FB	15u" FC
Flash EC	10u" FC	15u" FD
Flash ED	10u" FD	15u" FE
Flash EE	10u" FE	15u" FF
Flash EF	10u" FF	15u" FG
Flash EG	10u" FG	15u" FH
Flash EH	10u" FH	15u" FI
Flash EI	10u" FI	15u" FJ
Flash FJ	10u" FJ	15u" FK
Flash FK	10u" FK	15u" FL
Flash FL	10u" FL	15u" FM
Flash FM	10u" FM	15u" FN
Flash FN	10u" FN	15u" FO
Flash FO	10u" FO	15u" FP
Flash FP	10u" FP	15u" FQ
Flash FQ	10u" FQ	15u" FR
Flash FR	10u" FR	15u" FS
Flash FS	10u" FS	15u" FT
Flash FT	10u" FT	15u" FU
Flash FU	10u" FU	15u" FV
Flash FV	10u" FV	15u" FW
Flash FW	10u" FW	15u" FX
Flash FX	10u" FX	15u" FY
Flash FY	10u" FY	15u" FZ
Flash FZ	10u" FZ	15u" GA
Flash GA	10u" GA	15u" GB
Flash GB	10u" GB	15u" GC
Flash GC	10u" GC	15u" GD
Flash GD	10u" GD	15u" GE
Flash GE	10u" GE	15u" GF
Flash GF	10u" GF	15u" GG
Flash GG	10u" GG	15u" GH
Flash GH	10u" GH	15u" GI
Flash GI	10u" GI	15u" GJ
Flash GJ	10u" GJ	15u" GK
Flash GK	10u" GK	15u" GL
Flash GL	10u" GL	15u" GM
Flash GM	10u" GM	15u" GN
Flash GN	10u" GN	15u" GO
Flash GO	10u" GO	15u" GP
Flash GP	10u" GP	15u" GQ
Flash GQ	10u" GQ	15u" GR
Flash GR	10u" GR	15u" GS
Flash GS	10u" GS	15u" GT
Flash GT	10u" GT	15u" GU
Flash GU	10u" GU	15u" GV
Flash GV	10u" GV	15u" GW
Flash GW	10u" GW	15u" GX
Flash GX	10u" GX	15u" GY
Flash GY	10u" GY	15u" GZ
Flash GZ	10u" GZ	15u" HA
Flash HA	10u" HA	15u" HB
Flash HB	10u" HB	15u" HC
Flash HC	10u" HC	15u" HD
Flash HD	10u" HD	15u" HE
Flash HE	10u" HE	15u" HF
Flash HF	10u" HF	15u" HG
Flash HG	10u" HG	15u" HH
Flash HH	10u" HH	15u" HI
Flash HI	10u" HI	15u" HJ
Flash HJ	10u" HJ	15u" HK
Flash HK	10u" HK	15u" HL
Flash HL	10u" HL	15u" HM
Flash HM	10u" HM	15u" HN
Flash HN	10u" HN	15u" HO
Flash HO	10u" HO	15u" HP
Flash HP	10u" HP	15u" HQ
Flash HQ	10u" HQ	15u" HR
Flash HR	10u" HR	15u" HS
Flash HS	10u" HS	15u" HT
Flash HT	10u" HT	15u" HU
Flash HU	10u" HU	15u" HV
Flash HV	10u" HV	15u" HW
Flash HW	10u" HW	15u" HX
Flash HX	10u" HX	15u" HY
Flash HY	10u" HY	15u" HZ
Flash HZ	10u" HZ	15u" IA
Flash IA	10u" IA	15u" IB
Flash IB	10u" IB	15u" IC
Flash IC	10u" IC	15u" ID
Flash ID	10u" ID	15u" IE
Flash IE	10u" IE	15u" IF
Flash IF	10u" IF	15u" IG
Flash IG	10u" IG	15u" IH
Flash IH	10u" IH	15u" II
Flash II	10u" II	15u" IJ
Flash IJ	10u" IJ	15u" IK
Flash IK	10u" IK	15u" IL
Flash IL	10u" IL	15u" IM
Flash IM	10u" IM	15u" IN
Flash IN	10u" IN	15u" IO
Flash IO	10u" IO	15u" IP
Flash IP	10u" IP	15u" IQ
Flash IQ	10u" IQ	15u" IR
Flash IR	10u" IR	15u" IS
Flash IS	10u" IS	15u" IT
Flash IT	10u" IT	15u" IU
Flash IU	10u" IU	15u" IV
Flash IV	10u" IV	15u" IW
Flash IW	10u" IW	15u" IX
Flash IX	10u" IX	15u" IY
Flash IY	10u" IY	15u" IZ
Flash IZ	10u" IZ	15u" JA
Flash JA	10u" JA	15u" JB
Flash JB	10u" JB	15u" JC
Flash JC	10u" JC	15u" JD
Flash JD	10u" JD	15u" JE
Flash JE	10u" JE	15u" JF
Flash JF	10u" JF	15u" JG
Flash JG	10u" JG	15u" JH
Flash JH	10u" JH	15u" JI
Flash JI	10u" JI	15u" JJ
Flash JJ	10u" JJ	15u" JK
Flash JK	10u" JK	15u" JL
Flash JL	10u" JL	15u" JM
Flash JM	10u" JM	15u" JN
Flash JN	10u" JN	15u" JO
Flash JO	10u" JO	15u" JP
Flash JP	10u" JP	15u" JQ
Flash JQ	10u" JQ	15u" JR
Flash JR	10u" JR	15u" JS
Flash JS	10u" JS	15u" JT
Flash JT	10u" JT	15u" JU
Flash JU	10u" JU	15u" JV
Flash JV	10u" JV	15u" JW
Flash JW	10u" JW	15u" JX
Flash JX	10u" JX	15u" JY
Flash JY	10u" JY	15u" JZ
Flash JZ	10u" JZ	15u" KA
Flash KA	10u" KA	15u" KB
Flash KB	10u" KB	15u" KC
Flash KC	10u" KC	15u" KD
Flash KD	10u" KD	15u" KE
Flash KE	10u" KE	15u" KF
Flash KF	10u" KF	15u" KG
Flash KG	10u" KG	15u" KH
Flash KH	10u" KH	15u" KI
Flash KI	10u" KI	15u" KJ
Flash KJ	10u" KJ	15u" KK
Flash KK	10u" KK	15u" KL
Flash KL	10u" KL	15u" KM
Flash KM	10u" KM	15u" KN
Flash KN	10u" KN	15u" KO
Flash KO	10u" KO	15u" KP
Flash KP	10u" KP	15u" KQ
Flash KQ	10u" KQ	15u" KR
Flash KR	10u" KR	15u" KS
Flash KS	10u" KS	15u" KT
Flash KT	10u" KT	15u" KU
Flash KU	10u" KU	15u" KV
Flash KV	10u" KV	15u" KW
Flash KW	10u" KW	15u" KX
Flash KX	10u" KX	15u" KY
Flash KY	10u" KY	15u" KZ
Flash KZ	10u" KZ	15u" LA
Flash LA	10u" LA	15u" LB
Flash LB	10u" LB	15u" LC
Flash LC	10u" LC	15u" LD
Flash LD	10u" LD	15u" LE
Flash LE	10u" LE	15u" LF
Flash LF	10u" LF	15u" LG
Flash LG	10u" LG	15u" LH
Flash LH	10u" LH	15u" LI
Flash LI	10u" LI	15u" LJ



Shenzhen Shentai Weifang Electronics Co., Ltd.

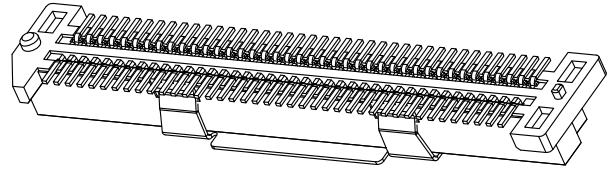
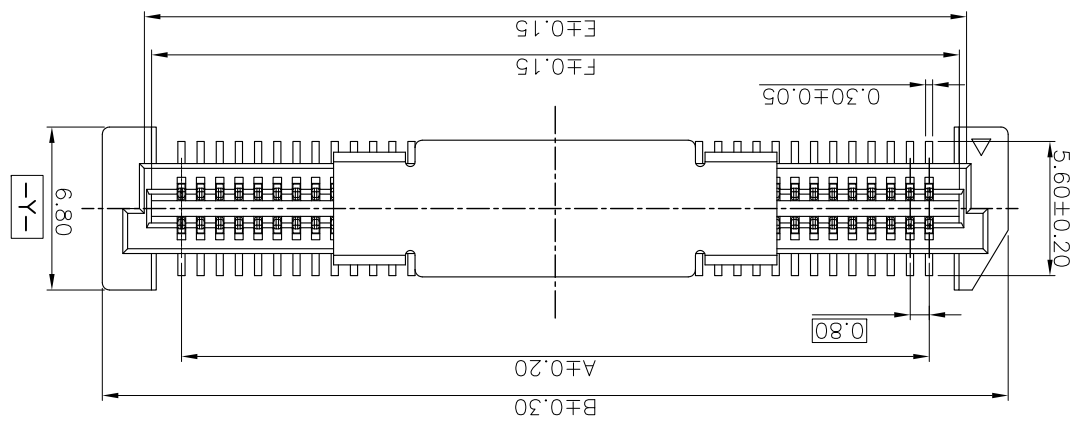
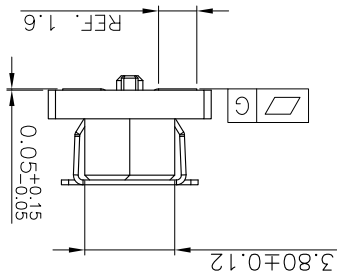
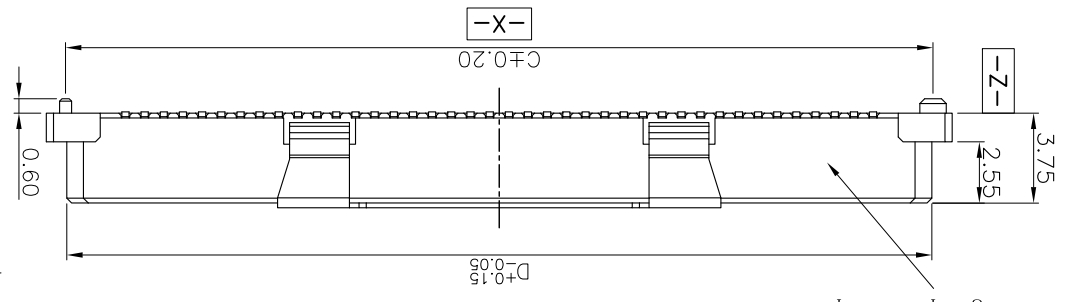
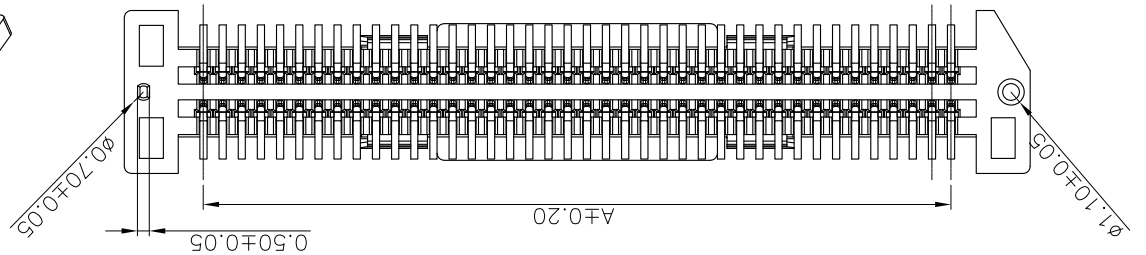
X.XXX	±1°	X.XX°	±1°
X.XX	±2°	X.X°	±2°
X.X	±3°	X°	±3°
TOLERANCE UNLESS OTHERWISE SPECIFIED			

SCALE	1:1
UNIT	mm
SIZE	A4

DATE	2018.03.26	DATE	2018.03.26
DATE	2018.03.26	DATE	2018.03.26
DATE	2018.03.26	DATE	2018.03.26
APPROVE:	Ady Zhou	CHECK:	Xie Yong
ORIGINAL DRAWN:	Xu Peiguang		

DWG. NO.	600-0000-0223
PARTS NO. (INTENDED USE)	BA42-XXXT-XX-XHX
TITLE	CUSTOMER DRAWING

REV.	2
SHEET	2/3



Definition	Code
Matte Tin plated	A
Bright Tin plated	V
Gold plated over all	
Flash B	1u" R 3u" C
Flash D	10u" E 15u" F
Flash G	25u" H 30u" J
Flash K	1u" S 3u" L
Flash M	10u" N 15u" P
Flash Q	25u" T 30u" U
©All plated is lead free.	

BTB  
 Series code  
 0.80 Pitch  
 Receptacle  
 PIN No.  
 40:80;40:80PIN  
 A0:100PIN ; 60:160PIN  
 C0:120PIN ; 10:180PIN  
 E0:140PIN ; K0:200PIN  
 Height  
 A: H=3.75mm  
 Soldering Type  
 T: SMT  
 0: Without Chamfer  
 1: With Chamfer  
 Housing Color  
 Null: Nature  
 B: Black

- NOTES: (UNLESS OTHERWISE SPECIFIED)  
 1. DIMENSION SHALL BE INTERPRETED PER ANSI Y14.5M-1994.  
 2. MATERIAL:  
 HOUSING MATERIAL: HIGH TEMPERATURE PLASTICS.  
 CONTACT MATERIAL: COPPER ALLOY,  
 VACUUM COVER MATERIAL: STAINLESS STEEL.  
 3. ELECTRICAL SPECIFICATION:  
 CONTACT RESISTANCE: 50 m ohms Max(initial),  
 INSULATION RESISTANCE: 100M ohms Min.  
 CURRENT RATING: 0.5A.  
 DIELECTRIC WITHSTANDING VOLTAGE: 500V AC rms/minute  
 4. MECHANICAL SPECIFICATION:  
 DURABILITY:30 CYCLES.  
 INSERTION FORCE: 150gf Max. PER PIN.  
 WITHDRAWAL FORCE: 25gf Min. PER PIN.  
 5. PRODUCT NUMBER MATRIX:  
 B A 4 2-XX X T-X X -X H X

Not enough space to print date code



Shenzhen Shentai Weifang Electronics Co., Ltd.

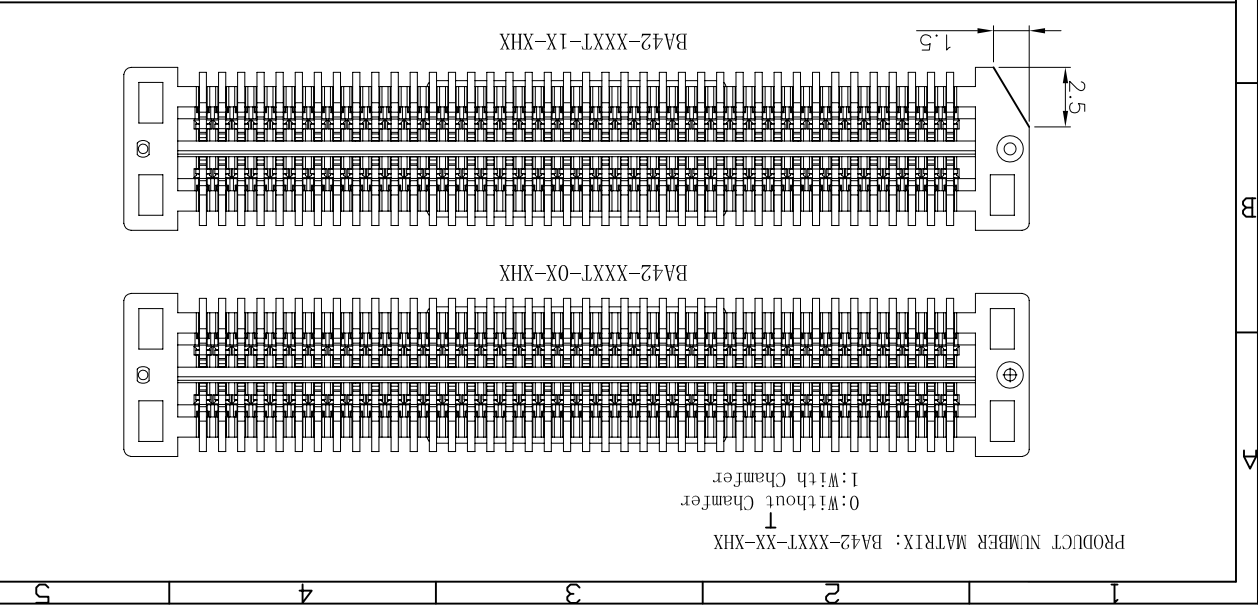
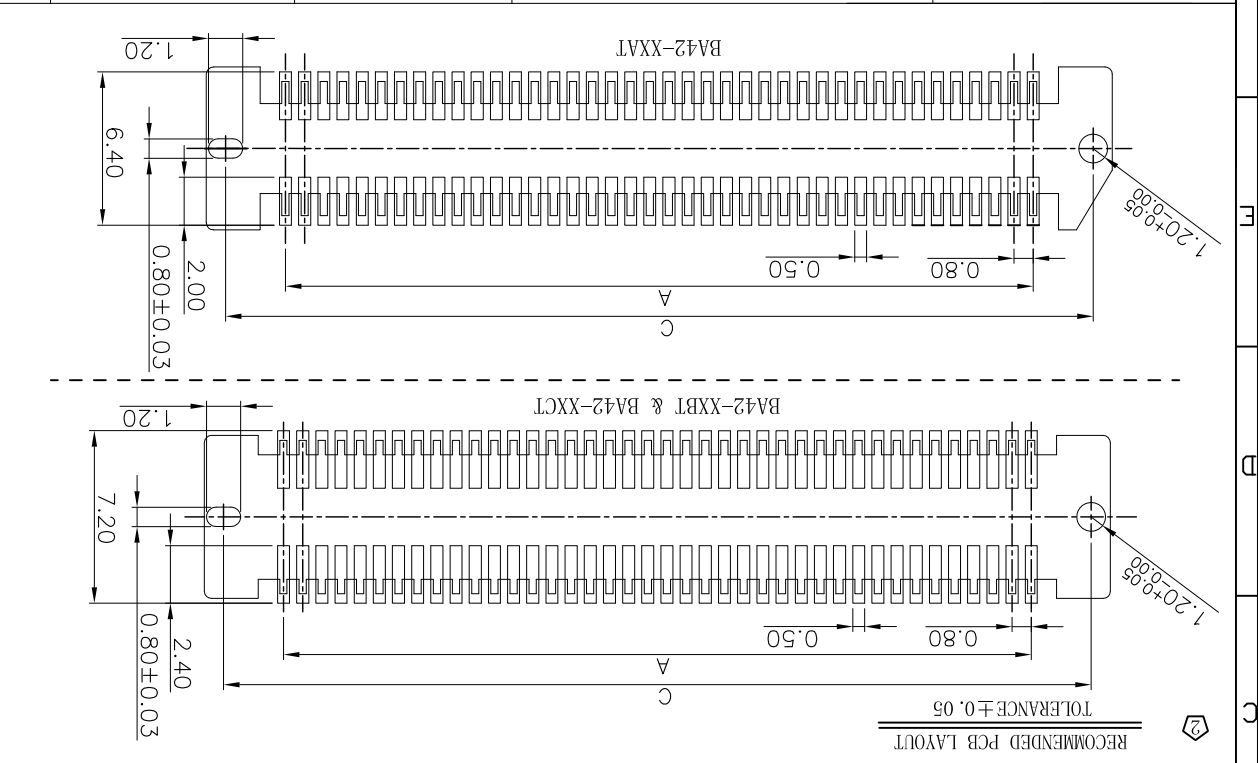
X. XXX	±1°	X. XX°	±1°
X. XX	±2°	X. X°	±2°
X. X	±3°	X. °	±3°
±0.30	±0.20	±0.20	±0.20

TOLERANCE UNLESS OTHERWISE SPECIFIED

SCALE	1:1
UNIT	mm
SIZE	A4

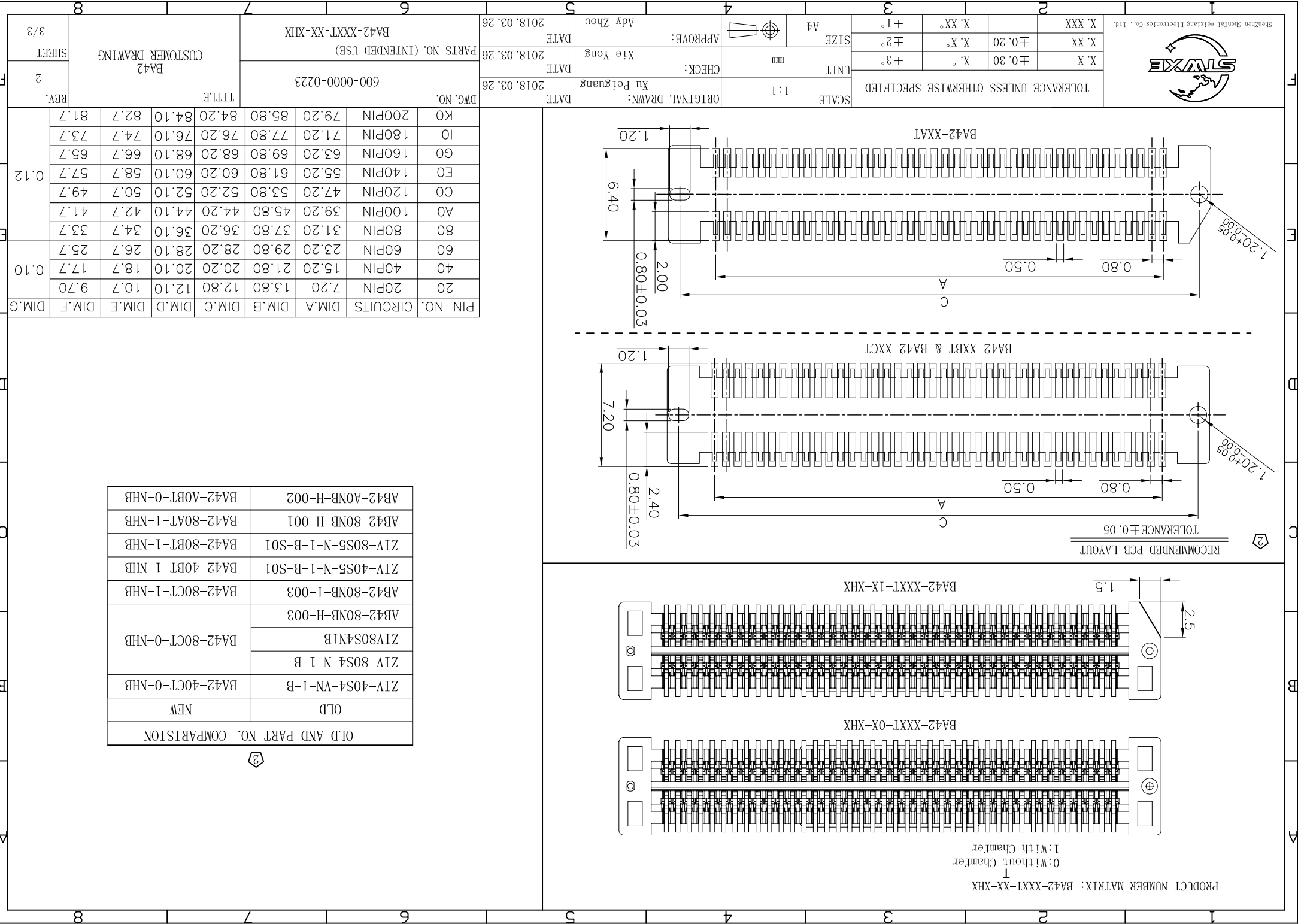
DATE	2018.03.26	DATE	2018.03.26
DATE	2018.03.26	DATE	2018.03.26
DATE	2018.03.26	DATE	2018.03.26

REV.	2	SHEET	3/3
CUSTOMER DRAWING			
BA42			
PARTS NO. (INTENDED USE)			
BA42-XXXX-XX-XHX			
DWG. NO.			
600-0000-0223			
TITLE			
BA42			



PIN NO.	CIRCUITS	DIM.A	DIM.B	DIM.C	DIM.D	DIM.E	DIM.F	DIM.G
20	20PIN	7.20	13.80	12.80	12.10	10.7	9.70	0.10
40	40PIN	15.20	21.80	20.20	20.10	18.7	17.7	0.10
60	60PIN	23.20	29.80	28.20	28.10	26.7	25.7	0.10
80	80PIN	31.20	37.80	36.20	36.10	34.7	33.7	0.12
A0	100PIN	39.20	45.80	44.20	44.10	42.7	41.7	0.12
C0	120PIN	47.20	53.80	52.20	52.10	50.7	49.7	0.12
E0	140PIN	55.20	61.80	60.20	60.10	58.7	57.7	0.12
G0	160PIN	63.20	69.80	68.20	68.10	66.7	65.7	0.12
I0	180PIN	71.20	77.80	76.20	76.10	74.7	73.7	0.12
K0	200PIN	79.20	85.80	84.20	84.10	82.7	81.7	0.12

OLD AND PART NO. COMPARISION	
OLD	NEW
ZIV-40S4-VN-1-B	BA42-40CT-0-NHB
ZIV-80S4-N-1-B	BA42-80CT-0-NHB
ZIV80S4N1B	BA42-80CT-0-NHB
AB42-80NB-H-003	BA42-80NB-1-003
ZIV-40S5-N-1-B-S01	BA42-40BT-1-NHB
ZIV-80S5-N-1-B-S01	BA42-80BT-1-NHB
AB42-80NB-H-001	BA42-80AT-1-NHB
AB42-A0NB-H-002	BA42-A0BT-0-NHB



## X-ON Electronics

Largest Supplier of Electrical and Electronic Components

*Click to view similar products for [Board to Board & Mezzanine Connectors](#) category:*

*Click to view products by [STWXE](#) manufacturer:*

Other Similar products are found below :

[10135583-642402LF](#) [89885-310LF](#) [589158040000018](#) [6-1393048-0](#) [68683-613](#) [MDF7-12DP-2.54DSA](#) [MDF7-18P-2.54DSA\(01\)](#) [MDF7-20DP-2.54DSA](#) [MDF7-26D-2.54DSA\(55\)](#) [MDF7-3P-2.54DSA\(01\)](#) [MDF7B-20P-2.54DSA\(01\)](#) [MDF7B-3P-2.54DSA\(55\)](#) [MDF7C-11P-2.54DSA\(55\)](#) [MDF7C-18P-2.54DSA\(55\)](#) [MDF7C-5P-2.54DSA\(01\)](#) [MDF7P-5P-2.54DSA\(55\)](#) [75234-0516](#) [FCN-230C068-11](#) [FCN-268F012-G/BD](#) [FCN-268F036-G/BD](#) [FCN-268M012-G/0D](#) [FCN-268M024-G/1D](#) [FCN-360C008-C](#) [FCN-360C040-C](#) [FCN-723J004/1](#) [MIS-048-01-F-D-DP-K](#) [832-10-034-10-001000](#) [93696-325LF](#) [11828-1FA](#) [AXK630345P](#) [18097-0013](#) [ICA-328STT](#) [2007042-2](#) [304400-2](#) [FCN-214Q030-G/0](#) [FCN-215Q040-G/0](#) [FCN-230C068-ESA](#) [FCN-234P048-G/0](#) [FCN-235D050-G/C](#) [FCN-360A3](#) [FCN-360C040-B](#) [210-93-314-41-105000](#) [2-22603-0](#) [379-064-521-202](#) [MDF7-12P-2.54DSA\(01\)](#) [MDF7-16P-2.54DS\(56\)](#) [MDF7-40DP-2.54DSA\(55\)](#) [MDF7-8P-2.54DSA\(55\)](#) [MDF7B-16P-2.54DSA\(55\)](#) [AXG720047](#)