



Shenzhen Shentai Weifang Electronics Co., Ltd.

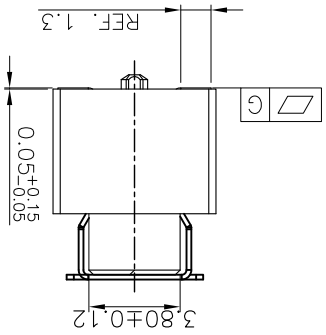
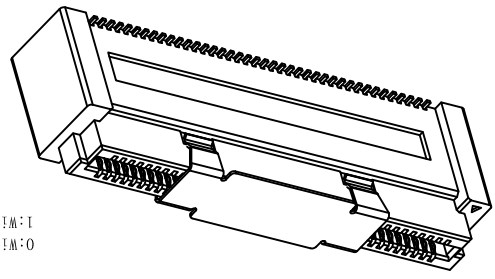
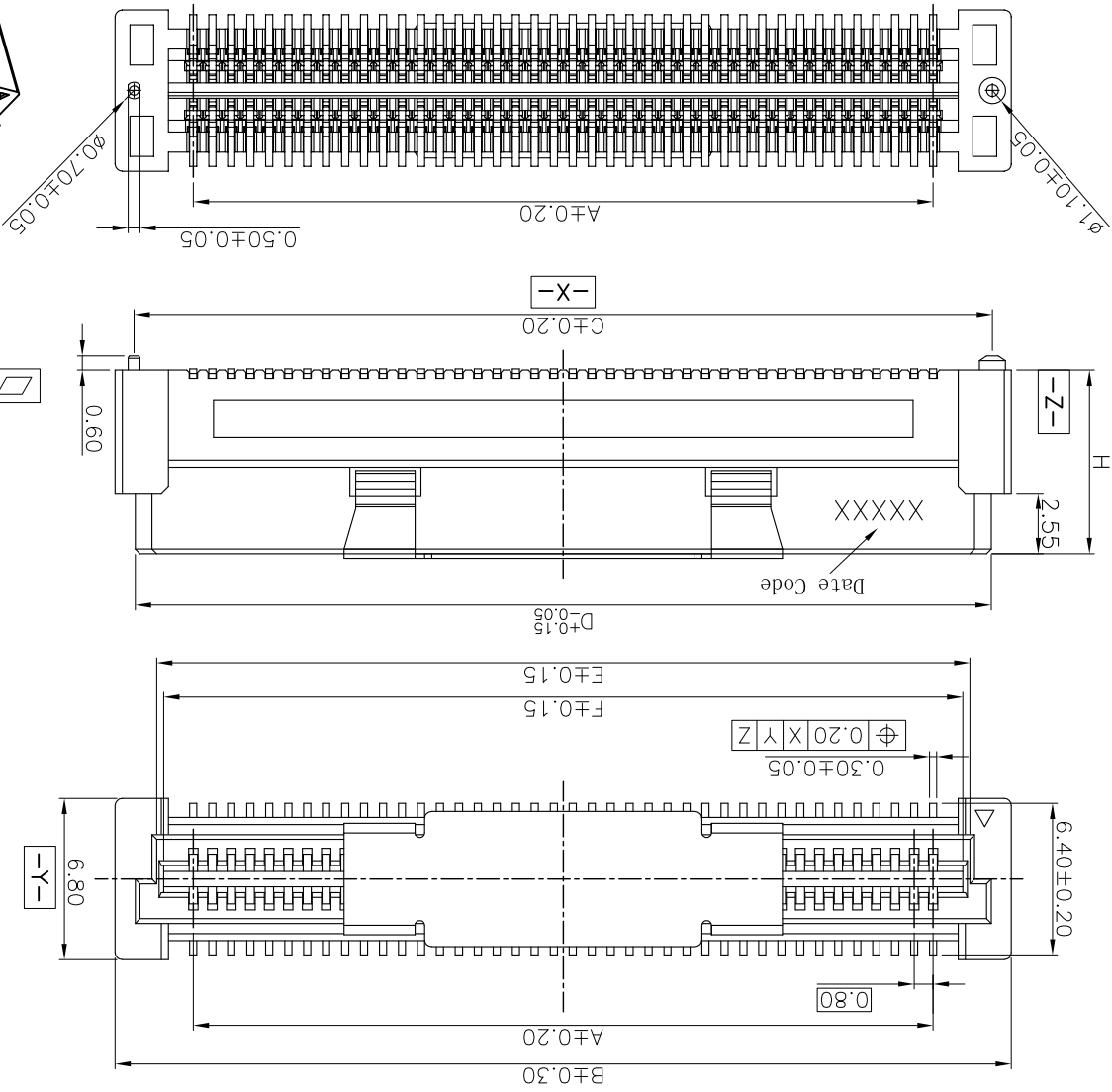
X.XXX	±1°	X.XX°	±1°
X.XX	±2°	X.X°	±2°
X.X	±3°	X.°	±3°
TOLERANCE UNLESS OTHERWISE SPECIFIED			

SCALE	1:1
UNIT	mm
SIZE	A4

DATE	2018.03.26	DATE	2018.03.26
DATE	2018.03.26	DATE	2018.03.26
DATE	2018.03.26	DATE	2018.03.26
APPROVE:	Ady Zhou	CHECK:	Xie Yong
ORIGINAL DRAWN:	Xu Peiguang		

DWG. NO.	600-0000-0223
PARTS NO. (INTENDED USE)	BA42-XXXT-XX-XHX
TITLE	BA42 CUSTOMER DRAWING

REV.	2
SHEET	1/3



Notes and specifications for the connector:

- Notes: (UNLESS OTHERWISE SPECIFIED) 1. DIMENSION SHALL BE INTERPRETED PER ANSI Y14.5M-1994.
- 2. MATERIAL: HOUSING MATERIAL: HIGH TEMPERATURE PLASTICS. CONTACT MATERIAL: COPPER ALLOY, VACUUM COVER MATERIAL: STAINLESS STEEL.
- 3. ELECTRICAL SPECIFICATION: CONTACT RESISTANCE: 50 m ohms Max(Initial). INSULATION RESISTANCE: 100M ohms Min. CURRENT RATING: 0.5A. DIELECTRIC WITHSTANDING VOLTAGE: 500V AC rms./minute.
- 4. MECHANICAL SPECIFICATION: DURABILITY:30 CYCLES. INSERTION FORCE: 150gf Max. PER PIN. WITHDRAWAL FORCE: 25gf Min. PER PIN.
- 5. PRODUCT NUMBER MATRIX:

BTB	Series code	B A 4 2-XX X 1-X X -X H X
Receptacle	0.80 Pitch	
PN No.	40:80:40:80PIN	
Height	E0:140PIN ; K0:200PIN	
	C0:120PIN ; G0:160PIN	
	A0:100PIN ; G0:160PIN	
	B: H=7.75mm	
	C: H=11.75mm	
Soldering Type	T:SMT	
	0:Without Chamfer	
	1:With Chamfer	
Housing Color	Null:Nature	
	B:Black	

Code	Definition
A	Matte Tin plated
V	Bright Tin plated
Gold plated over all	
C	Flash B 1u" R 3u" C
F	5u" D 10u" E 15u" F
J	20u" G 25u" H 30u" J
Duplex plated	
L	Flash K 1u" S 3u" L
P	5u" M 10u" N 15u" P
U	20u" Q 25u" T 30u" U
All plated is lead free.	

Packing:	B: REEL+MPAD
	Q: HOT SEALING
	REEL+MPAD
H: Halogen free	
Plating	
Code	Definition
A	Matte Tin plated
V	Bright Tin plated
Gold plated over all	
C	Flash B 1u" R 3u" C
F	5u" D 10u" E 15u" F
J	20u" G 25u" H 30u" J
Duplex plated	
L	Flash K 1u" S 3u" L
P	5u" M 10u" N 15u" P
U	20u" Q 25u" T 30u" U
All plated is lead free.	

REV.	ECN Number	Description
I	E17070069	RELEASE
	E18030021	ADD PART NUMBER
Drawn		
		XPg_2017.07.20
		XPg_2018.03.26



Shenzhen Shentai Weifang Electronics Co., Ltd.

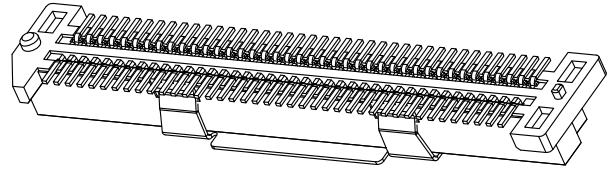
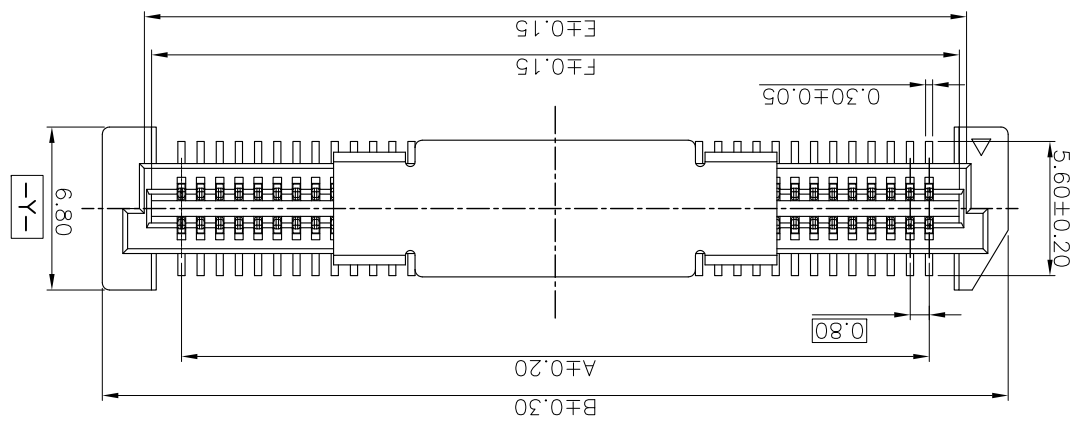
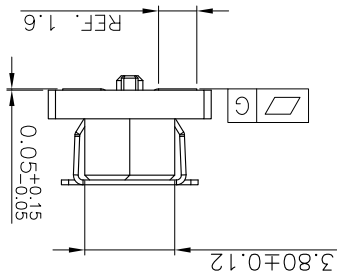
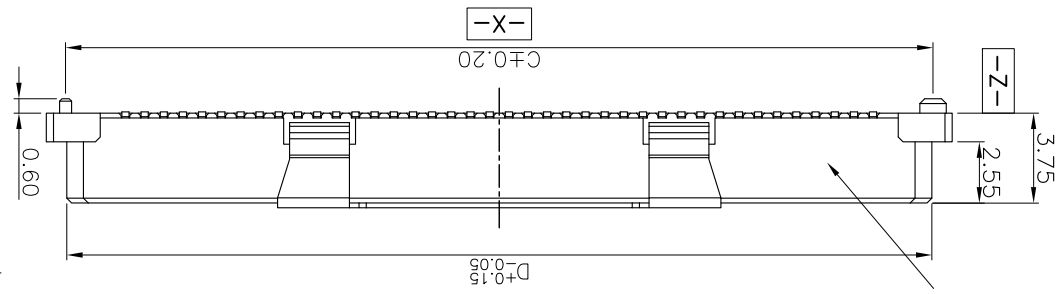
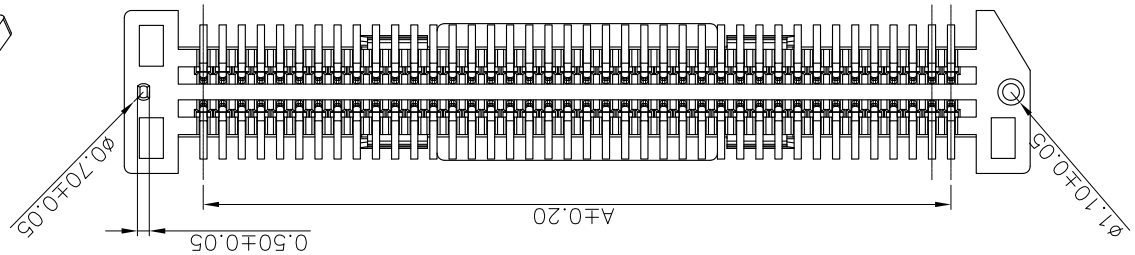
X.XXX	±1°	X.XX°	±1°
X.XX	±2°	X.X°	±2°
X.X	±3°	X°	±3°
TOLERANCE UNLESS OTHERWISE SPECIFIED			

SCALE	1:1
UNIT	mm
SIZE	A4

DATE	2018.03.26	DATE	2018.03.26
DATE	2018.03.26	DATE	2018.03.26
DATE	2018.03.26	DATE	2018.03.26
APPROVE:	Ady Zhou	CHECK:	Xie Yong
ORIGINAL DRAWN:	Xu Peiguang		

DWG. NO.	600-0000-0223
PARTS NO. (INTENDED USE)	BA42-XXXT-XX-XHX
TITLE	CUSTOMER DRAWING

REV.	2
SHEET	2/3



Definition	Code
Matte Tin plated	A
Bright Tin plated	V
Gold plated over all	
Flash B	1u" R 3u" C
Flash D	10u" E 15u" F
Flash G	25u" H 30u" J
Flash K	1u" S 3u" L
Flash M	10u" N 15u" P
Flash Q	25u" T 30u" U
©All plated is lead free.	

BTB
 Series code
 0.80 Pitch
 Receptacle
 PIN No.
 40:80;40:80PIN
 A0:100PIN ; 60:160PIN
 C0:120PIN ; 10:180PIN
 E0:140PIN ; K0:200PIN
 Height
 A: H=3.75mm
 Soldering Type
 T: SMT
 0: Without Chamfer
 1: With Chamfer
 Housing Color
 Null: Nature
 B: Black

- NOTES: (UNLESS OTHERWISE SPECIFIED)
- DIMENSION SHALL BE INTERPRETED PER ANSI Y14.5M-1994.
 - MATERIAL:
 HOUSING MATERIAL: HIGH TEMPERATURE PLASTICS.
 CONTACT MATERIAL: COPPER ALLOY,
 VACUUM COVER MATERIAL: STAINLESS STEEL.
 - ELECTRICAL SPECIFICATION:
 CONTACT RESISTANCE: 50 m ohms Max(initial),
 INSULATION RESISTANCE: 100M ohms Min.
 CURRENT RATING: 0.5A.
 DIELECTRIC WITHSTANDING VOLTAGE: 500V AC rms/minute
 - MECHANICAL SPECIFICATION:
 DURABILITY: 30 CYCLES.
 INSERTION FORCE: 150gf Max. PER PIN.
 WITHDRAWAL FORCE: 25gf Min. PER PIN.
 - PRODUCT NUMBER MATRIX:
 B A 4 2-XX X T-X X -X H X

Not enough space to print date code



Shenzhen Shentai Weifang Electronics Co., Ltd.

TOLERANCE UNLESS OTHERWISE SPECIFIED

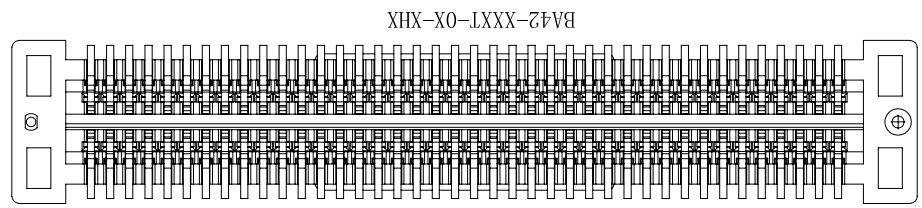
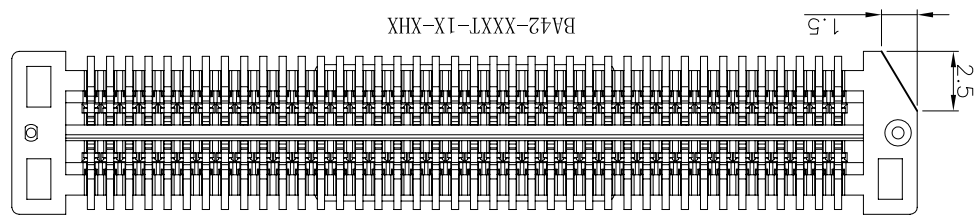
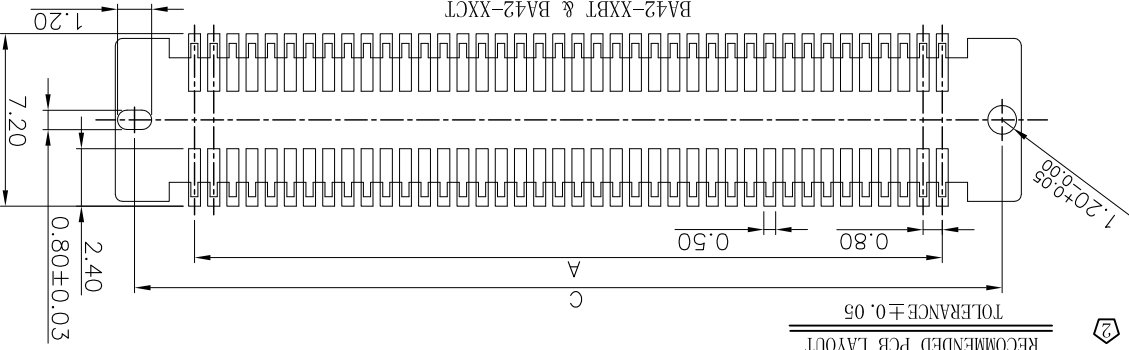
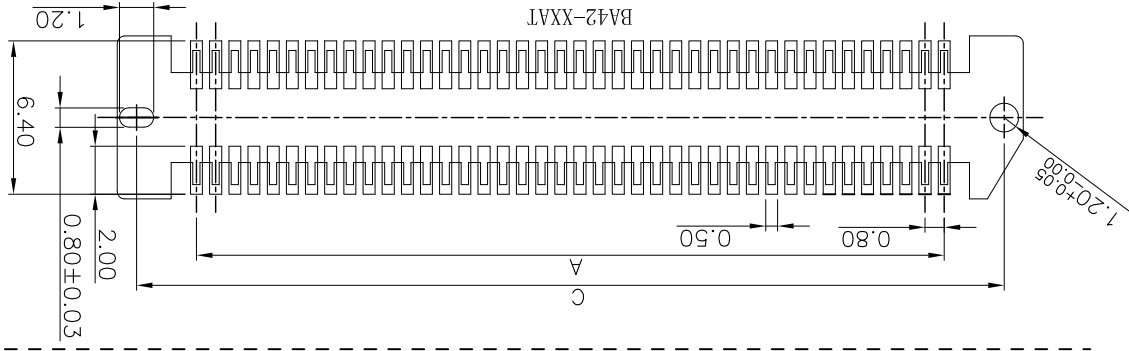
X.X	±0.30	X.°	±3°
X.XX	±0.20	X.°	±2°
X.XXX	±1°	X.XX°	±1°

SCALE	1:1
UNIT	mm
SIZE	A4

ORIGINAL DRAWN:	Xu Peiguang
CHECK:	Xie Yong
APPROVE:	Ady Zhou

DATE	2018.03.26
DATE	2018.03.26
DATE	2018.03.26

REV.	2	SHEET	3/3
TITLE	BA42 CUSTOMER DRAWING		
DWG. NO.	600-0000-0223	PARTS NO. (INTENDED USE)	BA42-XXXX-XX-XHX



PRODUCT NUMBER MATRIX: BA42-XXXXT-XX-XHX
 1 Without Chamfer
 1 With Chamfer

PIN NO.	CIRCUITS	DIM.A	DIM.B	DIM.C	DIM.D	DIM.E	DIM.F	DIM.G
20	20PIN	7.20	13.80	12.80	12.10	10.7	9.70	0.10
40	40PIN	15.20	21.80	20.20	20.10	18.7	17.7	0.10
60	60PIN	23.20	29.80	28.20	28.10	26.7	25.7	0.10
80	80PIN	31.20	37.80	36.20	36.10	34.7	33.7	0.12
A0	100PIN	39.20	45.80	44.20	44.10	42.7	41.7	0.12
C0	120PIN	47.20	53.80	52.20	52.10	50.7	49.7	0.12
E0	140PIN	55.20	61.80	60.20	60.10	58.7	57.7	0.12
G0	160PIN	63.20	69.80	68.20	68.10	66.7	65.7	0.12
I0	180PIN	71.20	77.80	76.20	76.10	74.7	73.7	0.12
K0	200PIN	79.20	85.80	84.20	84.10	82.7	81.7	0.12

OLD AND PART NO. COMPARISION	
OLD	NEW
ZIV-40S4-VN-1-B	BA42-40CT-0-NHB
ZIV-80S4-N-1-B	BA42-80CT-0-NHB
ZIV80S4N1B	BA42-80NB-H-003
AB42-80NB-1-003	BA42-80CT-1-NHB
ZIV-40S5-N-1-B-S01	BA42-40BT-1-NHB
ZIV-80S5-N-1-B-S01	BA42-80BT-1-NHB
AB42-80NB-H-001	BA42-80AT-1-NHB
AB42-A0NB-H-002	BA42-A0BT-0-NHB



X-ON Electronics

Largest Supplier of Electrical and Electronic Components

Click to view similar products for [Board to Board & Mezzanine Connectors](#) category:

Click to view products by [STWXE](#) manufacturer:

Other Similar products are found below :

[10135583-642402LF](#) [89885-310LF](#) [589158040000018](#) [6-1393048-0](#) [68683-613](#) [MDF7-12DP-2.54DSA](#) [MDF7-18P-2.54DSA\(01\)](#) [MDF7-20DP-2.54DSA](#) [MDF7-26D-2.54DSA\(55\)](#) [MDF7-3P-2.54DSA\(01\)](#) [MDF7B-20P-2.54DSA\(01\)](#) [MDF7B-3P-2.54DSA\(55\)](#) [MDF7C-11P-2.54DSA\(55\)](#) [MDF7C-18P-2.54DSA\(55\)](#) [MDF7C-5P-2.54DSA\(01\)](#) [MDF7P-5P-2.54DSA\(55\)](#) [75234-0516](#) [FCN-230C068-11](#) [FCN-268F012-G/BD](#) [FCN-268F036-G/BD](#) [FCN-268M012-G/0D](#) [FCN-268M024-G/1D](#) [FCN-360C008-C](#) [FCN-360C040-C](#) [FCN-723J004/1](#) [MIS-048-01-F-D-DP-K](#) [832-10-034-10-001000](#) [93696-325LF](#) [11828-1FA](#) [AXK630345P](#) [18097-0013](#) [ICA-328STT](#) [2007042-2](#) [304400-2](#) [FCN-214Q030-G/0](#) [FCN-215Q040-G/0](#) [FCN-230C068-ESA](#) [FCN-234P048-G/0](#) [FCN-235D050-G/C](#) [FCN-360A3](#) [FCN-360C040-B](#) [210-93-314-41-105000](#) [2-22603-0](#) [379-064-521-202](#) [MDF7-12P-2.54DSA\(01\)](#) [MDF7-16P-2.54DS\(56\)](#) [MDF7-40DP-2.54DSA\(55\)](#) [MDF7-8P-2.54DSA\(55\)](#) [MDF7B-16P-2.54DSA\(55\)](#) [AXG720047](#)