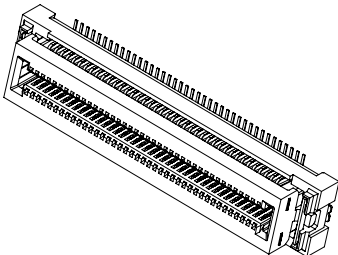
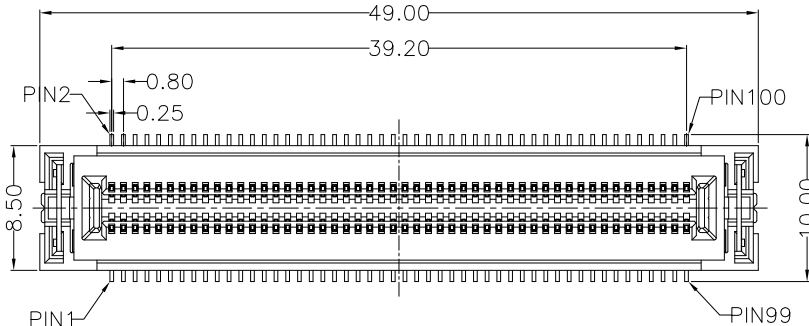
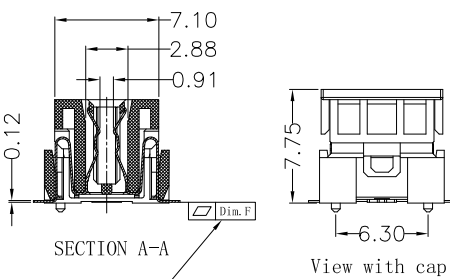
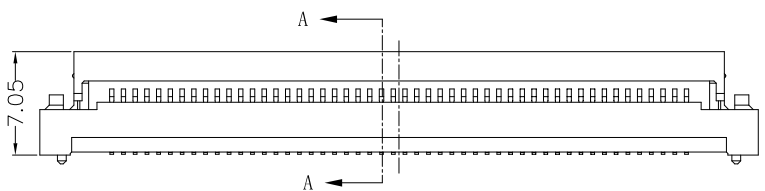


REV.	ECN Number	Description	Drawn
1	CS18030011	First issue	LGJ_2018.03.05
2	E20010009	Add new specifications	Smark
3	E20100007	图面整合(每个料号单独列出)	FQH_2020.10.13
4	E22080014	新增第3页120P规格	CRX_2022.08.16
5	E22080039	新增120P台高视图, 将120P尺寸8.5修改为9.0	CRX_2022.08.19

100PIN:BB42-AOAT-1B-XHR



- NOTES:
- HOUSING MATERIAL:HIGH TEMPERATURE PLASTICS BLACK,UL94V-0.
 - CONTACT MATERIAL:COPPER ALLOY.
 - RATING VOLTAGE: 50V AC/DC
 - CONTACT RESISTANCE: 80 m ohms MAX, INITIAL.
 - DIELECTRIC WITHSTANDING VOLTAGE: 500V AC rms./MINUTE.
 - INSULATION RESISTANCE: 100 M ohms MIN.
 - CURRENT RATING: 0.5 AMPERE.
 - DURABILITY: 30 CYCLES MIN.
 - INSERTION FORCE: 150g MAX. PER CONTACT.
 - WITHDRAW FORCE: 8.5g MIN. PER CONTACT.
 - OPERATING TEMPERATURE RANGE: -40° C~+105° C
 - STORAGE TEMPERATURE RANGE: -40° C~+105° C
 - ALL HARMFUL SUNSTANCES SHOULD BE COMPLIANT WITH THE ROHS2.0 REQUIREMENTS.
 - PRODUCT NUMBER MATRIX:



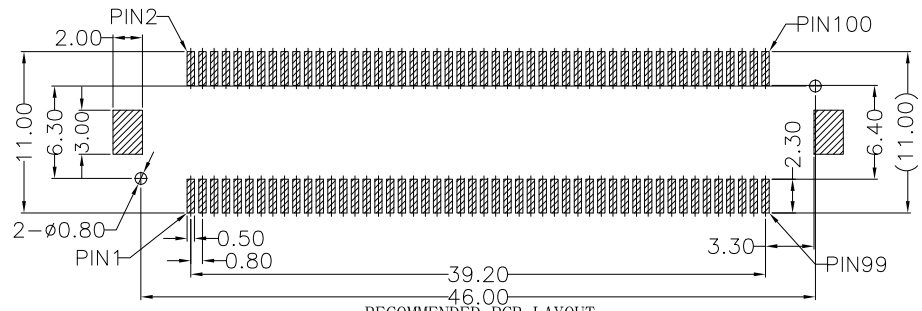
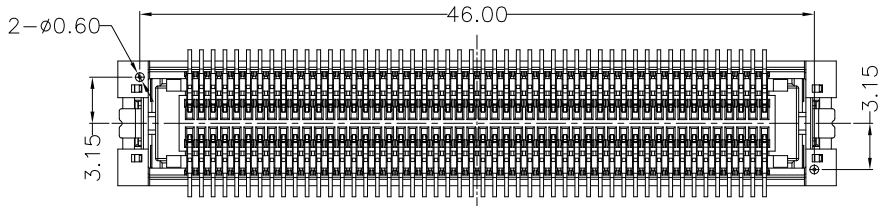
PIN NO.	DIM.F
40~100Pin	0.10
120Pin	0.15

Pitch:0.80mm
 Female
 PIN NO.
 Height flow code
 SMT TYPE
 Extended code
 Colour : black

BB42-XXAT-1B-XHR

packaging: REEL+PAD
 Halogen-free high temperature material
 Electroplating code

Gold plated					
Flash	B	1u"	R	3u"	C
5u"	D	10u"	E	15u"	F
20u"	G	25u"	H	30u"	J

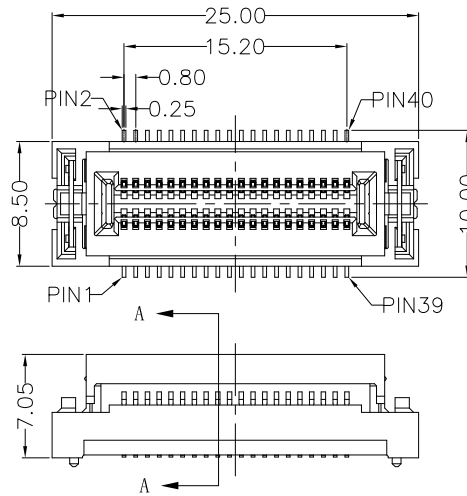


RECOMMENDED PCB LAYOUT
 TOLERANCE: ±0.05mm

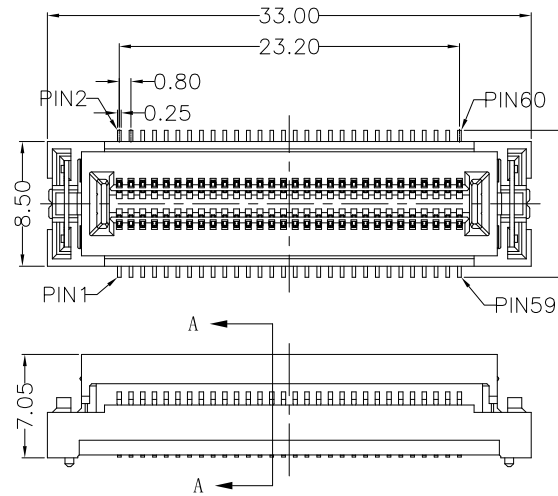


TOLERANCE UNLESS OTHERWISE SPECIFIED				SCALE	ORIGINAL DRAWN:	DATE	DWG. NO.	TITLE	REV.
X.X	±0.30	X.°	±3°	1:1	Ruixing chen	2022.08.19	600-0000-0228	CUSTOMER DRAWING	5
X.XX	±0.20	X.X°	±2°	UNIT	WEIYANG gan	2022.08.19	PARTS NO. (INTENDED USE)		SHEET
X.XXX		X.XX°	±1°	mm	ADY Zhou	2022.08.19	BB42-XXAT-1B-XHR		
				SIZE					
				A4					

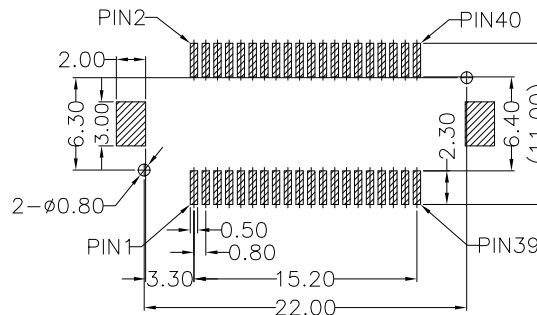
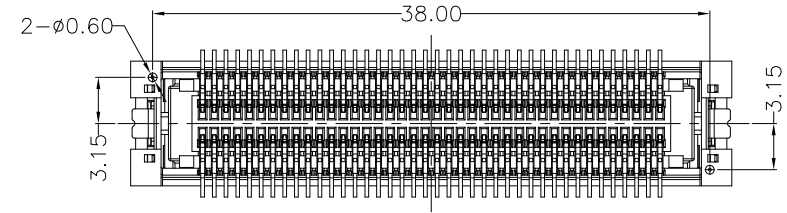
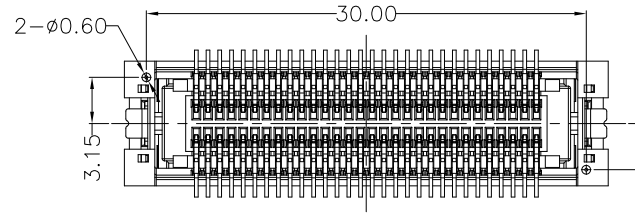
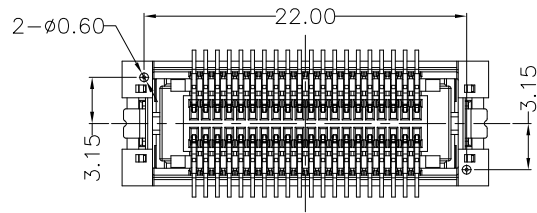
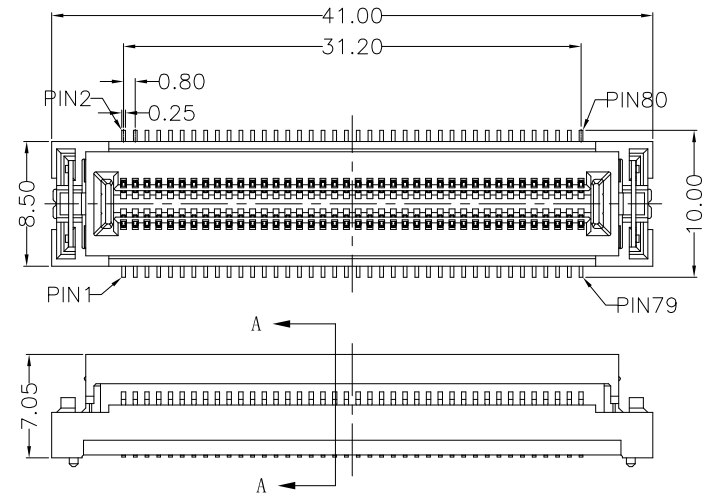
40PIN:BB42-40AT-1B-XHR



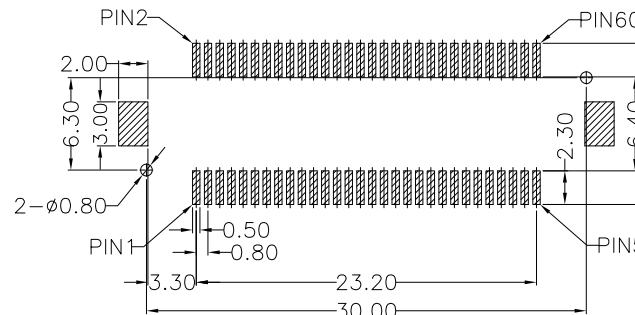
60PIN:BB42-60AT-1B-XHR



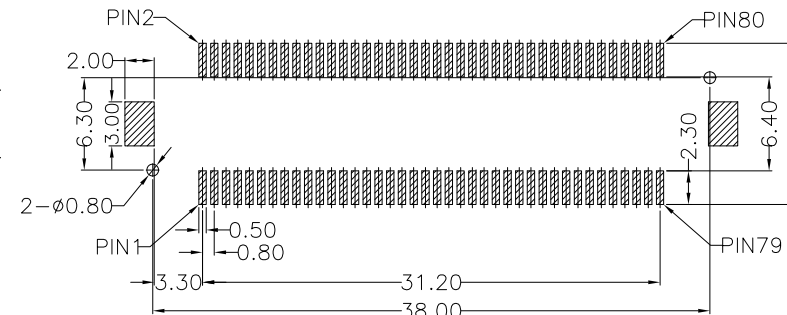
80PIN:BB42-80AT-1B-XHR



RECOMMENDED PCB LAYOUT
TOLERANCE: ±0.05mm



RECOMMENDED PCB LAYOUT
TOLERANCE: ±0.05mm



RECOMMENDED PCB LAYOUT
TOLERANCE: ±0.05mm



Shenzhen ShenTai weixiang Electronics Co., Ltd.

TOLERANCE UNLESS OTHERWISE SPECIFIED

X.X	±0.30	X.°	±3°
X.XX	±0.20	X.X°	±2°
X.XXX		X.XX°	±1°

SCALE	1:1
UNIT	mm
SIZE	A4



ORIGINAL DRAWN:
Ruixing chen
CHECK:
Weiyang gan
APPROVE:
Ady Zhou

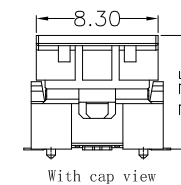
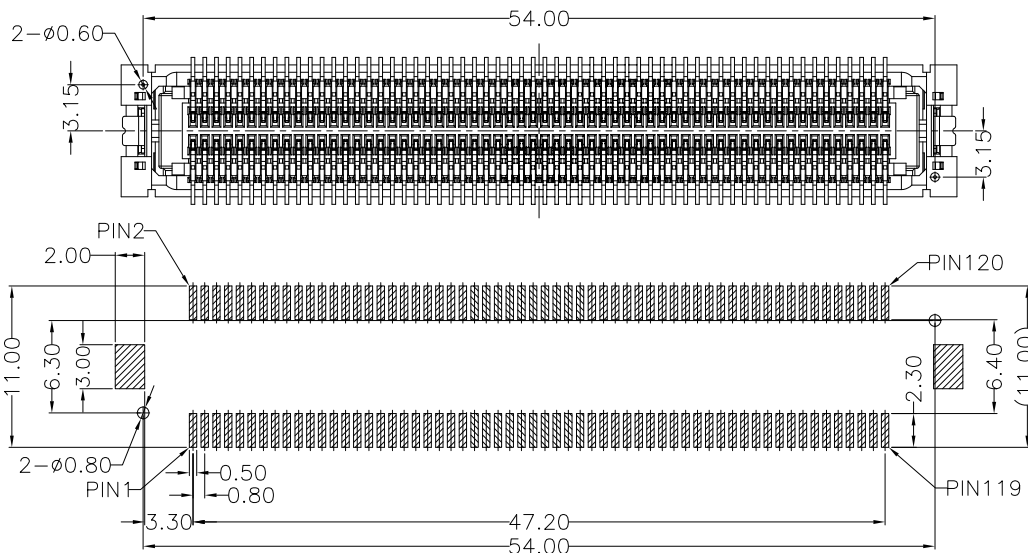
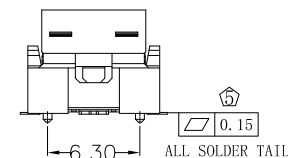
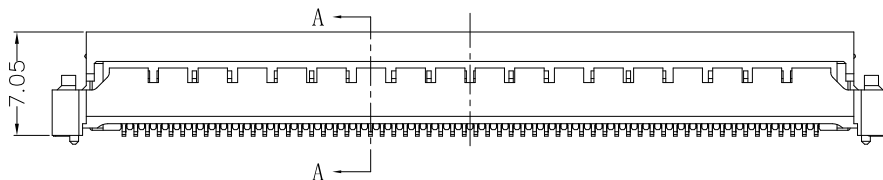
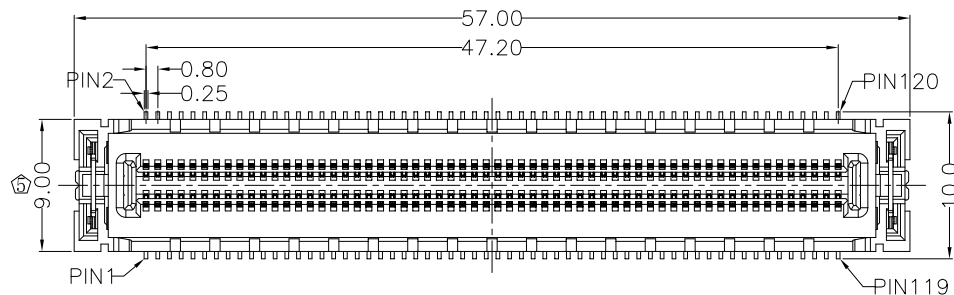
DATE
2022.08.19
DATE
2022.08.19
DATE
2022.08.19

DWG. NO.
600-0000-0228
PARTS NO. (INTENDED USE)
BB42-XXAT-1B-XHR

TITLE
CUSTOMER DRAWING

REV.
5
SHEET
2/3

120PIN:BB42-COAT-1B-XHR



RECOMMENDED PCB LAYOUT
TOLERANCE: ±0.05mm



ShenZhen ShenTai weixiang Electronics Co., Ltd.

TOLERANCE UNLESS OTHERWISE SPECIFIED

X.X	±0.30	X.°	±3°
X.XX	±0.20	X.X°	±2°
X.XXX		X.XX°	±1°

SCALE	1:1
UNIT	mm
SIZE	A4



ORIGINAL DRAWN:	Ruixing chen
DATE	2022.08.19
CHECK:	Weiyang gan
DATE	2022.08.19
APPROVE:	Ady Zhou
DATE	2022.08.19

DWG. NO.	600-0000-0228
PARTS NO. (INTENDED USE)	BB42-COAT-1B-XHR

TITLE	CUSTOMER DRAWING
-------	------------------

REV.	5
SHEET	3/3

X-ON Electronics

Largest Supplier of Electrical and Electronic Components

Click to view similar products for [Board to Board & Mezzanine Connectors](#) category:

Click to view products by [STWXE](#) manufacturer:

Other Similar products are found below :

[589158040000018](#) [MDF7C-18P-2.54DSA\(55\)](#) [FCN-268F036-G/BD](#) [FCN-268M012-G/0D](#) [FCN-268M024-G/1D](#) [MIS-048-01-F-D-DP-K](#)
[832-10-034-10-001000](#) [FX4C-80S-1.27DSA](#) [93696-330](#) [224393](#) [FCN-235D050-G/C](#) [210-93-314-41-105000](#) [MDF7-40DP-2.54DSA\(55\)](#)
[55323-1519](#) [069159702701000](#) [101A10019X](#) [105061100000861+](#) [75140-7012](#) [87471-650](#) [1744382-4](#) [063209](#) [10124054-515LF](#) [68685-603](#)
[8-1616154-3](#) [541371078](#) [IL-WX-10PB-HF-B-E1000E](#) [FX23-40P-0.5SV15B](#) [FCN-214J100-G/0](#) [354184](#) [P50-028-DDS-TG](#) [53309-2471](#)
[54546-2071](#) [1586617-1](#) [504248-1210](#) [504248-2010](#) [1-1437355-2](#) [9159005551906](#) [NDS100-004-BF](#) [93696-730LF](#) [91922-31141LF](#) [505274-](#)
[3440](#) [501493-2410](#) [504208-3410](#) [505006-0811](#) [505274-2040](#) [202436-1600](#) [202477-0414](#) [71660-7580](#) [73420-5192](#) [360-10-107-00-001000](#)