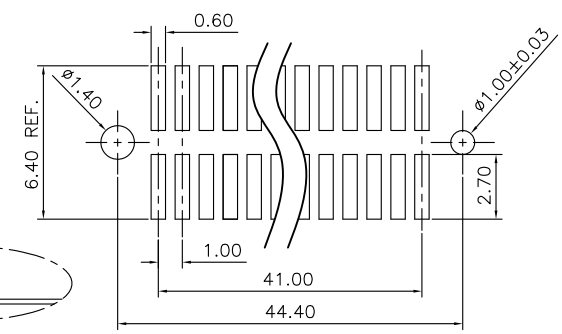
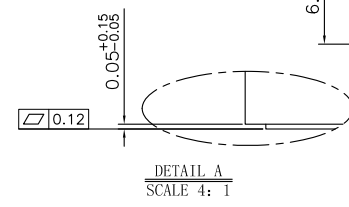
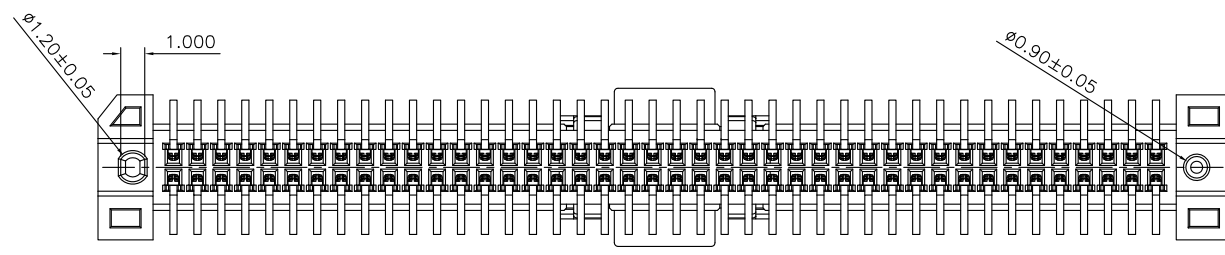
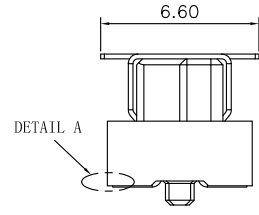
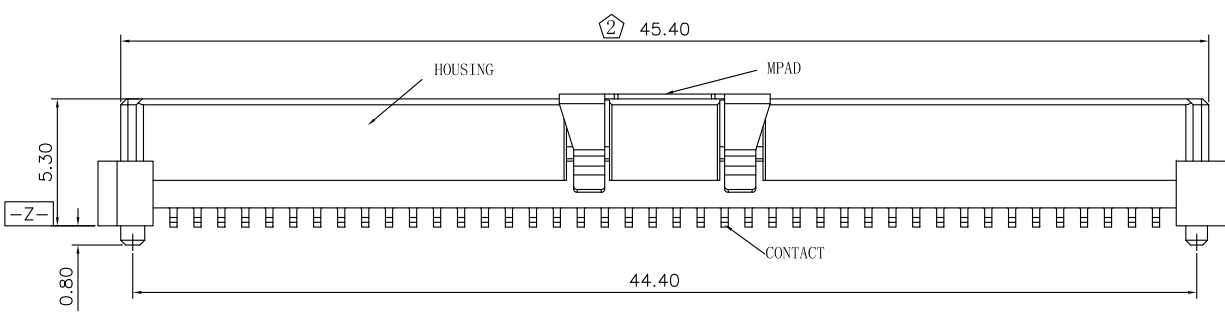
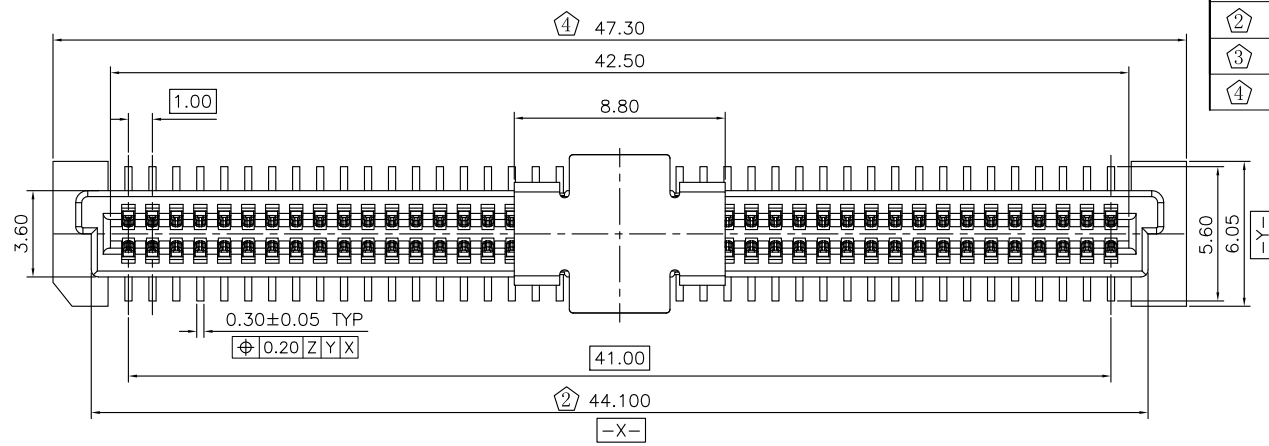
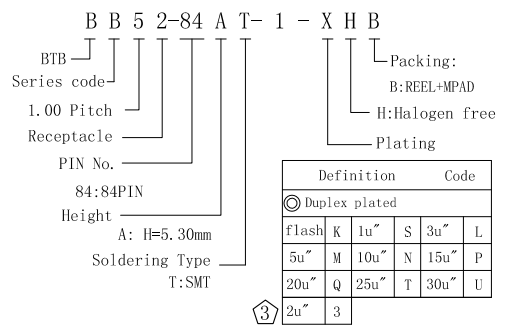


REV.	ECN Number	Description	Drawn
1	CS18120392	RELEASE	XPG_2018.12.27
②	E19010008	Modify Interface (Mated)	XPG_2019.01.03
③	E19010026	Add plating code:3	SJ_2019.01.17
④	E19010039	Modify Shape	XPG_2019.01.28

- NOTES: (UNLESS OTHERWISE SPECIFIED)
- DIMENSION SHALL BE INTERPRETED PER ANSI Y14.5M-1994.
 - MATERIAL:
HOUSING MATERIAL: HIGH TEMPERATURE PLASTICS.
CONTACT MATERIAL: COPPER ALLOY,
MPAD MATERIAL: STAINLESS STEEL.
 - ELECTRICAL SPECIFICATION:
CONTACT RESISTANCE: 30 m ohms Max(Initial).
INSULATION RESISTANCE: 1000M ohms Min.
CURRENT RATING: 1.0A.
DIELECTRIC WITHSTANDING VOLTAGE: 250V AC
 - MECHANICAL SPECIFICATION:
DURABILITY:50 CYCLES.
INSERTION FORCE: 120gf Max. Per Pin.
WITHDRAWAL FORCE: 10gf Min. Per Pin.
 - PRODUCT NUMBER MATRIX:



RECOMMENDED PCB LAYOUT
TOLERANCE ±0.05



TOLERANCE UNLESS OTHERWISE SPECIFIED			
X.X	±0.30	X.°	±3°
X.XX	±0.20	X.X°	±2°
X.XXX	±0.10	X.XX°	±1°

SCALE	1:1
UNIT	mm
SIZE	A4

ORIGINAL DRAWN:	XPG	DATE	2019.01.28
CHECK:	Xu peiguang	DATE	2019.01.28
APPROVE:	Ady zhou	DATE	2019.01.28

DWG. NO.	600-0000-0431
PARTS NO. (INTENDED USE)	BB52-84AT-1-XHB

TITLE	BB52-84AT CUSTOMER DRAWING
-------	-------------------------------

REV.	4
SHEET	1/1

X-ON Electronics

Largest Supplier of Electrical and Electronic Components

Click to view similar products for [Board to Board & Mezzanine Connectors](#) category:

Click to view products by [STWXE](#) manufacturer:

Other Similar products are found below :

[589158040000018](#) [MDF7C-18P-2.54DSA\(55\)](#) [FCN-268F036-G/BD](#) [FCN-268M012-G/0D](#) [FCN-268M024-G/1D](#) [MIS-048-01-F-D-DP-K](#)
[832-10-034-10-001000](#) [FX4C-80S-1.27DSA](#) [93696-330](#) [224393](#) [FCN-235D050-G/C](#) [210-93-314-41-105000](#) [MDF7-40DP-2.54DSA\(55\)](#)
[MIT-114-03-F-D-K](#) [55323-1519](#) [026-6203-PDB](#) [027-6203-PDB](#) [069159702701000](#) [101A10019X](#) [105061100000861+](#) [55650-0588-C](#) [75140-](#)
[7012](#) [87471-650](#) [YTW-30-07-H-Q-410-140](#) [YTT-112-01-H-Q](#) [063209](#) [10124054-515LF](#) [68685-603](#) [8-1616154-3](#) [MIS-019-01-F-D](#) [YTQ-](#)
[12103HQ](#) [541371078](#) [IL-WX-10PB-HF-B-E1000E](#) [FCN-214J100-G/0](#) [FCN-230C068-E/S](#) [354184](#) [MIT-019-04-F-D-K](#) [P50-028-DDS-TG](#)
[53309-2471](#) [54546-2071](#) [1586617-1](#) [504208-3010](#) [504208-5010](#) [504248-1010](#) [504248-1210](#) [504248-2010](#) [LST-115-07-S-D](#) [LST-105-07-G-](#)
[D](#) [9159005551906](#) [NDS100-004-BF](#)