

REV. / ECO. NO		DESCRIPTION	DATE	BY
A	1682	INITIAL RELEASE	5/8/2008	VJ
B	1852	UPDATE DIM 'C', TABLE, NOTE 3 & TOLERANCE BLOCK	11/12/08	JH

# PART NUMBER CODING

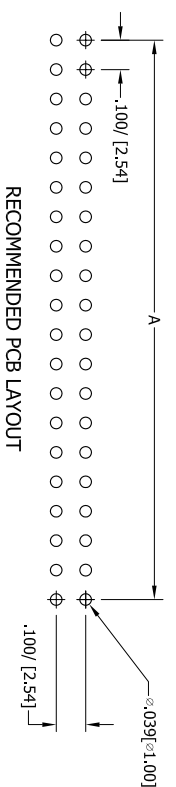
SBH11 - PBPC - D - - - - ST - - - -

**NUMBER OF POSITIONS**  
(CONTACTS PER ROW)

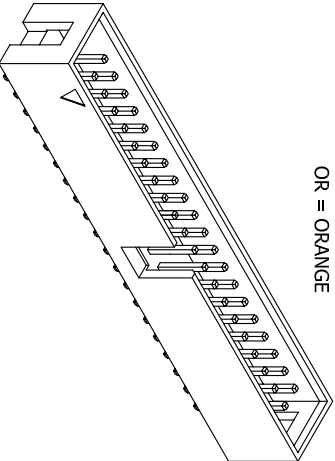
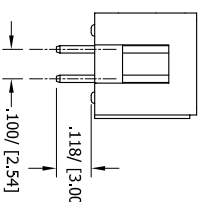
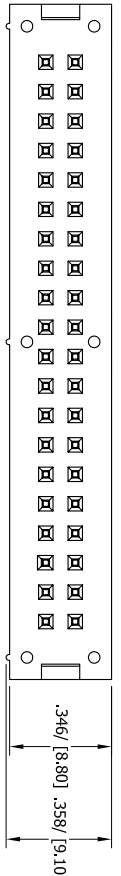
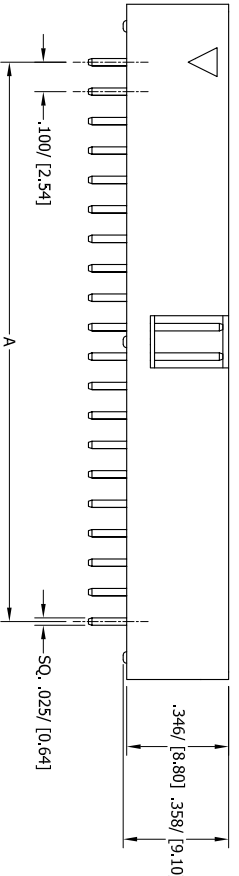
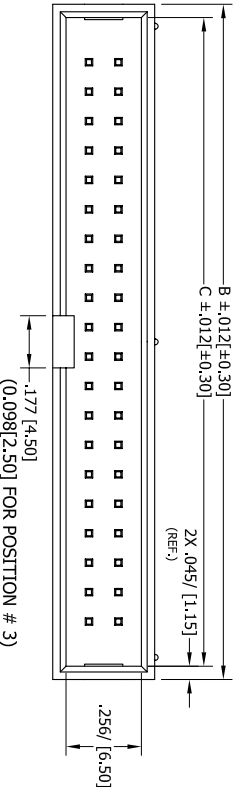
**TERMINATION**  
STRAIGHT

**COLOR**

- BK = BLACK
- YE = YELLOW
- RE = RED
- BL = BLUE
- GR = GREEN
- GY = GREY
- WH = WHITE
- OR = ORANGE



RECOMMENDED PCB LAYOUT



PART NUMBER	POSITIONS/ CONTACTS	A		B		C	
		INCH	MM	INCH	MM	INCH	MM
SBH11-PBPC-D03-ST-	03/06	0.200	5.08	0.595	15.12	0.505	12.82
SBH11-PBPC-D04-ST-	04/08	0.300	7.62	0.695	17.66	0.605	15.36
SBH11-PBPC-D05-ST-	05/10	0.400	10.16	0.795	20.20	0.705	17.90
SBH11-PBPC-D06-ST-	06/12	0.500	12.70	0.895	22.74	0.805	20.44
SBH11-PBPC-D07-ST-	07/14	0.600	15.24	0.995	25.28	0.905	22.98
SBH11-PBPC-D08-ST-	08/16	0.700	17.78	1.095	27.82	1.005	25.52
SBH11-PBPC-D10-ST-	10/20	0.900	22.86	1.295	32.90	1.205	30.60
SBH11-PBPC-D12-ST-	12/24	1.100	27.94	1.495	37.98	1.405	35.68
SBH11-PBPC-D13-ST-	13/26	1.200	30.48	1.595	40.52	1.505	38.22
SBH11-PBPC-D15-ST-	15/30	1.400	35.56	1.795	45.60	1.705	43.30
SBH11-PBPC-D17-ST-	17/34	1.600	40.64	1.995	50.68	1.905	48.38
SBH11-PBPC-D20-ST-	20/40	1.900	48.26	2.295	58.30	2.205	56.00
SBH11-PBPC-D22-ST-	22/44	2.100	53.34	2.495	63.38	2.405	61.08
SBH11-PBPC-D25-ST-	25/50	2.400	60.96	2.795	71.00	2.705	68.70
SBH11-PBPC-D30-ST-	30/60	2.900	73.66	3.295	83.70	3.205	81.40
SBH11-PBPC-D32-ST-	32/64	3.100	78.74	3.495	88.78	3.405	86.48

- NOTES:
- INSULATOR MATERIAL: PBT.
  - CONTACT MATERIAL: BRASS.
  - PLATING: GOLD FLASH OVERALL.
  - OPERATING TEMPERATURE: -40°C ~ 85°C.
  - PROCESSING TEMP: 230°C FOR 60 SECONDS MAX.
  - UL FLAMMABILITY RATING: 94V-0.  
(260°C, 10 SEC.)
  - VOLTAGE RATING: 20m OHMS MAX.
  - CURRENT RATING: 3 AMP PER CONTACT.
  - VOLTAGE DROP: AC 500 V.
  - INSULATION RESISTANCE: 1000 MEGA OHMS.



ROHS COMPLIANT

UNLESS OTHERWISE SPECIFIED:  
DIMENSIONS ARE IN INCHES(MM)

DRAWN: V. JARA 5/8/2008  
DATE: 5/8/2008

THE INFORMATION CONTAINED HEREIN IS UNCLASSIFIED EXCEPT WHERE SHOWN OTHERWISE IN A NOTICE IN THE MARGIN OF THIS DOCUMENT.

INTERPRET DIMENSIONS AND GEOMETRIC TOLERANCES PER: ANSI Y14.5-1994

DATE: 5/8/2008

SCALE: NONE

SHEET 1 OF 1

11091

REV B

SBH11-PBPC-D - ST -

CONTRACT SOLUTIONS

SULLINS

## X-ON Electronics

Largest Supplier of Electrical and Electronic Components

*Click to view similar products for [sullins](#) manufacturer:*

Other Similar products are found below :

[PEC36DGAN](#) [PBC36DADN](#) [PBC36DGAN](#) [GEC36SABN-M30](#) [PREC006DFBN-RC](#) [PZC04DBAN](#) [NPPN082AFCN-RC](#) [RBB60DHBS](#)  
[PPTC022LFBN-RC](#) [PPTC041LGBN-RC](#) [RCA44DRSD-S888](#) [EBC25DCWN](#) [LPPB031NFFN-RC](#) [GEC36DBAN](#) [EZM25DRXH](#) [SBH11-](#)  
[NBPC-D08-SM-BK](#) [NPTC042KFMS-RC](#) [TCC03DKSN-S1713](#) [ECC18DCCN](#) [NPPN081BFCN-RC](#) [FMC05DRTN-S1682](#) [EBC35DCWN](#)  
[SBH21-NBPN-D07-SM-BK](#) [WCT001-MCT](#) [NPPN041BFLC-RC](#) [PBC36DFAN](#) [SFH11-PBPC-D20-RA-BK](#) [NRTJ052TKEN-RC](#)  
[SPC02SVGN-RC](#) [PBC04DAAN](#) [PBC08DAGN](#) [MPP-1100-05-DS-4GR\(S1402\)](#) [PPTC042LFBN-RC](#) [SWR201-NRTN-S05-SA-WH](#)  
[PBC36DBCN](#) [PBC36SBCN](#) [PEC36SAGN](#) [PPPC142LJBN-RC](#) [PEC36DAHN](#) [PBC06DAAN](#) [PEC36DFCN](#) [GRPB121VWVN-RC](#)  
[PEC36DGBN](#) [PPTC162LFBN-RC](#) [PEC36DBEN](#) [PBC01DAAN](#) [PBC36SFEN](#) [SBH41-NBPB-D05-SM-BK](#) [PEC36SFEN](#) [PEC07DAAN](#)