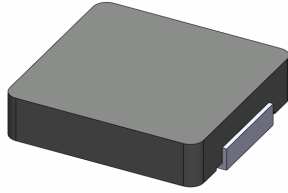


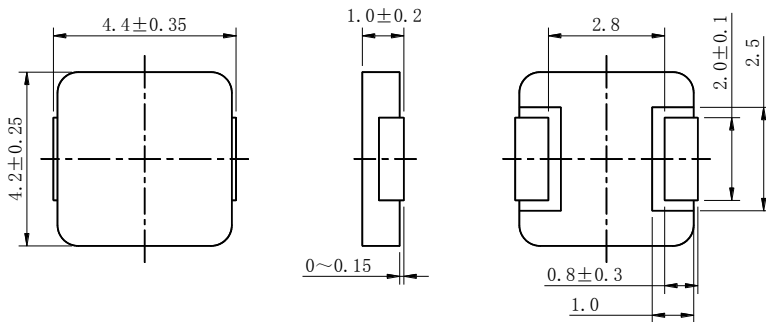
# SMD Power Inductor 0412CDMCC/DS



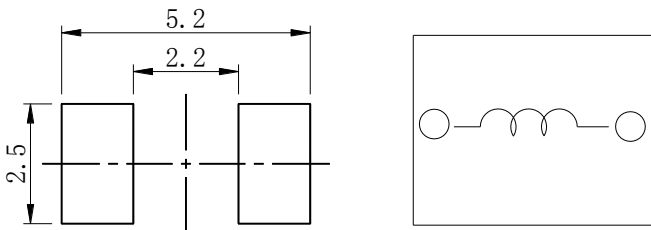
Halogen  
Free



## Dimension - [mm]



## Land pattern and Schematics - [mm]



## Description

- Metal compound molding type construction.
- Magnetically shielded.
- Low audible core noise.
- Suitable for large current.
- L × W × H: 4.75 × 4.45 × 1.2 mm Max.
- Product weight: 0.16g (Ref.)
- Moisture Sensitivity Level: 1
- RoHS compliance.
- Halogen Free available.

## Environmental Data

- Operating temperature range: -55°C ~ +125°C (including coil's self temperature rise)
- Storage temperature range: -55°C ~ +125°C
- Solder reflow temperature: 260 °C peak.

## Packaging

- Carrier tape and reel packaging.
- 3000pcs/Reel.

## Applications

- Ideally used in notebook, ultrabook, tablet PC, LCD display, Server application.
- HDD, SSD modules application.
- High current, POL converters.
- Low profile, high current power supplies.
- Battery powered devices.
- DC/DC converters in distributed power systems.



### Electrical Characteristics

Part No.	Stamp	Inductance( $\mu$ H) [Within] ※1	D.C.R(m $\Omega$ ) Max.(Typ.) at 25°C	Saturation Current (A)Max.(Typ.) at 25°C ※2	Temperature rise current(A) Typ.※3
0412CDMCCDS-R10MC	R10	0.10 $\pm$ 20%	7.2(6.0)	16.5(19.5)	11.5
0412CDMCCDS-R12MC	R12	0.12 $\pm$ 20%	7.8(6.5)	16.0(19.0)	11.0
0412CDMCCDS-R15MC	R15	0.15 $\pm$ 20%	9.6(8.0)	14.5(17.0)	9.4
0412CDMCCDS-R22MC	R22	0.22 $\pm$ 20%	11.0(9.2)	12.0(14.0)	9.0
0412CDMCCDS-R33MC	R33	0.33 $\pm$ 20%	19(17)	9.4(11.0)	6.5
0412CDMCCDS-R47MC	R47	0.47 $\pm$ 20%	21(19)	8.2(9.7)	6.0
0412CDMCCDS-R68MC	R68	0.68 $\pm$ 20%	36(32)	6.9(8.0)	4.7
0412CDMCCDS-1R0MC	1R0	1.0 $\pm$ 20%	47(43)	6.0(7.1)	4.1
0412CDMCCDS-1R5MC	1R5	1.5 $\pm$ 20%	75(68)	3.6(4.2)	2.9
0412CDMCCDS-2R2MC	2R2	2.2 $\pm$ 20%	84(80)	3.4(4.0)	2.7
0412CDMCCDS-3R3MC	3R3	3.3 $\pm$ 20%	140(125)	3.2(3.8)	2.1
0412CDMCCDS-4R7MC	4R7	4.7 $\pm$ 20%	195(175)	2.6(3.1)	1.8

※1 Measuring frequency Inductance at 100kHz 1V.

※2 Saturation current: This indicates the value of D.C. current when the inductance becomes 30% lower than its initial value.

※3 Temperature rise current: The actual value of D.C. current when the temperature of coil becomes  $\Delta T=40^{\circ}\text{C}$  ( $T_a=25^{\circ}\text{C}$ ).

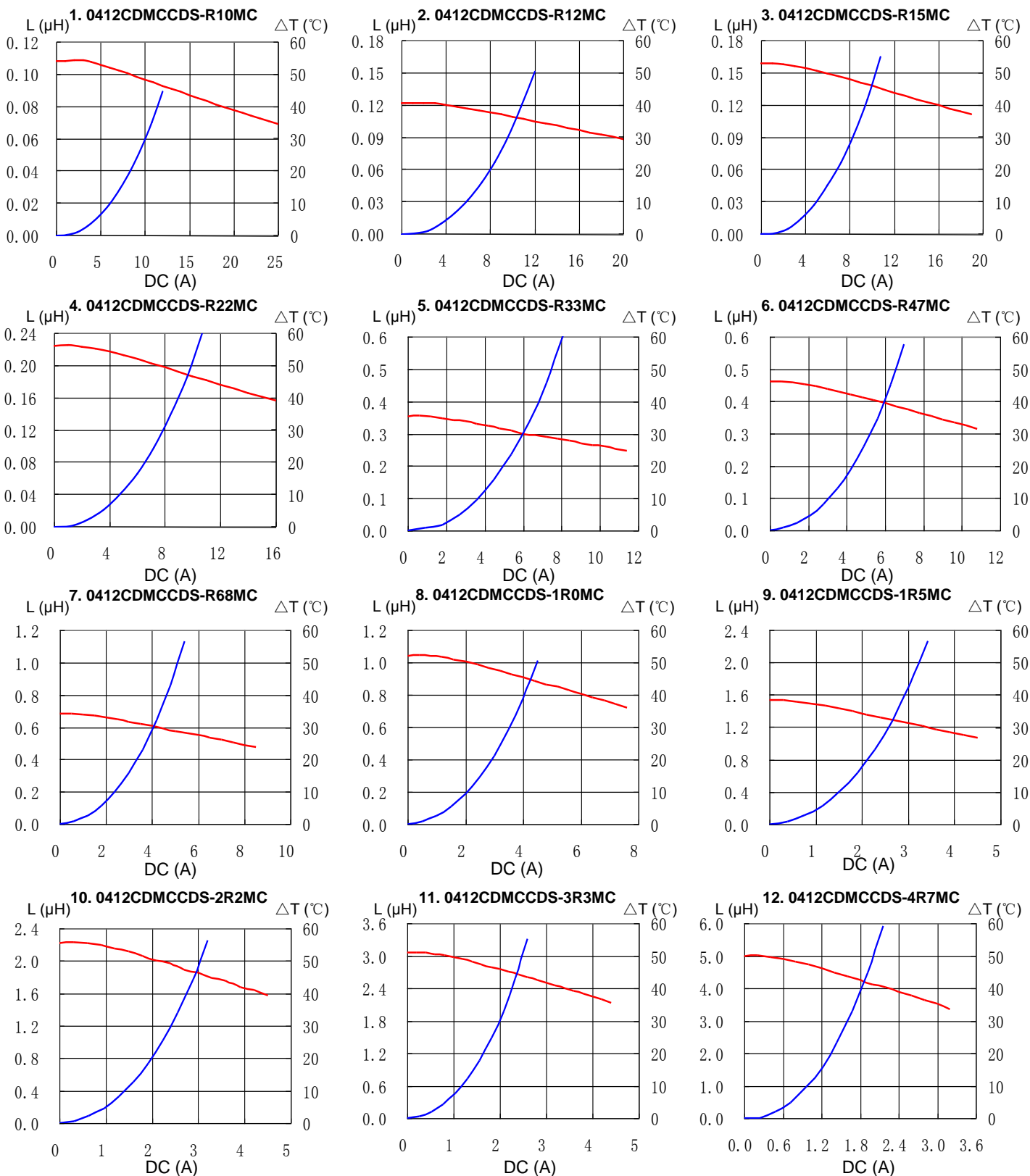
(Test board condition: FR4, Copper=70 $\mu\text{m}$ , four-layer PWB t=1.6mm)

# SMD Power Inductor 0412CDMCC/DS

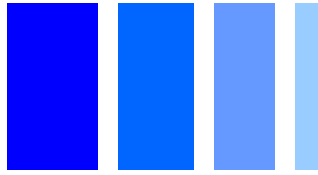


## Saturation Current & Temperature Rise Graph

— L (20°C) —  $\Delta T$

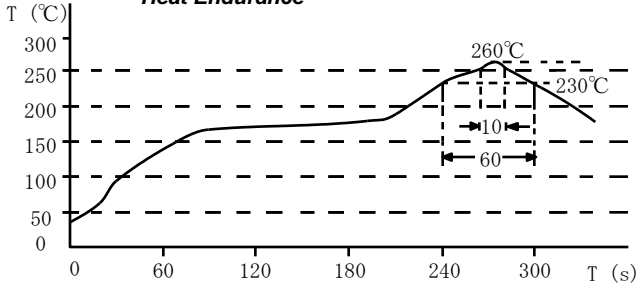


# SMD Power Inductor 0412CDMCC/DS

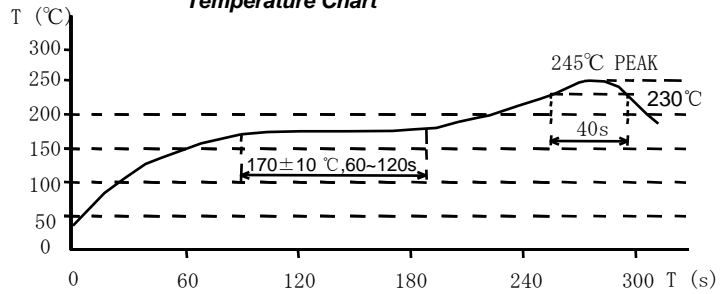


## Solder Reflow Condition

Heat Endurance



Temperature Chart



Please refer to the sales offices on our website - <http://www.sumida.com>

### Hong Kong

Tel.+852-2880-6781  
FAX.+852-2565-9600  
[sales@hk.sumida.com](mailto:sales@hk.sumida.com)

### Saitama(Japan)

Tel.+81-48-691-7300  
FAX.+81-48-691-7340  
[sales@jp.sumida.com](mailto:sales@jp.sumida.com)

### Chicago

Tel.+1-847-545-6700  
FAX. +1-847-545-6720  
[sales@us.sumida.com](mailto:sales@us.sumida.com)

### Shanghai

Tel.+86-21-5836-3299  
FAX.+86-21-5836-3266  
[shanghai.sales@cn.sumida.com](mailto:shanghai.sales@cn.sumida.com)

### Seoul

Tel.+82-2-6237-0777  
FAX.+82-2-6237-0778  
[sales@kr.sumida.com](mailto:sales@kr.sumida.com)

### Obernzell

Tel.+49-8591-937-0  
FAX. +49-8591-937-103  
[contact@eu.sumida.com](mailto:contact@eu.sumida.com)

### Shenzhen

Tel.+86-755-8291-0228  
FAX.+86-755-8291-0338  
[shenzhen.sales@cn.sumida.com](mailto:shenzhen.sales@cn.sumida.com)

### Singapore

Tel.+65-6296-3388  
FAX.+65-6841-4426  
[sales@sg.sumida.com](mailto:sales@sg.sumida.com)

### Neumarkt

Tel.+49-9181-4509-110  
FAX. +49-9181-4509-310  
[infocomp@eu.sumida.com](mailto:infocomp@eu.sumida.com)

### Taipei

Tel.+886-2-8751-2737  
FAX.+886-2-8751-2738  
[sales@tw.sumida.com](mailto:sales@tw.sumida.com)

### San Jose

Tel.+1-408-321-9660  
FAX.+1-408-321-9308  
[sales@us.sumida.com](mailto:sales@us.sumida.com)

## X-ON Electronics

Largest Supplier of Electrical and Electronic Components

*Click to view similar products for [Power Inductors - SMD category](#):*

*Click to view products by [Sumida manufacturer](#):*

Other Similar products are found below :

[SPD62R-472M](#) [LLQPB201214T1R0M](#) [LLXND3030QKT470MNG](#) [LLQPB160807T4R7M](#) [LLAPB2016KKTR33M](#)  
[LBXND4040TKL330MDG](#) [LLXNE3030KKT4R7MN](#) [LSQEA201212T100M](#) [IHLP5050CEER4R7M06](#) [LVS505020-1R0T-N](#) [LVS505040-1R2T-N](#) [LVS606020-1R5M-N](#) [LVS606028-6R8M-N](#) [LVS606045-102M-N](#) [LVS606045-150M-N](#) [LVS606045-1R8M-N](#) [LVS606045-6R8M-N](#) [LVS808040-2R0M-N](#) [LVS808040-330M-N](#) [LVS808040-4R7M-N](#) [MHCI06030-R56M-R8](#) [SCD0403T-470M-N](#) [SCD0403T-6R8K-N](#) [SCD0504T-101M-N](#) [SCD0504T-120M-N](#) [SCD0504T-221M-N](#) [SCD0504T-470M-N](#) [SCD0504T-471M-N](#) [SCD0705T-180M-N](#) [SCD0705T-221M-N](#) [SCD0705T-470M-N](#) [SCD1005T-101M-N](#) [SCD1005T-221M-N](#) [SCD1005T-470M-N](#) [SSL1306T-101M-N](#) [LQB15NNR27K10D](#) [201610CDMCDDS-R47MC](#) [201610CDMCDDS-1R0MC](#) [201610CDMCDDS-R68MC](#) [LSQPB201210T220M](#) [LBCNF2012KKTR24MA](#) [LSQEA201212T220K](#) [LSENC2016KKT1R0M](#) [LSBHB1608KKT2R2MG](#) [LSQPB160807T2R2M](#) [LSQEA201212T101K](#) [LCXND4040MKL4R7MDG](#) [DEM8045Z-5R6N=P3](#) [LCXNH8080YKL101MJG](#) [LSCNA2012KKT1R0MA](#)