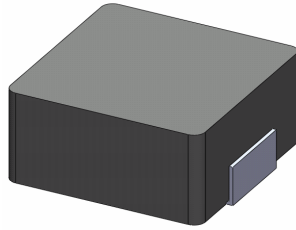


SMD Power Inductor 0530CDMCC/DS



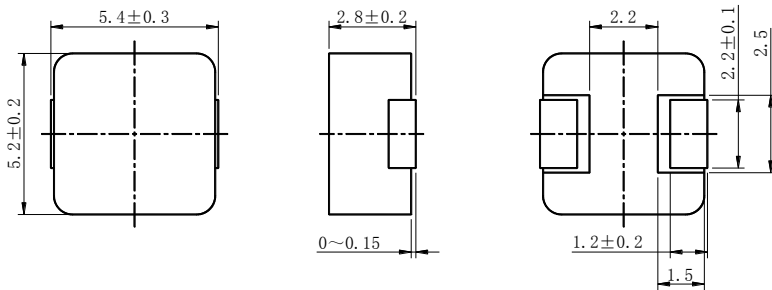
Halogen
Free



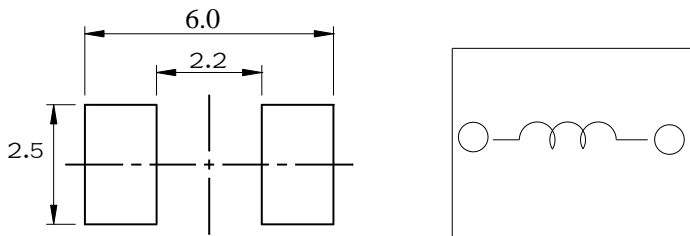
Description

- Metal compound molding type construction.
- Magnetically shielded.
- Low audible core noise.
- Suitable for large current.
- L × W × H: 5.7 × 5.4 × 3.0mm Max.
- Product weight: 0.43g (Ref.)
- Moisture Sensitivity Level: 1
- RoHS compliance.
- Halogen Free available.

Dimension - [mm]



Land pattern and Schematics - [mm]



Environmental Data

- Operating temperature range: $-55^{\circ}\text{C} \sim +125^{\circ}\text{C}$ (including coil's self temperature rise)
- Storage temperature range: $-55^{\circ}\text{C} \sim +125^{\circ}\text{C}$
- Solder reflow temperature: 260°C peak.

Packaging

- Carrier tape and reel packaging.
- 2000pcs/Reel.

Applications

- Ideally used in notebook, ultrabook, tablet PC, LCD display, Server application.
- High current, POL converters.
- Low profile, high current power supplies.
- Battery powered devices.
- DC/DC converters in distributed power systems.



Electrical Characteristics

| Part No. | Stamp | Inductance (μ H) [Within] ※1 | D.C.R (m Ω) (at 25°C) Max.(Typ.) | Saturation Current (A)※2 Max.(Typ.) (at 25°C) | Temperature rise current (A)※3 Typ. |
|-------------------|-------|--|---|---|--|
| 0530CDMCCDS-R10MC | R10 | 0.10 \pm 20% | 2.8(2.4) | 24.5(29.0) | 21.0 |
| 0530CDMCCDS-R20MC | R20 | 0.20 \pm 20% | 3.9(3.5) | 18.7(22.0) | 14.0 |
| 0530CDMCCDS-R33MC | R33 | 0.33 \pm 20% | 5.0(4.4) | 16.0(19.0) | 13.5 |
| 0530CDMCCDS-R47MC | R47 | 0.47 \pm 20% | 8.5(7.4) | 15.3(18.0) | 10.5 |
| 0530CDMCCDS-R68MC | R68 | 0.68 \pm 20% | 12.0(11.0) | 11.9(14.0) | 9.6 |
| 0530CDMCCDS-1R0MC | 1R0 | 1.0 \pm 20% | 14.0(13.0) | 10.2(12.0) | 9.4 |
| 0530CDMCCDS-1R2MC | 1R2 | 1.2 \pm 20% | 16.0(15.0) | 11.5(13.5) | 8.7 |
| 0530CDMCCDS-1R5MC | 1R5 | 1.5 \pm 20% | 25.0(20.0) | 11.1(13.0) | 7.2 |
| 0530CDMCCDS-2R2MC | 2R2 | 2.2 \pm 20% | 29.0(25.0) | 7.6(9.0) | 5.8 |
| 0530CDMCCDS-3R3MC | 3R3 | 3.3 \pm 20% | 38.0(32.0) | 6.8(8.0) | 5.1 |
| 0530CDMCCDS-4R7MC | 4R7 | 4.7 \pm 20% | 60.0(50.0) | 5.1(6.0) | 3.8 |
| 0530CDMCCDS-5R6MC | 5R6 | 5.6 \pm 20% | 54.0(47.0) | 3.6(4.3) | 4.0 |
| 0530CDMCCDS-6R8MC | 6R8 | 6.8 \pm 20% | 90.0(75.0) | 3.8(4.5) | 3.3 |
| 0530CDMCCDS-100MC | 100 | 10 \pm 20% | 125(110) | 3.4(4.0) | 2.8 |

※1 Measuring frequency Inductance at 100kHz ,1.0V

※2 Saturation current: The value of DC current when the inductance is over 70% of its initial value. (at 25°C)

※3 Temperature rise current: The actual value of DC current when temperature of coil rise is

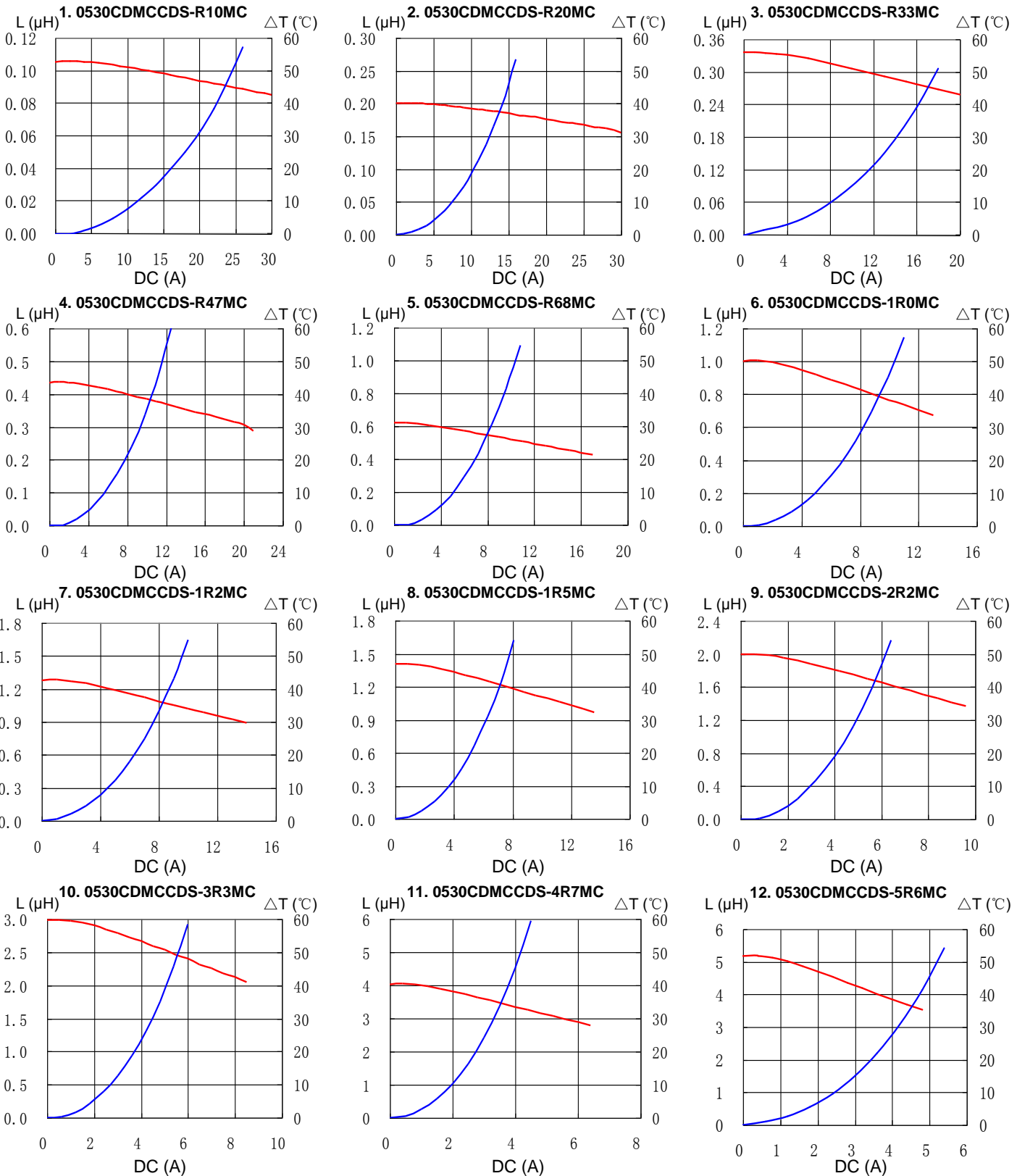
$\Delta T=40^{\circ}\text{C}$ ($T_a=25^{\circ}\text{C}$) Board conditions: FR4, Copper=70 μm , four-layer PWB, $t=1.6\text{mm}$.

SMD Power Inductor 0530CDMCC/DS



Saturation Current & Temperature Rise Graph

— L (20°C) — ΔT

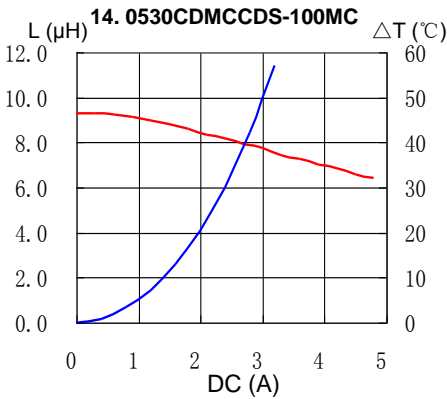
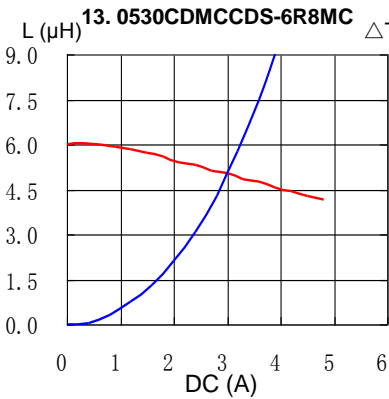


SMD Power Inductor 0530CDMCC/DS



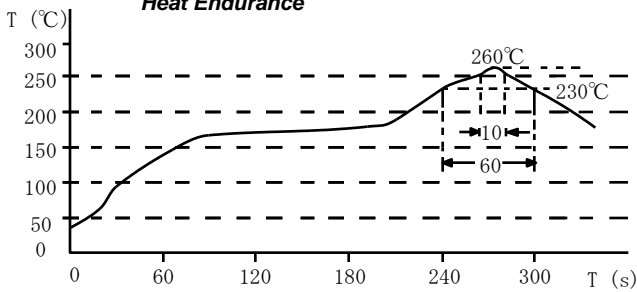
Saturation Current & Temperature Rise Graph

— L (20°C) — ΔT

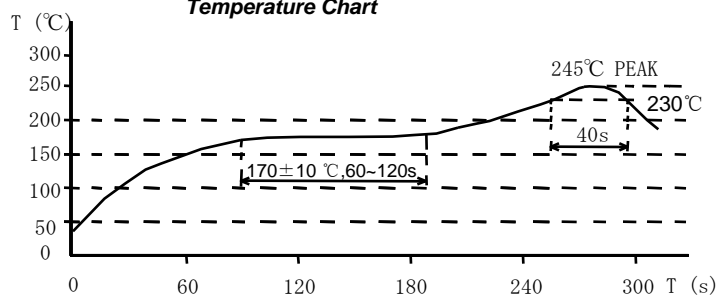


Solder Reflow Condition

Heat Endurance



Temperature Chart



Please refer to the sales offices on our website - <http://www.sumida.com>

Hong Kong

Tel.+852-2880-6781
FAX.+852-2565-9600
sales@hk.sumida.com

Saitama(Japan)

Tel.+81-48-691-7300
FAX.+81-48-691-7340
sales@jp.sumida.com

Chicago

Tel.+1-847-545-6700
FAX. +1-847-545-6720
sales@us.sumida.com

Shanghai

Tel.+86-21-5836-3299
FAX.+86-21-5836-3266
shanghai.sales@cn.sumida.com

Seoul

Tel.+82-2-6237-0777
FAX.+82-2-6237-0778
sales@kr.sumida.com

Obernzell

Tel.+49-8591-937-0
FAX. +49-8591-937-103
contact@eu.sumida.com

Shenzhen

Tel.+86-755-8291-0228
FAX.+86-755-8291-0338
shenzhen.sales@cn.sumida.com

Singapore

Tel.+65-6296-3388
FAX.+65-6841-4426
sales@sg.sumida.com

Neumarkt

Tel.+49-9181-4509-110
FAX. +49-9181-4509-310
infocomp@eu.sumida.com

Taipei

Tel.+886-2-8751-2737
FAX.+886-2-8751-2738
sales@tw.sumida.com

San Jose

Tel.+1-408-321-9660
FAX.+1-408-321-9308
sales@us.sumida.com

X-ON Electronics

Largest Supplier of Electrical and Electronic Components

Click to view similar products for [Power Inductors - SMD category](#):

Click to view products by [Sumida manufacturer](#):

Other Similar products are found below :

[SPD62R-472M](#) [LLQPB201214T1R0M](#) [LLXND3030QKT470MNG](#) [LLQPB160807T4R7M](#) [LLAPB2016KKTR33M](#)
[LBXND4040TKL330MDG](#) [LLXNE3030KKT4R7MN](#) [LSQEA201212T100M](#) [IHLP5050CEER4R7M06](#) [LVS505020-1R0T-N](#) [LVS505040-1R2T-N](#) [LVS606020-1R5M-N](#) [LVS606028-6R8M-N](#) [LVS606045-102M-N](#) [LVS606045-150M-N](#) [LVS606045-1R8M-N](#) [LVS606045-6R8M-N](#) [LVS808040-2R0M-N](#) [LVS808040-330M-N](#) [LVS808040-4R7M-N](#) [MHCI06030-R56M-R8](#) [SCD0403T-470M-N](#) [SCD0403T-6R8K-N](#) [SCD0504T-101M-N](#) [SCD0504T-120M-N](#) [SCD0504T-221M-N](#) [SCD0504T-470M-N](#) [SCD0504T-471M-N](#) [SCD0705T-180M-N](#) [SCD0705T-221M-N](#) [SCD0705T-470M-N](#) [SCD1005T-101M-N](#) [SCD1005T-221M-N](#) [SCD1005T-470M-N](#) [SSL1306T-101M-N](#) [LQB15NNR27K10D](#) [201610CDMCDDS-R47MC](#) [201610CDMCDDS-1R0MC](#) [201610CDMCDDS-R68MC](#) [LSQPB201210T220M](#) [LBCNF2012KKTR24MA](#) [LSQEA201212T220K](#) [LSENC2016KKT1R0M](#) [LSBHB1608KKT2R2MG](#) [LSQPB160807T2R2M](#) [LSQEA201212T101K](#) [LCXND4040MKL4R7MDG](#) [DEM8045Z-5R6N=P3](#) [LCXNH8080YKL101MJG](#) [LSCNA2012KKT1R0MA](#)