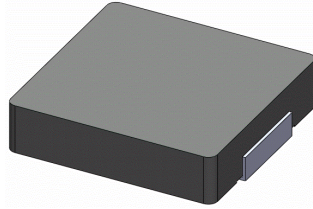


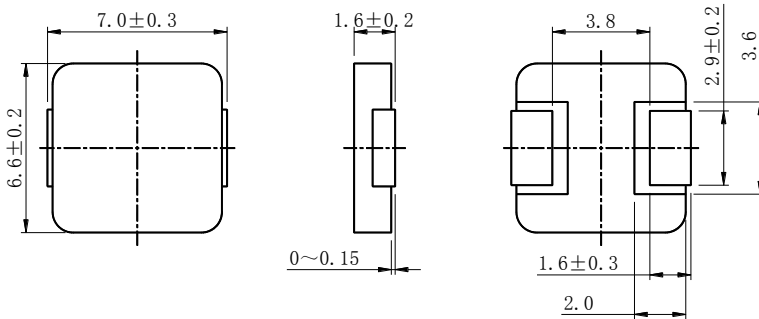
SMD Power Inductor 0618CDMCC/DS



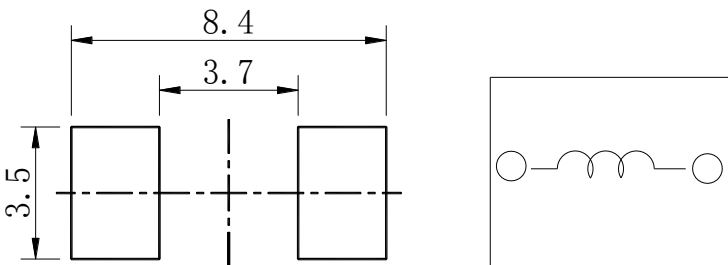
Halogen Free



Dimension - [mm]



Land pattern and Schematics - [mm]



Description

- Metal compound molding type construction.
- Magnetically shielded.
- Low audible core noise.
- Suitable for large current.
- L × W × H: 7.3 × 6.8 × 1.8mm Max.
- Product weight:0.45g (Ref.)
- Moisture Sensitivity Level: 1
- RoHS compliance.
- Halogen Free available.

Environmental Data

- Operating temperature range: -55°C ~ +125°C (including coil's self temperature rise)
- Storage temperature range: -55°C ~ +125°C
- Solder reflow temperature: 260 °C peak.

Packaging

- Carrier tape and reel packaging.
- 1500pcs/Reel.

Applications

- Ideally used in notebook, ultrabook, tablet PC, LCD display, Server application.
- High current, POL converters.
- Low profile, high current power supplies.
- Battery powered devices.
- DC/DC converters in distributed power systems.



Electrical Characteristics

Part No.	Stamp	Inductance (μH) [Within] ※1	D.C.R ($\text{m}\Omega$) at 25°C Max.(Typ.)	Saturation Current (A)※2 Max.(Typ.) (at 25°C)	Temperature rise current (A)※3 Typ.
0618CDMCCDS-R10MC	R10	$0.10 \pm 20\%$	2.4(2.05)	34.0(40.0)	25.0
0618CDMCCDS-R12MC	R12	$0.12 \pm 20\%$	2.4(2.05)	30.0(36.0)	25.0
0618CDMCCDS-R15MC	R15	$0.15 \pm 20\%$	2.4(2.05)	27.0(32.0)	25.0
0618CDMCCDS-R22MC	R22	$0.22 \pm 20\%$	3.6(3.1)	23.0(27.0)	18.0
0618CDMCCDS-R68MC	R68	$0.68 \pm 20\%$	12.0(10.0)	14.4(17.0)	9.8
0618CDMCCDS-1R0MC	1R0	$1.0 \pm 20\%$	16.0(13.0)	12.1(14.3)	8.3
0618CDMCCDS-1R5MC	1R5	$1.5 \pm 20\%$	24.0(20.0)	10.3(12.0)	7.0
0618CDMCCDS-2R2MC	2R2	$2.2 \pm 20\%$	33.6(28.0)	9.2(10.8)	6.0
0618CDMCCDS-3R3MC	3R3	$3.3 \pm 20\%$	50.0(43.0)	6.8(8.0)	4.7
0618CDMCCDS-4R7MC	4R7	$4.7 \pm 20\%$	62.0(56.0)	5.3(6.3)	4.0
0618CDMCCDS-6R8MC	6R8	$6.8 \pm 20\%$	110.0(101.0)	4.3(5.0)	3.0
0618CDMCCDS-8R2MC	8R2	$8.2 \pm 20\%$	142.0(123.0)	4.0(4.7)	2.6
0618CDMCCDS-100MC	100	$10.0 \pm 20\%$	165.0(150.0)	3.4(4.0)	2.3

※1 Measuring frequency Inductance at 100kHz ,1.0V

※2 Saturation current: The value of DC current when the inductance is over 70% of its initial value. (at 25°C)

※3 Temperature rise current: The actual value of DC current when temperature of coil rise is

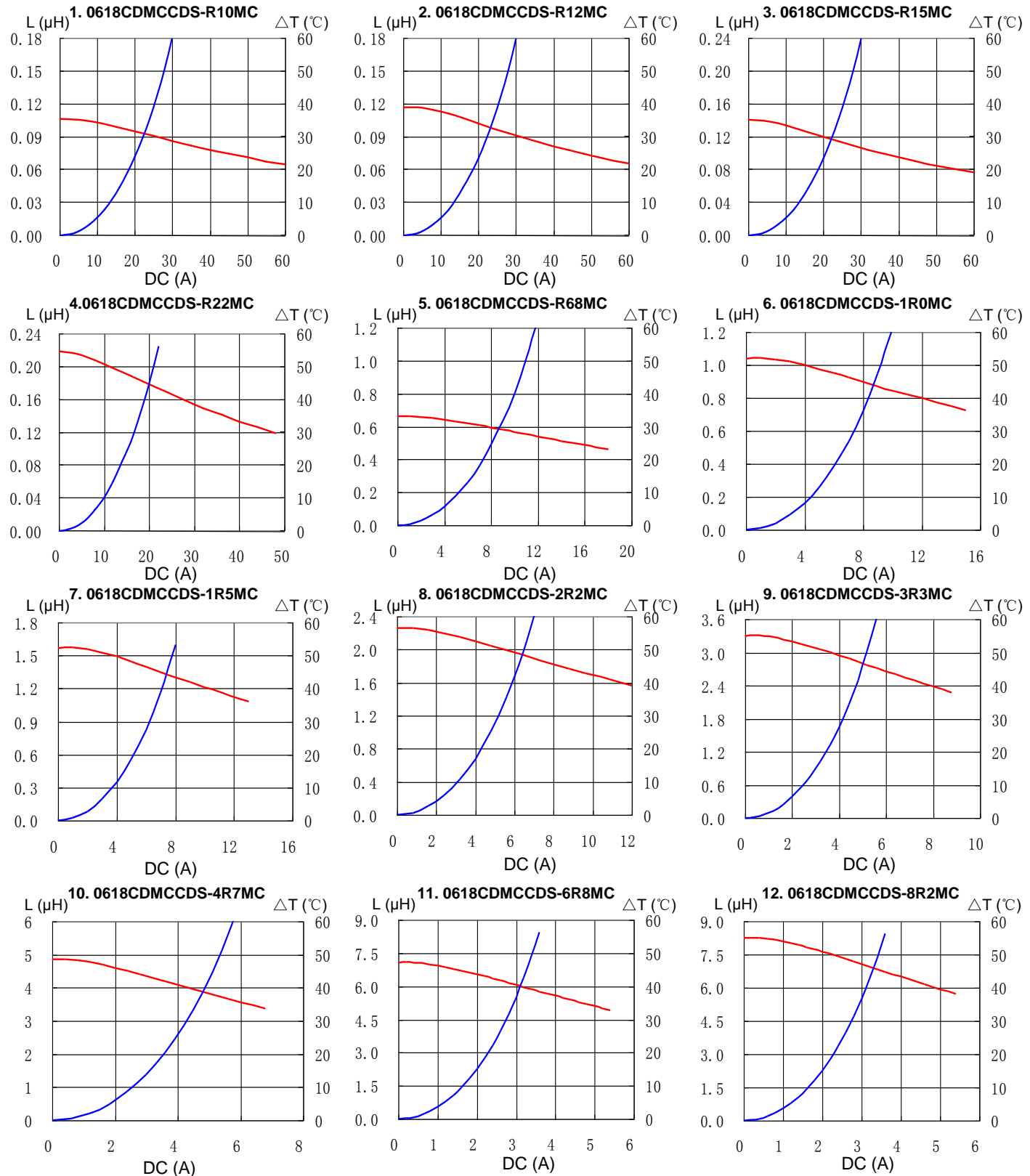
$\Delta T=40^\circ\text{C}$ ($T_a=25^\circ\text{C}$) Board conditions: FR4, Copper=70 μm ,four-layer PWB, t=1.6mm.

SMD Power Inductor 0618CDMCC/DS



Saturation Current & Temperature Rise Graph

— L (20°C) — ΔT

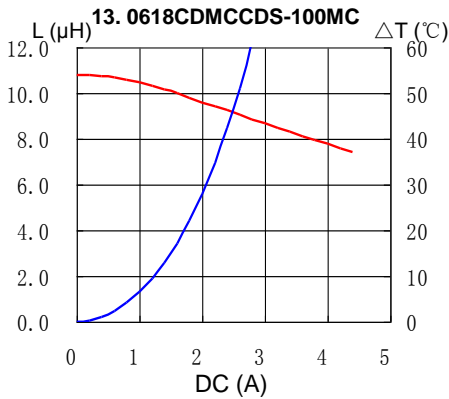


SMD Power Inductor 0618CDMCC/DS



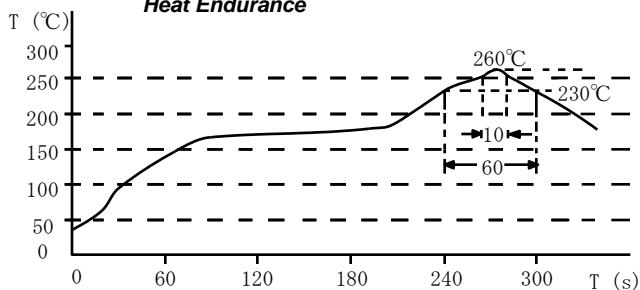
Saturation Current & Temperature Rise Graph

— L (20°C) — ΔT

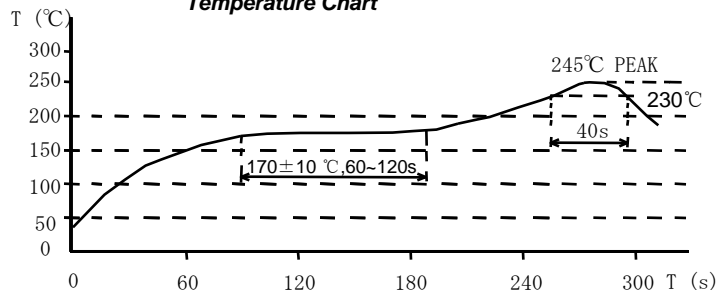


Solder Reflow Condition

Heat Endurance



Temperature Chart



Please refer to the sales offices on our website - <http://www.sumida.com>

Hong Kong

Tel.+852-2880-6781
FAX.+852-2565-9600
sales@hk.sumida.com

Saitama(Japan)

Tel.+81-48-691-7300
FAX.+81-48-691-7340
sales@jp.sumida.com

Chicago

Tel.+1-847-545-6700
FAX. +1-847-545-6720
sales@us.sumida.com

Shanghai

Tel.+86-21-5836-3299
FAX.+86-21-5836-3266
shanghai.sales@cn.sumida.com

Seoul

Tel.+82-2-6237-0777
FAX.+82-2-6237-0778
sales@kr.sumida.com

Obernzell

Tel.+49-8591-937-0
FAX. +49-8591-937-103
contact@eu.sumida.com

Shenzhen

Tel.+86-755-8291-0228
FAX.+86-755-8291-0338
shenzhen.sales@cn.sumida.com

Singapore

Tel.+65-6296-3388
FAX.+65-6841-4426
sales@sg.sumida.com

Neumarkt

Tel.+49-9181-4509-110
FAX. +49-9181-4509-310
infocomp@eu.sumida.com

Taipei

Tel.+886-2-8751-2737
FAX.+886-2-8751-2738
sales@tw.sumida.com

San Jose

Tel.+1-408-321-9660
FAX.+1-408-321-9308
sales@us.sumida.com

X-ON Electronics

Largest Supplier of Electrical and Electronic Components

Click to view similar products for [Fixed Inductors](#) category:

Click to view products by [Sumida](#) manufacturer:

Other Similar products are found below :

[CR43NP-680KC](#) [CR54NP-820KC](#) [CR54NP-8R5MC](#) [CTX32CT-100](#) [70F224AI](#) [MGDQ4-00004-P](#) [MHL1ECTTP18NJ](#) [MHL1JCTTD12NJ](#)
[PE-51506NL](#) [PE-53601NL](#) [PE-53602NL](#) [PE-53630NL](#) [PE-53824SNLT](#) [PE-92100NL](#) [PG0434.801NLT](#) [PG0936.113NLT](#) [9310-16](#) [PM06-2N7](#) [PM06-39NJ](#) [A01TK](#) [1206CS-471XJ](#) [HC2-2R2TR](#) [HC2LP-R47-R](#) [HC3-2R2-R](#) [1206CS-151XG](#) [RCH664NP-140L](#) [RCH664NP-4R7M](#)
[RCH8011NP-221L](#) [RCP1317NP-332L](#) [RCP1317NP-391L](#) [RCR1010NP-470M](#) [RCR110DNP-331L](#) [DH2280-4R7M](#) [DS1608C-106](#) [ASPI-4020HI-R10M-T](#) [B10TJ](#) [B82477P4333M](#) [B82498B3101J000](#) [B82498B3680J000](#) [ELJ-RE27NJF2](#) [1812CS-153XJ](#) [1812CS-183XJ](#) [1812CS-223XJ](#) [1812LS-104XJ](#) [1812LS-105XJ](#) [1812LS-124XJ](#) [1812LS-154XJ](#) [1812LS-223XJ](#) [1812LS-224XJ](#) [1812LS-563XJ](#)