

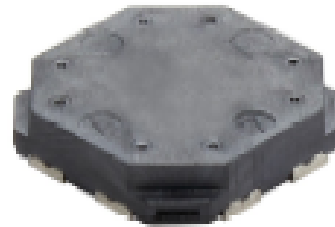
LF receiver antenna

CAS13D31



Outline

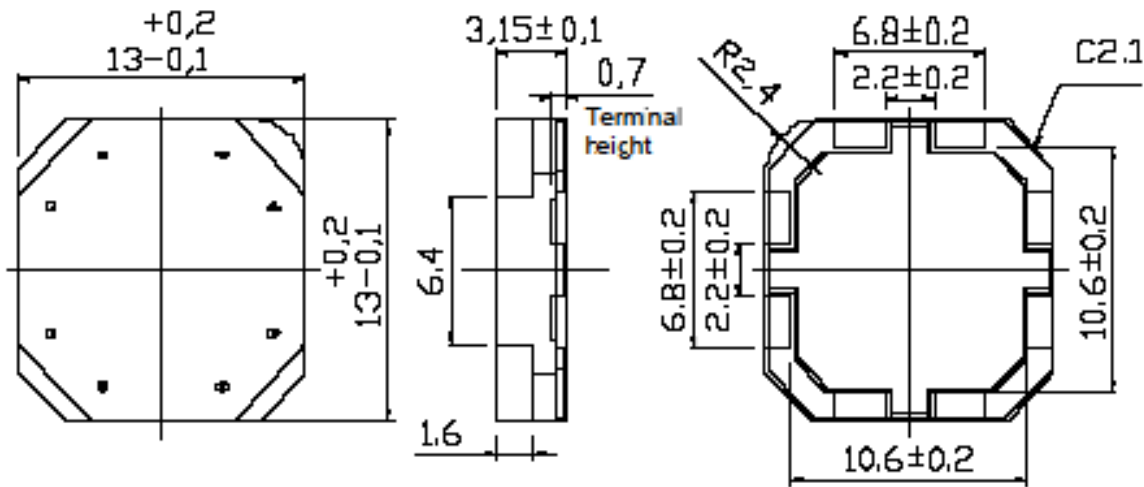
- Compact LF receiver antenna (3D).
- Covered by over-molding.
- High sensitivity and reliability.
- L × W × H: 13.2 × 13.2 × 3.25 mm Max.
- Product weight: 1.3g (ref.)
- Operating temperature range: -40°C~ +85°C
- Storage temperature range: -40°C~ +85°C
- RoHS compliance



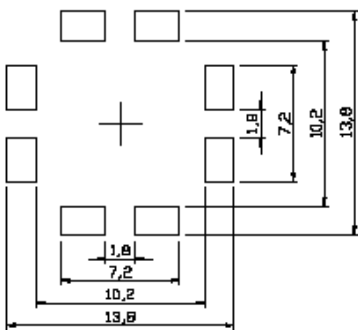
Application

- PEPS, Smart key system. Security system..

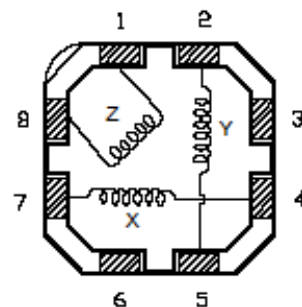
Dimensions (Unit : mm)



Suggest PCB layout (mm)



Schematic diagram (Bottom view)



Note: This specification is subject to change without notice. Please contact your nearest sales office for updated information when placing an order.

LF receiver antenna

CAS13D31



Electric characteristic

Part number	Item	4-7 (X-axis)	2-5 (Y-axis)	1-8 (Z-axis)
CAS13D31-232	Inductance	2.36 mH \pm 4%	2.36 mH \pm 4%	3.4 mH \pm 4%
	Unloaded Q	Min.35	Min.35	Min.30
	S.R.F	2MHz Min.	2MHz Min.	700kHz Min.
CAS13D31-472	Inductance	4.7mH \pm 4%	4.7mH \pm 4%	7.2mH \pm 4%
	Unloaded Q	Min.35	Min.35	Min.30
	S.R.F	1.5MHz Min.	1.5MHz Min.	500kHz Min.
CAS13D31-722	Inductance	7.2mH \pm 4%	7.2mH \pm 4%	10.6mH \pm 4%
	Unloaded Q	Min.35	Min.35	Min.30
	S.R.F	1MHz Min.	1MHz Min.	400kHz Min.

* Measuring conditions : Inductance and Q at 125kHz,1V



For sales office information, please [click here](#) to visit our website.

X-ON Electronics

Largest Supplier of Electrical and Electronic Components

Click to view similar products for [Antennas](#) category:

Click to view products by [Sumida](#) manufacturer:

Other Similar products are found below :

[930-033-R](#) [EXE902SM](#) [APAMPG-117](#) [108-00014-50](#) [66089-2406](#) [A09-F8NF-M](#) [A09-F5NF-M](#) [RGFRA1903041A1T](#) [108-00016-050](#)
[SIMNA-868](#) [SIMNA-915](#) [SIMNA-433](#) [W1049B090](#) [TRABT1560](#) [WTL2449CQ1-FRSMM](#) [CPL9C](#) [0600-00060](#) [Y4503](#) [PAL90209H-FNF](#)
[GD53-25](#) [C37](#) [MAF94051](#) [S9025PLSMF](#) [QWFTB120](#) [MAF94300](#) [FG4403](#) [MIKROE-2393](#) [GPSCPMM00](#) [ANTDOM-05-01-WPM](#) [ANT-](#)
[WP868SMA-Y](#) [EXW30BNX](#) [RAD-ISM-2459-ANT-FOOD-6-0-](#) [S4908WBFNM](#) [GD57-21](#) [B4305CN](#) [108-20131-010](#) [108-00032-010](#) [C27S](#)
[CBNC58](#) [EXH160MXI](#) [EXH160SFK](#) [MD10-004](#) [EXC902SM](#) [CB27](#) [ABFT](#) [BB4502NR](#) [B4502N](#) [S4908WBFNF](#) [NMOCAPB](#) [60210](#)