

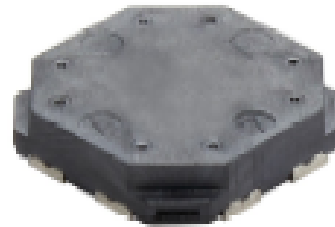
# LF receiver antenna

CAS13D31



## Outline

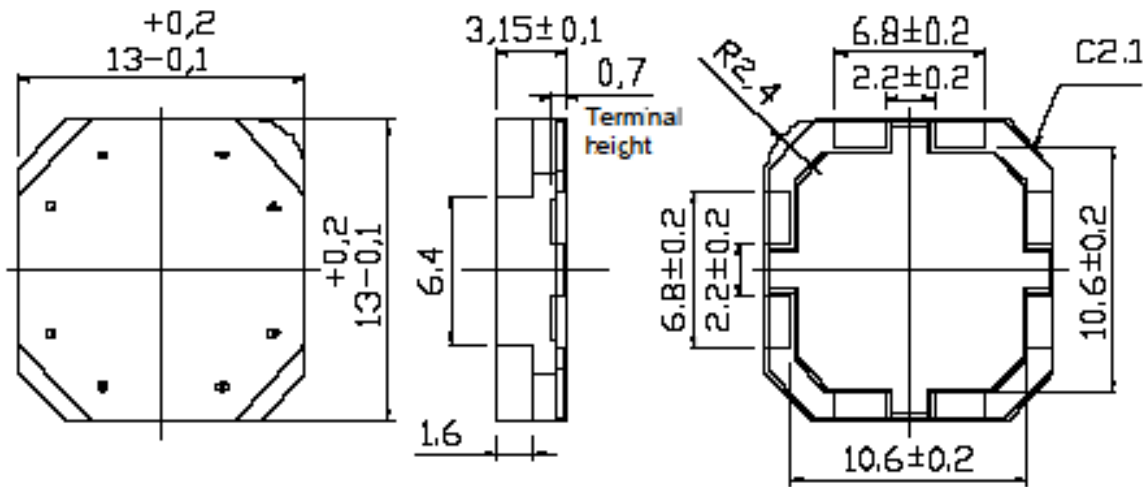
- Compact LF receiver antenna (3D).
- Covered by over-molding.
- High sensitivity and reliability.
- L × W × H: 13.2 × 13.2 × 3.25 mm Max.
- Product weight: 1.3g (ref.)
- Operating temperature range: -40°C~ +85°C
- Storage temperature range: -40°C~ +85°C
- RoHS compliance



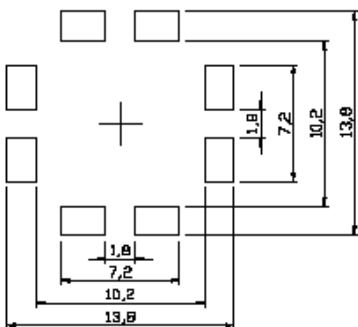
## Application

- PEPS, Smart key system. Security system..

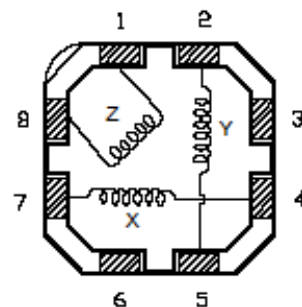
## Dimensions (Unit : mm)



## Suggest PCB layout (mm)



## Schematic diagram (Bottom view)



# LF receiver antenna



CAS13D31



## Electric characteristic

Part number	Item	4-7 ( X-axis )	2-5 ( Y-axis )	1-8 ( Z-axis )
CAS13D31-232	Inductance	2.36 mH $\pm$ 4%	2.36 mH $\pm$ 4%	3.4 mH $\pm$ 4%
	Unloaded Q	Min.35	Min.35	Min.30
	S.R.F	2MHz Min.	2MHz Min.	700kHz Min.
CAS13D31-472	Inductance	4.7mH $\pm$ 4%	4.7mH $\pm$ 4%	7.2mH $\pm$ 4%
	Unloaded Q	Min.35	Min.35	Min.30
	S.R.F	1.5MHz Min.	1.5MHz Min.	500kHz Min.
CAS13D31-722	Inductance	7.2mH $\pm$ 4%	7.2mH $\pm$ 4%	10.6mH $\pm$ 4%
	Unloaded Q	Min.35	Min.35	Min.30
	S.R.F	1MHz Min.	1MHz Min.	400kHz Min.

\* Measuring conditions : Inductance and Q at 125kHz,1V



For sales office information, please [click here](#) to visit our website.

## X-ON Electronics

Largest Supplier of Electrical and Electronic Components

*Click to view similar products for [Antennas](#) category:*

*Click to view products by [Sumida](#) manufacturer:*

Other Similar products are found below :

[GAN30084EU](#) [930-033-R](#) [1513563-1](#) [EXE902SM](#) [APAMPG-117](#) [MAF94383](#) [W6102B0100](#) [108-00014-50](#) [66089-2406](#) [SPDA17RP918](#)  
[A09-F5NF-M](#) [RGFRA1903041A1T](#) [108-00016-050](#) [W3921B0100](#) [SIMNA-868](#) [SIMNA-915](#) [SIMNA-433](#) [W1049B090](#) [TRABT1560](#) [A75-](#)  
[001](#) [W3118A](#) [WTL2449CQ1-FRSMM](#) [CPL9C](#) [0600-00060](#) [GD5W-28P-NF](#) [MA9-7N](#) [GD53-25](#) [C37](#) [MAF94051](#) [FRX380](#) [MA9-5N](#)  
[B1322NR](#) [QWFTB120](#) [MAF94271](#) [MAF94300](#) [GPSMB301](#) [FG4403](#) [PSQ24495-91RSM](#) [5200232](#) [MIKROE-2393](#) [DA5-32RADOME](#)  
[5200227](#) [GPSCPMM00](#) [W1049B030](#) [SPDA17RP918](#) [GPSCP00](#) [AN 303](#) [ANTDOM-05-01-WPM](#) [EXW30BNX](#)  
[OSCAR1A/5M/SMAM/S/S/31](#)