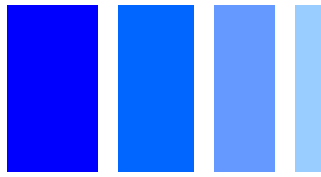


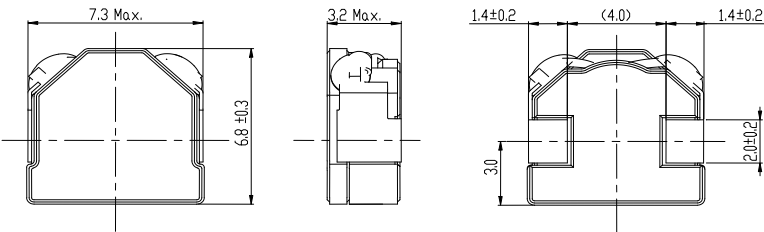
SMD Power Inductor CDEIR6D31F



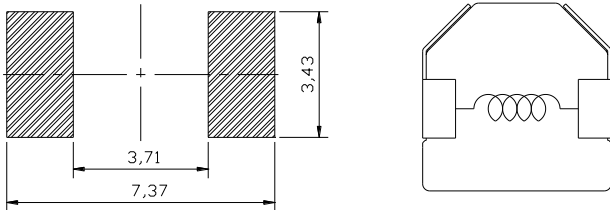
Description

- Ferrite core construction.
- Magnetically shielded.
- L × W × H: 7.3 × 7.1 × 3.2 mm Max.
- Product weight: 0.53g(Ref.)
- Moisture Sensitivity Level: 1
- RoHS compliance.

Dimension - [mm]



Land pattern and Schematics - [mm]



Environmental Data

- Operating temperature range: -40°C ~ +105°C (including coil's self temperature rise)
- Storage temperature range: -40°C ~ +105°C
- Solder reflow temperature: 260 °C peak.

Packaging

- Carrier tape and reel packaging.
- 13.0" diameter reel
- 1500pcs per reel

Applications

- Ideally used in HDD, Notebook and Mobile computer etc.

Electrical Characteristics

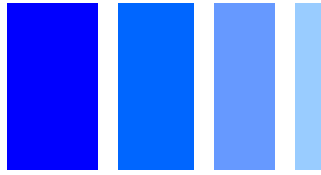
Part No.	Stamp	Inductance (μH) [Within] ※1	D.C.R.(mΩ) [Max.] (Typ.) (at 20°C)	saturation current (A) ※2	Temperature rise current (A) ※3
CDEIR6D31FNP-1R0NC	1R0	1.0 ± 30%	8.8(7.3)	7.7(9.7)	7.4(8.5)
CDEIR6D31FNP-1R5NC	1R5	1.5 ± 30%	9.6(8.0)	6.8(8.5)	6.8(7.9)
CDEIR6D31FNP-2R2MC	2R2	2.2 ± 20%	12(10)	6.0(7.5)	6.5(7.4)
CDEIR6D31FNP-3R3MC	3R3	3.3 ± 20%	19(15)	4.8(6.0)	5.5(6.3)
CDEIR6D31FNP-4R7MC	4R7	4.7 ± 20%	26(21)	4.0(5.0)	4.7(5.4)
CDEIR6D31FNP-5R6MC	5R6	5.6 ± 20%	29(23)	3.5(4.4)	4.4(5.0)
CDEIR6D31FNP-6R8MC	6R8	6.8 ± 20%	40(32)	3.0(3.8)	3.5(4.0)
CDEIR6D31FNP-8R2MC	8R2	8.2 ± 20%	43(34)	2.8(3.5)	3.6(4.1)
CDEIR6D31FNP-100MC	100	10.0 ± 20%	66(53)	2.6(3.2)	2.6(2.9)
CDEIR6D31FNP-120MC	120	12.0 ± 20%	76(61)	2.4(3.0)	2.2(2.5)

※1. Measuring condition: at 100kHz.

※2. Saturation current: The value of D.C. current when the inductance decreases to 70% of its nominal value.

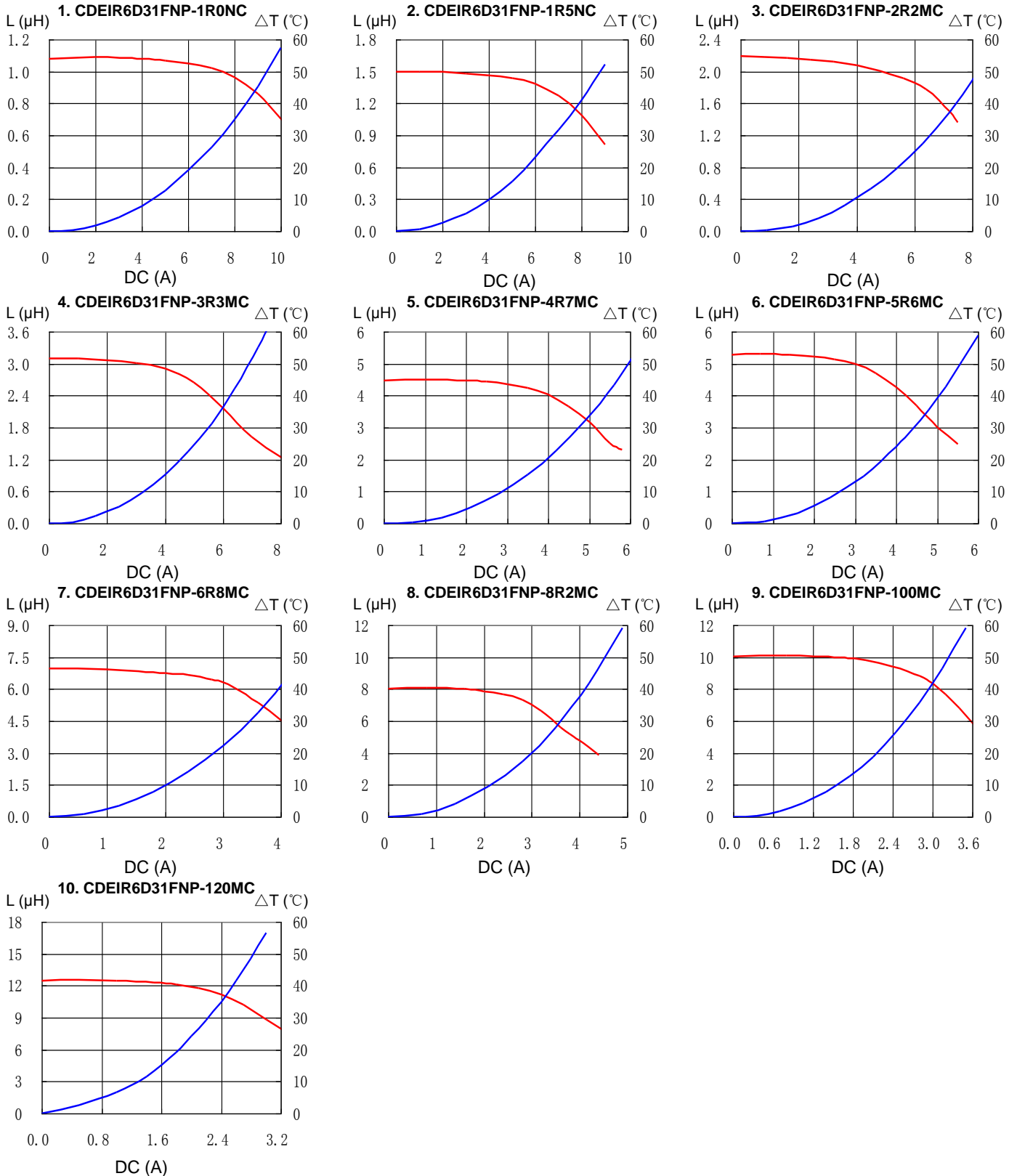
※3. Temperature rise current: The value of D.C. current when the temperature rise is Δt=40°C (Ta=20°C).

SMD Power Inductor CDEIR6D31F

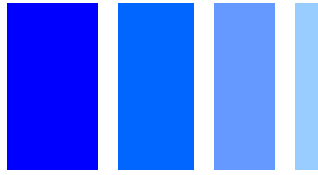


Saturation Current & Temperature Rise Graph

— L (20°C) — ΔT

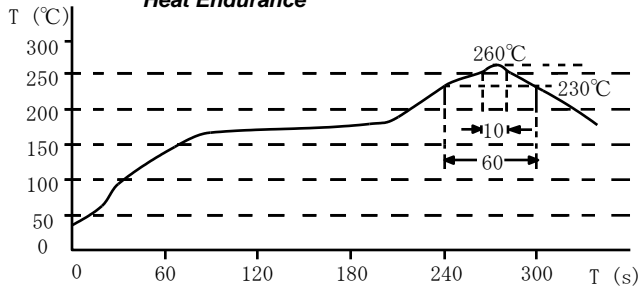


SMD Power Inductor CDEIR6D31F

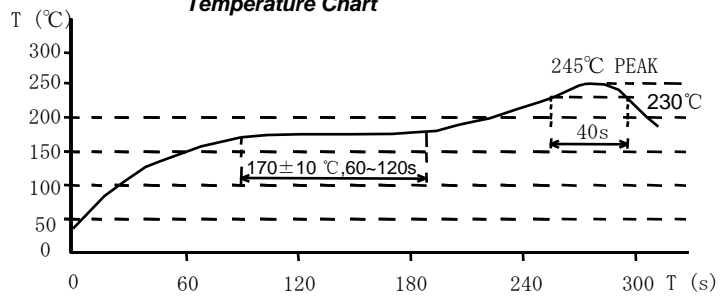


Solder Reflow Condition

Heat Endurance



Temperature Chart



Please refer to the sales offices on our website - <http://www.sumida.com>

Hong Kong

Tel.+852-2880-6781
FAX.+852-2565-9600
sales@hk.sumida.com

Saitama(Japan)

Tel.+81-48-691-7300
FAX.+81-48-691-7340
sales@jp.sumida.com

Chicago

Tel.+1-847-545-6700
FAX. +1-847-545-6720
sales@us.sumida.com

Shanghai

Tel.+86-21-5836-3299
FAX.+86-21-5836-3266
shanghai.sales@cn.sumida.com

Seoul

Tel.+82-2-6237-0777
FAX.+82-2-6237-0778
sales@kr.sumida.com

Obernzell

Tel.+49-8591-937-0
FAX. +49-8591-937-103
contact@eu.sumida.com

Shenzhen

Tel.+86-755-8291-0228
FAX.+86-755-8291-0338
shenzhen.sales@cn.sumida.com

Singapore

Tel.+65-6296-3388
FAX.+65-6841-4426
sales@sg.sumida.com

Neumarkt

Tel.+49-9181-4509-110
FAX. +49-9181-4509-310
infocomp@eu.sumida.com

Taipei

Tel.+886-2-8751-2737
FAX.+886-2-8751-2738
sales@tw.sumida.com

San Jose

Tel.+1-408-321-9660
FAX.+1-408-321-9308
sales@us.sumida.com

X-ON Electronics

Largest Supplier of Electrical and Electronic Components

Click to view similar products for [Fixed Inductors](#) category:

Click to view products by [Sumida](#) manufacturer:

Other Similar products are found below :

[CR43NP-680KC](#) [CR54NP-820KC](#) [CR54NP-8R5MC](#) [CTX32CT-100](#) [70F224AI](#) [MGDQ4-00004-P](#) [MHL1ECTTP18NJ](#) [MHL1JCTTD12NJ](#)
[PE-51506NL](#) [PE-53601NL](#) [PE-53602NL](#) [PE-53630NL](#) [PE-53824SNLT](#) [PE-62892NL](#) [PE-92100NL](#) [PG0434.801NLT](#) [PG0936.113NLT](#)
[9310-16](#) [PM06-2N7](#) [PM06-39NJ](#) [A01TK](#) [1206CS-471XJ](#) [HC2-2R2TR](#) [HC2LP-R47-R](#) [HC3-2R2-R](#) [1206CS-151XG](#) [RCH664NP-140L](#)
[RCH664NP-4R7M](#) [RCH8011NP-221L](#) [RCP1317NP-332L](#) [RCP1317NP-391L](#) [RCR1010NP-470M](#) [RCR110DNP-331L](#) [DH2280-4R7M](#)
[DS1608C-106](#) [ASPI-4020HI-R10M-T](#) [B10TJ](#) [B82477P4333M](#) [B82498B3101J000](#) [B82498B3680J000](#) [ELJ-RE27NJF2](#) [1812CS-153XJ](#)
[1812CS-183XJ](#) [1812CS-223XJ](#) [1812LS-104XJ](#) [1812LS-105XJ](#) [1812LS-124XJ](#) [1812LS-154XJ](#) [1812LS-223XJ](#) [1812LS-224XJ](#)