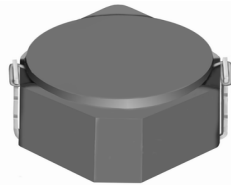


SMD Power Inductor CDRH3D23



Description

- Ferrite drum core construction.
- Magnetically shielded.
- L × W × H: 3.92 × 3.92 × 2.5 mm Max.
- Product weight: 112mg(Ref.)
- Moisture Sensitivity Level: 1
- RoHS compliance.

Environmental Data

- Operating temperature range: -40°C~+105°C (including coil's self temperature rise)
- Storage temperature range: -40°C~+105°C
- Solder reflow temperature: 260 °C peak.

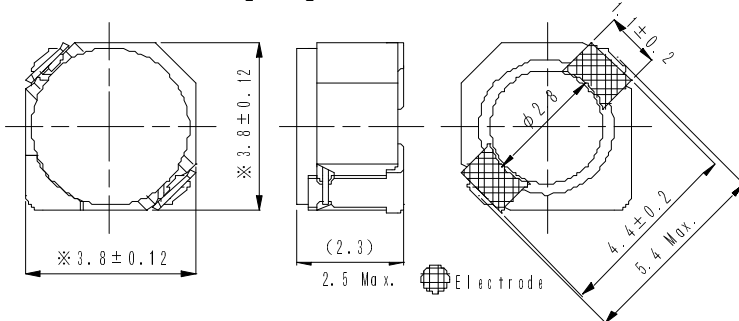
Packaging

- Carrier tape and reel packaging
- 7.0" diameter reel
- 500pcs per reel

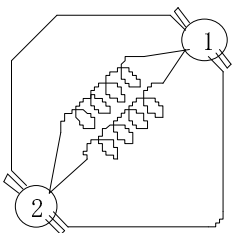
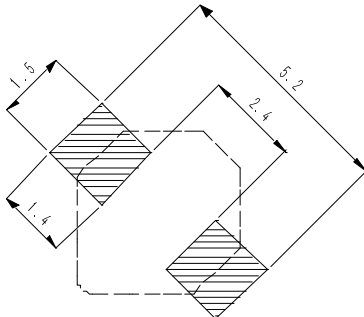
Applications

- Ideally used in Mobilephone, PDA, MP3, DSC/DVC, etc as DC-DC converter inductors.

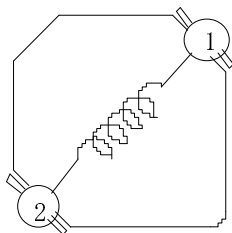
Dimension - [mm]



Land pattern and Schematics - [mm]



(0.47 μH ~ 10.0 μH)



(15.0 μH ~ 47.0 μH)

SMD Power Inductor CDRH3D23



Electrical Characteristics

| Part Name | Stamp | Inductance (μ H) [within] ※1 | D.C.R. (m Ω) Max. (Typ.) (at 20°C) | Saturation Current (A) ※2 | | Temperature Rise Current (A) ※3 |
|------------------|-------|---|--|------------------------------|----------|---------------------------------------|
| | | | | at 20°C | at 105°C | |
| CDRH3D23NP-R47NC | A | 0.47 \pm 30% | 23.5(18.8) | 3.10 | 2.40 | 3.30 |
| CDRH3D23NP-1R0PC | A | 1.0 \pm 25% | 25.0(20) | 2.80 | 2.00 | 3.10 |
| CDRH3D23NP-1R5PC | B | 1.5 \pm 25% | 29.0(24) | 2.20 | 1.65 | 2.90 |
| CDRH3D23NP-2R2PC | C | 2.2 \pm 25% | 38.3(31) | 1.80 | 1.30 | 2.50 |
| CDRH3D23NP-3R3PC | D | 3.3 \pm 25% | 56.3(45) | 1.45 | 1.10 | 2.20 |
| CDRH3D23NP-4R7PC | E | 4.7 \pm 25% | 68.8(55) | 1.30 | 0.95 | 1.90 |
| CDRH3D23NP-5R6PC | F | 5.6 \pm 25% | 75.0(60) | 1.10 | 0.80 | 1.80 |
| CDRH3D23NP-6R8PC | G | 6.8 \pm 25% | 87.8(72) | 1.00 | 0.75 | 1.70 |
| CDRH3D23NP-8R2PC | H | 8.2 \pm 25% | 94.8(77) | 0.95 | 0.70 | 1.60 |
| CDRH3D23NP-100MC | I | 10.0 \pm 20% | 117(95) | 0.85 | 0.60 | 1.40 |
| CDRH3D23NP-150MC | J | 15.0 \pm 20% | 191(154) | 0.70 | 0.50 | 0.85 |
| CDRH3D23NP-220MC | K | 22.0 \pm 20% | 270(219) | 0.55 | 0.40 | 0.75 |
| CDRH3D23NP-330MC | L | 33.0 \pm 20% | 381(307) | 0.50 | 0.35 | 0.60 |
| CDRH3D23NP-470MC | M | 47.0 \pm 20% | 546(441) | 0.35 | 0.25 | 0.55 |

※1. Inductance measuring condition: at 100kHz.

※2. Saturation current: The value of D.C. current when the inductance decreases to 65% of its nominal value.

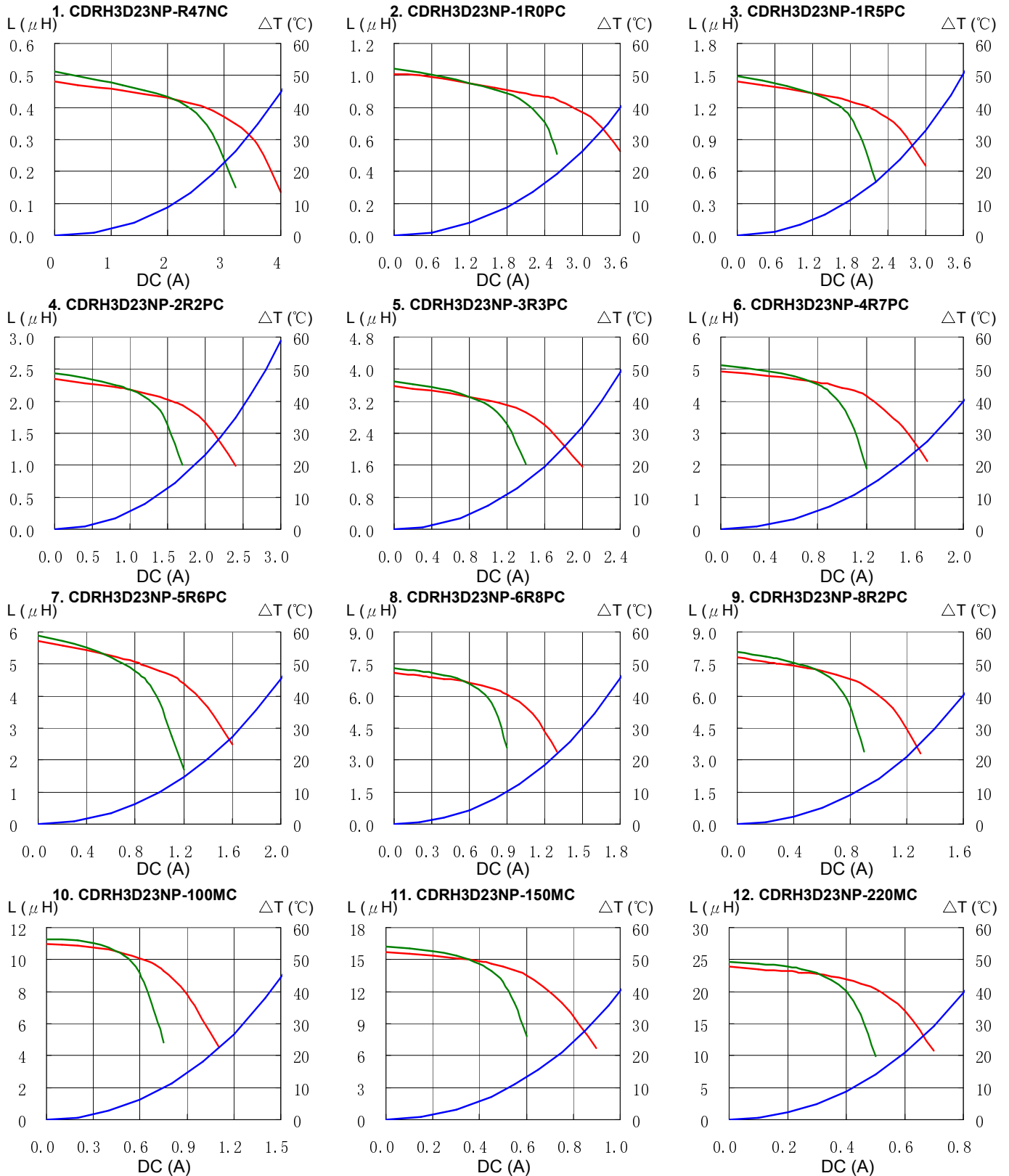
※3. Temperature rise current: The value of D.C. current when the temperature rise is $\Delta t=40^{\circ}\text{C}$ ($T_a=20^{\circ}\text{C}$).

SMD Power Inductor CDRH3D23



Saturation Current & Temperature Rise Graph

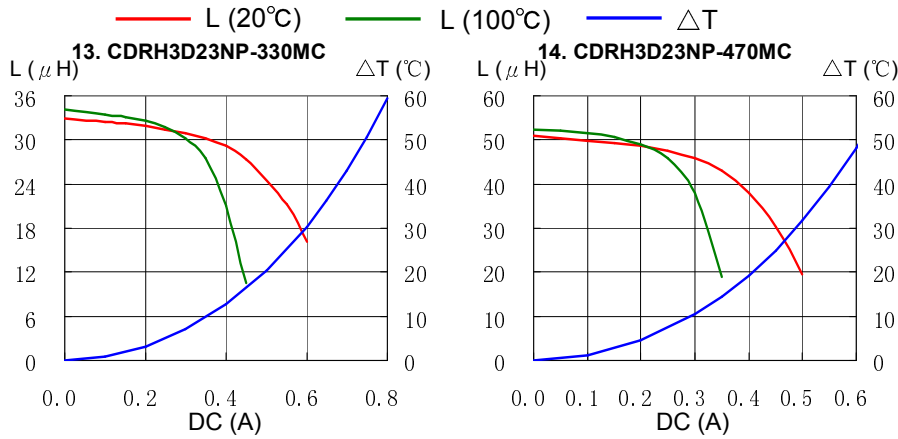
— L (20°C) — L (100°C) — ΔT



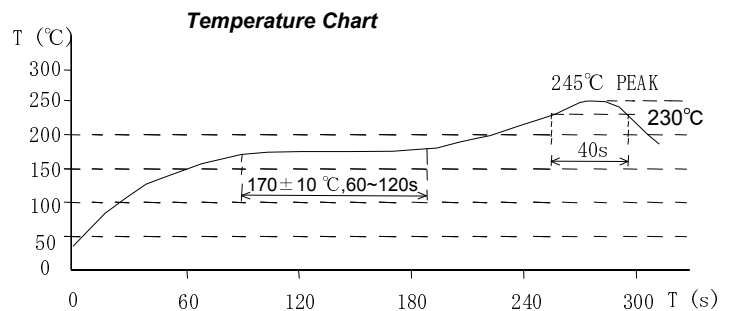
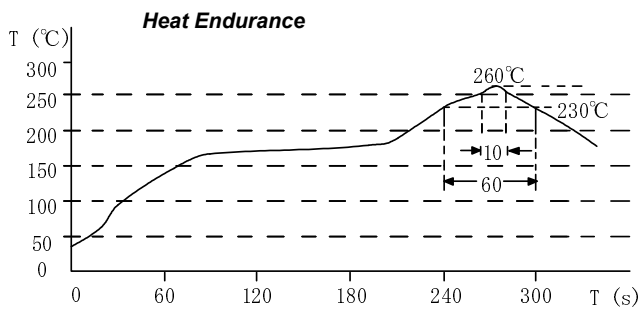
SMD Power Inductor CDRH3D23



Saturation Current & Temperature Rise Graph



Solder Reflow Condition



Please refer to the sales offices on our website - <http://www.sumida.com>

Hong Kong
Tel.+852-2880-6781
FAX.+852-2565-9600
sales@hk.sumida.com

Saitama(Japan)
Tel.+81-48-691-7300
FAX.+81-48-691-7340
sales@jp.sumida.com

Chicago
Tel.+1-847-545-6700
FAX. +1-847-545-6720
sales@us.sumida.com

Shanghai
Tel.+86-21-5836-3299
FAX.+86-21-5836-3266
shanghai.sales@cn.sumida.com

Seoul
Tel.+82-2-6237-0777
FAX.+82-2-6237-0778
sales@kr.sumida.com

Oberzell
Tel.+49-8591-937-0
FAX. +49-8591-937-103
contact@eu.sumida.com

Shenzhen
Tel.+86-755-8291-0228
FAX.+86-755-8291-0338
shenzhen.sales@cn.sumida.com

Singapore
Tel.+65-6296-3388
FAX.+65-6841-4426
sales@sg.sumida.com

Neumarkt
Tel.+49-9181-4509-110
FAX. +49-9181-4509-310
infocomp@eu.sumida.com

Taipei
Tel.+886-2-8751-2737
FAX.+886-2-8751-2738
sales@tw.sumida.com

San Jose
Tel.+1-408-321-9660
FAX.+1-408-321-9308
sales@us.sumida.com

X-ON Electronics

Largest Supplier of Electrical and Electronic Components

Click to view similar products for [Fixed Inductors](#) category:

Click to view products by [Sumida](#) manufacturer:

Other Similar products are found below :

[CR43NP-680KC](#) [CR54NP-470LC](#) [CR54NP-820KC](#) [CR54NP-8R5MC](#) [70F224AI](#) [MGDQ4-00004-P](#) [MHL1ECTTP18NJ](#) [MHQ1005P10NJ](#)
[MHQ1005P1N0S](#) [MHQ1005P2N4S](#) [MHQ1005P3N6S](#) [MHQ1005P5N1S](#) [MHQ1005P8N2J](#) [PE-51506NL](#) [PE-53601NL](#) [PE-53602NL](#) [PE-53630NL](#) [PE-53824SNLT](#) [PE-92100NL](#) [PG0434.801NLT](#) [PG0936.113NLT](#) [9220-20](#) [9310-16](#) [PM06-2N7](#) [PM06-39NJ](#) [A01TK](#) [1206CS-471XJ](#) [HC2LP-R47-R](#) [HC2-R47-R](#) [HC3-2R2-R](#) [HC3-R50-R](#) [HC8-1R2-R](#) [HCF1305-3R3-R](#) [1206CS-151XG](#) [RCH664NP-140L](#) [RCH664NP-4R7M](#) [RCH8011NP-221L](#) [RCP1317NP-332L](#) [RCP1317NP-391L](#) [RCR1010NP-470M](#) [RCR110DNP-331L](#) [DH2280-4R7M](#) [DS1608C-106](#)
[ASPI-4020HI-R10M-T](#) [B10TJ](#) [B82498B3101J000](#) [ELJ-RE27NJF2](#) [1812CS-153XJ](#) [1812CS-183XJ](#) [1812CS-223XJ](#)