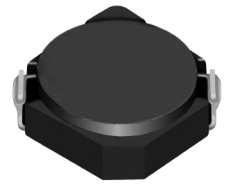
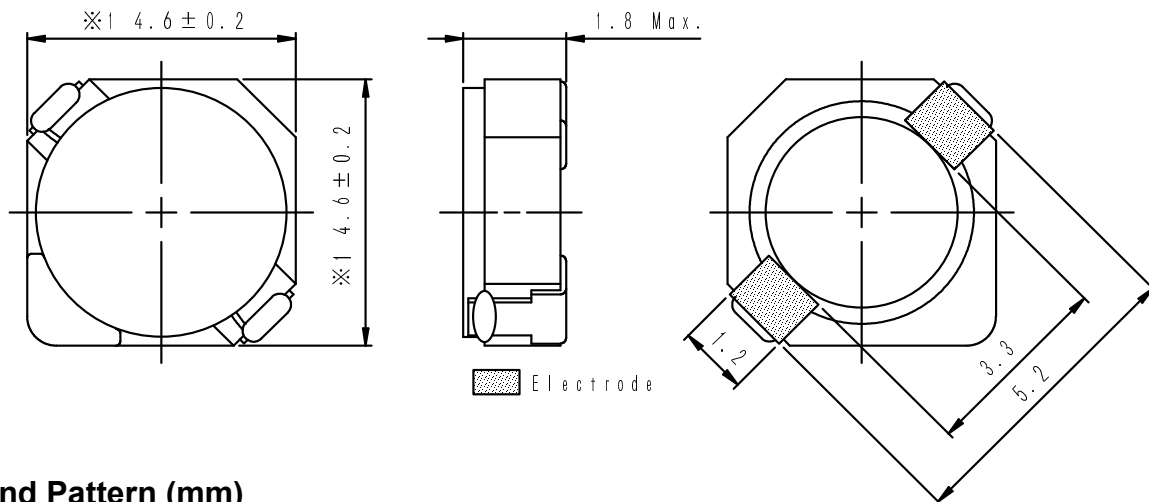
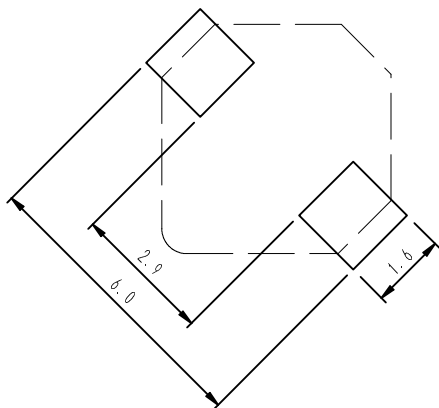


**Type: CDRH4D16**
**◆ Product Description**

- 4.8×4.8mm Max.(L×W),1.8mm Max. Height.
- Inductance range: 3.0~100  $\mu$  H.
- Rated current range: 0.29~1.75A.
- In addition to the standards versions shown here, custom inductors are also available to meet your exact requirements.


**◆ Feature**

- Magnetically shielded construction.
- Storage temperature range: -40°C ~+100°C.
- Operating temperature range: -40°C ~+100°C (Including coil's self temperature rise).
- Ideally used in Mobilephone,PDA,MP3,DSC/DVC,etc as DC-DC converter inductors.
- RoHS compliance.

**◆ Dimensions (mm)**

**◆ Land Pattern (mm)**


**Type: CDRH4D16**
**◆ Specification**

Part No. ※	Stamp	Inductance ( $\mu$ H) 1 00kHz/1V	D.C.R.(m $\Omega$ ) Max.(Typ.) (at 20°C)	Saturation Current (A) ※1	Temperature Rise Current (A) ※2
CDRH4D16NP-3R0N□	3R0	3.0 $\pm$ 25%	53(43)	1.75	2.30
CDRH4D16NP-4R7N□	4R7	4.7 $\pm$ 25%	75(60)	1.40	1.65
CDRH4D16NP-6R8N□	6R8	6.8 $\pm$ 25%	110(88)	1.15	1.30
CDRH4D16NP-100M□	100	10 $\pm$ 20%	155(125)	0.95	1.05
CDRH4D16NP-150M□	150	15 $\pm$ 20%	235(190)	0.77	0.82
CDRH4D16NP-220M□	220	22 $\pm$ 20%	330(265)	0.64	0.67
CDRH4D16NP-330M□	330	33 $\pm$ 20%	490(395)	0.52	0.53
CDRH4D16NP-470M□	470	47 $\pm$ 20%	680(550)	0.44	0.47
CDRH4D16NP-680M□	680	68 $\pm$ 20%	980(790)	0.37	0.38
CDRH4D16NP-101M□	101	100 $\pm$ 20%	1480(1190)	0.30	0.29

**※ Description of part name**

CDRH4D16NP-3R0N□

- B Box
- C Carrier Tape

※1. Saturation current: The DC current at which the inductance decreases to 65% of it's nominal value

※2. Temperature rise current: The DC current at which the temperature rise is  $\Delta t=40^{\circ}\text{C}$ .( $T_a=20^{\circ}\text{C}$ )

## X-ON Electronics

Largest Supplier of Electrical and Electronic Components

*Click to view similar products for [Fixed Inductors](#) category:*

*Click to view products by [Sumida](#) manufacturer:*

Other Similar products are found below :

[CR43NP-680KC](#) [CR54NP-820KC](#) [CR54NP-8R5MC](#) [CTX32CT-100](#) [70F224AI](#) [MGDQ4-00004-P](#) [MHL1ECTTP18NJ](#) [MHL1JCTTD12NJ](#)  
[PE-51506NL](#) [PE-53601NL](#) [PE-53602NL](#) [PE-53630NL](#) [PE-53824SNLT](#) [PE-62892NL](#) [PE-92100NL](#) [PG0434.801NLT](#) [PG0936.113NLT](#)  
[9310-16](#) [PM06-2N7](#) [PM06-39NJ](#) [A01TK](#) [1206CS-471XJ](#) [HC2-2R2TR](#) [HC2LP-R47-R](#) [HC3-2R2-R](#) [1206CS-151XG](#) [RCH664NP-140L](#)  
[RCH664NP-4R7M](#) [RCH8011NP-221L](#) [RCP1317NP-332L](#) [RCP1317NP-391L](#) [RCR1010NP-470M](#) [RCR110DNP-331L](#) [DH2280-4R7M](#)  
[DS1608C-106](#) [ASPI-4020HI-R10M-T](#) [B10TJ](#) [B82477P4333M](#) [B82498B3101J000](#) [B82498B3680J000](#) [ELJ-RE27NJF2](#) [1812CS-153XJ](#)  
[1812CS-183XJ](#) [1812CS-223XJ](#) [1812LS-104XJ](#) [1812LS-105XJ](#) [1812LS-124XJ](#) [1812LS-154XJ](#) [1812LS-223XJ](#) [1812LS-224XJ](#)