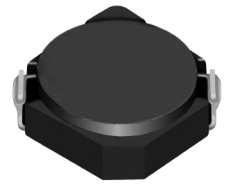
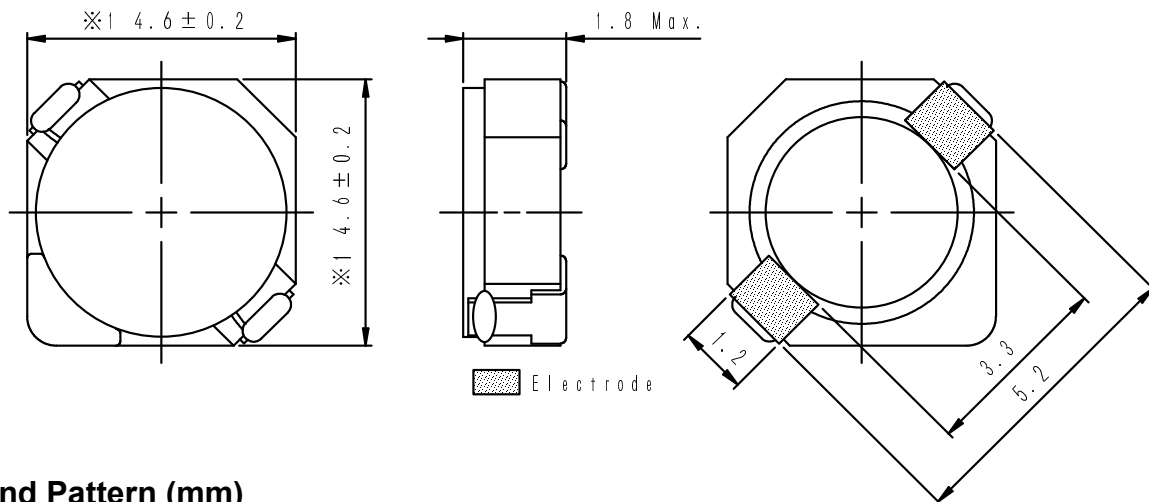
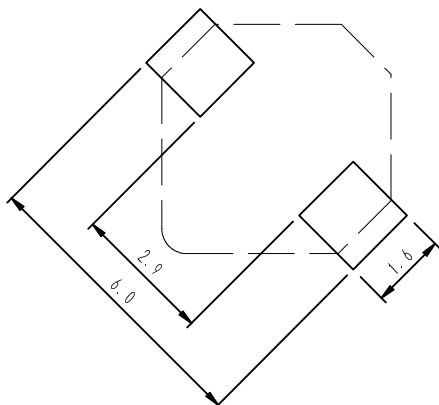


Type: CDRH4D16
◆ Product Description

- 4.8×4.8mm Max.(L×W),1.8mm Max. Height.
- Inductance range: 3.0~100 μ H.
- Rated current range: 0.29~1.75A.
- In addition to the standards versions shown here, custom inductors are also available to meet your exact requirements.


◆ Feature

- Magnetically shielded construction.
- Storage temperature range: -40°C ~+100°C.
- Operating temperature range: -40°C ~+100°C (Including coil's self temperature rise).
- Ideally used in Mobilephone,PDA,MP3,DSC/DVC,etc as DC-DC converter inductors.
- RoHS compliance.

◆ Dimensions (mm)

◆ Land Pattern (mm)


Type: CDRH4D16
◆ Specification

Part No. ※	Stamp	Inductance (μ H) 1 00kHz/1V	D.C.R.(m Ω) Max.(Typ.) (at 20°C)	Saturation Current (A) ※1	Temperature Rise Current (A) ※2
CDRH4D16NP-3R0N□	3R0	3.0 \pm 25%	53(43)	1.75	2.30
CDRH4D16NP-4R7N□	4R7	4.7 \pm 25%	75(60)	1.40	1.65
CDRH4D16NP-6R8N□	6R8	6.8 \pm 25%	110(88)	1.15	1.30
CDRH4D16NP-100M□	100	10 \pm 20%	155(125)	0.95	1.05
CDRH4D16NP-150M□	150	15 \pm 20%	235(190)	0.77	0.82
CDRH4D16NP-220M□	220	22 \pm 20%	330(265)	0.64	0.67
CDRH4D16NP-330M□	330	33 \pm 20%	490(395)	0.52	0.53
CDRH4D16NP-470M□	470	47 \pm 20%	680(550)	0.44	0.47
CDRH4D16NP-680M□	680	68 \pm 20%	980(790)	0.37	0.38
CDRH4D16NP-101M□	101	100 \pm 20%	1480(1190)	0.30	0.29

※ Description of part name

CDRH4D16NP-3R0N□

- B Box
- C Carrier Tape

※1. Saturation current: The DC current at which the inductance decreases to 65% of it's nominal value

※2. Temperature rise current: The DC current at which the temperature rise is $\Delta t=40^{\circ}\text{C}$.($T_a=20^{\circ}\text{C}$)

X-ON Electronics

Largest Supplier of Electrical and Electronic Components

Click to view similar products for [Fixed Inductors](#) category:

Click to view products by [Sumida](#) manufacturer:

Other Similar products are found below :

[MLZ1608M6R8WTD25](#) [MLZ1608N6R8LT000](#) [MLZ1608N3R3LTD25](#) [MLZ1608N3R3LT000](#) [MLZ1608N150LT000](#)
[MLZ1608M150WTD25](#) [MLZ1608M3R3WTD25](#) [MLZ1608M3R3WT000](#) [MLZ1608M150WT000](#) [MLZ1608A1R5WT000](#)
[MLZ1608N1R5LT000](#) [PCMB053T-1R0MS](#) [PCMB053T-1R5MS](#) [PCMB104T-1R5MS](#) [CR32NP-100KC](#) [CR32NP-151KC](#) [CR32NP-180KC](#)
[CR32NP-181KC](#) [CR32NP-1R5MC](#) [CR32NP-390KC](#) [CR32NP-3R9MC](#) [CR32NP-680KC](#) [CR32NP-820KC](#) [CR32NP-8R2MC](#) [CR43NP-](#)
[390KC](#) [CR43NP-560KC](#) [CR43NP-680KC](#) [CR54NP-181KC](#) [CR54NP-470LC](#) [CR54NP-820KC](#) [CR54NP-8R5MC](#) [MGDQ4-00004-P](#)
[MHL1ECTTP18NJ](#) [MHL1JCTTD12NJ](#) [PE-51506NL](#) [PE-53601NL](#) [PE-53630NL](#) [PE-53824SNLT](#) [PE-92100NL](#) [PG0434.801NLT](#)
[PG0936.113NLT](#) [PM06-2N7](#) [PM06-39NJ](#) [HC2LP-R47-R](#) [HC3-2R2-R](#) [HC3-R50-R](#) [HC8-1R2-R](#) [HCF1305-3R3-R](#) [1248AS-H-6R8N=P3](#)
[RCH664NP-140L](#)