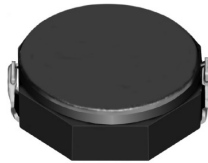


# SMD Power Inductor CDRH8D28HP



Halogen Free



## Description

- Ferrite drum core construction.
- Magnetically shielded.
- L × W × H: 8.3 × 8.3 × 3.0 mm Max.
- Product weight: 0.57g(Ref.)
- Moisture Sensitivity Level: 1
- RoHS compliance.
- Halogen Free available.

## Environmental Data

- Operating temperature range: -40°C~+100°C (including coil's self temperature rise)
- Storage temperature range: -40°C~+100°C
- Solder reflow temperature: 260 °C peak.

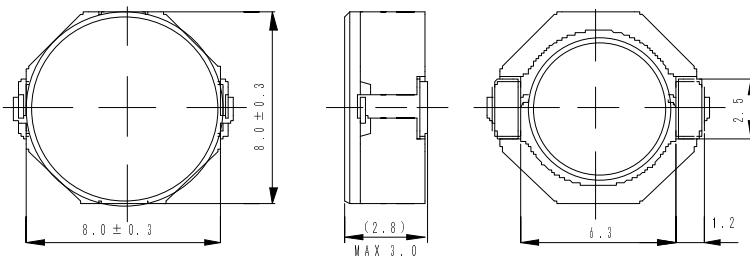
## Packaging

- Carrier tape and reel packaging
- 12.9" diameter reel
- 1000pcs per reel

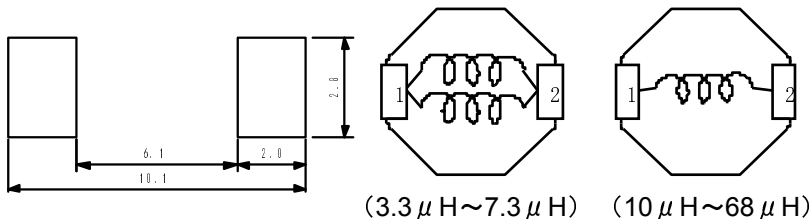
## Applications

- Ideally used in Notebook PC, Game machine, HDD, DVC, LCD TV etc as DC-DC converter inductors.

## Dimension - [mm]



## Land pattern and Schematics - [mm]



## Electrical Characteristics

| Part Name          | Stamp | Inductance (μH) [within] ※1 | D.C.R. (mΩ) Max. (Typ.) (at 20°C) | Saturation Current (A) ※2 |          | Temperature Rise Current (A) ※3 |
|--------------------|-------|-----------------------------|-----------------------------------|---------------------------|----------|---------------------------------|
|                    |       |                             |                                   | at 20°C                   | at 100°C |                                 |
| CDRH8D28HPNP-3R3NC | 3R3H  | 3.3 ± 30%                   | 35(27)                            | 6.50                      | 4.60     | 3.80                            |
| CDRH8D28HPNP-4R7NC | 4R7H  | 4.7 ± 30%                   | 40(31)                            | 4.50                      | 3.60     | 3.60                            |
| CDRH8D28HPNP-7R3NC | 7R3H  | 7.3 ± 30%                   | 66(51)                            | 4.00                      | 3.10     | 2.40                            |
| CDRH8D28HPNP-100NC | 100H  | 10 ± 30%                    | 78(60)                            | 3.40                      | 2.50     | 2.10                            |
| CDRH8D28HPNP-150NC | 150H  | 15 ± 30%                    | 125(96)                           | 2.80                      | 2.30     | 1.70                            |
| CDRH8D28HPNP-220NC | 220H  | 22 ± 30%                    | 182(140)                          | 2.50                      | 1.90     | 1.35                            |
| CDRH8D28HPNP-330NC | 330H  | 33 ± 30%                    | 286(220)                          | 1.90                      | 1.60     | 1.10                            |
| CDRH8D28HPNP-470NC | 470H  | 47 ± 30%                    | 345(265)                          | 1.60                      | 1.36     | 1.00                            |
| CDRH8D28HPNP-680NC | 680H  | 68 ± 30%                    | 520(400)                          | 1.30                      | 1.10     | 0.80                            |

※1. Inductance measuring conditions at 100kHz.

※2. Saturation current: The DC current at which the inductance decreases to 65% of its nominal value.

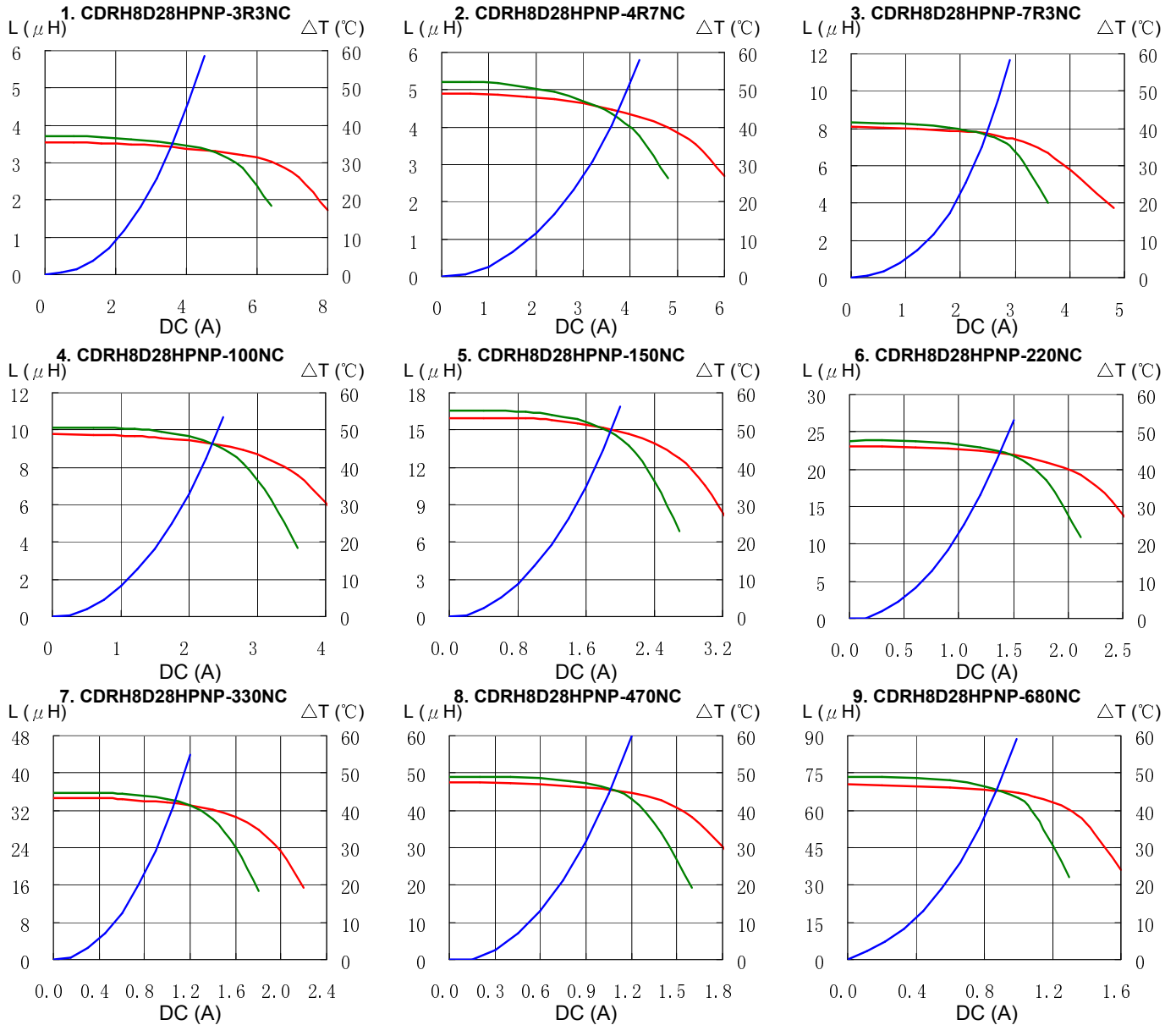
※3. Temperature rise current: The DC current at which the temperature rise is Δt=40°C.(Ta=20°C)

# SMD Power Inductor CDRH8D28HP



## Saturation Current & Temperature Rise Graph

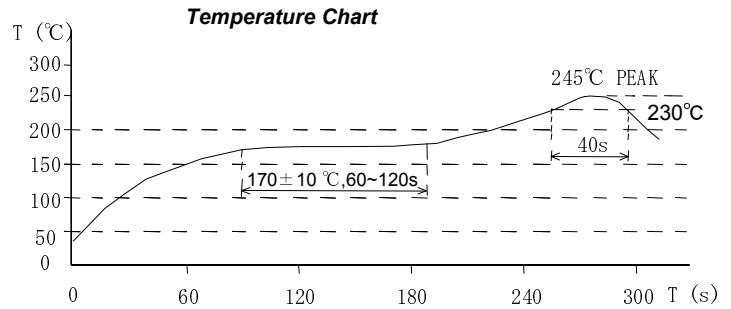
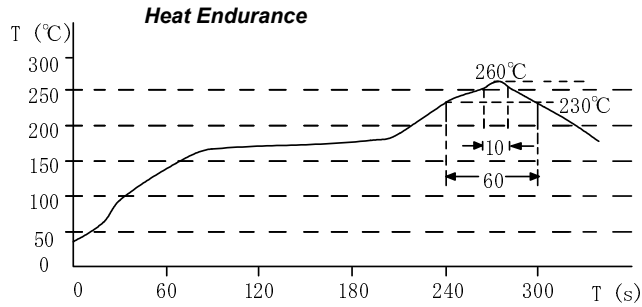
— L (20°C) — L (100°C) —  $\Delta T$



# SMD Power Inductor CDRH8D28HP



## Solder Reflow Condition



Please refer to the sales offices on our website - <http://www.sumida.com>

### Hong Kong

Tel.+852-2880-6781  
FAX.+852-2565-9600  
[sales@hk.sumida.com](mailto:sales@hk.sumida.com)

### Saitama(Japan)

Tel.+81-48-691-7300  
FAX.+81-48-691-7340  
[sales@jp.sumida.com](mailto:sales@jp.sumida.com)

### Chicago

Tel.+1-847-545-6700  
FAX. +1-847-545-6720  
[sales@us.sumida.com](mailto:sales@us.sumida.com)

### Shanghai

Tel.+86-21-5836-3299  
FAX.+86-21-5836-3266  
[shanghai.sales@cn.sumida.com](mailto:shanghai.sales@cn.sumida.com)

### Seoul

Tel.+82-2-6237-0777  
FAX.+82-2-6237-0778  
[sales@kr.sumida.com](mailto:sales@kr.sumida.com)

### Oberzell

Tel.+49-8591-937-0  
FAX. +49-8591-937-103  
[contact@eu.sumida.com](mailto:contact@eu.sumida.com)

### Shenzhen

Tel.+86-755-8291-0228  
FAX.+86-755-8291-0338  
[shenzhen.sales@cn.sumida.com](mailto:shenzhen.sales@cn.sumida.com)

### Singapore

Tel.+65-6296-3388  
FAX.+65-6841-4426  
[sales@sg.sumida.com](mailto:sales@sg.sumida.com)

### Neumarkt

Tel.+49-9181-4509-110  
FAX. +49-9181-4509-310  
[infocomp@eu.sumida.com](mailto:infocomp@eu.sumida.com)

### Taipei

Tel.+886-2-8751-2737  
FAX.+886-2-8751-2738  
[sales@tw.sumida.com](mailto:sales@tw.sumida.com)

### San Jose

Tel.+1-408-321-9660  
FAX.+1-408-321-9308  
[sales@us.sumida.com](mailto:sales@us.sumida.com)

## X-ON Electronics

Largest Supplier of Electrical and Electronic Components

*Click to view similar products for [Fixed Inductors](#) category:*

*Click to view products by [Sumida](#) manufacturer:*

Other Similar products are found below :

[CR43NP-680KC](#) [CR54NP-820KC](#) [CR54NP-8R5MC](#) [CTX32CT-100](#) [70F224AI](#) [MGDQ4-00004-P](#) [MHL1ECTTP18NJ](#) [MHL1JCTTD12NJ](#)  
[PE-51506NL](#) [PE-53601NL](#) [PE-53602NL](#) [PE-53630NL](#) [PE-53824SNLT](#) [PE-62892NL](#) [PE-92100NL](#) [PG0434.801NLT](#) [PG0936.113NLT](#)  
[9310-16](#) [PM06-2N7](#) [PM06-39NJ](#) [A01TK](#) [1206CS-471XJ](#) [HC2-2R2TR](#) [HC2LP-R47-R](#) [HC3-2R2-R](#) [1206CS-151XG](#) [RCH664NP-140L](#)  
[RCH664NP-4R7M](#) [RCH8011NP-221L](#) [RCP1317NP-332L](#) [RCP1317NP-391L](#) [RCR1010NP-470M](#) [RCR110DNP-331L](#) [DH2280-4R7M](#)  
[DS1608C-106](#) [ASPI-4020HI-R10M-T](#) [B10TJ](#) [B82477P4333M](#) [B82498B3101J000](#) [B82498B3680J000](#) [ELJ-RE27NJF2](#) [1812CS-153XJ](#)  
[1812CS-183XJ](#) [1812CS-223XJ](#) [1812LS-104XJ](#) [1812LS-105XJ](#) [1812LS-124XJ](#) [1812LS-154XJ](#) [1812LS-223XJ](#) [1812LS-224XJ](#)