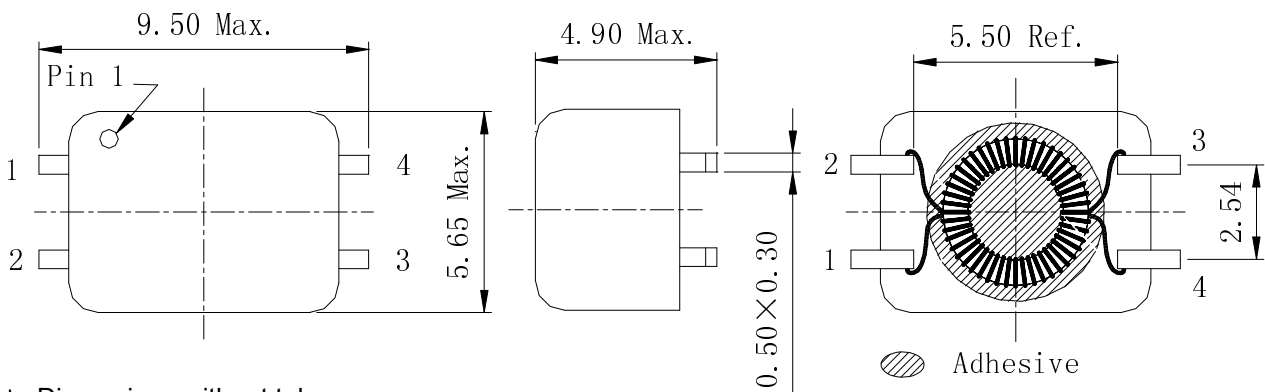


**Type: CPFC54**
**◆ Product Description**

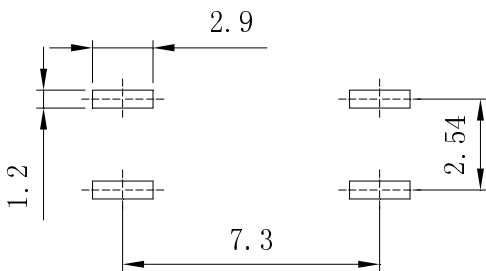
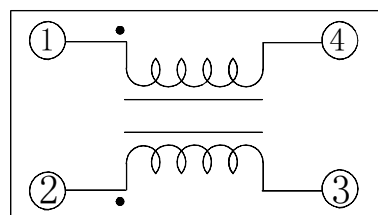
- 9.5 × 5.65mm Max.(L×W), 4.90mm Max. Height .

**◆ Feature**

- Ideally used in xDSL, Modem and telecom applications.
- RoHS Compliance.


**◆ Dimensions (mm)**


- \* Dimensions without tolerance are approx.
- \* Dimension does not include solder used on coil.
- \* Pin pitch shall be measured at the root of terminal.

**◆ Land Pattern (mm)**

**◆ Schematics (Bottom)**


**Type: CPFC54**
**◆ Specification**

Part Name	Stamp	Inductance (μH) (1-4) or (2-3) ※1	L <sub>S</sub> (nH)Typ. 1-4(2+3 short) ※2	I <sub>R</sub> (mA)1-2 (3+4short) ※3	D.C.R(m Ω) Typ. (1-4) or (2-3) (at 20°C)	Hipot (V) (1, 4-2, 3) DC 2s 0.5mA
CPFC54-050C	050C	5 ± 30%	50	900	100	250
CPFC54-110C	110C	11 ± 30%	50	700	120	250
CPFC54-250C	250C	25 ± 30%	150	700	130	250
CPFC54-250S	250S	25 ± 30%	1500	700	130	250
CPFC54-510C	510C	51 ± 30%	200	600	160	250
CPFC54-510S	510S	51 ± 30%	2000	600	160	250
CPFC54-101C	101C	100 ± 30%	200	500	230	250
CPFC54-471C	471C	470 ± 30%	200	500	200	750
CPFC54-102C	102C	<sup>+50%</sup> 1000-30%	250	500	200	750
CPFC54-222C	222C	<sup>+50%</sup> 2200-30%	250	400	400	750
CPFC54-472C	472C	<sup>+50%</sup> 4700-30%	300	200	650	750

※1、※2 Measuring condition 100kHz, 0.1V

※3 . I<sub>R</sub>:DC current when temperature of coil increased up to 40°C.(Ta=20°C)

## X-ON Electronics

Largest Supplier of Electrical and Electronic Components

*Click to view similar products for [Common Mode Chokes / Filters](#) category:*

*Click to view products by [Sumida](#) manufacturer:*

Other Similar products are found below :

[PE-64683](#) [RD5122-6-9M6](#) [RD6137-6-7M5](#) [RD8147-16-3M0](#) [ST6118T-R](#) [FE3X025-10-7NL](#) [RD7147-25-0M7](#) [TCM0806G-350-2P-T](#)  
[TCM0806G-650-2P-T](#) [IND-0110](#) [UAL21VR0802000](#) [UALSC023000000](#) [UALSC1020JH000](#) [UALSU10VD20010](#) [UALSU9VD070100](#) [36-00037](#) [UALW21HS072450](#) [UALSU9H0208000](#) [UAL24VK06450CH](#) [PLT10HH501100PNB](#) [PLT10HH401100PNB](#) [PLT10HH1026R0PNB](#)  
[36-00029-01](#) [PE-67531](#) [TLH10UB](#) [113 0R5](#) [2752045447](#) [7351V](#) [CMF16-153131](#) [RD7147-6-6M0](#) [T8116NLT](#) [FE2X10-4-2NL](#) [36-00029-07](#)  
[T8003NLT](#) [CTX01-13663](#) [CTX66-19521-R](#) [RC212-0.5-10M](#) [RC112-0.4-15M](#) [RC212-0.6-6M8](#) [RC212-0.4-15M](#) [RC112-0.3-30M](#)  
[WTCF2012Z0M751PB](#) [PH9408.814NLT](#) [PAC6006.364NLT](#) [PAC6006.444NLT](#) [PAC6006.204NLT](#) [PH9407.204NLT](#) [PAC6006.264NLT](#)  
[PH9408.105NLT](#) [PH9408.494NLT](#) [PAC6006.104NLT](#)