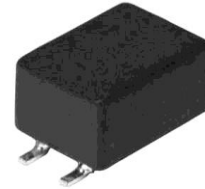


# CPFC54



## ◆ Features

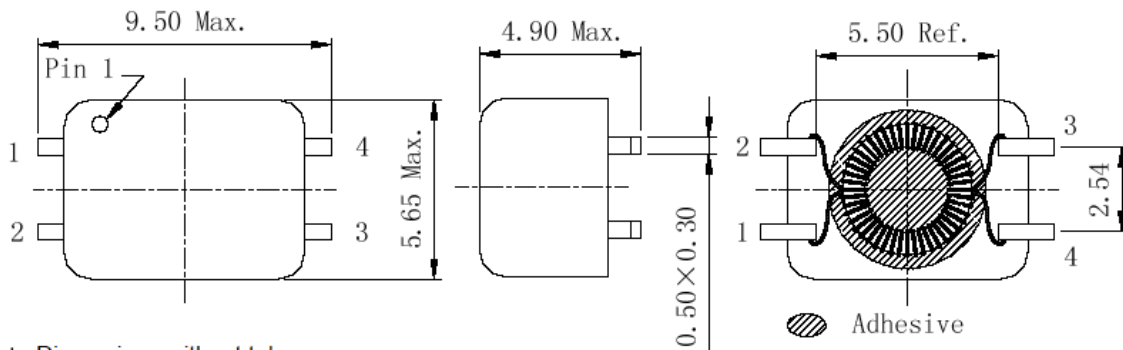
- High performance
- Suitable for reflow soldering and conductive adhesion
- Wide inductance range
- RoHS compliance



## ◆ Application

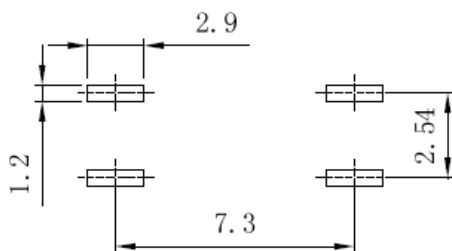
- Digital communication equipment
- Signal line

## ◆ Dimension & Circuit (mm)

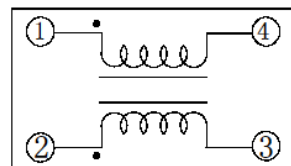


- \* Dimensions without tolerance are approx.
- \* Dimension does not include solder used on coil.
- \* Pin pitch shall be measured at the root of terminal.

## ◆ Land Patterns (mm)



## ◆ Schematics (Bottom)





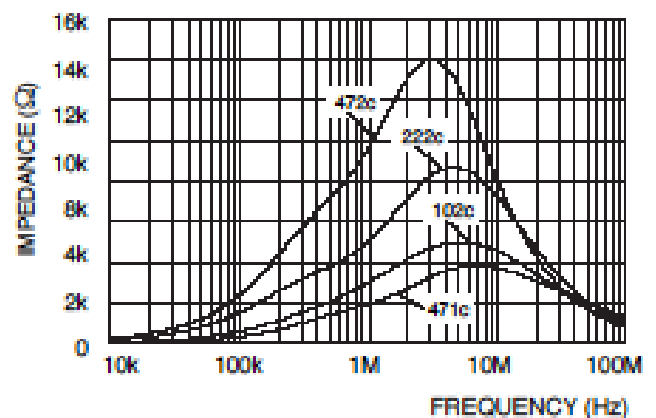
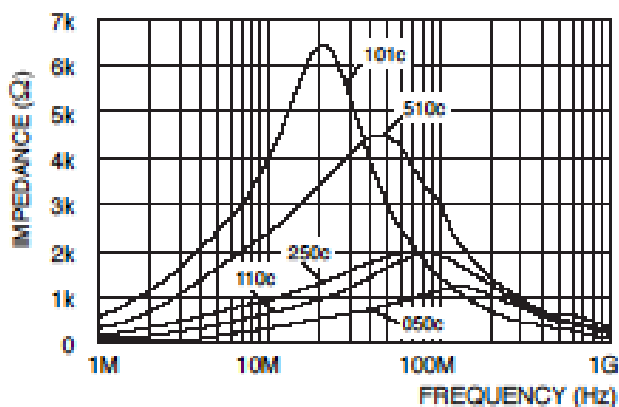
## ◆ Specifications

Part Name	Stamp	Inductance ( $\mu$ H) (1-4) or (2-3) ※1	$L_S$ (nH)Typ. 1-4(2+3 short) ※2	$I_R$ (mA)1-2 (3+4short) ※3	D.C.R(m $\Omega$ ) Typ. (1-4) or (2-3) (at 20°C)	Hipot (V) (1, 4-2, 3) DC 2s 0.5mA
CPFC54-050C	050C	5 $\pm$ 30%	50	900	100	250
CPFC54-110C	110C	11 $\pm$ 30%	50	700	120	250
CPFC54-250C	250C	25 $\pm$ 30%	150	700	130	250
CPFC54-250S	250S	25 $\pm$ 30%	1500	700	130	250
CPFC54-510C	510C	51 $\pm$ 30%	200	600	160	250
CPFC54-510S	510S	51 $\pm$ 30%	2000	600	160	250
CPFC54-101C	101C	100 $\pm$ 30%	200	500	230	250
CPFC54-471C	471C	470 $\pm$ 30%	200	500	200	750
CPFC54-102C	102C	+50% 1000-30%	250	500	200	750
CPFC54-222C	222C	+50% 2200-30%	250	400	400	750
CPFC54-472C	472C	+50% 4700-30%	300	200	650	750

※1、※2 Measuring condition 100kHz, 0.1V

※3 .  $I_R$ :DC current when temperature of coil increased up to 40°C.( $T_a=20^\circ\text{C}$ )

## ◆ Impedance Characteristics



## X-ON Electronics

Largest Supplier of Electrical and Electronic Components

*Click to view similar products for [Common Mode Chokes / Filters](#) category:*

*Click to view products by [Sumida](#) manufacturer:*

Other Similar products are found below :

[RGCMF1210900H3T](#) [B82722A2102N001](#) [UAL21V07012500](#) [UAL24VR06500CH](#) [UALSC0220G0000](#) [UALSC058000000](#)  
[UALSC0580J0000](#) [UALSC1520JH000](#) [UALSU10VR15019](#) [UALSU10VR20010](#) [UALSU16VD30030](#) [UALSU16VD40010](#)  
[UALSU9H0305000](#) [UALSU9HF030600](#) [UALSU9HF060300](#) [UALSU9HR050340](#) [UALSU9VD070100](#) [UALSU9VR070170](#) [5701610000](#)  
[CM7060M132R-10](#) [UALW21HS200290](#) [UALW21HS072450](#) [UALSU9VD070400](#) [UALSU9V0701000](#) [UALSU9HR030900](#)  
[UALSU9HF050500](#) [UALSU9H0701000](#) [UALSU9H0208000](#) [UALSU9H0110000](#) [UALSCF25081300](#) [UALSC0305GS000](#)  
[UALSC0120G0000](#) [UAL24VK06450CH](#) [UAL11VL1105000](#) [RN112-3.6-02-0M4](#) [RN114-1.2-02-10M](#) [RN122-0.6-02-47M](#) [RN122-3-02-4M5](#)  
[RN142-1-02-33M](#) [RN214-2.5-02-3M3](#) [RN112-2-02-1M0](#) [RN143-6-02-1M8](#) [RN214-0.8-02-27M](#) [RN242-1.4-02-27M](#) [EXC-X4CH120X](#)  
[DLW5BTM102TQ2L](#) [CMF16-153131](#) [CMF23H-273141](#) [744252510](#) [B82793C0253N201](#)