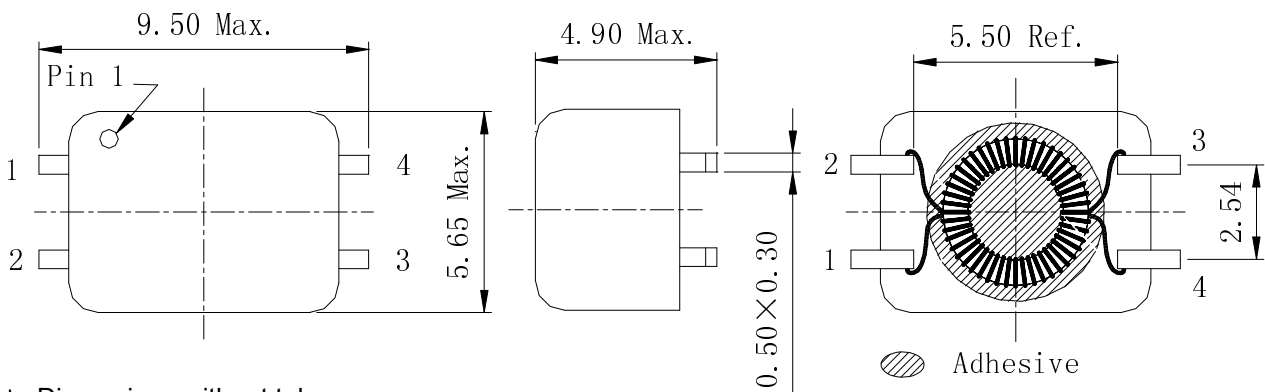


Type: CPFC54
◆ Product Description

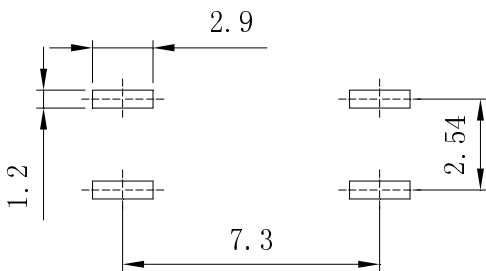
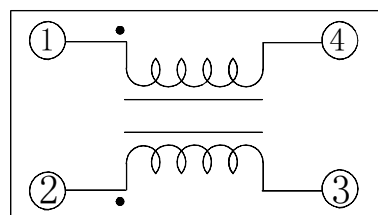
- 9.5 × 5.65mm Max.(L×W), 4.90mm Max. Height .


◆ Feature

- Ideally used in xDSL, Modem and telecom applications.
- RoHS Compliance.

◆ Dimensions (mm)


- * Dimensions without tolerance are approx.
- * Dimension does not include solder used on coil.
- * Pin pitch shall be measured at the root of terminal.

◆ Land Pattern (mm)

◆ Schematics (Bottom)


Type: CPFC54
◆ Specification

Part Name	Stamp	Inductance (μH) (1-4) or (2-3) ※1	L _S (nH)Typ. 1-4(2+3 short) ※2	I _R (mA)1-2 (3+4short) ※3	D.C.R(m Ω) Typ. (1-4) or (2-3) (at 20°C)	Hipot (V) (1, 4-2, 3) DC 2s 0.5mA
CPFC54-050C	050C	5 ± 30%	50	900	100	250
CPFC54-110C	110C	11 ± 30%	50	700	120	250
CPFC54-250C	250C	25 ± 30%	150	700	130	250
CPFC54-250S	250S	25 ± 30%	1500	700	130	250
CPFC54-510C	510C	51 ± 30%	200	600	160	250
CPFC54-510S	510S	51 ± 30%	2000	600	160	250
CPFC54-101C	101C	100 ± 30%	200	500	230	250
CPFC54-471C	471C	470 ± 30%	200	500	200	750
CPFC54-102C	102C	^{+50%} 1000-30%	250	500	200	750
CPFC54-222C	222C	^{+50%} 2200-30%	250	400	400	750
CPFC54-472C	472C	^{+50%} 4700-30%	300	200	650	750

※1、※2 Measuring condition 100kHz, 0.1V

※3 . I_R:DC current when temperature of coil increased up to 40°C.(Ta=20°C)

X-ON Electronics

Largest Supplier of Electrical and Electronic Components

Click to view similar products for [Common Mode Chokes / Filters](#) category:

Click to view products by [Sumida](#) manufacturer:

Other Similar products are found below :

[74279408](#) [PE-62911NL](#) [PE-64683](#) [RD5122-6-9M6](#) [RGCMF1210900H3T](#) [ST6118T-R](#) [FE3X025-10-7NL](#) [T8114NLT](#) [RD5122-10-6M0](#)
[TCM0806G-350-2P-T](#) [TCM0806G-650-2P-T](#) [B2013FNLT](#) [IND-0110](#) [UAL21VR0802000](#) [UALSC023000000](#) [UALSC1020JH000](#)
[UALSC1520JH000](#) [UALSU10VR15019](#) [UALSU9VD070100](#) [36-00037](#) [5701610000](#) [UALW21HS200290](#) [UALW21HS072450](#)
[UALSU9HF050500](#) [UALSU9H0208000](#) [UAL24VK06450CH](#) [PLT10HH401100PNB](#) [PLT10HH1026R0PNB](#) [PE-67531](#) [TLH10UB](#) [113 OR5](#)
[2752045447](#) [CMS3-11-R](#) [7351V](#) [CMF16-153131](#) [744252510](#) [T8116NLT](#) [CMS2-10-R](#) [DLW44SN101SK2L](#) [FE2X10-4-2NL](#) [744253200](#)
[744253101](#) [744252220](#) [TX8111NLT](#) [UAL30VR3500470](#) [CTX01-19077-R](#) [T8003NLT](#) [CTX01-13663](#) [CTX66-19521-R](#) [7446630047](#) [744136](#)