

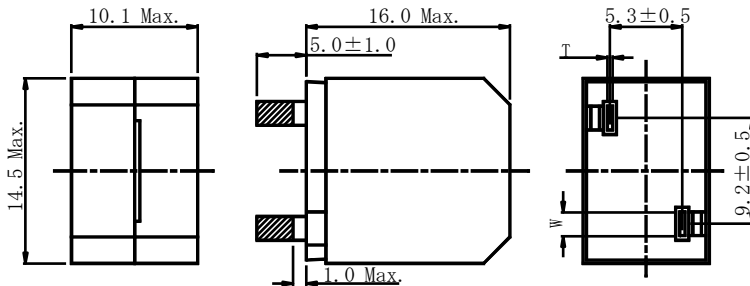
# PIN Power Inductor DEP1016



## Description

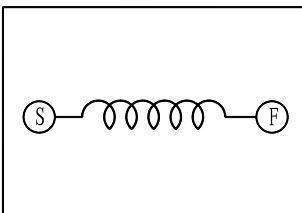
- Ferrite core construction.
- Magnetically shielded.
- L × W × H: 14.5 × 10.1 × 16.0 mm Max.
- Product weight: 8.9 g (Ref.)
- Moisture Sensitivity Level: 1
- RoHS compliance.

## Dimension - [mm]



No.	L (μH)	T (mm)	W (mm)
1	5.0	0.60ref.	1.75ref.
2	10.0	0.50ref.	1.75ref.
3	15.0	0.50ref.	1.75ref.
4	18.0	0.45ref.	1.75ref.
5	22.0	0.45ref.	1.75ref.
6	27.0	0.40ref.	1.75ref.
7	33.0	0.35ref.	1.75ref.

## Schematics - [mm]



## Environmental Data

- Operating temperature range: -40°C ~ +105°C (including coil's self temperature rise)
- Storage temperature range: -40°C ~ +105°C

## Packaging

- Pallet packaging.

## Applications

- Ideally used in Digital amplifier filter in car audio, home theater and large LCD etc.

## Electrical Characteristics

Part No.	Stamp	Inductance [within] ※1	D.C.R. (mΩ) [Max.] (at 20°C)	Saturation Current (A) (at 20°C) ※2	Temperature rise current (A) ※3
DEP1016NP-5R0PB	5R0	5.0μH ± 25%	5.1	18.2	14.1
DEP1016NP-100PB	100	10.0μH ± 25%	9.1	13.4	11.5
DEP1016NP-150PB	150	15.0μH ± 25%	9.1	8.7	11.5
DEP1016NP-180PB	180	18.0μH ± 25%	10.1	7.9	9.8
DEP1016NP-220PB	220	22.0μH ± 25%	11.4	7.2	8.5
DEP1016NP-270PB	270	27.0μH ± 25%	13.8	6.6	7.5
DEP1016NP-330PB	330	33.0μH ± 25%	15.0	5.8	7.3

※1. Measuring condition: at 1kHz.

※2. Saturation current: The value of D.C. current when the inductance decreases to 75% of its nominal value.

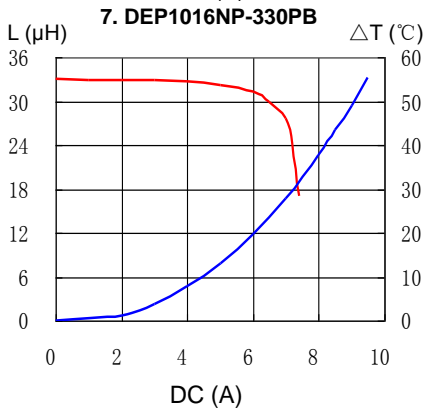
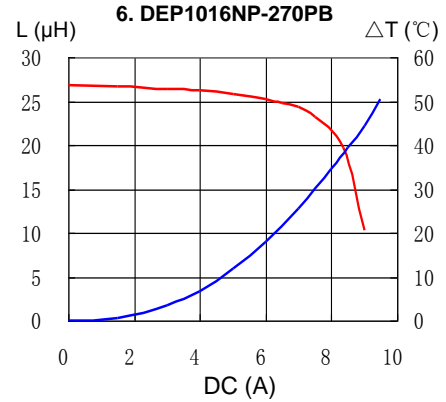
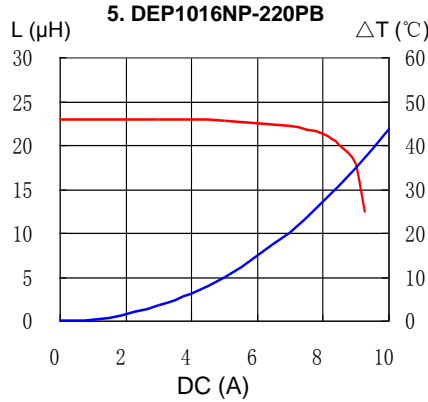
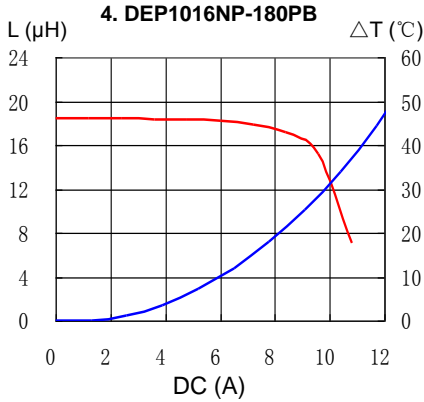
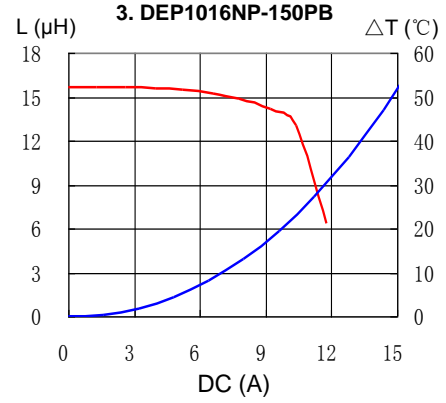
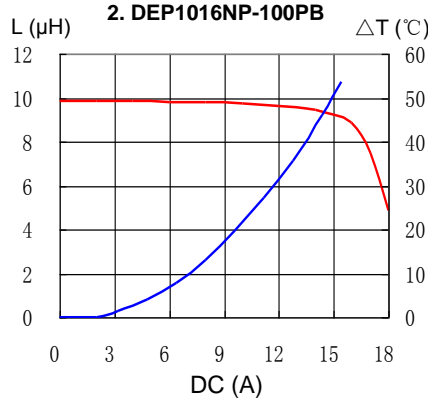
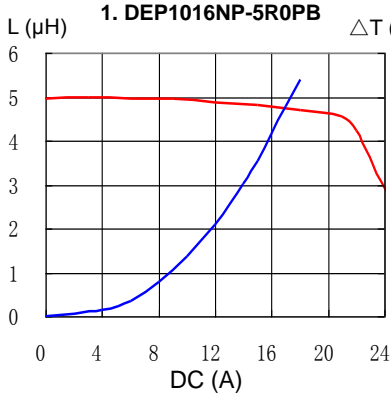
※3. Temperature rise current: The value of D.C. current when the temperature rise is Δt=40°C (Ta=20°C).

# PIN Power Inductor DEP1016



## Saturation Current & Temperature Rise Graph

— L (20°C)    —  $\Delta T$



Please refer to the sales offices on our website - <http://www.sumida.com>

### Hong Kong

Tel. +852-2880-6781  
FAX. +852-2565-9600  
[sales@hk.sumida.com](mailto:sales@hk.sumida.com)

### Saitama(Japan)

Tel. +81-48-691-7300  
FAX. +81-48-691-7340  
[sales@jp.sumida.com](mailto:sales@jp.sumida.com)

### Chicago

Tel. +1-847-545-6700  
FAX. +1-847-545-6720  
[sales@us.sumida.com](mailto:sales@us.sumida.com)

### Shanghai

Tel. +86-21-5836-3299  
FAX. +86-21-5836-3266  
[shanghai.sales@cn.sumida.com](mailto:shanghai.sales@cn.sumida.com)

### Seoul

Tel. +82-2-6237-0777  
FAX. +82-2-6237-0778  
[sales@kr.sumida.com](mailto:sales@kr.sumida.com)

### Obernzell

Tel. +49-8591-937-0  
FAX. +49-8591-937-103  
[contact@eu.sumida.com](mailto:contact@eu.sumida.com)

### Shenzhen

Tel. +86-755-8291-0228  
FAX. +86-755-8291-0338  
[shenzhen.sales@cn.sumida.com](mailto:shenzhen.sales@cn.sumida.com)

### Singapore

Tel. +65-6296-3388  
FAX. +65-6841-4426  
[sales@sg.sumida.com](mailto:sales@sg.sumida.com)

### Neumarkt

Tel. +49-9181-4509-110  
FAX. +49-9181-4509-310  
[infocomp@eu.sumida.com](mailto:infocomp@eu.sumida.com)

### Taipei

Tel. +886-2-8751-2737  
FAX. +886-2-8751-2738  
[sales@tw.sumida.com](mailto:sales@tw.sumida.com)

### San Jose

Tel. +1-408-321-9660  
FAX. +1-408-321-9308  
[sales@us.sumida.com](mailto:sales@us.sumida.com)

## X-ON Electronics

Largest Supplier of Electrical and Electronic Components

*Click to view similar products for [Power Inductors - Leaded](#) category:*

*Click to view products by [Sumida](#) manufacturer:*

Other Similar products are found below :

[9330-26](#) [PE-51518NL](#) [4590R-472K](#) [IHDM1107BBEV5R6M20](#) [RCH114NP-101KB](#) [DEP1016NP-220PB](#) [DEP1016NP-100PB](#) [RCP1317NP-820M](#) [RCH8011NP-681L](#) [AIAP-02-5R6M](#) [2474-42L](#) [DRC-0406-102J-UL](#) [DRC-0406-222J-UL](#) [DRC-0406-101J-UL](#) [DRC-0406-151J-UL](#) [DRC-0406-152J-UL](#) [DRC-0406-471J-UL](#) [DRC-0608-472J-UL](#) [DRC-0608-822J-UL](#) [DRC-0608-333J-UL](#) [DRC-0608-471J-UL](#) [DRC-0608-223J-UL](#) [DRC-0608-473J-UL](#) [DRC-0608-101J-UL](#) [DRC-0608-332J-UL](#) [DRC-0707-331J-UL](#) [DRC-0807-471J-UL](#) [DRC-0810-121J-UL](#) [DRC-0810-821J-UL](#) [DRC-1010-153J-UL](#) [DRC-1010-331J-UL](#) [DRC-1010-332J-UL](#) [DRC-1010-101J-UL](#) [DRC-1010-472J-UL](#) [DRC-1010-682J-UL](#) [DRC-V-181K](#) [DRC-V-330K](#) [DRC-V-331K](#) [DRC-V-101K](#) [DRC-V-150K](#) [DRC-V-270K](#) [DRC-V-820K](#) [DRC-V-151K](#) [DRC-V-152K](#) [DRC-V-182K](#) [DRC-V-472K](#) [DRC-V-6R8K](#) [DRC-V-273K](#) [DRC-V-393K](#) [DRC-V-223K](#)