

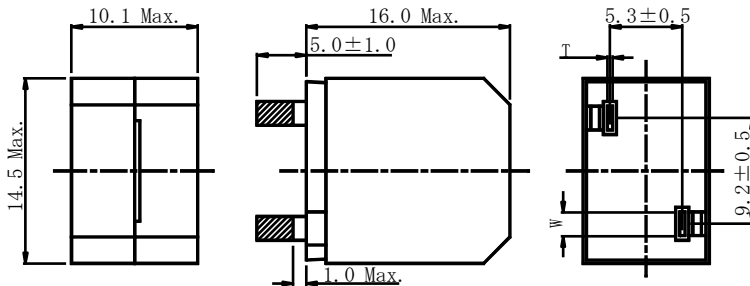
PIN Power Inductor DEP1016



Description

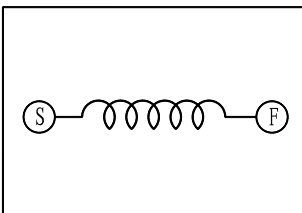
- Ferrite core construction.
- Magnetically shielded.
- L × W × H: 14.5 × 10.1 × 16.0 mm Max.
- Product weight: 8.9 g (Ref.)
- Moisture Sensitivity Level: 1
- RoHS compliance.

Dimension - [mm]



No.	L (μH)	T (mm)	W (mm)
1	5.0	0.60ref.	1.75ref.
2	10.0	0.50ref.	1.75ref.
3	15.0	0.50ref.	1.75ref.
4	18.0	0.45ref.	1.75ref.
5	22.0	0.45ref.	1.75ref.
6	27.0	0.40ref.	1.75ref.
7	33.0	0.35ref.	1.75ref.

Schematics - [mm]



Environmental Data

- Operating temperature range: -40°C ~ +105°C (including coil's self temperature rise)
- Storage temperature range: -40°C ~ +105°C

Packaging

- Pallet packaging.

Applications

- Ideally used in Digital amplifier filter in car audio, home theater and large LCD etc.

Electrical Characteristics

Part No.	Stamp	Inductance [within] ※1	D.C.R. (mΩ) [Max.] (at 20°C)	Saturation Current (A) (at 20°C) ※2	Temperature rise current (A) ※3
DEP1016NP-5R0PB	5R0	5.0μH ± 25%	5.1	18.2	14.1
DEP1016NP-100PB	100	10.0μH ± 25%	9.1	13.4	11.5
DEP1016NP-150PB	150	15.0μH ± 25%	9.1	8.7	11.5
DEP1016NP-180PB	180	18.0μH ± 25%	10.1	7.9	9.8
DEP1016NP-220PB	220	22.0μH ± 25%	11.4	7.2	8.5
DEP1016NP-270PB	270	27.0μH ± 25%	13.8	6.6	7.5
DEP1016NP-330PB	330	33.0μH ± 25%	15.0	5.8	7.3

※1. Measuring condition: at 1kHz.

※2. Saturation current: The value of D.C. current when the inductance decreases to 75% of its nominal value.

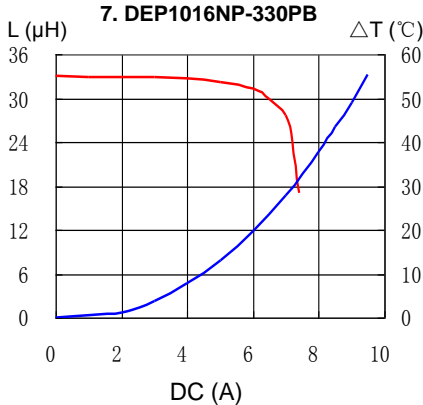
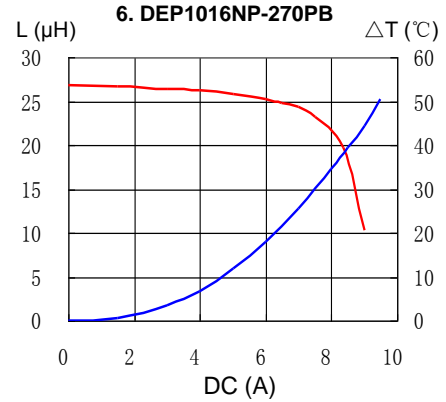
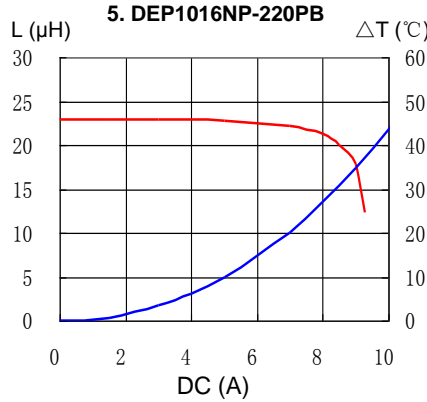
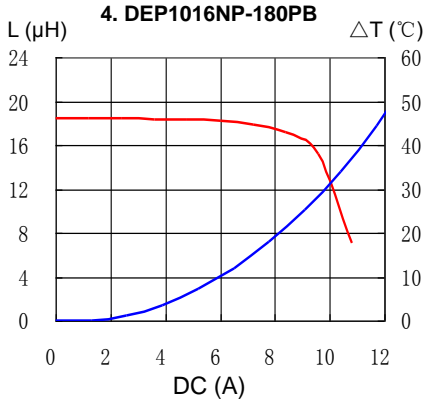
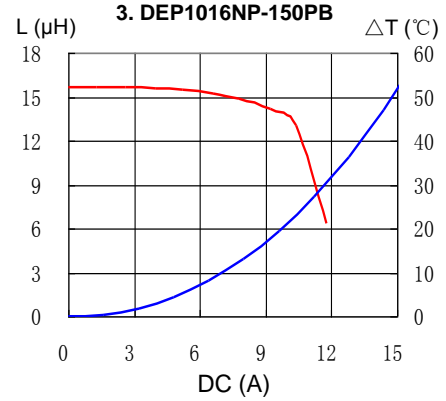
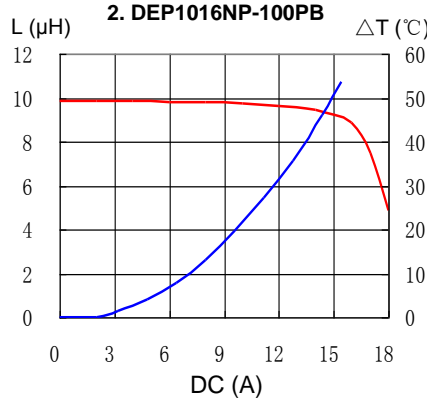
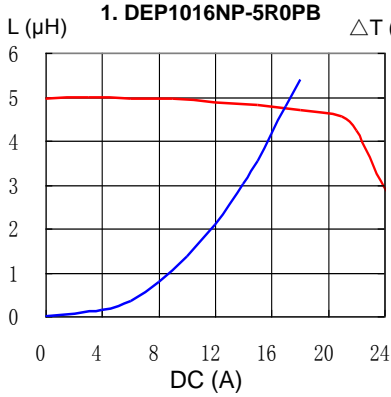
※3. Temperature rise current: The value of D.C. current when the temperature rise is Δt=40°C (Ta=20°C).

PIN Power Inductor DEP1016



Saturation Current & Temperature Rise Graph

— L (20°C) — ΔT



Please refer to the sales offices on our website - <http://www.sumida.com>

Hong Kong

Tel.+852-2880-6781
FAX.+852-2565-9600
sales@hk.sumida.com

Saitama(Japan)

Tel.+81-48-691-7300
FAX.+81-48-691-7340
sales@jp.sumida.com

Chicago

Tel.+1-847-545-6700
FAX. +1-847-545-6720
sales@us.sumida.com

Shanghai

Tel.+86-21-5836-3299
FAX.+86-21-5836-3266
shanghai.sales@cn.sumida.com

Seoul

Tel.+82-2-6237-0777
FAX.+82-2-6237-0778
sales@kr.sumida.com

Obernzell

Tel.+49-8591-937-0
FAX. +49-8591-937-103
contact@eu.sumida.com

Shenzhen

Tel.+86-755-8291-0228
FAX.+86-755-8291-0338
shenzhen.sales@cn.sumida.com

Singapore

Tel.+65-6296-3388
FAX.+65-6841-4426
sales@sg.sumida.com

Neumarkt

Tel.+49-9181-4509-110
FAX. +49-9181-4509-310
infocomp@eu.sumida.com

Taipei

Tel.+886-2-8751-2737
FAX.+886-2-8751-2738
sales@tw.sumida.com

San Jose

Tel.+1-408-321-9660
FAX.+1-408-321-9308
sales@us.sumida.com

X-ON Electronics

Largest Supplier of Electrical and Electronic Components

Click to view similar products for [Fixed Inductors](#) category:

Click to view products by [Sumida](#) manufacturer:

Other Similar products are found below :

[CR43NP-680KC](#) [CR54NP-470LC](#) [CR54NP-820KC](#) [CR54NP-8R5MC](#) [70F224AI](#) [MGDQ4-00004-P](#) [MHL1ECTTP18NJ](#) [MHQ1005P10NJ](#)
[MHQ1005P1N0S](#) [MHQ1005P2N4S](#) [MHQ1005P3N6S](#) [MHQ1005P5N1S](#) [MHQ1005P8N2J](#) [PE-51506NL](#) [PE-53601NL](#) [PE-53602NL](#) [PE-](#)
[53630NL](#) [PE-53824SNLT](#) [PE-92100NL](#) [PG0434.801NLT](#) [PG0936.113NLT](#) [9220-20](#) [9310-16](#) [PM06-2N7](#) [PM06-39NJ](#) [A01TK](#) [1206CS-](#)
[471XJ](#) [HC2LP-R47-R](#) [HC2-R47-R](#) [HC3-2R2-R](#) [HC3-R50-R](#) [HC8-1R2-R](#) [HCF1305-3R3-R](#) [1206CS-151XG](#) [RCH664NP-140L](#) [RCH664NP-](#)
[4R7M](#) [RCH8011NP-221L](#) [RCP1317NP-332L](#) [RCP1317NP-391L](#) [RCR1010NP-470M](#) [RCR110DNP-331L](#) [DH2280-4R7M](#) [DS1608C-106](#)
[ASPI-4020HI-R10M-T](#) [B10TJ](#) [B82498B3101J000](#) [ELJ-RE27NJF2](#) [1812CS-153XJ](#) [1812CS-183XJ](#) [1812CS-223XJ](#)