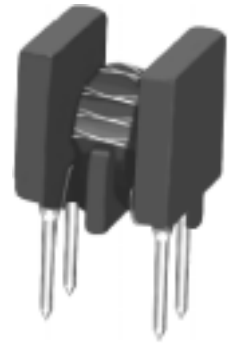
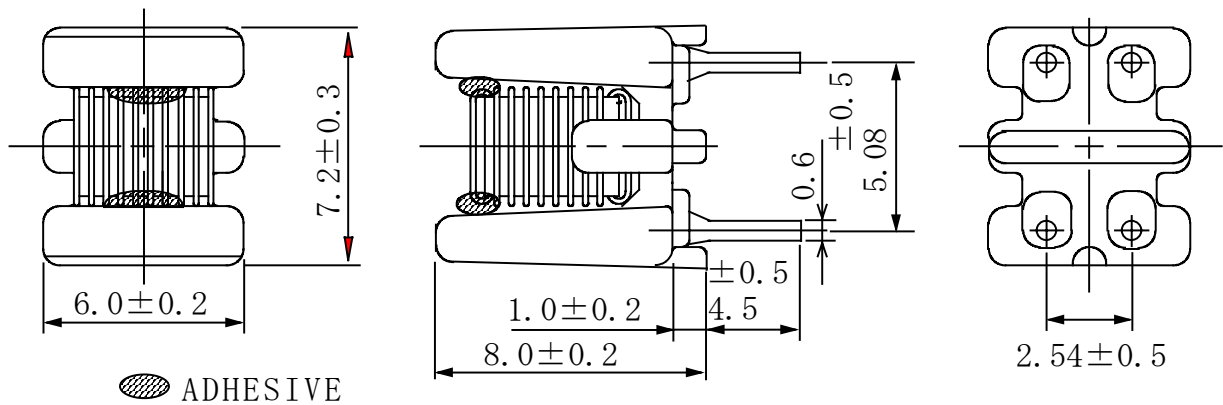


Type: SFC68
◆ Product Description

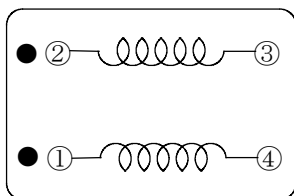
- 7.5×6.2mm Max.(L×W), 8.2mm Max. Height .
- Inductance Range: 5.3 μ H~28.2 μ H
- Rated current range: 0.6~2.9A
- In addition to the standard versions of parameters shown here, custom designs are available to meet your exact requirements.


◆ Feature

- Ideally used as signal noise filter common mode chokes for I/O port of PC,micro-computer,and related terminal equipment of better characteristics in high frequency range.
- RoHS Compliance

◆ Dimensions (mm)


- * Dimension does not include solder used on coil.
- * Terminal pitch is measured at the base(not from tip of the pin)

◆ Schematics (Bottom)


● MARKING OF POLARITY

Type: SFC68
◆ Specification

Part name	Stamp	Inductance at 1 MHz (μ H) 〔 1-4 〕 〔 2-3 〕	Impedance (Ω) MIN. 〔 1-4 〕 〔 2-3 〕		D.C.R. (m Ω) <TYP.>	Rated Current (A)※1	Insulation Resistance (Coil-coil) D.C.250V (M Ω) MIN.
SFC68NP-PN08	P08	5.3	1100 (80MHz~ 100MHz)	200 (10MHz)	67.5	1.05	10
SFC68NP-PN10	P10	8.0	1200 (80MHz~ 100MHz)	350 (10MHz)	82.5	0.82	10
SFC68NP-PN12	P12	11.5	1050 (80MHz~ 100MHz)	550 (10MHz)	100.5	0.68	10
SFC68NP-PN14	P14	15.7	650 (80MHz~ 100MHz)	750 (10MHz)	114.0	0.60	10
SFC68NP-WN08	W08	39.5	850 (30MHz~ 100MHz)	650 (10MHz)	64.9	1.30	10
SFC68NP-WN10	W10	60.7	1050 (30MHz~ 100MHz)	1050 (10MHz)	80.0	1.15	10
SFC68NP-WN12	W12	87.5	1100 (30MHz~ 100MHz)	1500 (10MHz)	94.5	1.08	10
SFC68NP-WN14	W14	121.5	1100 (30MHz~ 100MHz)	2100 (10MHz)	110.0	0.95	10
SFC68NP-WNB04	B04	4.3	110 (10MHz) 200 (100MHz)	150(30MHz) 250(300MHz)	19.5	2.90	10
SFC68NP-WNB06	B06	9.5	250 (10MHz) 500 (100MHz)	400(30MHz) 300(300MHz)	25.5	1.80	10
SFC68NP-WNB08	B08	17.2	450 (10MHz) 700 (100MHz)	750(30MHz) 300(300MHz)	33.5	1.50	10
SFC68NP-WNB10	B10	28.2	750 (10MHz) 800 (100MHz)	1150(30MHz) 250(300MHz)	41.5	1.05	10

※1. Rated current: The DC current at which the temperature rise is $\Delta t=40^{\circ}\text{C}$. ($T_a=20^{\circ}\text{C}$).

X-ON Electronics

Largest Supplier of Electrical and Electronic Components

Click to view similar products for [GPS Modules](#) category:

Click to view products by [Sumida](#) manufacturer:

Other Similar products are found below :

[ISM3333-C6.1](#) [GPS-11858](#) [SL871GPS232R001](#) [M20050-1](#) [M20048-1](#) [NEO-M8M-0](#) [NEO-M8P-0](#) [WISE-4610P-NA](#) [M10578-A2](#) [M10578-A3](#) [DPX252690DT-5031G1](#) [CMM21T-900M-N](#) [TEL0132](#) [GPS-13740](#) [PKG300060P](#) [RXM-GPS-F4-T](#) [A1084-A](#) [A5100-A](#) [MIKROE-4150](#) [28504](#) [L26ADR-S89](#) [L26-M33](#) [L26T-S89](#) [L70B-M39](#) [L76LB-A31](#) [L76L-M33](#) [L80-M39](#) [L86-M33](#) [L89-S90](#) [L96-M33](#) [SFC68NP-WN12](#) [GPS-13670](#) [SWI0805UF-R68J](#) [GYSFFMAXB](#) [GYSFFMAXC](#) [TFSC062495-6110A2](#) [EVA-M8Q-0](#) [2613011037000](#) [2614011037000](#) [2614021137000](#) [MTi-680](#)