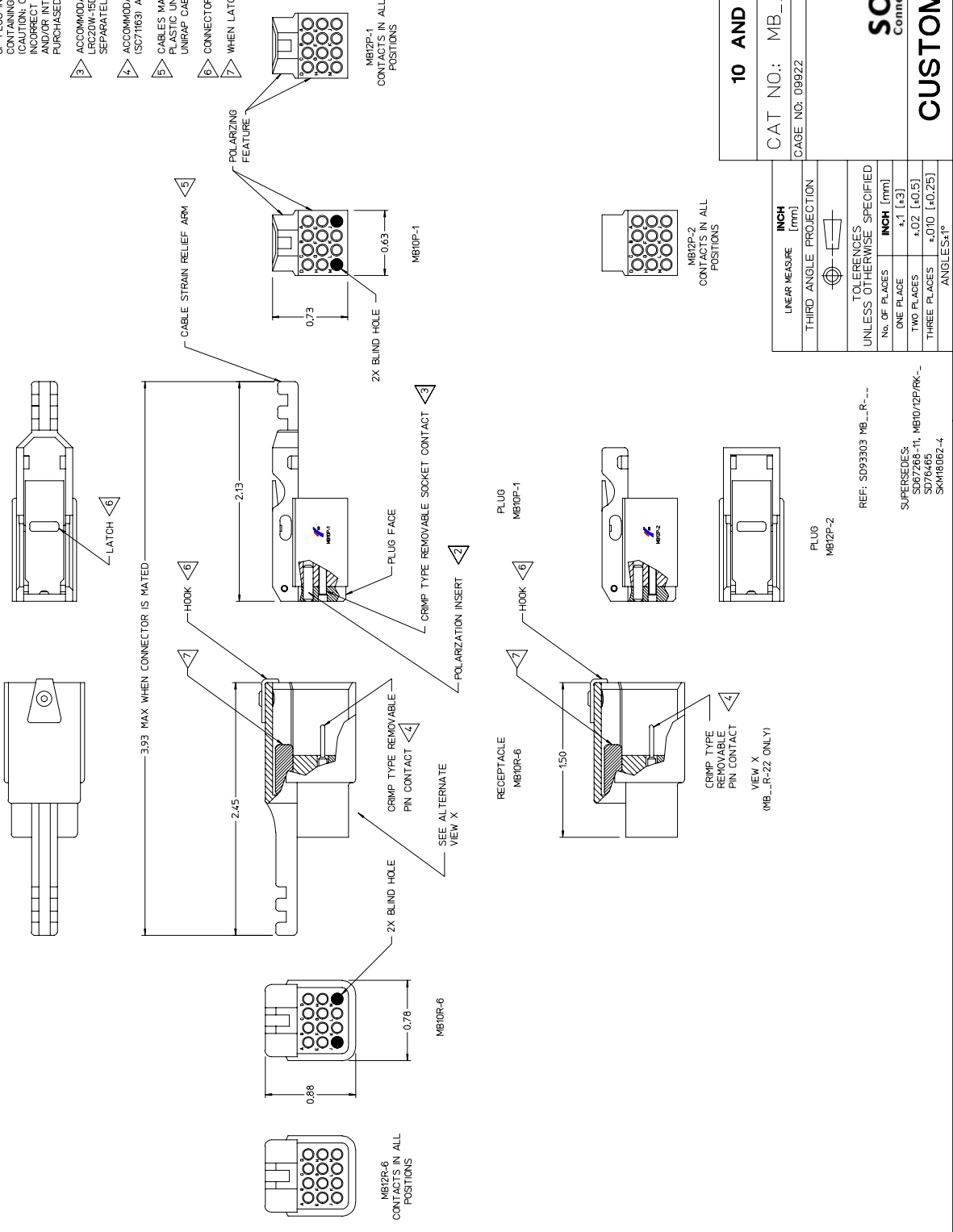


NOTES - UNLESS OTHERWISE SPECIFIED

- 1 INTERPRET THIS DRAWING IN ACCORDANCE WITH ANSI Y14.5M - 1982
- 2 POLARIZATION INSERTS MBP20-1 (S093993) MAY BE INSTALLED THRU RUBBER FACE OF PLUG IN ANY CONTACT POSITION TO PREVENT MATING WITH ANY RECEPTACLE OF PLUG IN ANY CONTACT POSITION. POLARIZATION INSERTS ARE SUPPLIED AS SEPARATE ITEMS. POLARIZATION INSERTS SHOULD BE PURCHASED SEPARATELY. (CAUTION: OVER INSERTION OF POLARIZATION INSERT OR ATTEMPTS TO MATE INCORRECT RECEPTACLE/PLUGS USING EXCESSIVE FORCE MAY DAMAGE PIN CONTACT AND/OR INTERNAL CONTACT RETENTION SPRINGS) POLARIZATION INSERTS TO BE PURCHASED SEPARATELY.
- 3 ACCOMMODATES THE FOLLOWING SOCKET CONTACTS: LRC20W-28D.5 (S090979), LRC20W-15D.5 (S064628) AND LRC16W-2DE5 (S052452). CONTACTS TO BE PURCHASED SEPARATELY.
- 4 ACCOMMODATES THE FOLLOWING PIN CONTACTS: LRC20W-28D.5 (S090962), LRC20W-15D.5 (S07183) AND LRC16W-2DE5 (S052453). CONTACTS TO BE PURCHASED SEPARATELY.
- 5 CABLES MAY BE ATTACHED TO EITHER POINT ON CABLE STRAIN RELIEF ARM WITH BURNDY PLASTIC UNIRAP CABLE STRAP, TF3 (S065082) OR EQUIVALENT M517821-4, PLASTIC UNIRAP CABLE STRAP TO BE PURCHASED SEPARATELY.
- 6 CONNECTOR IS FULLY MATED WHEN HOOK ENTERS SLOT IN LATCH.
- 7 WHEN LATCH IS DEPRESSED, RUBBER LATCH RELEASE PREVENTS RELOCKING.



MATERIAL:
CONNECTOR BODY - NYLON MIL-M-20683A, TYPE III,
CLASS E, COLOR NATURAL)
LOCKING HARDWARE - STAINLESS STEEL
PLUG FACE - NEOPRENE

REV	DESCRIPTION	BY	CHKD	DATE
N	REVISED PER ECN5398	JRD	SDH	10-19-01
13	REVISED PER ECN1269	JJD	SP	05-22-89
12	REVISED PER ECN1184	JJM	PJT	07-15-88

10 AND 12 POSITION SEAT CONNECTOR

CAT NO.: MB_P/R-- (SEE DWG)

CAGE NO: D8922	SIZE: B
APPROVAL	
DRAWN: JIM	04-04-86
CHKD: VCE	04-07-86
DSGN: SFP	04-07-86
MFG: JLM	04-07-86
QC: XXX	XX-XX-XX
DRAWING SCALE: 2 : 1	REV
DRAWING NO.	REV
SE67268	N
SHEET 1 OF 1	



CUSTOMER

LINEAR MEASURE	INCH	mm
THIRD ANGLE PROJECTION		
TOLERANCES UNLESS OTHERWISE SPECIFIED		
No. OF PLACES	INCH	(mm)
ONE PLACE	±.1 (.3)	
TWO PLACES	±.02 (.05)	
THREE PLACES	±.010 (.025)	
ANGLES ±1°		

REF: S093303 MB_P/R--

SUPERSEDES:
S07268-11, MB10/2P/RK--
S070468
S081602-4

X-ON Electronics

Largest Supplier of Electrical and Electronic Components

Click to view similar products for [Circular MIL Spec Connector](#) category:

Click to view products by [Sunbank](#) manufacturer:

Other Similar products are found below :

[0025-262-542](#) [0025-264-3014](#) [58-570121-04S](#) [0134-202-1200](#) [0134-207-1206](#) [0134-207-1800](#) [0134-207-2207](#) [0134-213-0806](#) [0134-213-1007](#) [0134-213-1009](#) [0134-213-1208](#) [0134-213-1800](#) [0134-213-2209](#) [0025-258-000](#) [015-9516-002](#) [60-042217-10P](#) [60-042722-19P](#) [0114-201-1278](#) [602GB06EG24-61SN](#) [0134-201-1207](#) [0134-201-1806](#) [0134-201-2006](#) [0134-201-2007](#) [0134-201-2010](#) [0134-202-1400](#) [0134-207-0809](#) [0134-207-1208](#) [0134-207-2009](#) [0134-213-1006](#) [6104-207-2302](#) [6104-208-1902](#) [6104-215-0902](#) [6131-202-19149P](#) [6131-204-21149P](#) [6131-207-13149P](#) [6131-208-13149P](#) [6131-209-17149P](#) [6131-210-11149P](#) [6131-211-19149P](#) [6131-216-19149P](#) [6131-220-25149P](#) [6131-259-11149P](#) [6131-259-21149P](#) [6131-259-23149P](#) [6131-263-19149P](#) [6131-265-17149P](#) [6131-265-19149P](#) [CS3102A-20-15P](#) [CS3102A-20-15S](#) [CS3102A-28-15S](#)