

H G F E D C B A

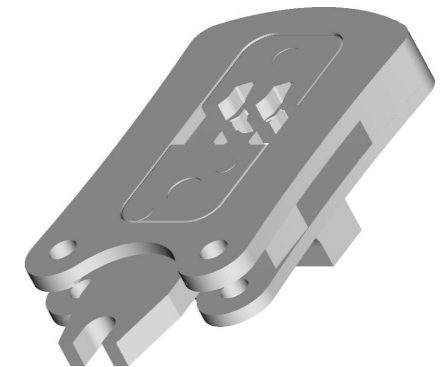
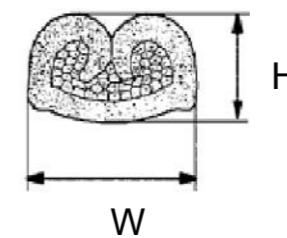
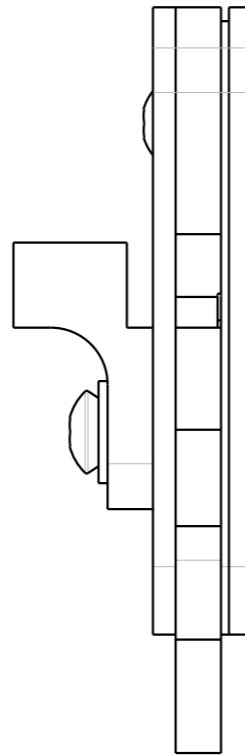
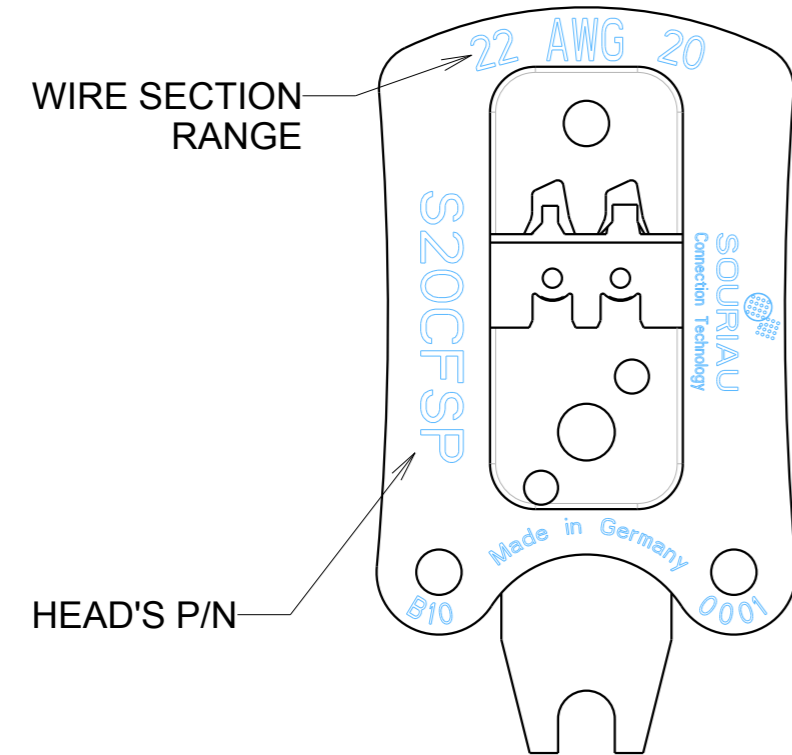
b : 1 ; RL

4

3

2

1



TECHNICAL CHARACTERISTICS :
 Contact positioning with locator
 Burnished surface
 Fully recyclable
 RoHS (Directive 2002/95/EG) compliant

Weight : approx. 115 g
 Height : approx. 65mm
 Width : approx. 37mm

(1) Nota : issued from IEC60352-2
 Individual packaging

Use with SHANDLES part number

P/N : SXXCFSP

ACTIVE CONTACT PART	CONTACT TYPE	DIE LOCATION ON HEADS	WIRE SECTION RANGE (1)	SECTION (mm ²) (1)	TENSILE STRAIGHT TEST (mini) (1)	HEIGHT (mm) H (±0.075)	WIDTH (mm) W (±0.075)	HEAD'S P/N
size 20	CF10PC10RF CF10SC10RF	22	AWG 22	0,32 min	40 N	0.95	1.50	S20CFSP
		20	AWG 20	0,60 max	72 N	1.00	1.55	
size 16	CF16PC10RF CF16SC10RF	19/18	AWG 19	0,70 min	80 N	1.30	2.00	S16CFSP
			AWG 18	0,82 max	90 N			
		16	AWG 16	1,5 max	150 N	1.35	2.10	
	CF16PC40RF CF16SC40RF	14	AWG 14	2,5 max	230 N	1.75	2.65	

b	02/11/11	Add height and width of crimped area		N° 22013
ISS	DATE	Latest modification - by: ROUILLARD Ch		MOD N°
Designed by: ROUILLARD Ch		Date: 25/10/11	CUSTOMER DRAWING	
TITLE		CLIPPER TOOLING CRIMPING TOOL'S HEAD FOR STAMPED AND FORMED CONTACTS		
Scale	1/1	General linear Tolerances: ± 0.2	NPRDS / PROJECT TOOLING	
		WWW.SOURIAU.COM		This document is the property of SOURIAU. It must not be reproduced or communicated without permission.
FORMAT	SOURIAU DRG N° SXXCFSP-C			SHEET
A3				1/1

NOT EXPORT CONTROLLED

H G F E D C B A

X-ON Electronics

Largest Supplier of Electrical and Electronic Components

Click to view similar products for [Crimpers / Crimping Tools](#) category:

Click to view products by [Sunbank](#) manufacturer:

Other Similar products are found below :

[010-0096](#) [M225201-06](#) [M225202-37](#) [6-1579015-5](#) [CT150-2-D02](#) [622-6441LF](#) [M322](#) [6-304052-1](#) [63456-0054](#) [63484-3701](#) [63800-8355](#)
[63819-1875](#) [63819-2875](#) [63819-4475](#) [63823-3475](#) [63827-5375](#) [64001-0975](#) [64001-4175](#) [64005-0175](#) [662903-2](#) [690602-6](#) [7-1579001-9](#) [7-](#)
[23471-1](#) [762637-1](#) [808714-1](#) [811242-5](#) [999-50-020083](#) [1-21002-3](#) [1-21002-7](#) [12085270](#) [1-21002-6](#) [1-21113-6](#) [1-22548-4](#) [125442-1](#)
[DCE.91.073.BVC](#) [DCE.91.090.3MVM](#) [DCE.91.130.5MVU](#) [DCE.91.202.BVCM](#) [1338300-1](#) [1-354003-0](#) [1338301-1](#) [DF62/RE-MD](#) [142321](#)
[1456088-1](#) [1490794-1](#) [1-45804-6](#) [1490357-2](#) [1490357-3](#) [AX100749](#) [1-59619-7](#)