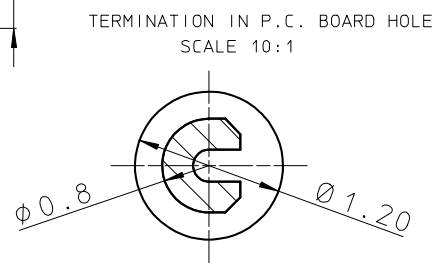
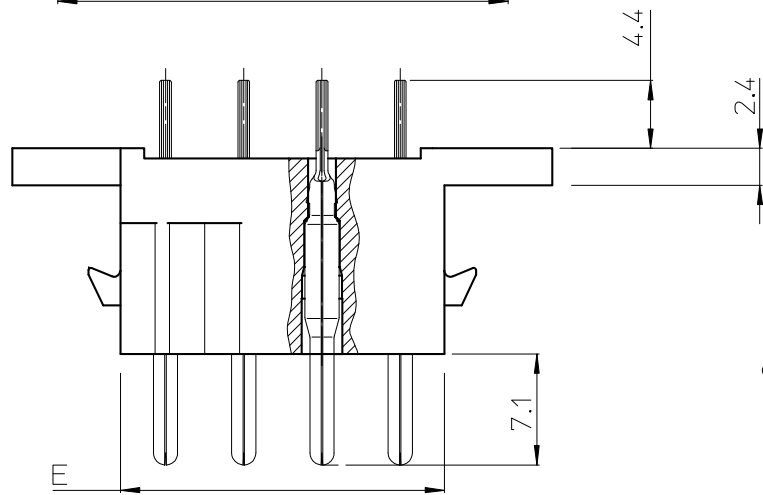
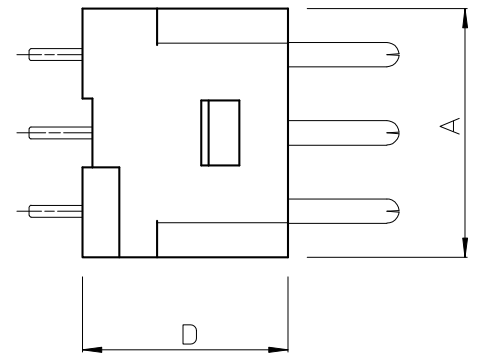
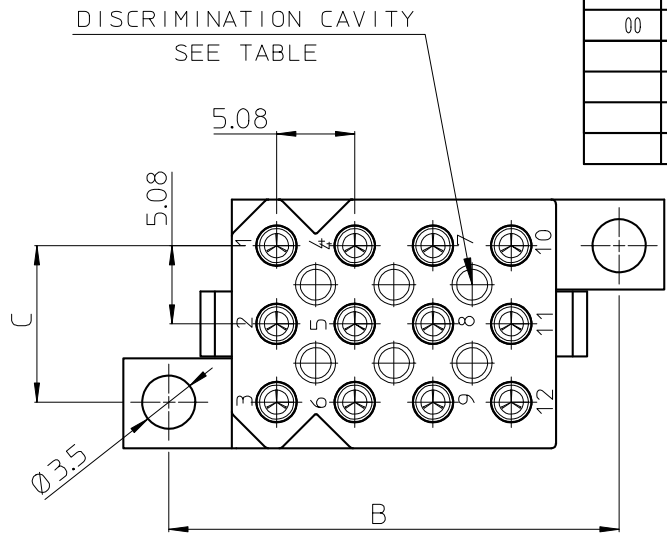


DIT IS ONZE EIGENDOM EN MAG NOCH NAGEMAAKT, HERDRUKT, OVERGEMAAKT AAN DERDEN, NOCH VOOR FABRIKATIE GEBRUIKT WORDEN, ZONDER ONZE SCHRIFTELIJKE TOELATING. BIJ NIET GEBRUIK IS DE TERUGZENDING VERPLICHT.

THIS IS OUR EXCLUSIVE PROPERTY. IT IS NOT TO BE COPIED, REPRINTED OR DISCLOSED TO A THIRD PARTY, NOR USED FOR MANUFACTURING WITHOUT OUR WRITTEN CONSENT, AND HAS TO BE RETURNED TO US IN CASE OF NO USAGE

REV.	DATE	DESCRIPTION	BY	C'K'D'
00	15/06/09	FIRST ISSUE	R Ch	



CAT. NR.	A	B	C	D	E	
SMS3RE4**	16.0	14.0	10.2	13.2	5.9	0
SMS4RE4**	21.1	14.0	15.2	13.2	5.9	0
SMS6RE4**	16.0	19.2	10.2	13.2	10.9	2
SMS12RE4**	16.0	29.2	10.2	13.2	21.1	6
SMS24RE4**	21.2	39.4	15.2	13.2	31.2	15

PERFORMANCE CHARACTERISTICS :
 OPERATING TEMPERATURE : -55°C TO 125°C
 INSULATING RESISTANCE : 5000 M Ohm MIN.
 TEST POTENTIAL : 2000 VAC
 CURRENT RATING : 5 AMP
 CONTACT RESISTANCE : 6 m Ohm MAX.

MATERIAL :
 HOUSING : GLASS REINFORCED POLYESTER UL94-V0, BLACK
 CONTACTS : STAMPED AND FORMED HIGH CONDUCTIVE Cu-ALLOY
 PLATING (**): S6 : GOLD IN CONTACT AREA 0.4 μ MIN.,
 Sn ON TERMINATION
 TR 29 : 3 - 5 μ Sn ALL OVER.

NOTES :
 CONNECTOR SUPPLIED FULLY LOADED.
 MATING PARTS : SMS--P1 (WITHOUT CABLE HOOD)
 SMS--PDH1 (WITH INTEGRATED CABLE HOOD)
 DRILLING HOLE PATTERN : SEE DRAWING BS,C ,201713,000
 DISCRIMINATION GARANTEED WITHOUT LOSS OF CONTACT POSITION WHEN USING SMSPK3
 DISCRIMINATION PINS. FOR TECHNICAL INFORMATION ABOUT SMSPK3 : SEE BS,C ,201424,003.

BS, A , 203066 , 002 , 00

GEN. ST.	01	02	03	04	05	06	07	08	0D	50	60	70	80	90																	
INT. ST.	10	11	12	13	14	18	20	31	32	33	34	38	39	40	42	43	44	45	46	48	56	70	72	73	75	76	81	82	83	84	88

1DEC ±0,2 2DEC ±0,1 ANGLES ±1° HOEKEN	APPR.	DATE	SIGN.	STAMPED MALE QIKMATE STRAIGHT RECEPTACLE
WE RESERVE THE RIGHT TO CHANGE DIMENSIONS OR REQUIREMENTS WITHOUT PRIOR NOTICE.	DRAFT	15/06/09	ROUILLARD Ch	CAT. No. SMS--RE4**
ALL DIMENSIONS IN MM	PROD. MGR.			SOURIAU Route Nationale 23 72470 CHAMPAGNE
ALLE AFMETINGEN IN MM	PR. ENG. MGR.			
	PR. MGT. MGR.			
	REFERENCES / REFERENTIES			BS, A , 203066 , 002 , 00 DRAWING NR. CUSTOMER DRAWING

X-ON Electronics

Largest Supplier of Electrical and Electronic Components

Click to view similar products for [Headers & Wire Housings](#) category:

Click to view products by [Sunbank](#) manufacturer:

Other Similar products are found below :

[892-18-020-10-001101](#) [58102-G61-06LF](#) [582553-1](#) [0009485154](#) [009176003701906](#) [0050291907](#) [LY20-4P-DT1-P1E-BR](#) [02.125.8002.8](#)
[609-3404](#) [61062-3](#) [61082-181009](#) [622-3653LF](#) [63453-116](#) [636-1030](#) [636-1427](#) [636-3427](#) [636-4007](#) [641938-9](#) [641991-4](#) [644827-2](#) [65817-](#)
[010LF](#) [65817-015LF](#) [65863-015LF](#) [66207-023LF](#) [67095-007LF](#) [67601157](#) [68645-018](#) [68648-049](#) [70.362.1628.0](#) [70-4210](#) [70-4226B](#) [70-](#)
[4853B](#) [707-5020](#) [707-5028](#) [71.350.2428.0](#) [71918-208LF](#) [71961-016LF](#) [733-134](#) [733-162](#) [754199-000](#) [760-3052](#) [787-8014-00](#) [79531-3000](#)
[FCN-360C032-B](#) [FCN-367T-T012/H](#) [FCN-723D010/2](#) [80.063.4001.1](#) [800-90-001-10-001000](#) [800-90-010-10-002000](#) [801-43-002-10-013000](#)