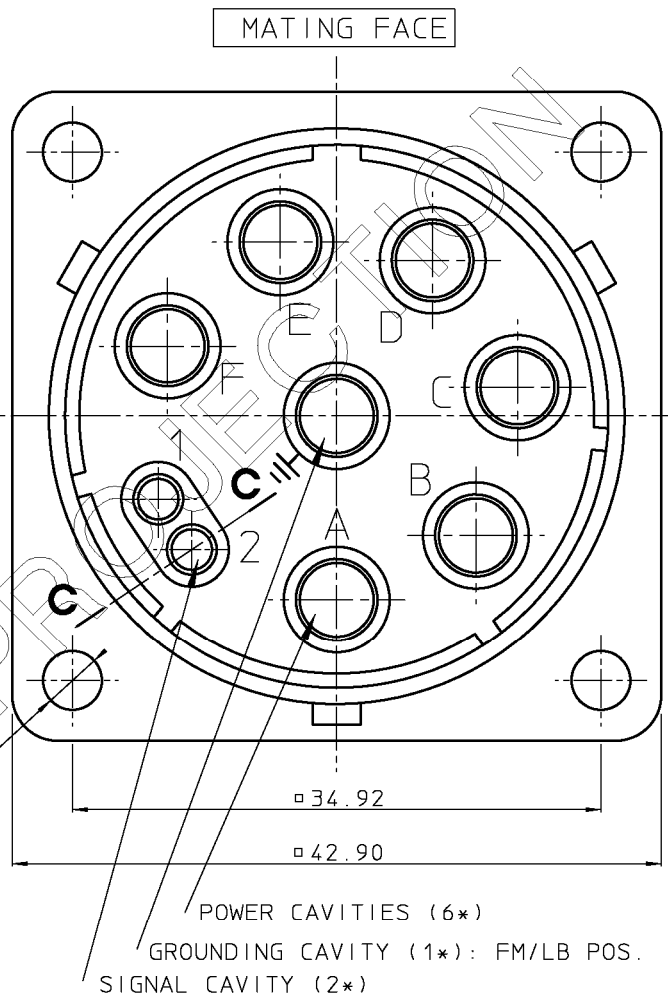
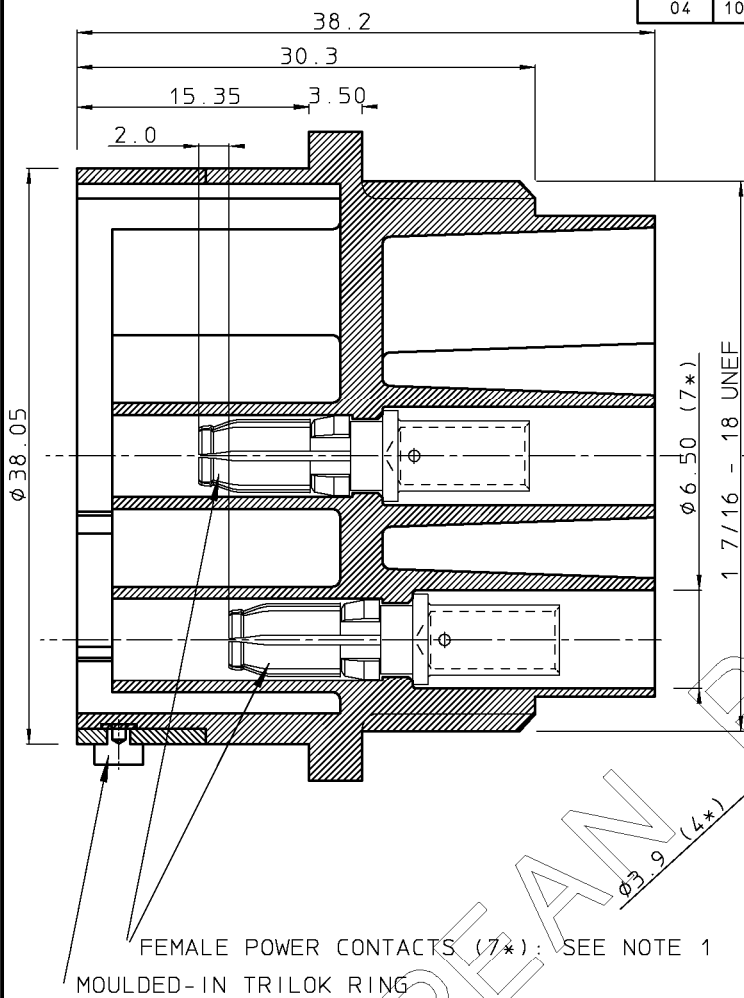


DIT IS ONZE EIGENDOM EN MAG NOCH NAGEMAAKT, HERDRUKT, OVERGEHAKT AAN DERDEN, NOCH VOOR FABRIKATIE GEBRUIKT WORDEN, ZONDER ONZE SCHRIFTELIJKE TOELATING. BIJ NIET GEBRUIK IS DE TERUGZENDING VERPLICHT.

THIS IS OUR EXCLUSIVE PROPERTY. IT IS NOT TO BE COPIED, REPRINTED OR DISCLOSED TO A THIRD PARTY, NOR USED FOR MANUFACTURING WITHOUT OUR WRITTEN CONSENT, AND HAS TO BE RETURNED TO US IN CASE OF NO USAGE

REV.	DATE	DESCRIPTION	BY	C'K'D'
01	6-2-91	BEC 9.3036: DIM 30.3 WAS 38.2	M B	
02	03-09-92	CAV. DIA. ENLARGED	Y.D.	
03	10-03-99	CONVERSION ME10	K.N.	
04	10-03-99	TEMPERATURE RANGE -55C INSTEAD OF -25C	K.N.	



PERFORMANCE CHARACTERISTICS

- OPERATING TEMPERATURE : -55 °C TO +125 °C.
- INSULATION RESISTANCE : 5000 M Ω MIN.
- TEST POTENTIAL : 2000 V EFF.
- CONNECTOR AS PER VDE 0110 GROUPE 660V

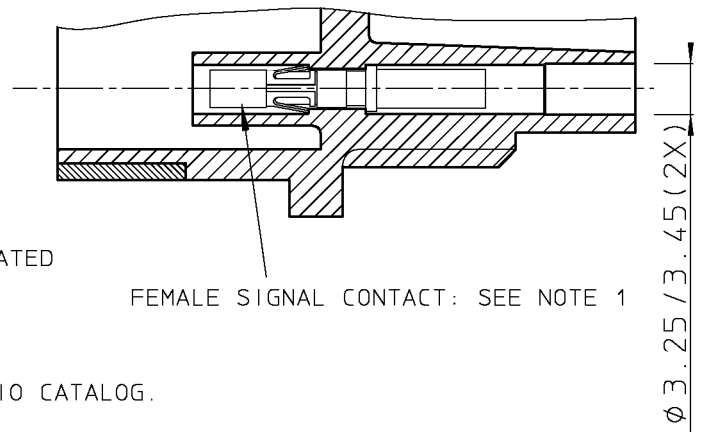
MATERIAL

- BODY : GLASS-FILLED POLYESTER UL94-V0. COLOUR : BLACK.
- TRILOK RING: HIGH STRENGTH CUZN ALLOY, NI PLATED

NOTES

- CONTACTS TO BE ORDERED SEPARATELY
- FOR ADDITIONAL INFORMATION REFER TO TRIM-TRIO CATALOG.
- CONNECTOR TO BE MATED WITH UTG6247PN

SECTION CC



FEMALE SIGNAL CONTACT: SEE NOTE 1

04

BS, A , 201178, 002

GEN. ST.	01	02	03	04	05	06	07	08	0D	50	60	70	80	90																	
INT. ST.	10	11	12	13	14	18	20	31	32	33	34	38	39	40	42	43	44	45	46	48	56	70	72	73	75	76	81	82	83	84	88

1DEC $\pm 0,2$ 1DEC 2DEC $\pm 0,1$ 2DEC ANGLES $\pm 1^\circ$ HOEKEN	APPR.	DATE	SIGN.	FEMALE RECEPTACLE	
WE RESERVE THE RIGHT TO CHANGE DIMENSIONS OR REQUIREMENTS WITHOUT PRIOR NOTICE.	DRAFT	26-9-90	M BUEDS	CAT. No. UTG0247S	
ALL DIMENSIONS IN MM	PROD. MGR.			 SOURIAU Route Nationale 23 72470 CHAMPAGNE	SCALE
ALLE AFMETINGEN IN MM	PR. ENG. MGR.				BS, A , 201178, 002
	PR. MGT. MGR.			DRAWING NR.	REVISTON
	REFERENCES / REFERENTIES			NOT EXPORT CONTROLLED CUSTOMER DRAWING	

X-ON Electronics

Largest Supplier of Electrical and Electronic Components

Click to view similar products for [Standard Circular Connector](#) category:

Click to view products by [Sunbank](#) manufacturer:

Other Similar products are found below :

[5M2530B10P](#) [600259N006](#) [600273N007](#) [6134-336-13149](#) [6134-337-11149](#) [6134-337-2390](#) [6134-341-17149](#) [6280-4SG-516](#) [6280-7SG-3DC](#)
[6290](#) [6291A](#) [66200A-10](#) [680-SMG](#) [681-PMG](#) [CXS3102A14S2P](#) [CXS3102A181S](#) [7271-6SG-300](#) [7282-3PG-300-CH3](#) [75-474014-05S](#) [75-](#)
[474618-01S](#) [75-474618-04P](#) [75-474618-04S](#) [799539-000](#) [MI8-SE](#) [805-005-07NF11-19PC](#) [805-005-07NF15-7PA](#) [8280-4PG-516](#) [8280-7PG-](#)
[519](#) [8282-5PG-519](#) [836783-1](#) [MP-4102-25P-C](#) [862256-1](#) [864019-2](#) [866857-1](#) [867865-1](#) [PT01SP-14-18P](#) [PT08P-14-5S](#) [120-1833-000](#)
[QCM019PC2DC012B](#) [1-2069279-1](#) [121583-0217](#) [121667-0020](#) [129591AU](#) [1000B BULK](#) [RD10A16-19-P6CS051/1](#) [RD10A20-31-](#)
[P8CS051/1](#) [RD16A14-12-S6CS051/2](#) [1301240290](#) [1301240347](#) [1301860202](#) [1301240268](#)