

f; 0; RL

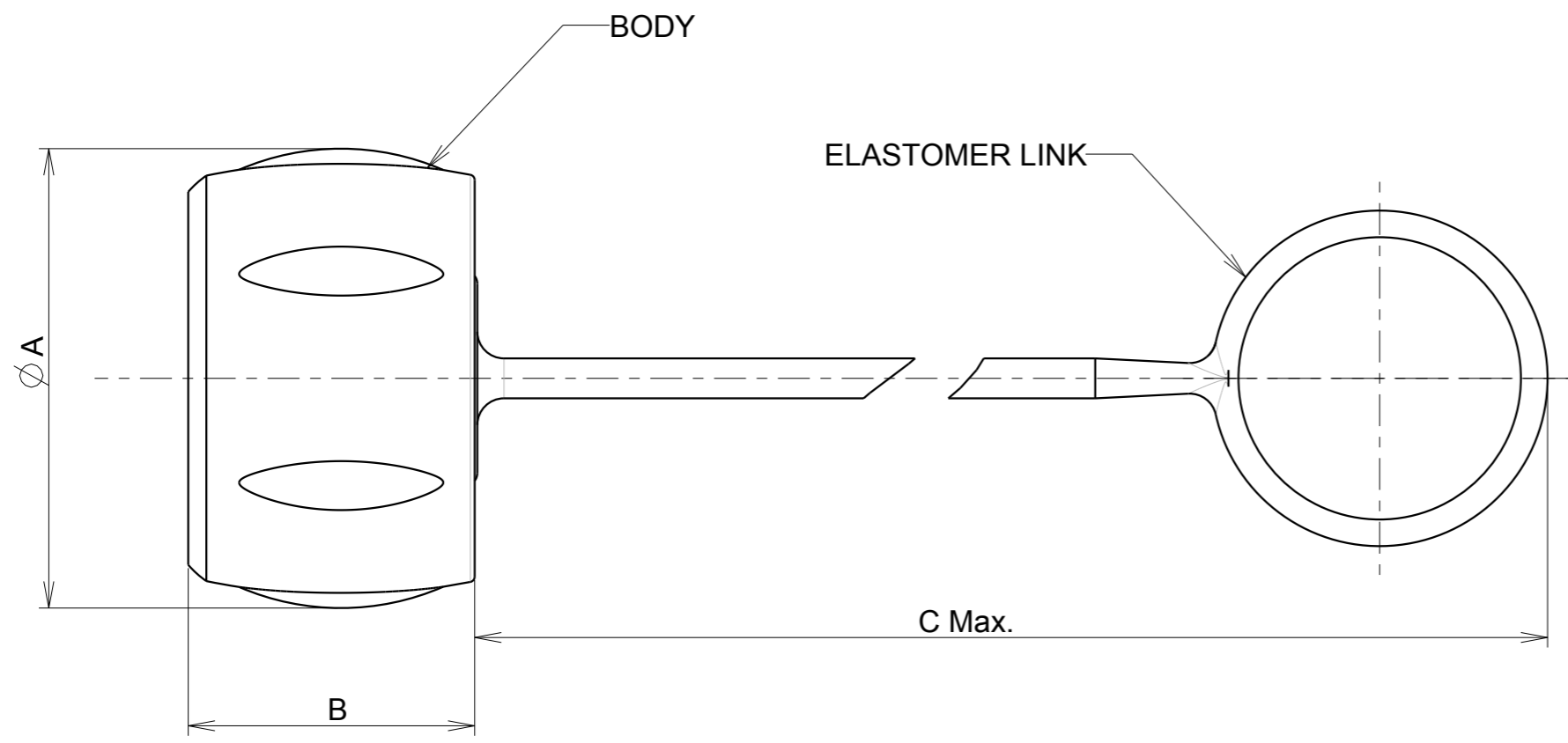
**MATERIAL:**

Body : Polyamid UL94 V-0

Elastomer link: Elastomer□□

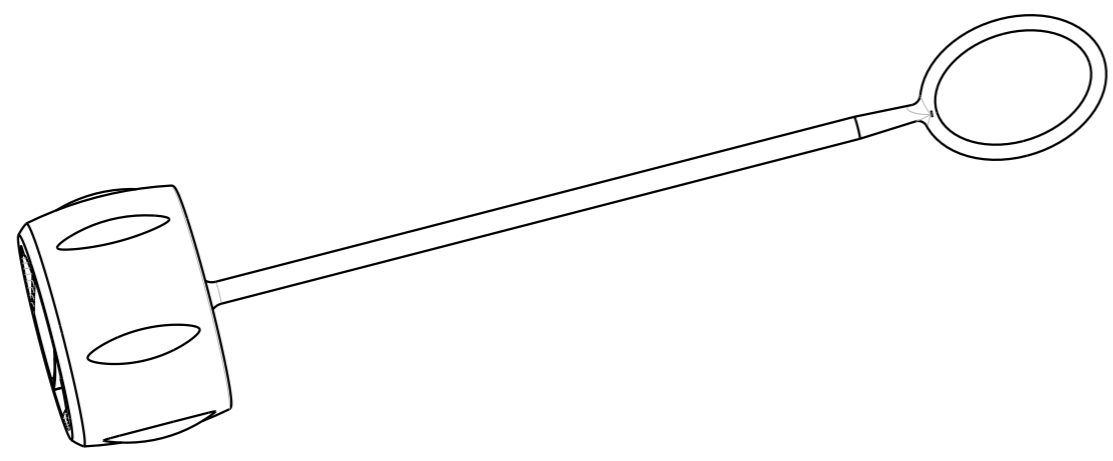
**NOTES :**

- Operating temperature : -40° up to +105°
- This cap is a water and dust protected version.
- Level sealing : IP68 (1bar during 1 week)



PART NUMBER	∅ A	B	C max.
UTS8DCG	22.10	16.50	99 Max
UTS10DCG	26.20	18.40	121 max.
UTS12DCG	29.70	19.60	123 max.
UTS14DCG	34.60	21.50	125 max.
UTS18DCG	42	23	132 max.

**P/N : UTSXXDCG**



f	21/06/2013	Modification of sealing level		22980
ISS	DATE	Latest modification - by: BERTHOME A.		MOD N°
Designed by: <i>SORIN V</i>		Date: 19/04/06	CUSTOMER DRAWING	
TITLE		UTS RECEPTACLE SEALING CAP WITH ELASTOMER LINK		
Scale	2/1		General linear Tolerances: ± 0.4	NPRDS / PROJECT <b>UTS1</b>
<b>SOURIAU</b>		<b>WWW.SOURIAU.COM</b>		This document is the property of SOURIAU It must not be reproduced or communicated without permission
FORMAT	<b>A3</b>	SOURIAU DRG N° <b>C003-UTS1-A</b>		SHEET 1/1

NOT EXPORT CONTROLLED

## X-ON Electronics

Largest Supplier of Electrical and Electronic Components

*Click to view similar products for [Standard Circular Connector](#) category:*

*Click to view products by [Sunbank](#) manufacturer:*

Other Similar products are found below :

[5M2530B10P](#) [600259N006](#) [600273N007](#) [6134-336-13149](#) [6134-337-11149](#) [6134-337-2390](#) [6134-341-17149](#) [6280-4SG-516](#) [6280-7SG-3DC](#)  
[6290](#) [6291A](#) [66200A-10](#) [680-SMG](#) [681-PMG](#) [CXS3102A14S2P](#) [CXS3102A181S](#) [7251-5SG-300](#) [7271-6SG-300](#) [7282-3PG-300-CH3](#) [75-](#)  
[474618-01S](#) [75-474618-04P](#) [75-474618-04S](#) [799539-000](#) [MI8-SE](#) [805-005-07NF11-19PC](#) [805-005-07NF15-7PA](#) [8280-4PG-516](#) [8280-7PG-](#)  
[519](#) [8282-5PG-519](#) [836783-1](#) [MP-4102-25P-C](#) [862256-1](#) [864019-2](#) [866857-1](#) [867865-1](#) [PT01SP-14-18P](#) [PT08P-14-5S](#) [PTSF06SE-14-12S](#)  
[120-1833-000](#) [QCM019PC2DC012B](#) [1-2069279-1](#) [121583-0217](#) [121667-0020](#) [129591AU](#) [1000B BULK](#) [RD10A16-19-P6CS051/1](#)  
[RD10A20-31-P8CS051/1](#) [RD16A14-12-S6CS051/2](#) [1301240290](#) [1301240347](#) [1301860202](#)