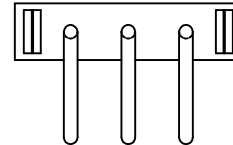
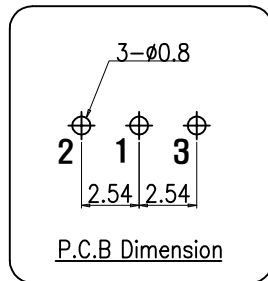
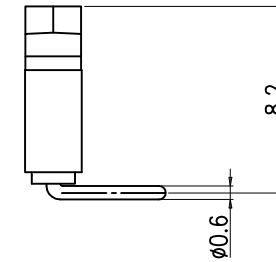
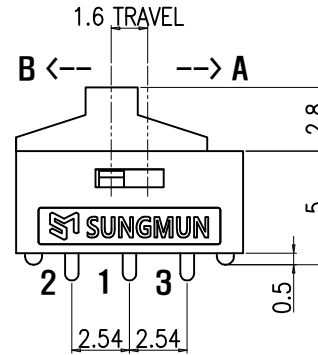
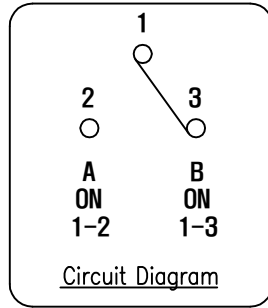
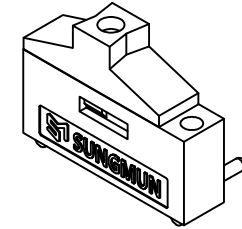
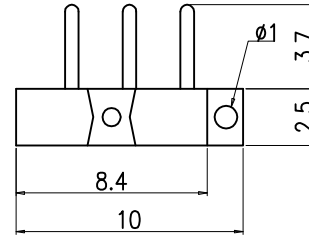


REV NO.	DATE	REVISION	DR	CH	APP

SPECIFICATION

1. Rating : DC12V 0.5A~24V 0.3A.
2. Contact Resistance : 30mΩ Max.
3. Travel : 1.6mm.
4. Operating Force : 250 ± 150gf.
5. Life Cycle : 2,000 Cycle (with load).



DRAW/DESIGNED	CHECKED	APPROVED		G.TOL ±0.3	TITLE	MINI SLIDE SWITCH	
H.S LEE	K.N KIM	W.J LEE		UNIT	SCALE	MODEL NO.	SSIL-10H-0RK
2022-12-06	2022-12-06	2022-12-06	mm	N:S			
				SIZE	DRAW NO.	SSIL-10H-0K-01	01
				A4			

X-ON Electronics

Largest Supplier of Electrical and Electronic Components

Click to view similar products for [Slide Switches](#) category:

Click to view products by [Sungmun](#) manufacturer:

Other Similar products are found below :

[6-1437581-1](#) [M43R](#) [MHS123K15D](#) [MHS133K](#) [MMD](#) [MSS12A](#) [1825074-1](#) [1825160-3](#) [1825167-2](#) [1825289-7](#) [25139NLDB](#) [25449NAH](#)
[SLB1240R45](#) [1825078-1](#) [1825080-4](#) [1825269-1](#) [1825270-2](#) [STS141RA04](#) [GH46P000001](#) [GH49P010001](#) [M42A](#) [AYZ0202AG](#)
[L203091MS02Q](#) [4-1437581-7](#) [48BFSP3M2QT](#) [1101M1S3ZB8E2](#) [1-1437581-1](#) [EG1218REDACTUATOR](#) [MSS2225G04](#) [MSS42G](#)
[T105S1CWZBE](#) [SLB124145](#) [SLB1280R5](#) [TG39W000050](#) [25149NAH](#) [25439NAH](#) [25436NAH6](#) [TG36Y000050](#) [NK236X693](#) [SL-](#)
[1211C1B8](#) [46204LRX](#) [1977143-4](#) [1977144-4](#) [HASS0194](#) [JS0001](#) [SSJ12R04](#) [GR5-1323-0800](#) [GH36Y410001](#) [S202041MS04Q](#) [25446NAB](#)