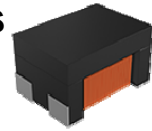


Wire Wound Chip Common Mode Choke Coil –AMCW-S Series

Operating Temp: -40°C~+125°C



FEATURES

- Small size, high reliability
- High quality, fast delivery, low cost
- Support vehicle signal transmission interface (USB2.0, USB3.0, HDMI2.0), support 3D transmission, meet higher resolution, refresh rate and color depth, support 1080P above playback
- AEC-Q200 verified

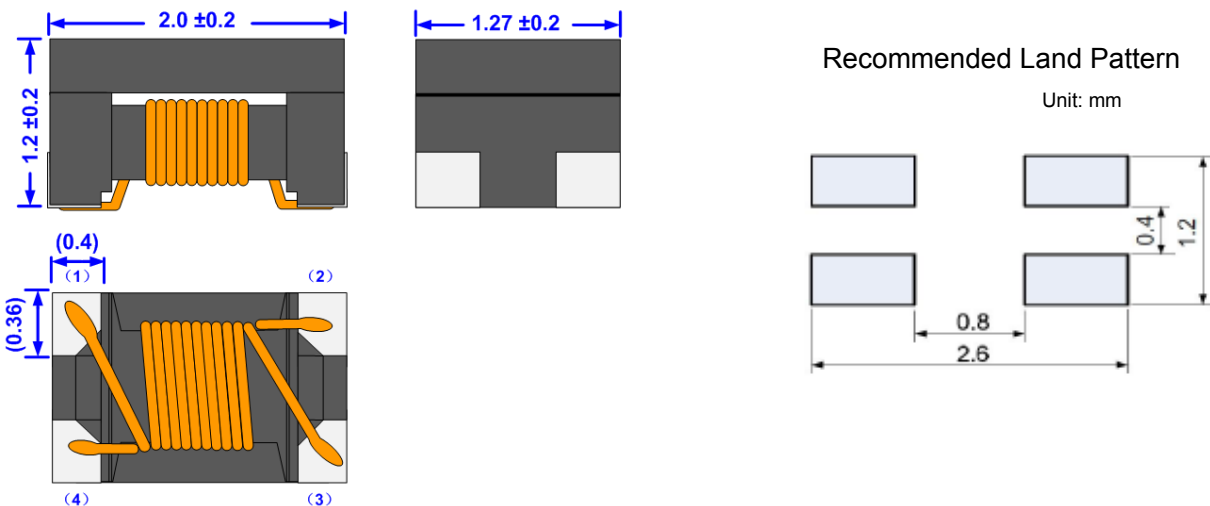
APPLICATIONS

- Automotive USB 2.0/HDMI signal transmission

PRODUCT IDENTIFICATION

<u>AMCW</u> ①	<u>2012</u> ②	<u>S</u> ③	<u>-2</u> ④	<u>-900</u> ⑤	<u>T</u> ⑥
①	②		③		④
	Type	External Dimensions (L×W) (mm)		Code	
AMCW	Winding Type Common Mode Choke Coil	2012 [0805]	2.0×1.2		S Signal
④	⑤		⑥		
Number of Lines	Nominal Impedance(Ω)		Packing		
2	Example Nominal Value		T Tape & Reel		
	670 67	900 90		181 180	
	361 360				

SHAPE AND DIMENSIONS



SPECIFICATIONS

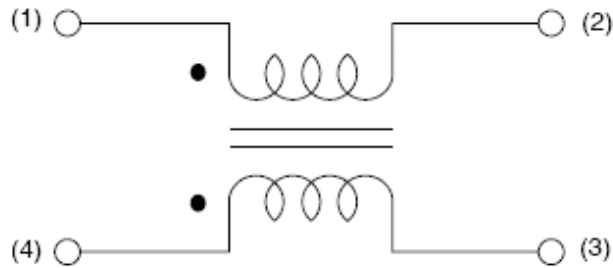
AMCW2012S TYPE

Part Number	Common Mode Impedance @ 100MHz	DC Resistance	Rated Current	Rated Voltage	Insulation Resistance
	±25%	Max.	Max.	Max.	Min.
Units	Ω	Ω	mA	Volts	M Ω
Symbol	Z	DCR	I _{rms}	V _{DC}	IR
AMCW2012S-2-670T	67	0.25	400	50	10
AMCW2012S-2-900T	90	0.35	330	50	10
AMCW2012S-2-181T	180	0.35	330	50	10
AMCW2012S-2-361T	360	0.45	280	50	10

1 .Storage temperature range (packaging conditions): -10°C~+40°C and RH 70% (Max.)

※: Products with other electrical characteristics can be provided upon customer's request. Please contact your local sales.

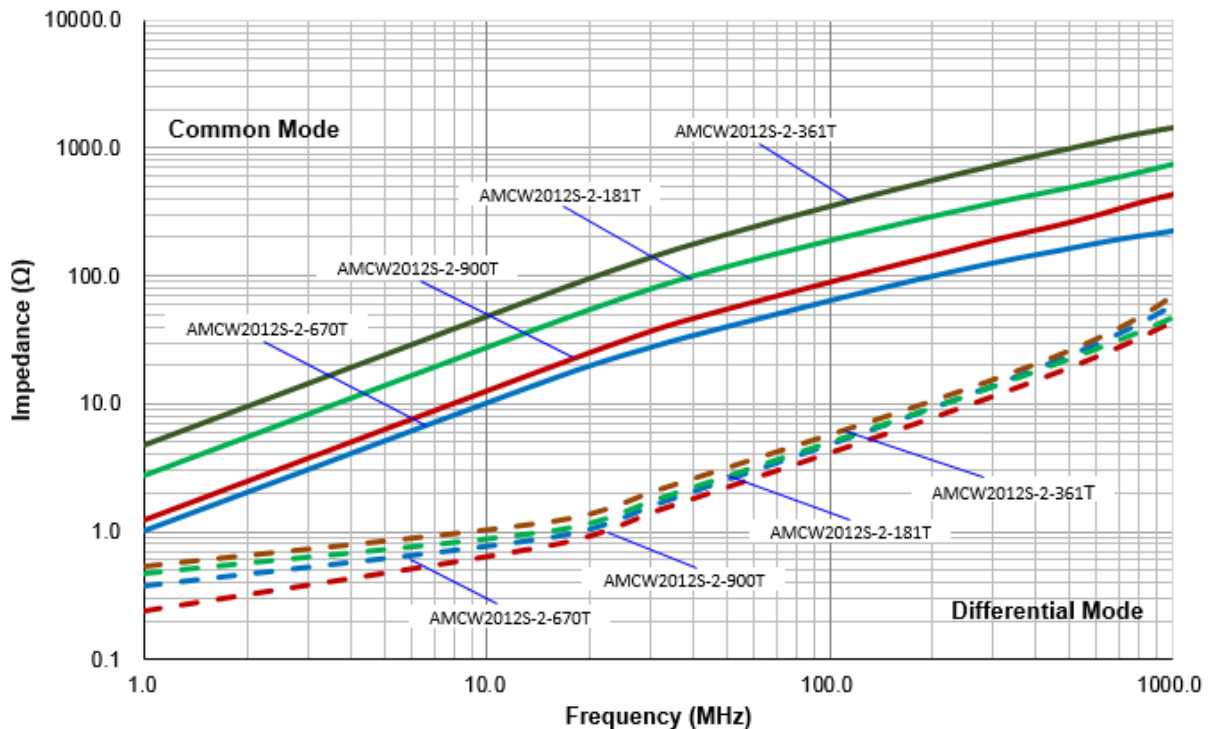
EQUIVALENT CIRCUIT



TYPICAL ELECTRICAL CHARACTERISTICS

Impedance vs. Frequency

AMCW2012S TYPE



X-ON Electronics

Largest Supplier of Electrical and Electronic Components

Click to view similar products for [Common Mode Chokes / Filters](#) category:

Click to view products by [Sunlord](#) manufacturer:

Other Similar products are found below :

[74279408](#) [PE-62911NL](#) [PE-64683](#) [RD5122-6-9M6](#) [RGCMF1210900H3T](#) [ST6118T-R](#) [FE3X025-10-7NL](#) [T8114NLT](#) [RD5122-10-6M0](#)
[TCM0806G-350-2P-T](#) [TCM0806G-650-2P-T](#) [IND-0110](#) [UAL21VR0802000](#) [UALSC023000000](#) [UALSC1020JH000](#) [UALSC1520JH000](#)
[UALSU10VR15019](#) [UALSU9VD070100](#) [36-00037](#) [5701610000](#) [UALW21HS200290](#) [UALW21HS072450](#) [UALSU9HF050500](#)
[UALSU9H0208000](#) [UAL24VK06450CH](#) [PLT10HH501100PNB](#) [PLT10HH401100PNB](#) [PLT10HH1026R0PNB](#) [PE-67531](#) [TLH10UB 113](#)
[OR5](#) [2752045447](#) [CMS3-11-R](#) [7351V](#) [7408-RC](#) [CMF16-153131](#) [744252510](#) [T8116NLT](#) [CMS2-10-R](#) [DLW44SN101SK2L](#) [FE2X10-4-2NL](#)
[744253200](#) [744253101](#) [744252220](#) [TX8111NLT](#) [UAL30VR3500470](#) [CTX01-19077-R](#) [T8003NLT](#) [CTX01-13663](#) [CTX66-19521-R](#)
[7446630047](#)