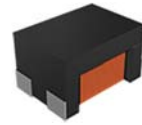


Wire Wound Chip Common Mode Choke Coil –AMCW-F Series

Operating Temp. : -40°C~+150°C



FEATURES

- Winding type, small size and low profile
- Manufactured with fully-automated processes for high reliability and consistent quality
- Excellent solderability
- AEC-Q200 verified

APPLICATIONS

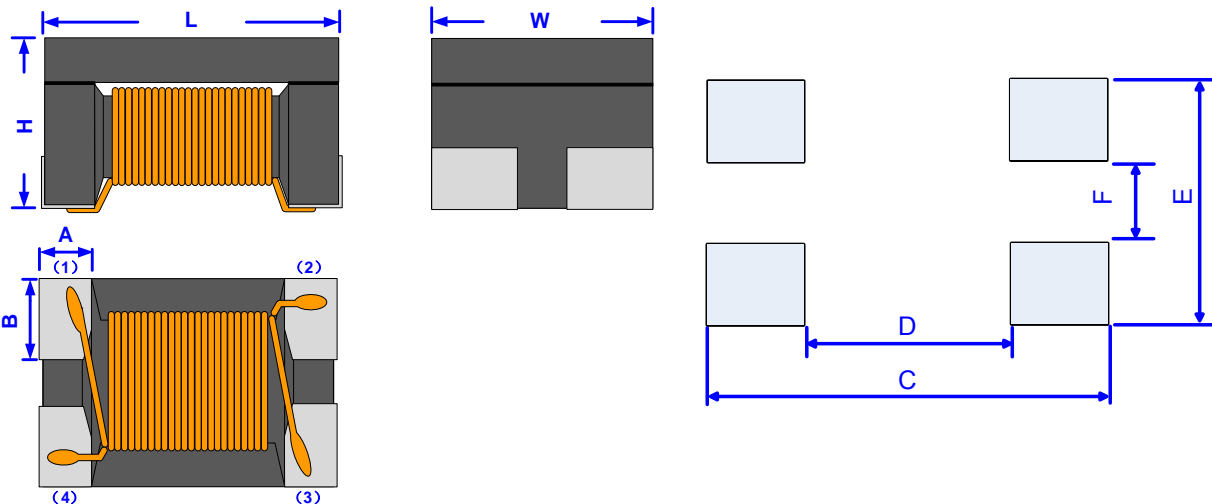
- Automotive CAN-FD system

PRODUCT IDENTIFICATION

AMCW ①	4532 ②	F ③	-2 ④	-101 ⑤	T ⑥														
<table border="1"> <tr><th colspan="2">Type</th></tr> <tr><td>AMCW</td><td>Winding Type Common Mode Choke Coil</td></tr> </table>		Type		AMCW	Winding Type Common Mode Choke Coil	<table border="1"> <tr><th colspan="2">External Dimensions (L×W) (mm)</th></tr> <tr><td>4532 [1812]</td><td>4.5×3.2</td></tr> <tr><td>3225[1210]</td><td>3.2×2.5</td></tr> </table>		External Dimensions (L×W) (mm)		4532 [1812]	4.5×3.2	3225[1210]	3.2×2.5	<table border="1"> <tr><th colspan="2">Code</th></tr> <tr><td>F</td><td>for CAN-FD</td></tr> </table>		Code		F	for CAN-FD
Type																			
AMCW	Winding Type Common Mode Choke Coil																		
External Dimensions (L×W) (mm)																			
4532 [1812]	4.5×3.2																		
3225[1210]	3.2×2.5																		
Code																			
F	for CAN-FD																		
<table border="1"> <tr><th colspan="2">Nominal Inductance</th></tr> <tr><th>Example</th><th>Nominal Value</th></tr> <tr><td>101</td><td>100μH</td></tr> </table>		Nominal Inductance		Example	Nominal Value	101	100μH	<table border="1"> <tr><th colspan="2">Number of Lines</th></tr> <tr><td colspan="2">2</td></tr> </table>		Number of Lines		2		<table border="1"> <tr><th colspan="2">Packing</th></tr> <tr><td>T</td><td>Tape & Reel</td></tr> </table>		Packing		T	Tape & Reel
Nominal Inductance																			
Example	Nominal Value																		
101	100μH																		
Number of Lines																			
2																			
Packing																			
T	Tape & Reel																		

SHAPE AND DIMENSIONS

Recommended Land Pattern



Unit: mm

Series	L	H	W	A	B	C	D	E	F
AMCW4532F	4.50±0.20	2.30±0.20	3.20±0.20	1.00	1.25	5.50	2.90	3.20	0.70
AMCW3225F	3.20±0.20	2.20±0.20	2.50±0.20	0.70	1.05	4.10	2.00	2.50	0.40

SPECIFICATIONS

AMCW4532F TYPE

Part Number	Inductance @100KHz/0.1V	DC Resistance	Rated Current	Rated Voltage	Insulation Resistance
	+50%/-30%	Max.	Max.	Max.	Min.
Units	μH	Ω	mA	Volts	M Ω
Symbol	L	DCR	I _{rms}	V _{DC}	IR
AMCW4532F-2-101T	100	2.0	200	50	10

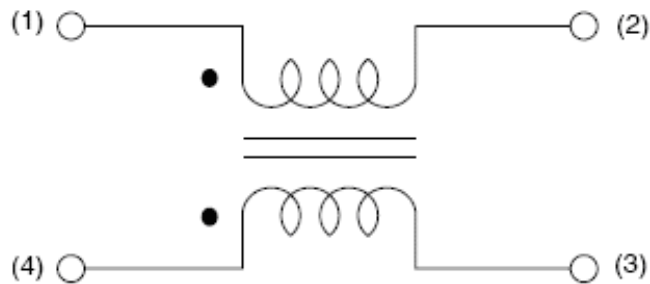
AMCW3225F TYPE

Part Number	Inductance @100KHz/0.1V	DC Resistance	Rated Current	Rated Voltage	Insulation Resistance
	+50%/-30%	Max.	Max.	Max.	Min.
Units	μH	Ω	mA	Volts	M Ω
Symbol	L	DCR	I _{rms}	V _{DC}	IR
AMCW3225F-2-101T	100	2.5	150	50	10

1 .Storage temperature range (packaging conditions): -10°C~+40°C and RH 70% (Max.)

※: Products with other electrical characteristics can be provided upon customer's request. Please contact your local sales.

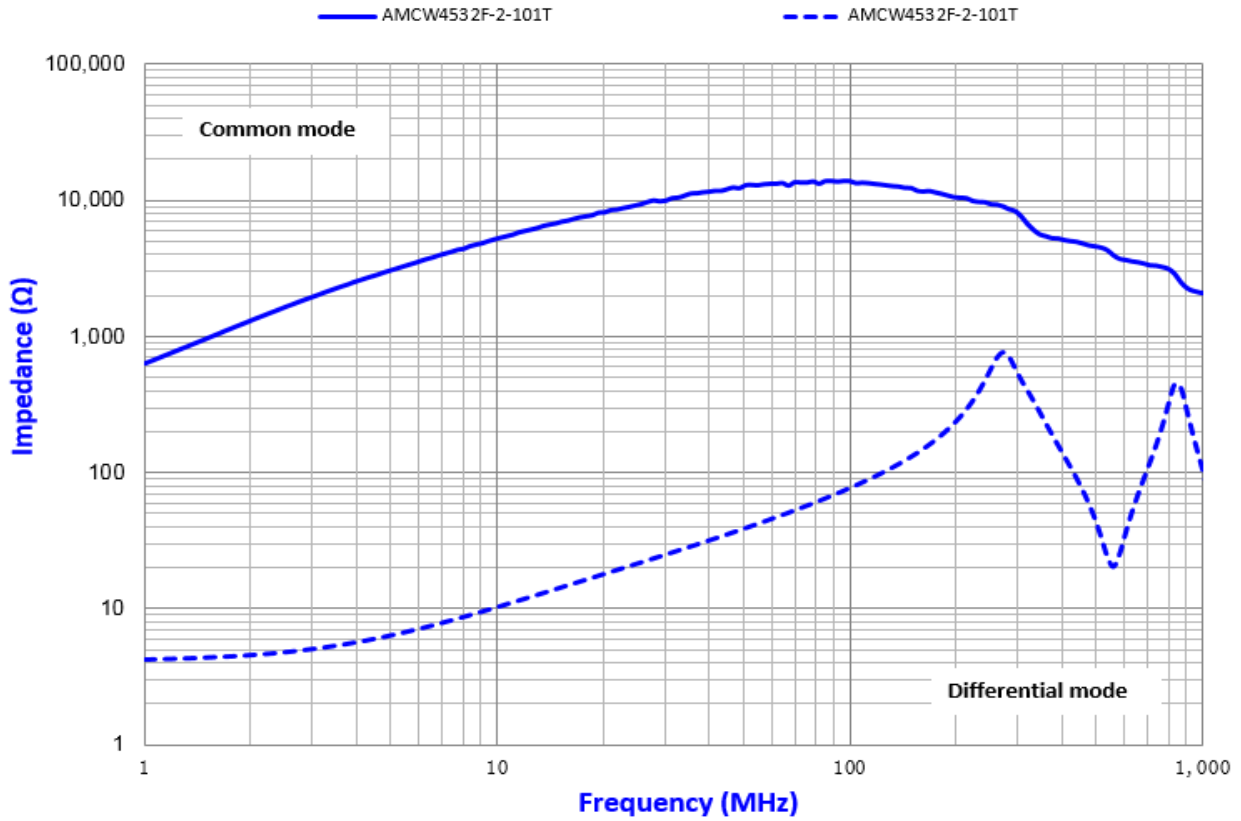
EQUIVALENT CIRCUIT



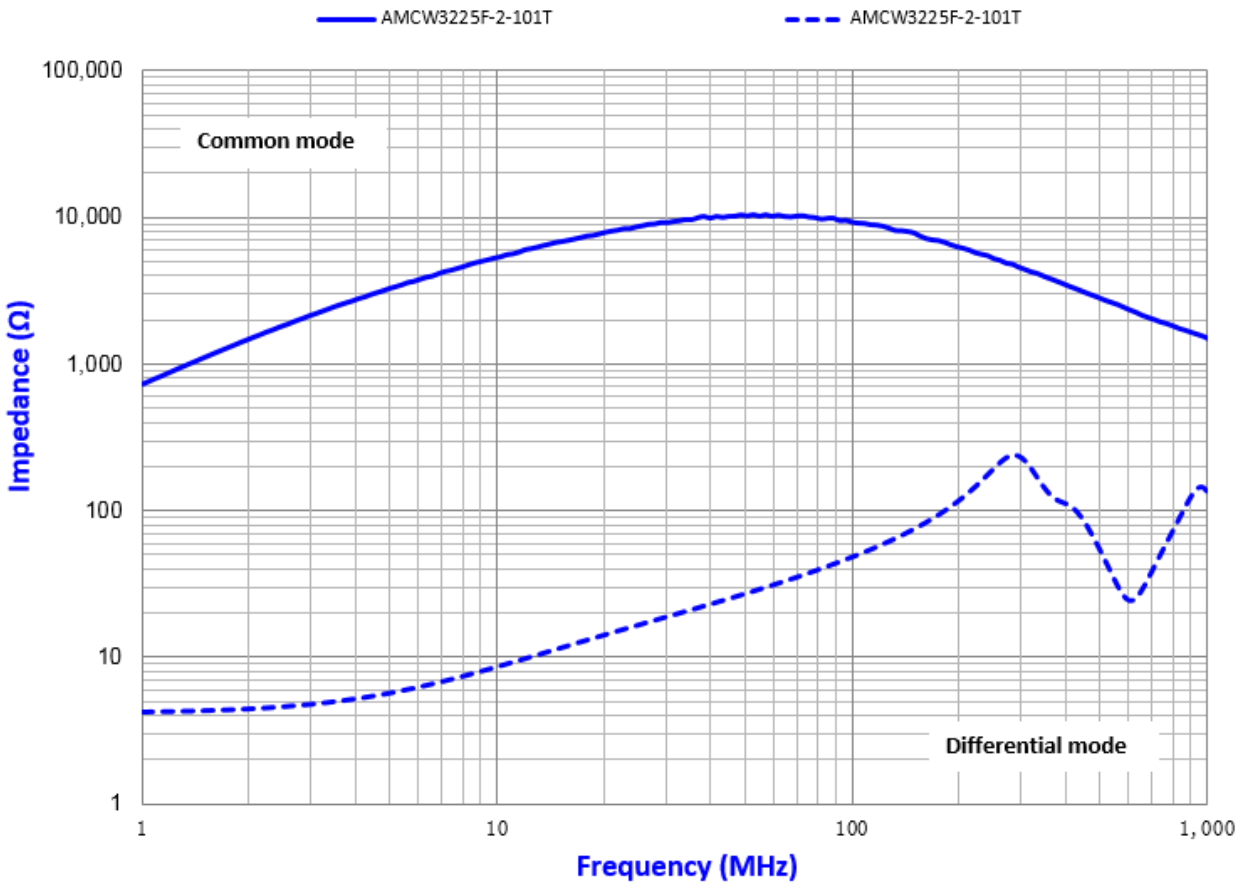
TYPICAL ELECTRICAL CHARACTERISTICS

Impedance vs. Frequency

AMCW4532F TYPE



AMCW3225F TYPE



X-ON Electronics

Largest Supplier of Electrical and Electronic Components

Click to view similar products for [Common Mode Chokes / Filters](#) category:

Click to view products by [Sunlord](#) manufacturer:

Other Similar products are found below :

[74279408](#) [PE-62911NL](#) [PE-64683](#) [RD5122-6-9M6](#) [RGCMF1210900H3T](#) [ST6118T-R](#) [FE3X025-10-7NL](#) [T8114NLT](#) [RD5122-10-6M0](#)
[TCM0806G-350-2P-T](#) [TCM0806G-650-2P-T](#) [IND-0110](#) [UAL21VR0802000](#) [UALSC023000000](#) [UALSC1020JH000](#) [UALSC1520JH000](#)
[UALSU10VR15019](#) [UALSU9VD070100](#) [36-00037](#) [5701610000](#) [UALW21HS200290](#) [UALW21HS072450](#) [UALSU9HF050500](#)
[UALSU9H0208000](#) [UAL24VK06450CH](#) [PLT10HH501100PNB](#) [PLT10HH401100PNB](#) [PLT10HH1026R0PNB](#) [PE-67531](#) [TLH10UB 113](#)
[OR5](#) [2752045447](#) [CMS3-11-R](#) [7351V](#) [7408-RC](#) [CMF16-153131](#) [744252510](#) [T8116NLT](#) [CMS2-10-R](#) [DLW44SN101SK2L](#) [FE2X10-4-2NL](#)
[744253200](#) [744253101](#) [744252220](#) [TX8111NLT](#) [UAL30VR3500470](#) [CTX01-19077-R](#) [T8003NLT](#) [CTX01-13663](#) [CTX66-19521-R](#)
[7446630047](#)