

Chip Solid MnO₂ Tantalum Capacitors – TC2 Series

Operating temp. : -55°C ~ +125°C



- FEATURES**
- ◆ Meets or exceeds EIA-535BAAC standard
 - ◆ Self-healing capability, high reliability
 - ◆ Excellent stability of capacitance during operating temperature range
 - ◆ High volumetric efficiency
 - ◆ 100% surge current test

- APPLICATIONS**
- ◆ Communication
 - ◆ Consumer electronics
 - ◆ Instruments
 - ◆ Medical electronics

PRODUCT IDENTIFICATION

1	2	3	4	5	6	7
TC	212	B	105	M	035	B

1 Type

TC	Solid Tantalum Chip Capacitor
----	-------------------------------

2 Series

211	Industrial
212	Low ESR

3 External Dimensions (L×W) (mm)

A	3.2×1.6
B	3.5×2.8
C	6.0×3.2
D/E	7.3×4.3

4 Nominal Capacitance

Example	Nominal Value
105	1.0μF
106	1.0μF

6 Rated DC Voltage

002	2.5Vdc
004	4Vdc
006	6.3Vdc
010	10Vdc
016	16Vdc
020	20Vdc
025	25Vdc
035	35Vdc
050	50Vdc

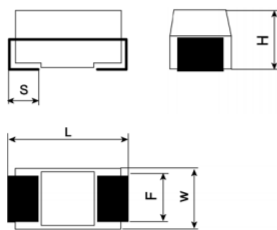
5 Capacitance Tolerance

K	±10%
M	±20%

7 Internal Code

B	Black Molded Case, Laser Marking
Y	Yellow Molded Case, Laser Marking

SHAPE AND DIMENSIONS



Unit: mm [inch]

Case	EIA	L	W	H	F	S
A	3216-18	3.20±0.20 [.126±.008]	1.60±0.20 [.063±.008]	1.60±0.20 [.063±.008]	1.20±0.10 [.040±.004]	0.80±0.30 [.031±.012]
B	3528-21	3.50±0.20 [.138±.008]	2.80±0.20 [.110±.008]	1.90±0.20 [.075±.008]	2.20±0.10 [.087±.004]	0.80±0.30 [.030±.012]
C	6032-28	6.00±0.30 [.236±.012]	3.20±0.30 [.126±.012]	2.50±0.30 [.098±.012]	2.20±0.10 [.087±.004]	1.30±0.30 [.051±.012]
D	7343-31	7.30±0.30 [.287±.012]	4.30±0.30 [.169±.012]	4.30±0.30 [.169±.012]	2.80±0.10 [.094±.004]	1.30±0.30 [.051±.012]
E	7343-43	7.30±0.30 [.287±.012]	4.30±0.30 [.169±.012]	4.00±0.30 [.161±.012]	2.40±0.10 [.094±.004]	1.30±0.30 [.051±.012]

Chip Solid MnO₂ Tantalum Capacitor
Chip Solid Polymer Tantalum Capacitor
Chip Solid MnO₂ Tantalum Capacitor
Chip Solid Polymer Tantalum Capacitor

TECHNICAL SPECIFICATION

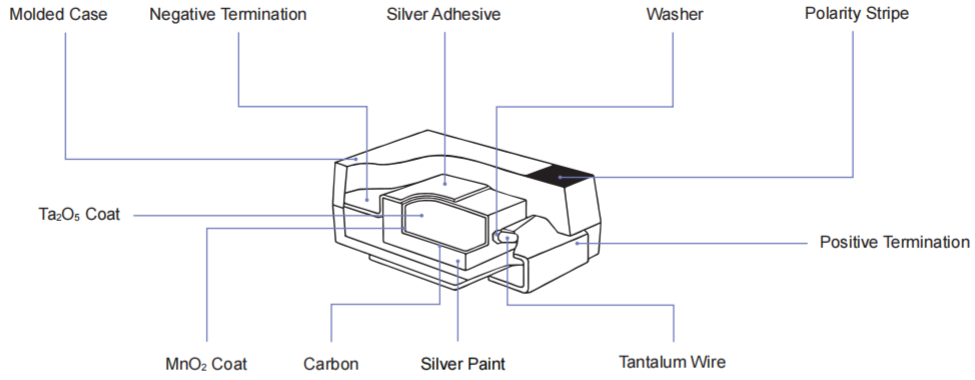
Item	SPEC										Test Condition
Operating Temp	-55°C ~+125°C										/
C _R Range	0.15μF~680μF										25°C , 120Hz
C _R Tolerance	±10% or ±20%										25°C , 120Hz
Rated Voltage (V _R)	2.5V	4V	6.3V	10V	16V	20V	25V	35V	50V	85°C	
Category Voltage (V _C)	1.6V	2.5V	4V	6.3V	10V	13V	16V	20V	32V	125°C	
Surge Voltage (V _S)	3.3V	5.2V	8V	13V	20V	26V	32V	46V	65V	85°C	
Surge Voltage (V _S)	2.2V	3.4V	5V	8V	13V	16V	20V	28V	40V	125°C	

STANDARD C-V VALUE BY CASE CODE

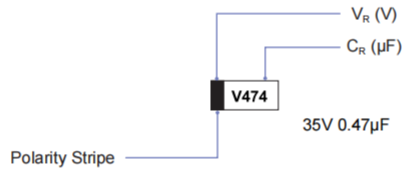
Rated Voltage (V _R)	2.5	4	6.3	10	16	20	25	35	50	
Voltage Code	e	G	J	A	C	D	E	V	T	
C _R (μF)	C Code	Case Code								
0.15	154								B	
0.22	224								B/A	
0.33	334						A	A	B/A	
0.47	474						A	B/A	C/B/A	
0.68	684					A	A	B/A	C/B/A	
1.0	105			A	A	A	A	B/A	B/A	C/B
1.5	155			A	A	A	B/A	B/A	C/B	C/B
2.2	225		A	A	A	B/A	B/A	C/B/A	C/B/A	D/C/B
3.3	335		A	A	A	B/A	B/A	C/B/A	C/B	D/C/B
4.7	475		A	A	B/A	C/B/A	C/B/A	C/B/A	D/C/B	D
6.8	685		A	B/A	B/A	C/B/A	D/C/B/A	D/C/B	D/C	D
10	106	A	B/A	B/A	C/B/A	C/B/A	D/C/B	D/C/B	E/D/C	E/D
15	156	B/A	B/A	B/A	C/B/A	C/B	D/C	D/C/B	E/D	E
22	226	A	B/A	B/A	C/B/A	D/C/B/A	D/C/B	D/C	E/D	
33	336	A	C/B/A	C/B/A	D/C/B/A	D/C/B	D/C	E/D	E	
47	476	A	C/B/A	C/B/A	D/C/B/A	D/C/B	E/D/C	E/D	E	
68	686	B/A	D/C/B	D/C/B	D/C/B	D	E/D	E		
100	107	B/A	D/C/B/A	D/C/B/A	D/C/B	D/C	E/D			
150	157	B	D/C/B	D/C/B	E/D/C	E/D	E			
220	227	B	D/C/B	E/D/C	E/D	E/D				
330	337		E/D/C/B	E/D	E/D	E				
470	477		E	E/D	E					
680	687		E							

※: The first case code is standard product and the others are expansion products.

CONSTRUCTION



MARKING



A/B/C/D/E Case Marking

Rated Voltage Code

Rated Voltage (V _R)	2.5	4	6.3	10	16	20	25	35	50
Code	e	G	J	A	C	D	E	V	T

Capacitance Code

Capacitance (µF)	0.1	0.15	0.22	0.33	0.47	0.68	1.0	1.5	2.2	3.3	4.7	6.8
Code (A/B/C/D/E Case)	104	154	224	334	474	684	105	155	225	335	475	685
Capacitance (µF)	10	15	22	33	47	68	100	150	220	330	470	680
Code (A/B/C/D/E Case)	106	156	226	336	476	686	107	157	227	337	477	687

SPECIFICATIONS

TC211 TYPE

Rated Cap (uF)	Case	Part Number	DCL(μA) +25°C Max.	DF(%) +25°C 120Hz Max.	ESR(Ω) +25°C 100kHz Max.
2.5V, +85°C (1.6V @ +125°C)					
10	A	TC211A106 002 □	0.5	6.0	5.0
15	A	TC211A156 002 □	0.5	6.0	6.0
15	B	TC211B156 002 □	0.5	6.0	4.0
22	A	TC211A226 002 □	0.6	6.0	4.0
33	A	TC211A336 002 □	0.8	6.0	4.0
47	A	TC211A476 002 □	1.2	10.0	4.0
68	A	TC211A686 002 □	1.7	10.0	3.0
68	B	TC211B686 002 □	1.7	6.0	2.0
100	A	TC211A107 002 □	2.5	20.0	2.5
100	B	TC211B107 002 □	2.5	8.0	1.5
150	B	TC211B157 002 □	3.8	10.0	2.0
220	B	TC211B227 002 □	5.5	18.0	2.0
4V, +85°C (2.5V @ +125°C)					
2.2	A	TC211A225 004 □	0.5	6.0	8.0
3.3	A	TC211A335 004 □	0.5	6.0	8.0
4.7	A	TC211A475 004 □	0.5	6.0	8.0
6.8	A	TC211A685 004 □	0.5	6.0	6.0
10	A	TC211A106 004 □	0.5	6.0	6.0
10	B	TC211B106 004 □	0.5	6.0	3.5
15	A	TC211A156 004 □	0.6	6.0	4.0
15	B	TC211B156 004 □	0.6	6.0	3.5
22	A	TC211A226 004 □	0.9	6.0	4.0
22	B	TC211B226 004 □	0.9	6.0	3.5
33	A	TC211A336 004 □	1.3	6.0	4.0
33	B	TC211B336 004 □	1.3	6.0	3.5
33	C	TC211C336 004 □	1.3	6.0	1.8
47	A	TC211A476 004 □	1.9	6.0	3.0
47	B	TC211B476 004 □	1.9	6.0	3.0
47	C	TC211C476 004 □	1.9	6.0	1.8
68	B	TC211B686 004 □	2.7	6.0	3.5
68	C	TC211C686 004 □	2.7	6.0	1.6
68	D	TC211D686 004 □	2.7	6.0	0.8
100	A	TC211A107 004 □	4.0	18.0	5.0
100	B	TC211B107 004 □	4.0	8.0	2.0
100	C	TC211C107 004 □	4.0	8.0	1.3
100	D	TC211D107 004 □	4.0	8.0	0.8
150	B	TC211B157 004 □	6.0	15.0	2.0
150	C	TC211C157 004 □	6.0	8.0	1.2
150	D	TC211D157 004 □	6.0	8.0	0.8
220	B	TC211B227 004 □	8.8	18.0	0.5
220	C	TC211C227 004 □	8.8	8.0	1.0
220	D	TC211D227 004 □	8.8	8.0	0.8
330	B	TC211B337 004 □	13.2	18.0	1.2
330	C	TC211C337 004 □	13.2	8.0	1.2
330	D	TC211D337 004 □	13.2	8.0	0.7
330	E	TC211E337 004 □	13.2	8.0	0.8
470	E	TC211E477 004 □	18.8	8.0	0.8
680	E	TC211E687 004 □	27.2	8.0	0.5
6.3V, +85°C (4.0V @ +125°C)					
1	A	TC211A105 006 □	0.5	6.0	14.0

Rated Cap (uF)	Case	Part Number	DCL(μA) +25°C Max.	DF(%) +25°C 120Hz Max.	ESR(Ω) +25°C 100kHz Max.
1.5	A	TC211A155 006 □	0.5	6.0	8.0
2.2	A	TC211A225 006 □	0.5	6.0	8.0
3.3	A	TC211A335 006 □	0.5	6.0	8.0
4.7	A	TC211A475 006 □	0.5	6.0	6.0
6.8	A	TC211A685 006 □	0.5	6.0	6.0
6.8	B	TC211B685 006 □	0.5	6.0	3.5
10	A	TC211A106 006 □	0.6	6.0	4.0
10	B	TC211B106 006 □	0.6	6.0	3.5
15	A	TC211A156 006 □	0.9	6.0	4.0
15	B	TC211B156 006 □	0.9	6.0	3.5
22	A	TC211A226 006 □	1.3	6.0	4.0
22	B	TC211B226 006 □	1.3	6.0	3.5
33	A	TC211A336 006 □	2.1	8.0	4.5
33	B	TC211B336 006 □	2.1	6.0	3.0
33	C	TC211C336 006 □	2.1	6.0	1.8
47	A	TC211A476 006 □	3.0	8.0	3.5
47	B	TC211B476 006 □	3.0	6.0	3.0
47	C	TC211C476 006 □	3.0	6.0	1.6
68	B	TC211B686 006 □	4.3	10.0	1.2
68	C	TC211C686 006 □	4.3	6.0	1.2
68	D	TC211D686 006 □	4.3	6.0	0.8
100	A	TC211A107 006 □	6.3	20.0	4.0
100	B	TC211B107 006 □	6.3	10.0	3.0
100	C	TC211C107 006 □	6.3	8.0	1.2
100	D	TC211D107 006 □	6.3	8.0	0.8
150	B	TC211B157 006 □	9.5	15.0	1.0
150	C	TC211C157 006 □	9.5	8.0	1.2
150	D	TC211D157 006 □	9.5	8.0	0.8
220	B	TC211B227 006 □	39.9	18.0	1.0
220	C	TC211C227 006 □	13.9	8.0	1.2
220	D	TC211D227 006 □	13.9	8.0	0.7
220	E	TC211E227 006 □	13.9	8.0	0.5
330	D	TC211D337 006 □	20.8	8.0	0.5
330	E	TC211E337 006 □	20.8	8.0	0.5
470	D	TC211D477 006 □	29.6	12.0	0.4
470	E	TC211E477 006 □	29.6	10.0	0.5
10V, +85°C (6.3V @ +125°C)					
1.0	A	TC211A105 010 □	0.5	4.0	13.0
1.5	A	TC211A155 010 □	0.5	6.0	8.0
2.2	A	TC211A225 010 □	0.5	6.0	8.0
3.3	A	TC211A335 010 □	0.5	6.0	6.0
4.7	A	TC211A475 010 □	0.5	6.0	6.0
4.7	B	TC211B475 010 □	0.5	6.0	3.5
6.8	A	TC211A685 010 □	0.7	6.0	6.0
6.8	B	TC211B685 010 □	0.7	6.0	3.5
10	A	TC211A106 010 □	1.0	6.0	4.0
10	B	TC211B106 010 □	1.0	6.0	3.5
10	C	TC211C106 010 □	1.0	6.0	1.8
15	A	TC211A156 010 □	1.5	6.0	6.0
15	B	TC211B156 010 □	1.5	6.0	3.5
15	C	TC211C156 010 □	1.5	6.0	1.8

SPECIFICATIONS

TC211 TYPE

Rated Cap (uF)	Case	Part Number	DCL(μA) +25°C Max.	DF(%) +25°C 120Hz Max.	ESR(Ω) +25°C 100kHz Max.
22	A	TC211A226 Ⓞ 010 □	2.2	8.0	4.0
22	B	TC211B226 Ⓞ 010 □	2.2	6.0	3.3
22	C	TC211C226 Ⓞ 010 □	2.2	6.0	1.8
33	A	TC211A336 Ⓞ 010 □	3.3	15.0	6.0
33	B	TC211B336 Ⓞ 010 □	3.3	6.0	3.5
33	C	TC211C336 Ⓞ 010 □	3.3	6.0	1.6
33	D	TC211D336 Ⓞ 010 □	3.3	6.0	0.8
47	A	TC211A476 Ⓞ 010 □	4.7	15.0	4.0
47	B	TC211B476 Ⓞ 010 □	4.7	6.0	1.0
47	C	TC211C476 Ⓞ 010 □	4.7	6.0	1.2
47	D	TC211D476 Ⓞ 010 □	4.7	6.0	0.8
68	B	TC211B686 Ⓞ 010 □	6.8	10.0	3.0
68	C	TC211C686 Ⓞ 010 □	6.8	6.0	1.2
68	D	TC211D686 Ⓞ 010 □	6.8	6.0	0.8
100	B	TC211B107 Ⓞ 010 □	10.0	15.0	1.5
100	C	TC211C107 Ⓞ 010 □	10.0	8.0	1.2
100	D	TC211D107 Ⓞ 010 □	10.0	8.0	0.7
150	C	TC211C157 Ⓞ 010 □	15.0	10.0	0.9
150	D	TC211D157 Ⓞ 010 □	15.0	8.0	0.7
150	E	TC211E157 Ⓞ 010 □	15.0	8.0	0.5
220	D	TC211D227 Ⓞ 010 □	22.0	8.0	0.5
220	E	TC211E227 Ⓞ 010 □	22.0	8.0	0.5
330	D	TC211D337 Ⓞ 010 □	33.0	10.0	0.5
330	E	TC211E337 Ⓞ 010 □	33.0	10.0	0.5
470	E	TC211E477 Ⓞ 010 □	47.0	10.0	0.5
16V, +85°C (10V @ +125°C)					
1	A	TC211A105 Ⓞ 016 □	0.5	4.0	10.0
1.5	A	TC211A155 Ⓞ 016 □	0.5	6.0	8.0
2.2	A	TC211A225 Ⓞ 016 □	0.5	6.0	6.0
2.2	B	TC211B225 Ⓞ 016 □	0.5	6.0	4.0
3.3	A	TC211A335 Ⓞ 016 □	0.52	6.0	6.0
3.3	B	TC211B335 Ⓞ 016 □	0.5	6.0	3.5
4.7	A	TC211A475 Ⓞ 016 □	0.8	6.0	6.0
4.7	B	TC211B475 Ⓞ 016 □	0.8	6.0	3.5
4.7	C	TC211C475 Ⓞ 016 □	0.8	6.0	2.4
6.8	A	TC211A685 Ⓞ 016 □	1.1	6.0	7.0
6.8	B	TC211B685 Ⓞ 016 □	1.1	6.0	3.5
6.8	C	TC211C685 Ⓞ 016 □	1.1	6.0	2.0
10	A	TC211A106 Ⓞ 016 □	1.6	8.0	7.0
10	B	TC211B106 Ⓞ 016 □	1.6	6.0	2.8
10	C	TC211C106 Ⓞ 016 □	1.6	6.0	1.8
15	B	TC211B156 Ⓞ 016 □	2.4	6.0	3.0
15	C	TC211C156 Ⓞ 016 □	2.4	6.0	1.8
22	A	TC211A226 Ⓞ 016 □	3.5	15.0	4.0
22	B	TC211B226 Ⓞ 016 □	3.5	8.0	2.2
22	C	TC211C226 Ⓞ 016 □	3.5	6.0	1.6
22	D	TC211D226 Ⓞ 016 □	3.5	6.0	0.8
33	B	TC211B336 Ⓞ 016 □	5.3	8.0	2.0
33	C	TC211C336 Ⓞ 016 □	5.3	6.0	1.2
33	D	TC211D336 Ⓞ 016 □	5.3	6.0	0.8
47	B	TC211B476 Ⓞ 016 □	7.5	18.0	1.0

Rated Cap (uF)	Case	Part Number	DCL(μA) +25°C Max.	DF(%) +25°C 120Hz Max.	ESR(Ω) +25°C 100kHz Max.
47	C	TC211C476 Ⓞ 016 □	7.5	6.0	1.2
47	D	TC211D476 Ⓞ 016 □	7.5	6.0	0.8
68	D	TC211D686 Ⓞ 016 □	10.8	6.0	0.8
100	C	TC211C107 Ⓞ 016 □	16.0	10.0	1.0
100	D	TC211D107 Ⓞ 016 □	16.0	8.0	0.7
150	D	TC211D157 Ⓞ 016 □	24.0	12.0	0.7
150	E	TC211E157 Ⓞ 016 □	24.0	8.0	0.5
220	D	TC211D227 Ⓞ 016 □	35.2	15.0	0.9
220	E	TC211E227 Ⓞ 016 □	35.2	10.0	0.5
330	E	TC211E337 Ⓞ 016 □	52.8	10.0	0.5
20V, +85°C (13V @ +125°C)					
0.68	A	TC211A684 Ⓞ 020 □	0.5	4.0	12.0
1	A	TC211A105 Ⓞ 020 □	0.5	4.0	10.0
1.5	A	TC211A155 Ⓞ 020 □	0.5	6.0	8.0
1.5	B	TC211B155 Ⓞ 020 □	0.5	6.0	5.0
2.2	A	TC211A225 Ⓞ 020 □	0.5	6.0	7.0
2.2	B	TC211B225 Ⓞ 020 □	0.5	6.0	3.5
3.3	A	TC211A335 Ⓞ 020 □	0.7	6.0	7.0
3.3	B	TC211B335 Ⓞ 020 □	0.7	6.0	3.5
4.7	A	TC211A475 Ⓞ 020 □	0.9	6.0	4.0
4.7	B	TC211B475 Ⓞ 020 □	0.9	6.0	3.5
4.7	C	TC211C475 Ⓞ 020 □	0.9	6.0	2.4
6.8	A	TC211A685 Ⓞ 020 □	1.4	8.0	6.0
6.8	B	TC211B685 Ⓞ 020 □	1.4	6.0	3.5
6.8	C	TC211C685 Ⓞ 020 □	1.4	6.0	2.0
6.8	D	TC211D685 Ⓞ 020 □	1.4	6.0	1.9
10	B	TC211B106 Ⓞ 020 □	2.0	6.0	3.0
10	C	TC211C106 Ⓞ 020 □	2.0	6.0	1.8
10	D	TC211D106 Ⓞ 020 □	2.0	6.0	1.0
15	C	TC211C156 Ⓞ 020 □	3.0	6.0	1.7
15	D	TC211D156 Ⓞ 020 □	3.0	6.0	1.0
22	B	TC211B226 Ⓞ 020 □	4.4	8.0	4.0
22	C	TC211C226 Ⓞ 020 □	4.4	6.0	1.2
22	D	TC211D226 Ⓞ 020 □	4.4	6.0	0.8
33	C	TC211C336 Ⓞ 020 □	6.6	6.0	1.2
33	D	TC211D336 Ⓞ 020 □	6.6	6.0	0.8
47	C	TC211C476 Ⓞ 020 □	9.4	10.0	1.0
47	D	TC211D476 Ⓞ 020 □	9.4	6.0	0.8
47	E	TC211E476 Ⓞ 020 □	9.4	6.0	0.8
68	D	TC211D686 Ⓞ 020 □	13.6	6.0	0.8
68	E	TC211E686 Ⓞ 020 □	13.6	6.0	0.8
100	D	TC211D107 Ⓞ 020 □	20.0	8.0	0.6
100	E	TC211E107 Ⓞ 020 □	20.0	8.0	0.5
150	E	TC211E157 Ⓞ 020 □	30.0	8.0	0.5
25V, +85°C (16V @ +125°C)					
0.33	A	TC211A334 Ⓞ 025 □	0.5	4.0	15.0
0.47	A	TC211A474 Ⓞ 025 □	0.5	4.0	14.0
0.68	A	TC211A684 Ⓞ 025 □	0.5	4.0	10.0
1	A	TC211A105 Ⓞ 025 □	0.5	4.0	8.0
1	B	TC211B105 Ⓞ 025 □	0.5	4.0	5.0
1.5	A	TC211A155 Ⓞ 025 □	0.5	6.0	10.0

Chip Solid MnO2 Tantalum Capacitor
Chip Solid Polymer Tantalum Capacitor
Chip Solid MnO2 Tantalum Capacitor
Chip Solid Polymer Tantalum Capacitor

SPECIFICATIONS

TC211 TYPE

Rated Cap (uF)	Case	Part Number	DCL(μA) +25°C Max.	DF(%) +25°C 120Hz Max.	ESR(Ω) +25°C 100kHz Max.
1.5	B	TC211B155 Ⓞ 025 □	0.5	6.0	5.0
2.2	A	TC211A225 Ⓞ 025 □	0.6	6.0	6.0
2.2	B	TC211B225 Ⓞ 025 □	0.6	6.0	4.5
2.2	C	TC211C225 Ⓞ 025 □	0.6	6.0	3.5
3.3	A	TC211A335 Ⓞ 025 □	0.8	6.0	7.0
3.3	B	TC211B335 Ⓞ 025 □	0.8	6.0	3.5
3.3	C	TC211C335 Ⓞ 025 □	0.8	6.0	2.5
4.7	A	TC211A475 Ⓞ 025 □	1.2	8.0	6.0
4.7	B	TC211B475 Ⓞ 025 □	1.2	6.0	2.0
4.7	C	TC211C475 Ⓞ 025 □	1.2	6.0	2.4
6.8	B	TC211B685 Ⓞ 025 □	1.7	6.0	3.0
6.8	C	TC211C685 Ⓞ 025 □	1.7	6.0	1.9
6.8	D	TC211D685 Ⓞ 025 □	1.7	6.0	1.2
10	B	TC211B106 Ⓞ 025 □	2.5	6.0	3.0
10	C	TC211C106 Ⓞ 025 □	2.5	6.0	1.5
10	D	TC211D106 Ⓞ 025 □	2.5	6.0	1.0
15	B	TC211B156 Ⓞ 025 □	3.8	8.0	4.0
15	C	TC211C156 Ⓞ 025 □	3.8	6.0	1.5
15	D	TC211D156 Ⓞ 025 □	3.8	6.0	1.0
22	C	TC211C226 Ⓞ 025 □	5.5	6.0	1.4
22	D	TC211D226 Ⓞ 025 □	5.5	6.0	0.8
33	D	TC211D336 Ⓞ 025 □	8.3	6.0	0.8
33	E	TC211E336 Ⓞ 025 □	8.3	6.0	0.7
47	D	TC211D476 Ⓞ 025 □	11.7	6.0	0.8
47	E	TC211E476 Ⓞ 025 □	11.7	6.0	0.7
68	E	TC211E686 Ⓞ 025 □	17.0	6.0	0.7
35V, +85°C (20V @ +125°C)					
0.33	A	TC211A334 Ⓞ 035 □	0.5	4.0	15.0
0.47	A	TC211A474 Ⓞ 035 □	0.5	4.0	14.0
0.47	B	TC211B474 Ⓞ 035 □	0.5	4.0	8.0
0.68	A	TC211A684 Ⓞ 035 □	0.5	4.0	10.0
0.68	B	TC211B684 Ⓞ 035 □	0.5	4.0	6.5
1	A	TC211A105 Ⓞ 035 □	0.5	4.0	10.0
1	B	TC211B105 Ⓞ 035 □	0.5	4.0	5.0
1.5	B	TC211B155 Ⓞ 035 □	0.5	6.0	5.0
1.5	C	TC211C155 Ⓞ 035 □	0.5	6.0	4.5
2.2	A	TC211A225 Ⓞ 035 □	0.8	6.0	6.0
2.2	B	TC211B225 Ⓞ 035 □	0.8	6.0	4.0
2.2	C	TC211C225 Ⓞ 035 □	0.8	6.0	3.5
3.3	B	TC211B335 Ⓞ 035 □	1.2	6.0	3.5
3.3	C	TC211C335 Ⓞ 035 □	1.2	6.0	2.5

Rated Cap (uF)	Case	Part Number	DCL(μA) +25°C Max.	DF(%) +25°C 120Hz Max.	ESR(Ω) +25°C 100kHz Max.
4.7	B	TC211B475 Ⓞ 035 □	1.6	6.0	3.0
4.7	C	TC211C475 Ⓞ 035 □	1.6	6.0	2.5
4.7	D	TC211D475 Ⓞ 035 □	1.6	6.0	1.5
6.8	C	TC211C685 Ⓞ 035 □	2.4	6.0	2.0
6.8	D	TC211D685 Ⓞ 035 □	2.4	6.0	1.5
10	C	TC211C106 Ⓞ 035 □	3.5	6.0	2.0
10	D	TC211D106 Ⓞ 035 □	3.5	6.0	1.0
10	E	TC211E106 Ⓞ 035 □	3.5	6.0	1.0
15	D	TC211D156 Ⓞ 035 □	5.3	6.0	1.0
15	E	TC211E156 Ⓞ 035 □	5.3	6.0	0.9
22	D	TC211D226 Ⓞ 035 □	7.7	6.0	0.8
22	E	TC211E226 Ⓞ 035 □	7.7	6.0	0.7
33	E	TC211E336 Ⓞ 035 □	11.0	6.0	0.6
47	E	TC211E476 Ⓞ 035 □	16.5	8.0	0.6
50V, +85°C (32V @ +125°C)					
0.15	B	TC211B154 Ⓞ 050 □	0.5	4.0	16.0
0.22	A	TC211A224 Ⓞ 050 □	0.5	4.0	18.0
0.22	B	TC211B224 Ⓞ 050 □	0.5	4.0	14.0
0.33	A	TC211A334 Ⓞ 050 □	0.5	4.0	15.0
0.33	B	TC211B334 Ⓞ 050 □	0.5	4.0	10.0
0.47	A	TC211A474 Ⓞ 050 □	0.5	4.0	12.0
0.47	B	TC211B474 Ⓞ 050 □	0.5	4.0	9.0
0.47	C	TC211C474 Ⓞ 050 □	0.5	4.0	8.0
0.68	A	TC211A684 Ⓞ 050 □	0.5	4.0	10.0
0.68	B	TC211B684 Ⓞ 050 □	0.5	4.0	8.0
0.68	C	TC211C684 Ⓞ 050 □	0.5	4.0	7.0
1	B	TC211B105 Ⓞ 050 □	0.5	6.0	6.0
1	C	TC211C105 Ⓞ 050 □	0.5	4.0	5.5
1.5	B	TC211B155 Ⓞ 050 □	0.8	6.0	4.5
1.5	C	TC211C155 Ⓞ 050 □	0.8	6.0	3.5
2.2	B	TC211B225 Ⓞ 050 □	1.1	6.0	2.0
2.2	C	TC211C225 Ⓞ 050 □	1.1	6.0	3.5
2.2	D	TC211D225 Ⓞ 050 □	1.1	6.0	2.5
3.3	B	TC211B335 Ⓞ 050 □	1.7	6.0	5.0
3.3	C	TC211C335 Ⓞ 050 □	1.7	6.0	3.0
3.3	D	TC211D335 Ⓞ 050 □	1.7	6.0	2.0
4.7	D	TC211D475 Ⓞ 050 □	2.4	6.0	1.5
6.8	D	TC211D685 Ⓞ 050 □	3.4	6.0	1.2
10	D	TC211D106 Ⓞ 050 □	5.0	6.0	1.0
10	E	TC211E106 Ⓞ 050 □	5.0	6.0	0.7
15	E	TC211E156 Ⓞ 050 □	7.5	6.0	0.7

SPECIFICATIONS

TC212 TYPE

Rated Cap (uF)	Case	Part Number	DCL(μA) +25°C Max.	DF(%) +25°C 120Hz Max.	ESR(Ω) +25°C 100kHz Max.
2.5V, +85°C (1.6V @ +125°C)					
10	A	TC212A106	0.5	6.0	4.0
15	A	TC212A156	0.5	6.0	4.0
15	B	TC212B156	0.5	6.0	3.0
22	A	TC212A226	0.6	6.0	3.0
33	A	TC212A336	0.8	6.0	3.0
47	A	TC212A476	1.2	10.0	3.0
68	A	TC212A686	1.7	10.0	2.5
68	B	TC212B686	1.7	6.0	1.8
100	A	TC212A107	2.5	20.0	2.0
100	B	TC212B107	2.5	8.0	1.0
150	B	TC212B157	3.8	10.0	1.5
220	B	TC212B227	5.5	18.0	1.5
4V, +85°C (2.5V @ +125°C)					
2.2	A	TC212A225	0.5	6.0	6.0
3.3	A	TC212A335	0.4	5.0	6.0
4.7	A	TC212A475	0.5	6.0	5.0
6.8	A	TC212A685	0.5	6.0	4.0
10	A	TC212A106	0.5	6.0	3.0
10	B	TC212B106	0.5	6.0	1.5
15	A	TC212A156	0.6	6.0	1.5
15	B	TC212B156	0.6	6.0	1.2
22	A	TC212A226	0.9	6.0	1.5
22	B	TC212B226	0.9	6.0	0.6
33	A	TC212A336	1.3	6.0	2.5
33	B	TC212B336	1.3	6.0	0.5
33	C	TC212C336	1.3	6.0	0.8
47	A	TC212A476	1.9	6.0	2.0
47	B	TC212B476	1.9	6.0	0.8
47	C	TC212C476	1.9	6.0	1.0
68	B	TC212B686	2.7	6.0	2.5
68	C	TC212C686	2.7	6.0	0.5
68	D	TC212D686	2.7	6.0	0.5
100	A	TC212A107	4.0	18.0	3.0
100	B	TC212B107	4.0	8.0	1.0
100	C	TC212C107	4.0	8.0	0.35
100	D	TC212D107	4.0	8.0	0.2
150	B	TC212B157	6.0	15.0	1.0
150	C	TC212C157	6.0	8.0	0.3
150	D	TC212D157	6.0	8.0	0.2
220	B	TC212B227	8.8	18.0	0.4
220	C	TC212C227	8.8	8.0	0.5
220	D	TC212D227	8.8	8.0	0.3
330	B	TC212B337	13.2	18.0	0.7
330	C	TC212C337	13.2	8.0	0.8
330	D	TC212D337	13.2	8.0	0.2
330	E	TC212E337	13.2	8.0	0.2
470	E	TC212E477	18.8	8.0	0.2
680	E	TC212E687	27.2	8.0	0.2
6.3V, +85°C (4.0V @ +125°C)					
1	A	TC212A105	0.5	6.0	10.0

Rated Cap (uF)	Case	Part Number	DCL(μA) +25°C Max.	DF(%) +25°C 120Hz Max.	ESR(Ω) +25°C 100kHz Max.
1.5	A	TC212A155	0.5	6.0	6.0
2.2	A	TC212A225	0.5	6.0	6.0
3.3	A	TC212A335	0.5	6.0	6.0
4.7	A	TC212A475	0.5	6.0	4.0
6.8	A	TC212A685	0.5	6.0	3.5
6.8	B	TC212B685	0.5	6.0	3.0
10	A	TC212A106	0.6	6.0	2.0
10	B	TC212B106	0.6	6.0	1.0
15	A	TC212A156	0.9	6.0	2.0
15	B	TC212B156	0.9	6.0	0.7
22	A	TC212A226	1.4	6.0	2.5
22	B	TC212B226	1.4	6.0	0.8
33	A	TC212A336	2.1	8.0	1.5
33	B	TC212B336	2.1	6.0	0.8
33	C	TC212C336	2.1	6.0	0.3
47	A	TC212A476	2.9	8.0	2.5
47	B	TC212B476	2.9	6.0	0.5
47	C	TC212C476	2.9	6.0	0.3
68	B	TC212B686	4.3	10.0	0.65
68	C	TC212C686	4.3	6.0	0.3
68	D	TC212D686	4.3	6.0	0.2
100	A	TC212A107	6.3	20.0	2.0
100	B	TC212B107	6.3	10.0	1.5
100	C	TC212C107	6.3	8.0	0.3
100	D	TC212D107	6.3	8.0	0.2
150	B	TC212B157	9.5	15.0	0.6
150	C	TC212C157	9.5	8.0	0.3
150	D	TC212D157	9.5	8.0	0.2
220	B	TC212B227	39.9	18.0	0.7
220	C	TC212C227	13.9	8.0	0.3
220	D	TC212D227	13.9	8.0	0.15
220	E	TC212E227	13.9	8.0	0.15
330	D	TC212D337	20.8	8.0	0.15
330	E	TC212E337	20.8	8.0	0.15
470	D	TC212D477	29.6	12.0	0.15
470	E	TC212E477	29.6	10.0	0.12
10V, +85°C (6.3V @ +125°C)					
1	A	TC212A105	0.5	4.0	8.0
1.5	A	TC212A155	0.5	6.0	6.0
2.2	A	TC212A225	0.5	6.0	6.0
3.3	A	TC212A335	0.5	6.0	4.0
4.7	A	TC212A475	0.5	6.0	3.0
4.7	B	TC212B475	0.5	6.0	1.5
6.8	A	TC212A685	0.7	6.0	3.0
6.8	B	TC212B685	0.7	6.0	1.2
10	A	TC212A106	1.0	6.0	1.8
10	B	TC212B106	1.0	6.0	0.8
10	C	TC212C106	1.0	6.0	0.6
15	A	TC212A156	1.5	6.0	4.0
15	B	TC212B156	1.5	6.0	0.7
15	C	TC212C156	1.5	6.0	0.5

Chip Solid MnO2
Tantalum Capacitor
Chip Solid Polymer
Tantalum Capacitor
Chip Solid MnO2
Tantalum Capacitor
Chip Solid Polymer
Tantalum Capacitor

SPECIFICATIONS

TC212 TYPE

Rated Cap (uF)	Case	Part Number	DCL(μA) +25°C Max.	DF(%) +25°C 120Hz Max.	ESR(Ω) +25°C 100kHz Max.
22	A	TC212A226 Ⓞ 010 □	2.2	8.0	2.5
22	B	TC212B226 Ⓞ 010 □	2.2	6.0	1.0
22	C	TC212C226 Ⓞ 010 □	2.2	6.0	0.4
33	A	TC212A336 Ⓞ 010 □	3.3	15.0	4.0
33	B	TC212B336 Ⓞ 010 □	3.3	6.0	1.0
33	C	TC212C336 Ⓞ 010 □	3.3	6.0	0.4
33	D	TC212D336 Ⓞ 010 □	3.3	6.0	0.25
47	A	TC212A476 Ⓞ 010 □	4.7	15.0	1.5
47	B	TC212B476 Ⓞ 010 □	4.7	6.0	0.65
47	C	TC212C476 Ⓞ 010 □	4.7	6.0	0.3
47	D	TC212D476 Ⓞ 010 □	4.7	6.0	0.22
68	B	TC212B686 Ⓞ 010 □	6.8	10.0	1.5
68	C	TC212C686 Ⓞ 010 □	6.8	6.0	0.3
68	D	TC212D686 Ⓞ 010 □	6.8	6.0	0.2
100	B	TC212B107 Ⓞ 010 □	10.0	15.0	1.0
100	C	TC212C107 Ⓞ 010 □	10.0	8.0	0.3
100	D	TC212D107 Ⓞ 010 □	10.0	8.0	0.15
150	C	TC212C157 Ⓞ 010 □	15.0	10.0	0.7
150	D	TC212D157 Ⓞ 010 □	15.0	8.0	0.15
150	E	TC212E157 Ⓞ 010 □	15.0	8.0	0.15
220	D	TC212D227 Ⓞ 010 □	22.0	8.0	0.15
220	E	TC212E227 Ⓞ 010 □	22.0	8.0	0.15
330	D	TC212D337 Ⓞ 010 □	33.0	10.0	0.15
330	E	TC212E337 Ⓞ 010 □	33.0	10.0	0.2
470	E	TC212E477 Ⓞ 010 □	47.0	10.0	0.2
16V, +85°C (10V @ +125°C)					
1	A	TC212A105 Ⓞ 016 □	0.5	4.0	8.0
1.5	A	TC212A155 Ⓞ 016 □	0.5	6.0	6.0
2.2	A	TC212A225 Ⓞ 016 □	0.5	6.0	4.0
2.2	B	TC212B225 Ⓞ 016 □	0.5	6.0	3.0
3.3	A	TC212A335 Ⓞ 016 □	0.5	6.0	5.0
3.3	B	TC212B335 Ⓞ 016 □	0.5	6.0	2.5
4.7	A	TC212A475 Ⓞ 016 □	0.8	6.0	5.0
4.7	B	TC212B475 Ⓞ 016 □	0.8	6.0	2.5
4.7	C	TC212C475 Ⓞ 016 □	0.8	6.0	1.5
6.8	A	TC212A685 Ⓞ 016 □	1.1	6.0	5.0
6.8	B	TC212B685 Ⓞ 016 □	1.1	6.0	2.5
6.8	C	TC212C685 Ⓞ 016 □	1.1	6.0	1.0
10	A	TC212A106 Ⓞ 016 □	1.6	8.0	3.0
10	B	TC212B106 Ⓞ 016 □	1.6	6.0	0.8
10	C	TC212C106 Ⓞ 016 □	1.6	6.0	1.5
15	B	TC212B156 Ⓞ 016 □	2.4	6.0	2.0
15	C	TC212C156 Ⓞ 016 □	2.4	6.0	1.2
22	A	TC212A226 Ⓞ 016 □	3.5	15.0	2.0
22	B	TC212B226 Ⓞ 016 □	3.5	8.0	1.5
22	C	TC212C226 Ⓞ 016 □	3.5	6.0	1.2
22	D	TC212D226 Ⓞ 016 □	3.5	6.0	0.6
33	B	TC212B336 Ⓞ 016 □	5.3	8.0	1.0
33	C	TC212C336 Ⓞ 016 □	5.3	6.0	1.0
33	D	TC212D336 Ⓞ 016 □	5.3	6.0	0.5

Rated Cap (uF)	Case	Part Number	DCL(μA) +25°C Max.	DF(%) +25°C 120Hz Max.	ESR(Ω) +25°C 100kHz Max.
47	B	TC212B476 Ⓞ 016 □	7.5	18.0	0.7
47	C	TC212C476 Ⓞ 016 □	7.5	6.0	0.8
47	D	TC212D476 Ⓞ 016 □	7.5	6.0	0.5
68	D	TC212D686 Ⓞ 016 □	10.8	6.0	0.5
100	C	TC212C107 Ⓞ 016 □	16.0	10.0	0.7
100	D	TC212D107 Ⓞ 016 □	16.0	8.0	0.5
150	D	TC212D157 Ⓞ 016 □	24.0	12.0	0.4
150	E	TC212E157 Ⓞ 016 □	24.0	8.0	0.15
220	D	TC212D227 Ⓞ 016 □	35.2	15.0	0.6
220	E	TC212E227 Ⓞ 016 □	35.2	10.0	0.2
330	E	TC212E337 Ⓞ 016 □	52.8	10.0	0.2
20V, +85°C (13V @ +125°C)					
0.68	A	TC212A684 Ⓞ 020 □	0.5	4.0	10.0
1	A	TC212A105 Ⓞ 020 □	0.5	4.0	8.0
1.5	A	TC212A155 Ⓞ 020 □	0.5	6.0	4.5
1.5	B	TC212B155 Ⓞ 020 □	0.5	6.0	1.5
2.2	A	TC212A225 Ⓞ 020 □	0.5	6.0	4.0
2.2	B	TC212B225 Ⓞ 020 □	0.5	6.0	3.0
3.3	A	TC212A335 Ⓞ 020 □	0.7	6.0	6.0
3.3	B	TC212B335 Ⓞ 020 □	0.7	6.0	2.5
4.7	A	TC212A475 Ⓞ 020 □	0.9	6.0	3.5
4.7	B	TC212B475 Ⓞ 020 □	0.9	6.0	2.5
4.7	C	TC212C475 Ⓞ 020 □	0.9	6.0	1.2
6.8	A	TC212A685 Ⓞ 020 □	1.4	8.0	3.0
6.8	B	TC212B685 Ⓞ 020 □	1.4	6.0	2.5
6.8	C	TC212C685 Ⓞ 020 □	1.4	6.0	1.2
6.8	D	TC212D685 Ⓞ 020 □	1.4	6.0	0.8
10	B	TC212B106 Ⓞ 020 □	2.0	6.0	2.0
10	C	TC212C106 Ⓞ 020 □	2.0	6.0	1.2
10	D	TC212D106 Ⓞ 020 □	2.0	6.0	0.8
15	C	TC212C156 Ⓞ 020 □	3.0	6.0	1.2
15	D	TC212D156 Ⓞ 020 □	3.0	6.0	0.8
22	B	TC212B226 Ⓞ 020 □	4.4	8.0	3.0
22	C	TC212C226 Ⓞ 020 □	4.4	6.0	0.4
22	D	TC212D226 Ⓞ 020 □	4.4	6.0	0.5
33	C	TC212C336 Ⓞ 020 □	6.6	6.0	0.6
33	D	TC212D336 Ⓞ 020 □	6.6	6.0	0.4
47	C	TC212C476 Ⓞ 020 □	9.4	10.0	0.8
47	D	TC212D476 Ⓞ 020 □	9.4	6.0	0.6
47	E	TC212E476 Ⓞ 020 □	9.4	6.0	0.3
68	D	TC212D686 Ⓞ 020 □	13.6	6.0	0.4
68	E	TC212E686 Ⓞ 020 □	13.6	6.0	0.3
100	D	TC212D107 Ⓞ 020 □	20.0	8.0	0.2
100	E	TC212E107 Ⓞ 020 □	20.0	8.0	0.2
150	E	TC212E157 Ⓞ 020 □	30.0	8.0	0.2
25V, +85°C (16V @ +125°C)					
0.33	A	TC212A334 Ⓞ 025 □	0.5	4.0	12.0
0.47	A	TC212A474 Ⓞ 025 □	0.5	4.0	10.0
0.68	A	TC212A684 Ⓞ 025 □	0.5	4.0	6.0
1	A	TC212A105 Ⓞ 025 □	0.5	4.0	6.0

SPECIFICATIONS

TC212 TYPE

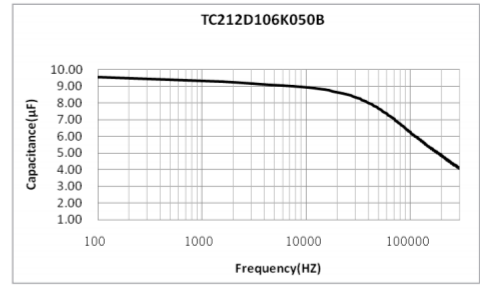
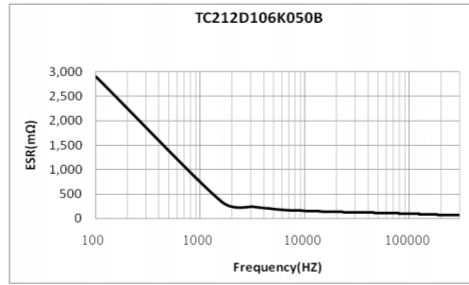
Rated Cap (uF)	Case	Part Number	DCL(μA) +25°C Max.	DF(%) +25°C 120Hz Max.	ESR(Ω) +25°C 100kHz Max.
1.0	B	TC212B105 ○ 025 □	0.5	4.0	4.0
1.5	A	TC212A155 ○ 025 □	0.5	6.0	5.0
1.5	B	TC212B155 ○ 025 □	0.5	6.0	3.5
2.2	A	TC212A225 ○ 025 □	0.6	6.0	4.0
2.2	B	TC212B225 ○ 025 □	0.6	6.0	3.0
2.2	C	TC212C225 ○ 025 □	0.6	6.0	2.0
3.3	A	TC212A335 ○ 025 □	0.8	6.0	3.0
3.3	B	TC212B335 ○ 025 □	0.8	6.0	2.5
3.3	C	TC212C335 ○ 025 □	0.8	6.0	2.0
4.7	A	TC212A475 ○ 025 □	1.2	8.0	3.0
4.7	B	TC212B475 ○ 025 □	1.2	6.0	1.0
4.7	C	TC212C475 ○ 025 □	1.2	6.0	0.6
6.8	B	TC212B685 ○ 025 □	1.7	6.0	1.2
6.8	C	TC212C685 ○ 025 □	1.7	6.0	0.8
6.8	D	TC212D685 ○ 025 □	1.7	6.0	0.5
10	B	TC212B106 ○ 025 □	2.5	6.0	2.0
10	C	TC212C106 ○ 025 □	2.5	6.0	1.4
10	D	TC212D106 ○ 025 □	2.5	6.0	0.8
15	B	TC212B156 ○ 025 □	3.8	8.0	3.0
15	C	TC212C156 ○ 025 □	3.8	6.0	1.2
15	D	TC212D156 ○ 025 □	3.8	6.0	0.8
22	C	TC212C226 ○ 025 □	5.5	6.0	1.0
22	D	TC212D226 ○ 025 □	5.5	6.0	0.6
33	D	TC212D336 ○ 025 □	8.3	6.0	0.6
33	E	TC212E336 ○ 025 □	8.3	6.0	0.5
47	D	TC212D476 ○ 025 □	11.7	6.0	0.4
47	E	TC212E476 ○ 025 □	11.7	6.0	0.4
68	E	TC212E686 ○ 025 □	17.0	6.0	0.3
35V, +85°C (20V @ +125°C)					
0.33	A	TC212A334 ○ 035 □	0.5	4.0	12.0
0.47	A	TC212A474 ○ 035 □	0.5	4.0	10.0
0.47	B	TC212B474 ○ 035 □	0.5	4.0	6.0
0.68	A	TC212A684 ○ 035 □	0.5	4.0	6.0
0.68	B	TC212B684 ○ 035 □	0.5	4.0	6.0
1	A	TC212A105 ○ 035 □	0.5	4.0	8.0
1	B	TC212B105 ○ 035 □	0.5	4.0	2.0
1.5	B	TC212B155 ○ 035 □	0.5	6.0	4.0
1.5	C	TC212C155 ○ 035 □	0.5	6.0	3.0
2.2	A	TC212A225 ○ 035 □	0.8	6.0	3.0
2.2	B	TC212B225 ○ 035 □	0.8	6.0	3.0
2.2	C	TC212C225 ○ 035 □	0.8	6.0	2.5
3.3	B	TC212B335 ○ 035 □	1.2	6.0	3.0

Rated Cap (uF)	Case	Part Number	DCL(μA) +25°C Max.	DF(%) +25°C 120Hz Max.	ESR(Ω) +25°C 100kHz Max.
3.3	C	TC212C335 ○ 035 □	1.2	6.0	2.0
4.7	B	TC212B475 ○ 035 □	1.6	6.0	2.0
4.7	C	TC212C475 ○ 035 □	1.6	6.0	2.0
4.7	D	TC212D475 ○ 035 □	1.6	6.0	1.0
6.8	C	TC212C685 ○ 035 □	2.4	6.0	1.2
6.8	D	TC212D685 ○ 035 □	2.4	6.0	0.8
10	C	TC212C106 ○ 035 □	3.5	6.0	1.5
10	D	TC212D106 ○ 035 □	3.5	6.0	0.6
10	E	TC212E106 ○ 035 □	3.5	6.0	0.6
15	D	TC212D156 ○ 035 □	5.25	6.0	0.8
15	E	TC212E156 ○ 035 □	5.3	6.0	0.6
22	D	TC212D226 ○ 035 □	7.7	6.0	0.6
22	E	TC212E226 ○ 035 □	7.7	6.0	0.3
33	E	TC212E336 ○ 035 □	11.0	6.0	0.5
47	E	TC212E476 ○ 035 □	16.5	8.0	0.5
50V, +85°C (32V @ +125°C)					
0.15	B	TC212B154 ○ 050 □	0.5	4.0	12.0
0.22	A	TC212A224 ○ 050 □	0.5	4.0	15.0
0.22	B	TC212B224 ○ 050 □	0.5	4.0	12.0
0.33	A	TC212A334 ○ 050 □	0.5	4.0	12.0
0.33	B	TC212B334 ○ 050 □	0.5	4.0	8.0
0.47	A	TC212A474 ○ 050 □	0.5	4.0	8.0
0.47	B	TC212B474 ○ 050 □	0.5	4.0	6.0
0.47	C	TC212C474 ○ 050 □	0.5	4.0	5.0
0.68	A	TC212A684 ○ 050 □	0.5	4.0	8.0
0.68	B	TC212B684 ○ 050 □	0.5	4.0	5.0
0.68	C	TC212C684 ○ 050 □	0.5	4.0	4.0
1	B	TC212B105 ○ 050 □	0.5	6.0	4.0
1	C	TC212C105 ○ 050 □	0.5	4.0	3.5
1.5	B	TC212B155 ○ 050 □	0.8	6.0	3.5
1.5	C	TC212C155 ○ 050 □	0.8	6.0	2.5
2.2	B	TC212B225 ○ 050 □	1.1	6.0	1.5
2.2	C	TC212C225 ○ 050 □	1.1	6.0	3.0
2.2	D	TC212D225 ○ 050 □	1.1	6.0	2.0
3.3	B	TC212B335 ○ 050 □	1.7	6.0	3.0
3.3	C	TC212C335 ○ 050 □	1.7	6.0	2.0
3.3	D	TC212D335 ○ 050 □	1.7	6.0	1.0
4.7	D	TC212D475 ○ 050 □	2.4	6.0	0.8
6.8	D	TC212D685 ○ 050 □	3.4	6.0	0.7
10	D	TC212D106 ○ 050 □	5.0	6.0	0.7
10	E	TC212E106 ○ 050 □	5.0	6.0	0.4
15	E	TC212E156 ○ 050 □	7.5	6.0	0.4

※ ○ :Capacitance tolerance code (K=±10%, M=±20%); □ : Internal code (B=Black molded case, Laser marking; Y=Yellow molded case, Laser marking).

Chip Solid MnO2 Tantalum Capacitor
Chip Solid Polymer Tantalum Capacitor
Chip Solid MnO2 Tantalum Capacitor
Chip Solid Polymer Tantalum Capacitor

TYPICAL FREQUENCY CHARACTERISTICS



X-ON Electronics

Largest Supplier of Electrical and Electronic Components

Click to view similar products for [Tantalum Capacitors - Solid SMD category:](#)

Click to view products by [Sunlord manufacturer:](#)

Other Similar products are found below :

[CWR06HC106KB](#) [CWR09DC226KBB-TR25](#) [CWR09FC476KB-TR25](#) [CWR09HC106KR-TR25](#) [CWR09HK106KB-TR25](#)
[CWR09KC156KP](#) [CWR09MC335KCB](#) [CWR09MC335KCB\TR](#) [CWR09NC335MM](#) [CWR11HC105KB](#) [B45197-A2157-M509](#)
[B45197A5226M409](#) [NTP337M6.3TRD\(18\)F](#) [CWR06KC106KP](#) [CWR09DC476KC-TR25](#) [CWR09FC105KB-TR25](#) [CWR09HC226KB-TR25](#)
[CWR09JC685KCA-TR25](#) [CWR09JK105KB-TR25](#) [CWR09JK156MM](#) [CWR09KC106KBC-TR25](#) [CWR09KC106KCB\W](#)
[CWR09KC156JBB-TR25](#) [CWR11MH685KBA](#) [CWR19FC107KBGB](#) [CWR19HC226KBFB](#) [CWR29JC226KBHC-TR25](#) [TCP0J685M8R](#)
[B45196-H5106-K309](#) [B45196-H6226-K509](#) [CWR09JC225JBB](#) [TAJB106M016R](#) [M39006/22-0640H](#) [T83E107K016RCCL](#)
[T83D685K035RCCL](#) [CWR11JC225KB](#) [CWR11HH105KB](#) [293D475X0035B2DE3](#) [NTC-T476K20TRDF](#) [293D155X9020A2DE3](#)
[CWR29FC106KDBC](#) [CWR29HC106KCDC](#) [CWR29FC475KDDC](#) [CWR29HC225KCAC](#) [CWR09JH105KC](#) [CWR29JC335KDDC](#)
[CWR29KC226JCGC](#) [CWR29DC337KCHC](#) [595D686X9010B2T](#) [TAJD475K050KNJ](#)