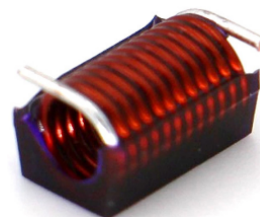
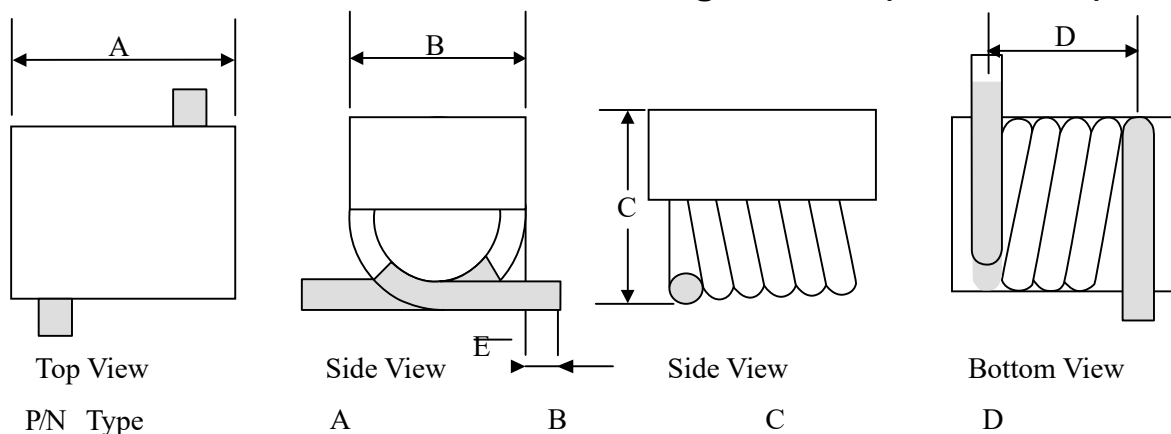


Air Core Coil Features

- Air core inductors feature high Q and current handling
- Acrylic top provides a flat surface for pick and place
- Solder coated leads ensure reliable soldering
- Operating temperature range: -40°C to $+125^{\circ}\text{C}$
- Storage temperature range: -55°C to $+145^{\circ}\text{C}$



Air Core Coil Inductor Dimensions & Configurations (Unit In mm)

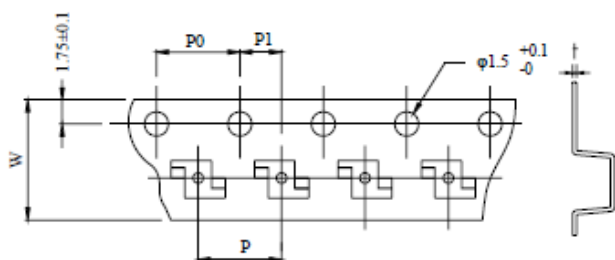


P/N Type	A	B	C	D	E
SCA1812H Series	4.90 ± 0.3	3.80 ± 0.2	3.50 ± 0.2	4.30 ± 0.4	1.00 ± 0.3

Specification

Part Number	(A)Max	Inductance (nH) +3%	Q(min)	Test Freq (MHz)	DCR (mΩ)Max	SRF(GHz)(min)
SCA1812H22NGTT	3.0	22	100	150	4.2	3.20
SCA1812H27NGTT	3.5	27	100	150	4.0	2.70
SCA1812H33NGTT	3.0	33	100	150	4.8	2.50
SCA1812H39NGTT	3.0	39	100	150	4.4	2.10
SCA1812H47NGTT	3.0	47	100	150	5.6	2.10
SCA1812H56NGTT	3.0	56	100	150	6.2	1.50
SCA1812H68NGTT	2.5	68	100	150	8.2	1.50
SCA1812H82NGTT	2.5	82	100	150	9.4	1.30
SCA1812HR10GTT	1.7	100	100	150	12.3	1.20
SCA1812HR12GTT	1.5	120	100	150	17.3	1.10
SCA1812HR15GTT	1.2	150	100	150	33.0	0.75

Tape & Reel Information



Parameter	Units	Value
Qty per reel	PCS	1200
Reel Size	mm	330
Tape Width	mm	16.00
P	mm	12.00
Po	mm	4.00
P1	mm	6.00

- Packing Quantity
Reel : 500 PCS / R

X-ON Electronics

Largest Supplier of Electrical and Electronic Components

Click to view similar products for [Fixed Inductors](#) category:

Click to view products by [Sunltech](#) manufacturer:

Other Similar products are found below :

[CR32NP-100KC](#) [CR54NP-470LC](#) [70F224AI](#) [MGDQ4-00004-P](#) [MHQ1005P10NJ](#) [MHQ1005P1N0S](#) [MHQ1005P2N4S](#) [MHQ1005P3N6S](#)
[MHQ1005P5N1S](#) [MHQ1005P8N2J](#) [PE-53601NL](#) [PE-53602NL](#) [PG0936.113NLT](#) [9220-20](#) [9310-16](#) [PM06-2N7](#) [PM06-39NJ](#) [A01TK](#)
[1206CS-471XJ](#) [HC2-R47-R](#) [HC8-1R2-R](#) [HCF1305-3R3-R](#) [1206CS-151XG](#) [RCH664NP-140L](#) [RCH664NP-4R7M](#) [RCP1317NP-391L](#)
[RCR110DNP-331L](#) [DH2280-4R7M](#) [DS1608C-106](#) [B10TJ](#) [B82498B3101J000](#) [ELJ-RE27NJF2](#) [1812CS-153XJ](#) [1812CS-183XJ](#) [1812CS-](#)
[223XJ](#) [1812LS-104XJ](#) [1812LS-105XJ](#) [1812LS-124XJ](#) [1812LS-154XJ](#) [1812LS-223XJ](#) [1812LS-224XJ](#) [1812LS-563XJ](#) [1812LS-683XJ](#)
[1812LS-824XJ](#) [NIN-FB101JTR110F](#) [NIN-FB471JTR62F](#) [NIN-FC1R5JTR220F](#) [NIN-HCR15JTRF](#) [NIN-HCR33JTRF](#) [NIN-HDR22JTRF](#)