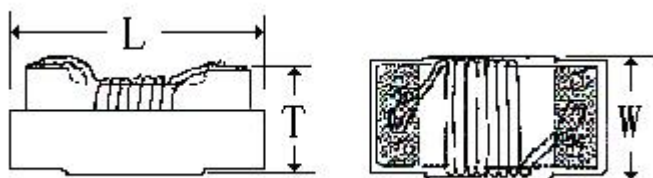
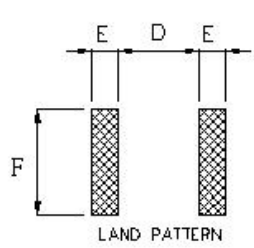


SHAPE & DIMENSION (UNIT:mm)


CODE	L	W	T	E	F	D
DIMENSION	2.92MAX	2.70MAX	2.23MAX	1.02Typ.	2.54Typ.	1.27Typ.

Marking Code:	Size:	Color:	typeface:
PAD LAYOUT(MM):		ELEGREICAL SCHEMATIC:	
 <p>LAND PATTERN</p>			

ELEGREICAL SPECIFICATION

MEAS. ITEM	SPEC.				TEST FREQ.	CONDITIONS
L	10	μH	±	10%	2.50MHz/0.5V	Ta=25°C, I_{dc}=0A HP4286A
Q	12		Min		2.50MHz/0.5V	HP4286A
DCR	2.95	Ω	Max			Ta=25°C 502BC
I_{sat}	300	mA	Max			Δ ≤ 40°C VR116+VR7210
SRF	60	MHz	Min			E5071C ENA

GENERAL SPECIFICATION

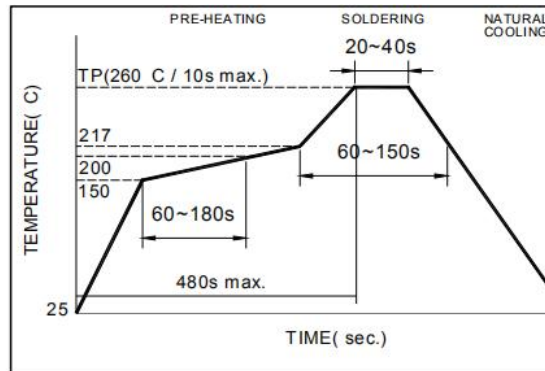
Electrical specifications :	at 25°C
Operation Temperature:	-40~+125°C
Storage Temperature:	-40~+125°C

Reliability Test

No.	Item	Specification	Test Method
1	Temperature Shock.	Appearance: No damage. Inductance: within $\pm 10\%$ of initial.	Temperature: $-25 \pm 2^\circ\text{C} \sim +105 \pm 2^\circ\text{C}$ Kept for 30 minutes. Transition time : 5 minutes. 100 Cycles.
2	Humidity Resistance.	Appearance: No damage. Inductance: within $\pm 10\%$ of initial.	Temperature: $40 \pm 2^\circ\text{C}$. Relative Humidity: 90%. Duration: 500 +4/-0 hours.
3	High Temperature Resistance.	Appearance: No damage. Inductance: within $\pm 10\%$ of initial.	Temperature: $105 \pm 2^\circ\text{C}$. Duration: 1000 +4/-0 hours.
4	Low Temperature Resistance.	Appearance: No damage. Inductance: within $\pm 10\%$ of initial.	Temperature: $-25 \pm 2^\circ\text{C}$. Duration: 1000 +4/-0 hours.
5	Vibration test.	Appearance: No damage. Inductance: within $\pm 10\%$ of initial.	Oscillation Frequency: 10Hz to 55Hz to 10Hz in 60 seconds as a period. Total amplitude: 1.5mm. Testing Time: a period of 2 hours in each 3 mutually perpendicular directions (total of 6 hours).
6	Solderability Heat test.	Appearance: No damage. Inductance: within $\pm 10\%$ of initial.	Solder temperature: $260 \pm 5^\circ\text{C}$. Duration: 5 sec. Allowed reflow time: 2 times.
7	Solderability test.	90% or more of electrode area shall be coated by new solder.	Preheating: 160°C , 60sec. Solder temperature: $245 \pm 5^\circ\text{C}$. Duration : 5 sec.
8	Flexure Strength.	No visible mechanical damage.	Flexure: 2mm. Pressurizing Speed: 0.5mm/sec. Keep time: 30 ± 1 sec.
9	Terminal Strength.	No visible mechanical damage.	Force: 0.45Kg for 0603 series. Force: 0.9Kg for 0805 series. Force: 1.8Kg for 1008 series above. Keep time: 5 sec, X, Y direct.

SOLDERING CONDITIONS

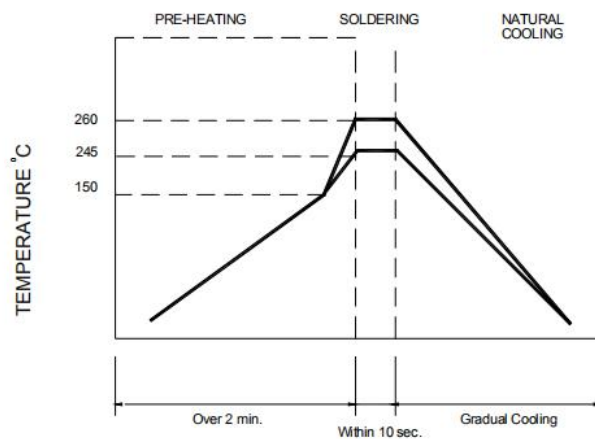
**Figure 1.
Re-flow
Soldering (Lead
Free)**



Note:

- Preheat circuit and products to 150°C
- 260°C tip temperature (max)
- Reflow times: no more than 2 times
- Solder paste thickness: the best 0.08mm is ,but max is 0.1mm

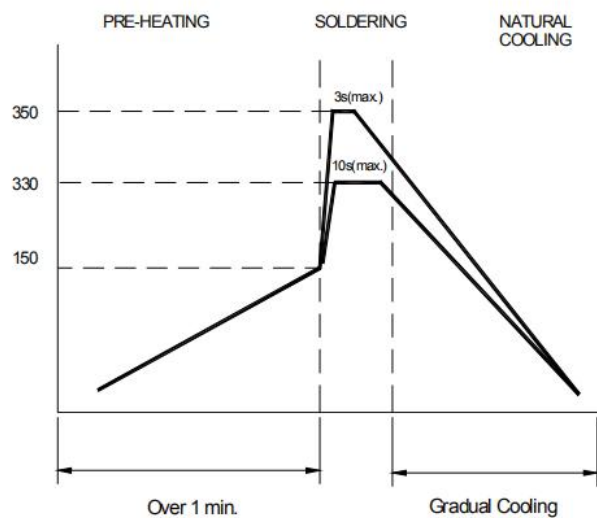
**Figure 2.
Wave Soldering**



Note :

- Never contact the ceramic with the iron tip
- 1.0mm tip diameter (max)

**Figure 3.
Hand Soldering**



Note:

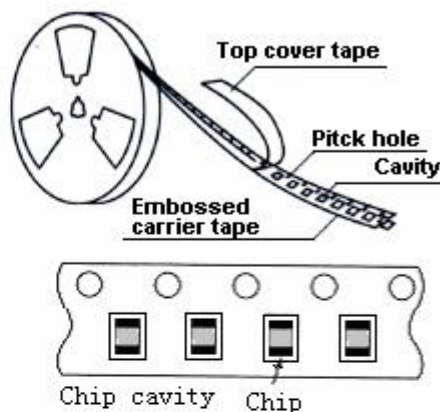
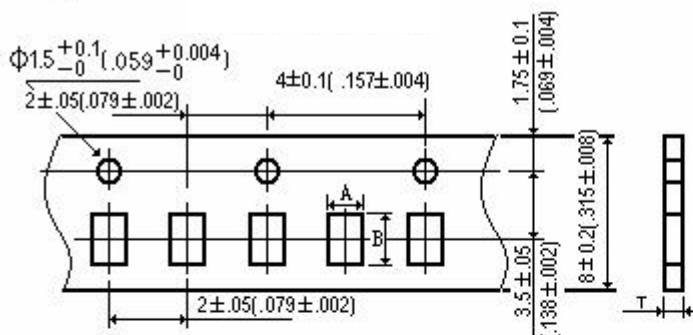
- Use a 20 watt soldering iron with tip diameter of 1.0mm
- Limit soldering time to 3 sec.

TEST DATA FOR PREPRODUCTION SAMPLE

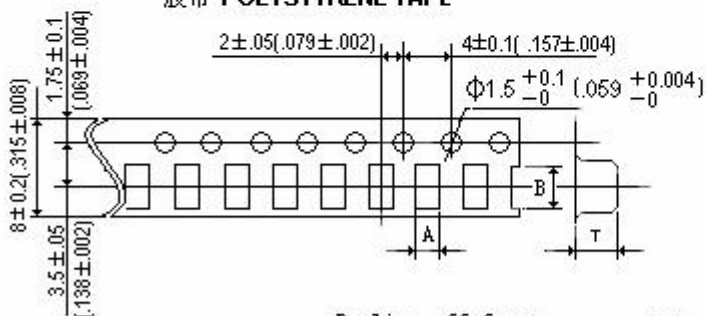
TEST RESOLUTION				DIMENSION (Unit: mm)		
MEAS.	L	D.C.R	Q	L	W	T
ITEM	uH	Ω		mm	mm	mm
SPEC.	10	2.95	12	2.92MAX	2.70Max	2.23Max
	±					
	10%	Max	Min			
TEST FREQ.	2.5MHz/ 0.5V	At 25°C	2.5MHz/ 0.5V			
1	9.86	2.16	30.0	2.83	2.44	2.04
2	9.96	2.17	29.0	2.83	2.45	2.03
3	9.89	2.16	30.0	2.82	2.44	2.05
4	10.03	2.16	28.0	2.83	2.43	2.04
5	9.98	2.15	28.0	2.81	2.43	2.03
6	9.88	2.17	30.0	2.83	2.44	2.04
7	10.10	2.16	29.0	2.81	2.43	2.05
8	10.10	2.15	30.0	2.82	2.44	2.05
9	9.78	2.16	30.0	2.82	2.43	2.04
10	10.09	2.16	28.0	2.82	2.45	2.05
AVG.	9.97	2.16	29.20	2.82	2.44	2.04
R	0.32	0.02	2.00	0.02	0.02	0.02

PACKAGING

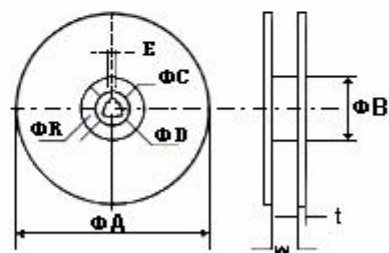
Tape



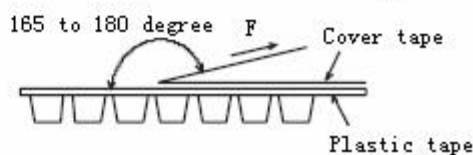
胶带 POLYSTYRENE TAPE



Reel Dimensions



Peeling off force
 Pull strength
 0402~1210: 20g~80g
 Speed of peeling off:
 300mm/min \pm 10%



PACKAGING QUANTITY	2000PCS/RELL
-------------------------------	---------------------

Type	ΦA	ΦB	ΦC	ΦD	E	W	t	R
0402 ~ 1210	178	60	13	21	2	8.4	2	1

X-ON Electronics

Largest Supplier of Electrical and Electronic Components

Click to view similar products for [Fixed Inductors](#) category:

Click to view products by [Sunltech](#) manufacturer:

Other Similar products are found below :

[CR32NP-100KC](#) [CR54NP-470LC](#) [70F224AI](#) [MGDQ4-00004-P](#) [MHQ1005P10NJ](#) [MHQ1005P1N0S](#) [MHQ1005P2N4S](#) [MHQ1005P3N6S](#)
[MHQ1005P5N1S](#) [MHQ1005P8N2J](#) [PE-53601NL](#) [PE-53602NL](#) [PG0936.113NLT](#) [9220-20](#) [9310-16](#) [PM06-2N7](#) [PM06-39NJ](#) [A01TK](#)
[1206CS-471XJ](#) [HC2-R47-R](#) [HC8-1R2-R](#) [HCF1305-3R3-R](#) [1206CS-151XG](#) [RCH664NP-140L](#) [RCH664NP-4R7M](#) [RCP1317NP-391L](#)
[RCR110DNP-331L](#) [DH2280-4R7M](#) [DS1608C-106](#) [B10TJ](#) [B82498B3101J000](#) [ELJ-RE27NJF2](#) [1812CS-153XJ](#) [1812CS-183XJ](#) [1812CS-](#)
[223XJ](#) [1812LS-104XJ](#) [1812LS-105XJ](#) [1812LS-124XJ](#) [1812LS-154XJ](#) [1812LS-223XJ](#) [1812LS-224XJ](#) [1812LS-563XJ](#) [1812LS-683XJ](#)
[1812LS-824XJ](#) [NIN-FB101JTR110F](#) [NIN-FB471JTR62F](#) [NIN-FC1R5JTR220F](#) [NIN-HCR15JTRF](#) [NIN-HCR33JTRF](#) [NIN-HDR22JTRF](#)