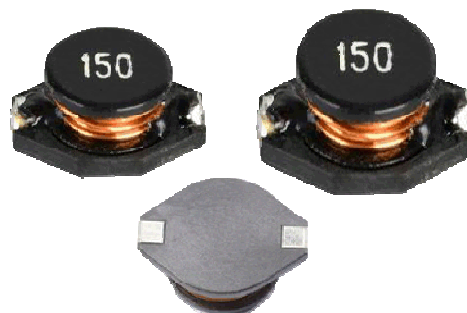


High Current SMD Power Inductor



◆ FEATURES

The Surface Mount Inductors are designed for the smallest possible size and high performance. They are with high energy storage and very Low resistance making them the ideal inductors for DC-DC conversion in the following applications.



◆ APPLICATIONS

VGA display card, Notebook Computers, PDAs, Step-up and step-down converters, Flash Memory programmers, etc.

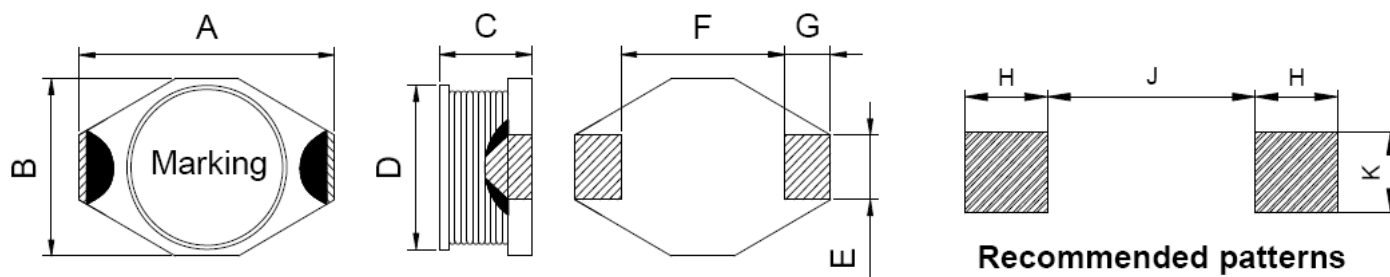
◆ Lead Free Part Numbering

SLQ 3316 F 100 M T T
 (1) (2) (3) (4) (5) (6) (7)

- (1) Series Type
- (2) Dimension
- (3) Material Code
- (4) Inductance: 2R2=2.2 μ H ;
100=10 μ H; 101=100 μ H
- (5) Inductance Tolerance: M=±20%, N=±30%
- (6) Company Code
- (7) Packaging : packed in embossed carrier

◆ Dimensions

| Series | A (Max) | B (Max) | C (Max) | D | E | F | G | H | J | K |
|----------|---------|---------|---------|------|------|------|------|------|-------|------|
| SLQ3316F | 14.0 | 10.0 | 5.2 | 8.4 | 2.54 | 7.6 | 2.54 | 2.92 | 7.37 | 2.79 |
| SLQ3340F | 14.0 | 10.0 | 11.5 | 8.4 | 2.54 | 7.6 | 2.54 | 2.92 | 7.37 | 2.79 |
| SLQ5022F | 19.5 | 15.5 | 7.0 | 12.7 | 2.7 | 12.7 | 2.54 | 2.92 | 13.10 | 2.79 |



◆ Specification

| Part Number | Inductance (μ H) | Test Frequency (Hz) | DCR (Ω) max. | IDC (A) max. |
|------------------------|--------------------------|------------------------|--------------------------|-----------------|
| SLQ3316F Series | | | | |
| SLQ3316F1R0NTT | 1.0 \pm 30% | 0.25V/100K | 0.016 | 8.0 |
| SLQ3316F2R2MTT | 2.2 \pm 20% | 0.25V/100K | 0.022 | 7.0 |
| SLQ 3316F3R3MM | 3.3 \pm 20% | 0.25V/100K | 0.025 | 6.4 |
| SLQ3316F4R7MTT | 4.7 \pm 20% | 0.25V/100K | 0.027 | 4.8 |
| SLQ3316F6R8MTT | 6.8 \pm 20% | 0.25V/100K | 0.038 | 4.5 |
| SLQ3316F100MTT | 10 \pm 20% | 0.25V/100K | 0.05 | 3.8 |
| SLQ 3316F150MTT | 15 \pm 20% | 0.25V/100K | 0.068 | 3.0 |
| SLQ3316F220MTT | 22 \pm 20% | 0.25V/100K | 0.085 | 2.4 |
| SLQ 3316F330MTT | 33 \pm 20% | 0.25V/100K | 0.130 | 2.0 |
| SLQ3316F470MTT | 47 \pm 20% | 0.25V/100K | 0.150 | 1.8 |
| SLQ3316F680MTT | 68 \pm 20% | 0.25V/100K | 0.260 | 1.3 |
| SLQ3316F101MTT | 100 \pm 20% | 0.25V/100K | 0.350 | 1.2 |
| SLQ3316F151MTT | 150 \pm 20% | 0.25V/100K | 0.450 | 0.8 |
| SLQ3316F221MTT | 220 \pm 20% | 0.25V/100K | 0.750 | 0.75 |
| SLQ3316F331MTT | 330 \pm 20% | 0.25V/100K | 1.020 | 0.60 |
| SLQ3316F471MTT | 470 \pm 20% | 0.25V/100K | 1.270 | 0.50 |
| SLQ3316F681MTT | 680 \pm 20% | 0.25V/100K | 2.020 | 0.40 |
| SLQ3316F102MTT | 1000 \pm 20% | 0.25V/100K | 3.500 | 0.35 |

Remark:

- 1、Inductance Tested at 100kHz,0.25Vrms (20 $^{\circ}$ C)
- 2、IDC: DC current at which the inductance drops approximate 20% from its value without current
- 3、Operating Temperature : -25 $^{\circ}$ C ~ +105 $^{\circ}$ C
- 4、Measure Equipment:
 INDUCTANCE : Agilent HP-4284A , HP-4285A
 IDC : Agilent HP-4284A+HP-42841A
 DCR : CHEN HWA 502A

◆ Specification

| Part Number | Inductance (μ H) | Test Frequency (Hz) | DCR (Ω) max. | IDC (A) max. |
|------------------------|--------------------------|------------------------|--------------------------|-----------------|
| SLQ3340F Series | | | | |
| SLQ3340F6R8MTT | 6.8 \pm 20% | 0.25V/100K | 0.030 | 6.0 |
| SLQ3340F100MTT | 10 \pm 20% | 0.25V/100K | 0.038 | 5.5 |
| SLQ3340F180MTT | 18 \pm 20% | 0.25V/100K | 0.075 | 5.0 |
| SLQ3340F220MTT | 22 \pm 20% | 0.25V/100K | 0.080 | 4.0 |
| SLQ3340F330MTT | 33 \pm 20% | 0.25V/100K | 0.100 | 3.8 |
| SLQ3340F470MTT | 47 \pm 20% | 0.25V/100K | 0.120 | 3.5 |
| SLQ3340F680MTT | 68 \pm 20% | 0.25V/100K | 0.190 | 2.7 |
| SLQ3340F101MTT | 100 \pm 20% | 0.25V/100K | 0.250 | 2.5 |
| SLQ3340F331MTT | 330 \pm 20% | 0.25V/100K | 0.700 | 1.2 |
| SLQ3340F471MTT | 470 \pm 20% | 0.25V/100K | 0.950 | 1.0 |
| SLQ3340F681MTT | 680 \pm 20% | 0.25V/100K | 1.200 | 1.0 |
| SLQ3340F202MTT | 2000 \pm 20% | 0.25V/100K | 5.300 | 0.45 |
| SLQ3340F222MTT | 2200 \pm 20% | 0.25V/100K | 5.400 | 0.40 |

Remark:

- 1、Inductance Tested at 100kHz,0.25Vrms (20 $^{\circ}$ C)
- 2、IDC: DC current at which the inductance drops approximate 20% from its value without current
- 3、Operating Temperature : -25 $^{\circ}$ C ~ +105 $^{\circ}$ C
- 4、Measure Equipment:
 INDUCTANCE : Agilent HP-4284A , HP-4285A
 IDC : Agilent HP-4284A+HP-42841A
 DCR : CHEN HWA 502A

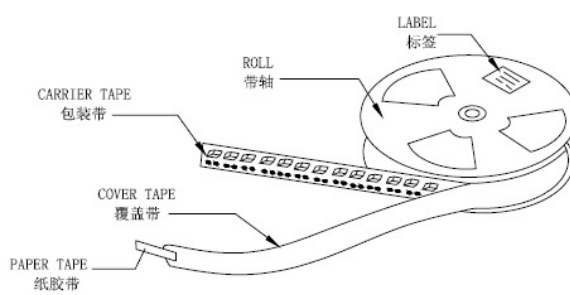
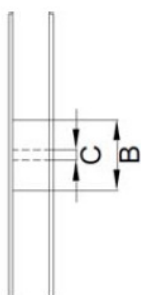
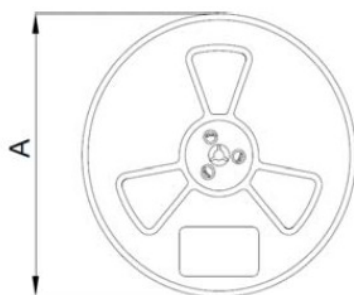
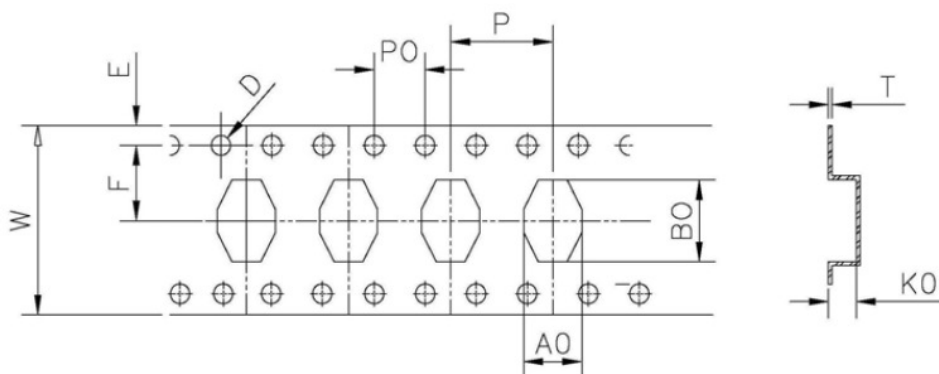
◆ Specification

| Part Number | Inductance (μ H) | Test Frequency (Hz) | DCR (Ω) max. | IDC (A) max. |
|------------------------|--------------------------|------------------------|--------------------------|-----------------|
| SLQ5022F Series | | | | |
| SLQ5022F1R0NTT | 1.0 \pm 30% | 0.25V/100K | 0.009 | 20.0 |
| SLQ5022F4R7MTT | 4.7 \pm 20% | 0.25V/100K | 0.020 | 10.0 |
| SLQ5022F5R6MTT | 5.6 \pm 20% | 0.25V/100K | 0.026 | 7.0 |
| SLQ5022F100MTT | 10 \pm 20% | 0.25V/100K | 0.030 | 6.0 |
| SLQ5022F270MTT | 27 \pm 20% | 0.25V/100K | 0.065 | 5.7 |
| SLQ5022F330MTT | 33 \pm 20% | 0.25V/100K | 0.090 | 5.5 |
| SLQ5022F470MTT | 47 \pm 20% | 0.25V/100K | 0.120 | 4.5 |
| SLQ5022F680MTT | 68 \pm 20% | 0.25V/100K | 0.170 | 3.5 |
| SLQ5022F101MTT | 100 \pm 20% | 0.25V/100K | 0.250 | 3.0 |
| SLQ5022F151MTT | 150 \pm 20% | 0.25V/100K | 0.350 | 2.0 |
| SLQ5022F221MTT | 220 \pm 20% | 0.25V/100K | 0.450 | 1.8 |
| SLQ5022F331MTT | 330 \pm 20% | 0.25V/100K | 0.700 | 1.0 |
| SLQ5022F471MTT | 470 \pm 20% | 0.25V/100K | 0.850 | 0.92 |
| SLQ5022F681MTT | 680 \pm 20% | 0.25V/100K | 1.100 | 0.90 |
| SLQ5022F102MTT | 1000 \pm 20% | 0.25V/100K | 1.800 | 0.80 |

Remark:

- 1、Inductance Tested at 100kHz,0.25Vrms (20 $^{\circ}$ C)
- 2、IDC: DC current at which the inductance drops approximate 20% from its value without current
- 3、Operating Temperature : -25 $^{\circ}$ C ~ +105 $^{\circ}$ C
- 4、Measure Equipment:
 INDUCTANCE : Agilent HP-4284A , HP-4285A
 IDC : Agilent HP-4284A+HP-42841A
 DCR : CHEN HWA 502A

◆ PACKAGING SPECIFICATION



| Type | Tape Dimension | | | | | | Reel Dimension | | | Quantity (Pcs/Reel) |
|----------|----------------|------|------|------|-----|------|----------------|-----|----|------------------------|
| | W | A0 | B0 | K0 | D | P | A | B | C | |
| SLQ3316F | 24.0 | 9.5 | 13.5 | 5.5 | 1.5 | 12.0 | 330 | 100 | 13 | 1000 |
| SLQ3340F | 24.0 | 9.5 | 13.3 | 11.7 | 1.5 | 12.0 | 330 | 100 | 13 | 250 |
| SLQ5022F | 32.0 | 15.1 | 19.7 | 6.8 | 1.5 | 20.0 | 330 | 100 | 13 | 500 |

X-ON Electronics

Largest Supplier of Electrical and Electronic Components

Click to view similar products for [Fixed Inductors](#) category:

Click to view products by [Sunltech](#) manufacturer:

Other Similar products are found below :

[CR54NP-470LC](#) [CR54NP-820KC](#) [CR54NP-8R5MC](#) [70F224AI](#) [MGDQ4-00004-P](#) [MHL1ECTTP18NJ](#) [MHQ1005P10NJ](#) [MHQ1005P1N0S](#)
[MHQ1005P2N4S](#) [MHQ1005P3N6S](#) [MHQ1005P5N1S](#) [MHQ1005P8N2J](#) [PE-53601NL](#) [PE-53602NL](#) [PE-53630NL](#) [PE-53824SNLT](#)
[PG0936.113NLT](#) [9220-20](#) [9310-16](#) [PM06-2N7](#) [PM06-39NJ](#) [A01TK](#) [1206CS-471XJ](#) [HC2-R47-R](#) [HC3-R50-R](#) [HC8-1R2-R](#) [HCF1305-3R3-](#)
[R](#) [1206CS-151XG](#) [RCH664NP-140L](#) [RCH664NP-4R7M](#) [RCH8011NP-221L](#) [RCP1317NP-332L](#) [RCP1317NP-391L](#) [RCR1010NP-470M](#)
[RCR110DNP-331L](#) [DH2280-4R7M](#) [DS1608C-106](#) [ASPI-4020HI-R10M-T](#) [B10TJ](#) [B82498B3101J000](#) [ELJ-RE27NJF2](#) [1812CS-153XJ](#)
[1812CS-183XJ](#) [1812CS-223XJ](#) [1812LS-104XJ](#) [1812LS-105XJ](#) [1812LS-124XJ](#) [1812LS-154XJ](#) [1812LS-223XJ](#) [1812LS-224XJ](#)