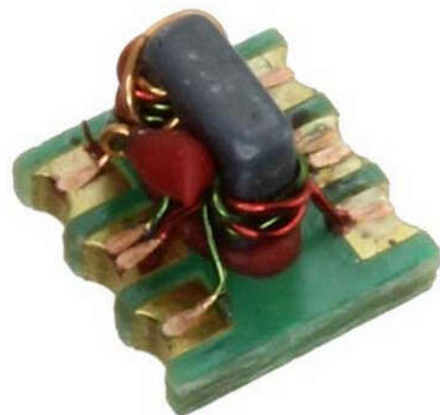


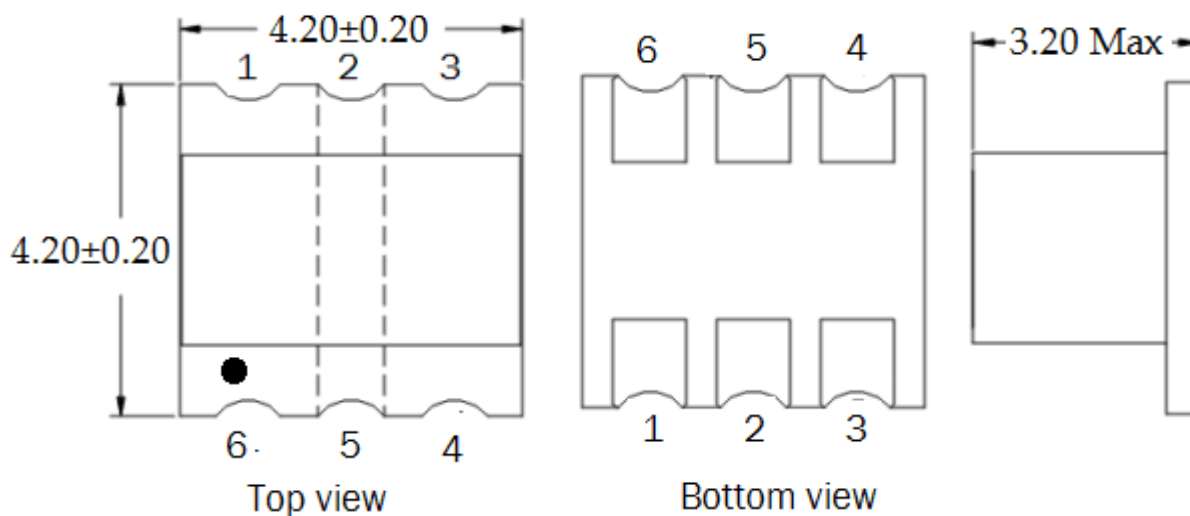
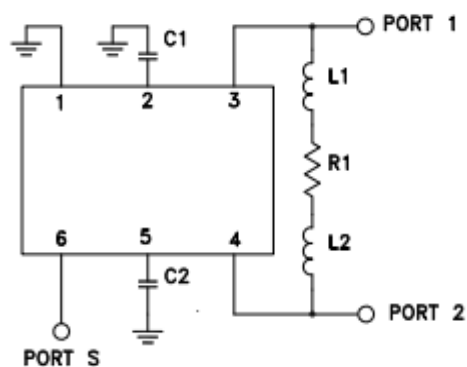
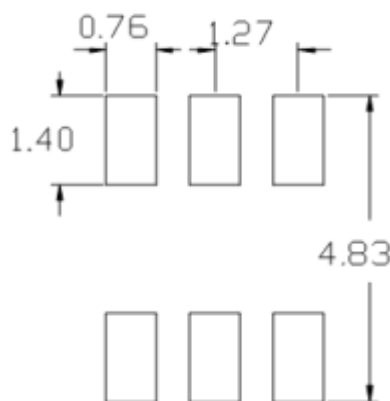
75Ω 2 Way-0° Power Splitter 5-2400 MHz

**Features:**

- ◆ 2 Way-0° Power Splitter/Combiner
- ◆ 75Ω Impedance
- ◆ Power Input(as a splitter): 0.50W
- ◆ DC current: 500mA
- ◆ Operating temperature range: -40°C to +85°C
- ◆ Storage temperature range: -55°C to +100°C

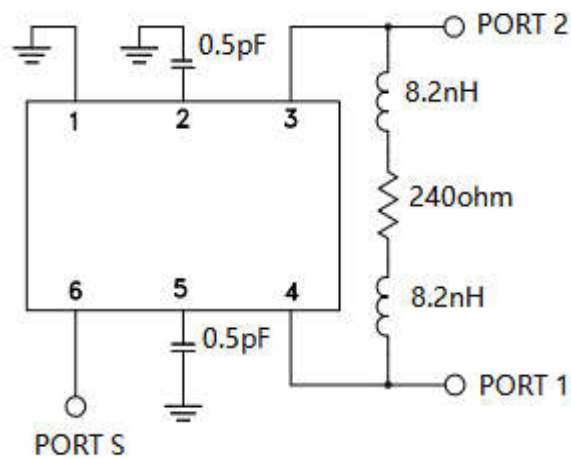

**Applications:**

- ◆ For all CATV Broadband and FTTx applications
- ◆ For VHF/UHF receivers/transmitters and push-pull amplifiers

**Dimension Diagram (Unit:mm) :**

**Electrical structure:**

**Recommended layout:**


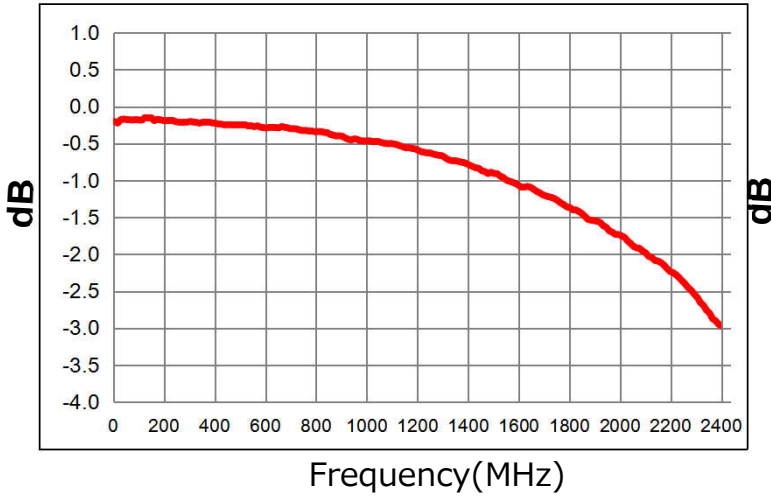
**Pin configuration:**

Pin No.	Function
1	Ground
2	External 0.5pF Capacitor
3	Output 2
4	Output 1
5	External 0.5pF Capacitor
6	Input

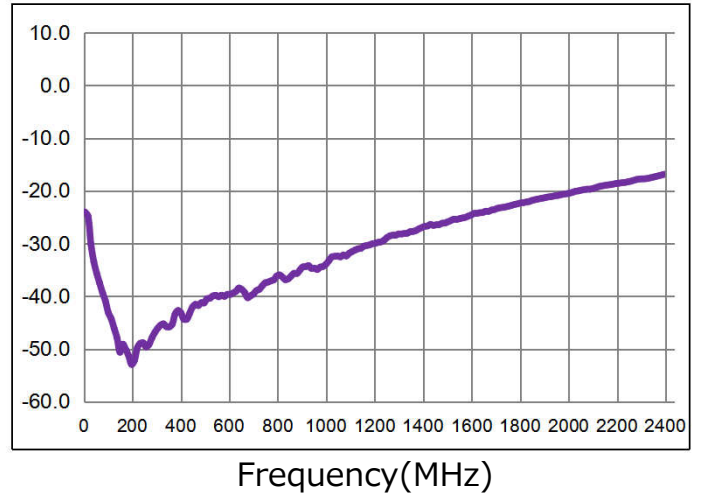
**Application circuit :**

**Electrical Specifications: TA=25°C, 0dBm, Z0=75Ω**

Parameter	Test Conditions	Units	Min	Typ	Max
Main line Loss(out1)	5-1600MHz	dB	—	0.3	1.5
	1600-2400MHz	dB	—	0.8	2.5
Main line Loss(out2)	5-1600MHz	dB	—	0.4	1.8
	1600-2400MHz	dB	—	2.0	4.0
Input Return Loss	5-1600MHz	dB	20.0	35.0	—
	1600-2400MHz	dB	11.0	20.0	—
Output 1 Return Loss	5-1600MHz	dB	18.0	30.0	—
	1600-2400MHz	dB	9.0	17.0	—
Output 2 Return Loss	5-1600MHz	dB	18.0	25.0	—
	1600-2400MHz	dB	11.0	16.0	—
Isolation	5-1600MHz	dB	22.0	45.0	—
	1600-2400MHz	dB	12.0	20.0	—

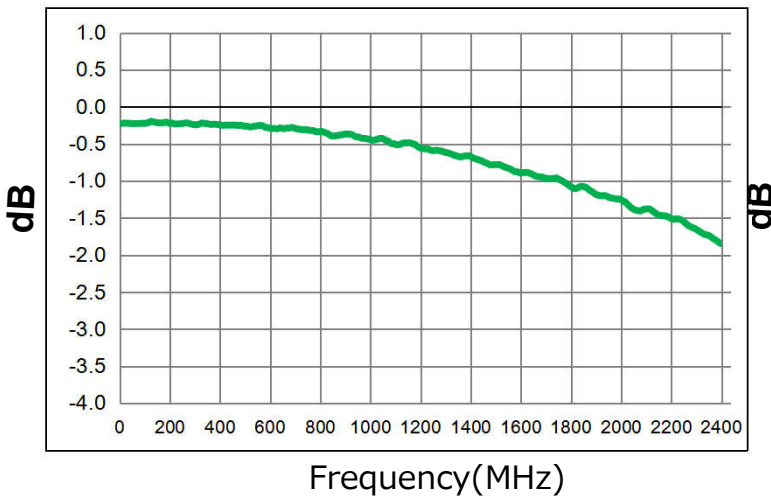
Main line Loss(Pin6-3)



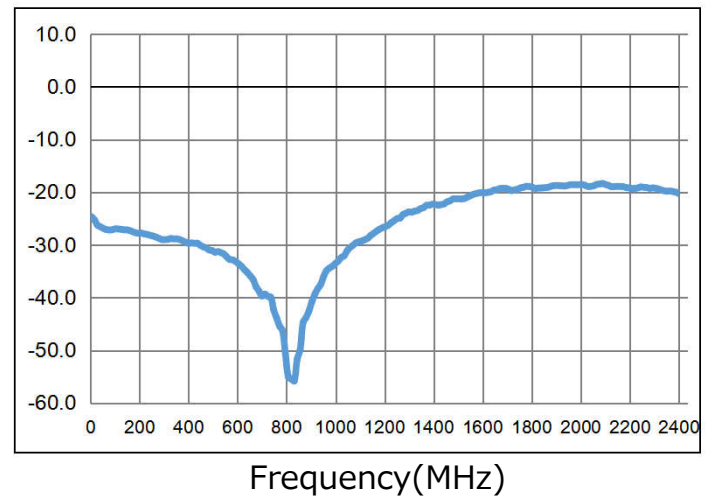
Isolation(Pin4-3)



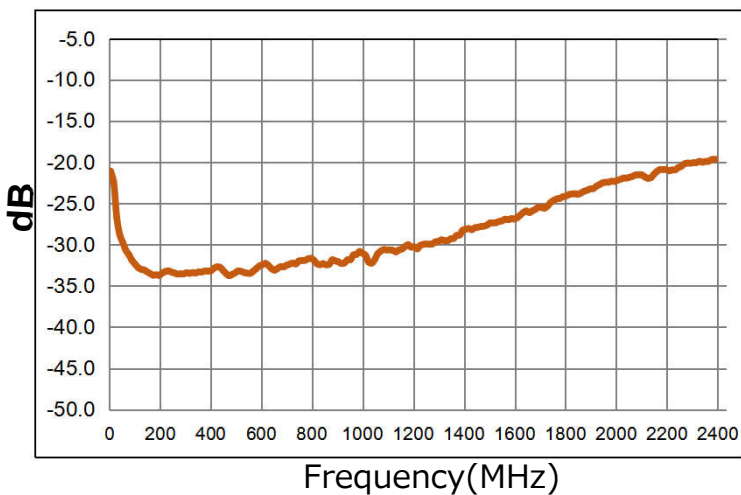
Main line Loss(Pin6-4)



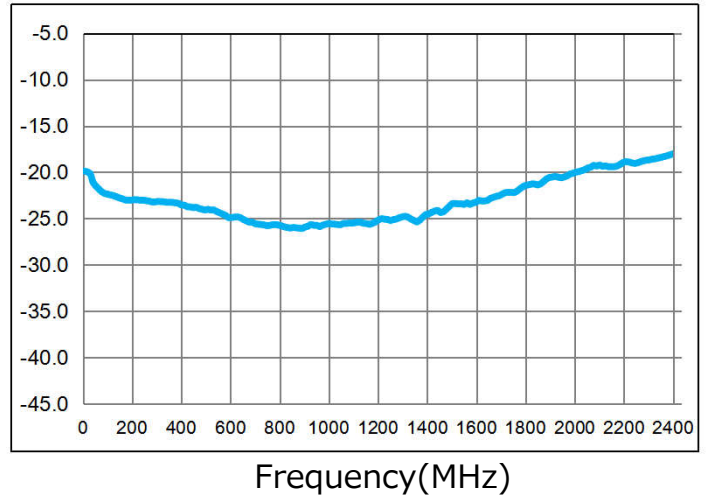
Input Return Loss(Pin6)

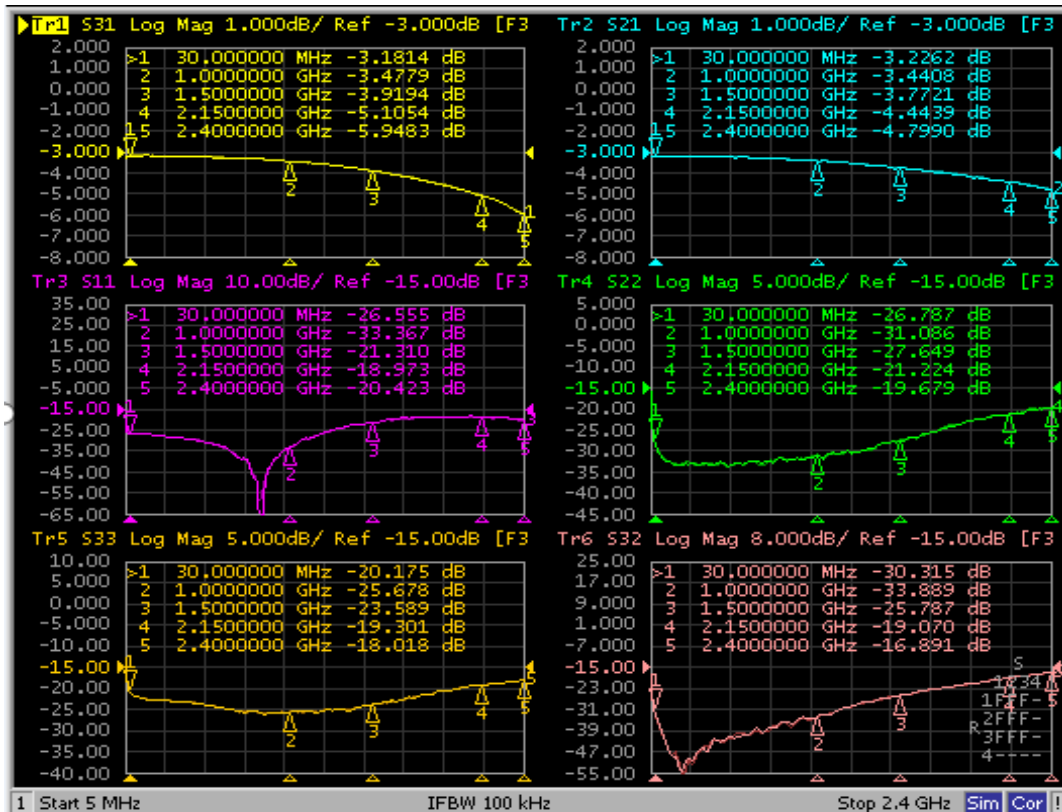
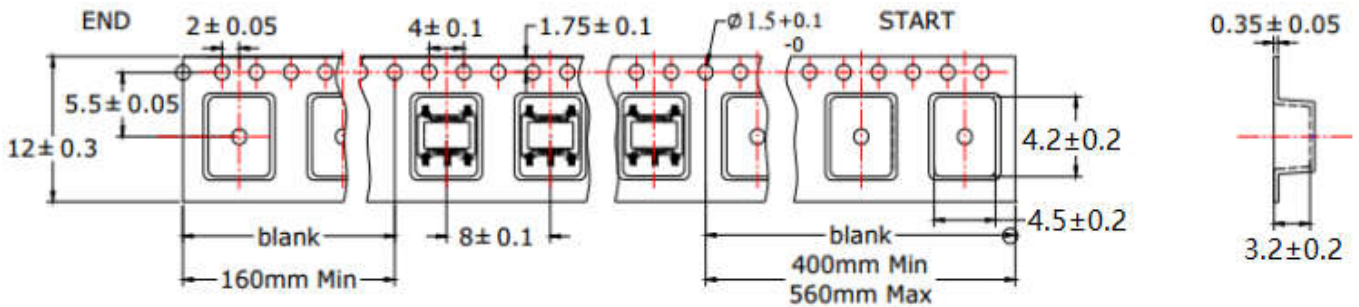


Output 1 Return Loss(Pin4)

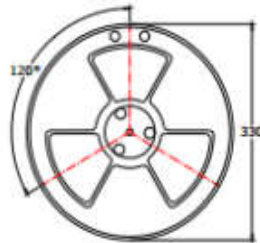


Output 2 Return Loss (Pin3)

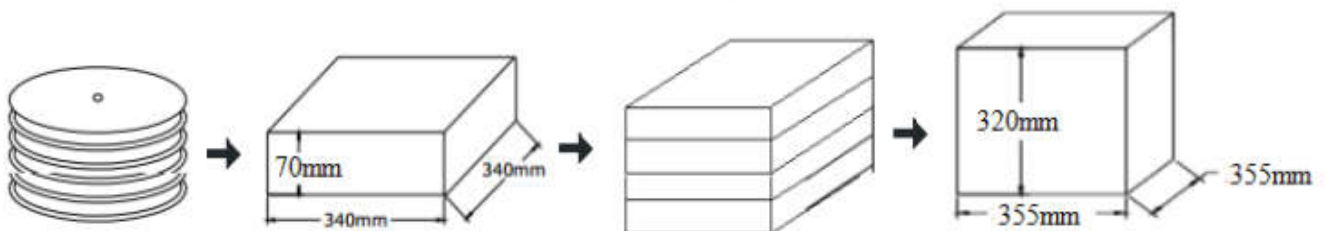


**Network Analyzer Test Data Sheet Photos:**

**Packing Dimension For Caeier Tape(UNIT:mm):**


<b>QUANTITY</b>
2000PCS/Reel
4Reels/Middle Carton Middle Carton:
4 Middle Cartons/Big Carton
32000PCS/ Big Carton



SPEC	8	12	16	24
DIM A±0.1	8.5	12.5	16.5	24.5
DIM B±0.1	2.3	2.3	2.3	2.3
DIM C±0.1	100	100	100	100



## X-ON Electronics

Largest Supplier of Electrical and Electronic Components

*Click to view similar products for [RF Wireless Misc](#) category:*

*Click to view products by [Sunltech](#) manufacturer:*

Other Similar products are found below :

[H-183-4-SMA](#) [R415720000](#) [MABT-011000-14235P](#) [TX98-4](#) [W2SW0001-SHLD](#) [PCF7991AT1081M,1](#) [TCP-3012H-QT](#) [TCP-3027H-QT](#)  
[TCP-3047H-QT](#) [TCP-3068H-QT](#) [BP4C1+](#) [SMAPD011007](#) [SBTC-2-25LX+](#) [H2TCP-2-10+](#) [HT-SC4PS-33+](#) [HLT-0.5/8-4S](#) [HLT-2/8-4S](#)  
[HLT-2/18-2S](#) [HLT-2/8-6S](#) [H2TCP-2-33W+](#) [H2TCP-2-272+](#) [HLT-2/8-2S](#) [HLT-2/8-3S](#) [HT-SBTC-2-20+](#) [HT-SCA-4-10+](#) [HT-ADP-2-1+](#)  
[HLT-0.5/6-2S](#) [HLT-2/8-8S](#) [HT-TCP-2-25+](#) [HT-TCP-2-10+](#) [HLT-0.5/8-2S](#) [HT-SBTC-2-10L](#) [HT-AD4PS-1+](#) [HLT-0.5/6-8S](#) [MA4BN1840-1](#)  
[SX1308IMLTRT](#) [HMC561LP3ETR](#) [STHVDAC-253MF3](#) [ADA4304-4ACPZ-R7](#) [HMC578LC3BTR](#) [HMC814LC3BTR](#) [SML1](#) [CMX7032Q1](#)  
[KC2-36+](#) [KC2-19+](#) [KC2-11+](#) [RLM-23-1WL+](#) [RLM-33-2W+](#) [RLM-751-2WL+](#) [KSX2-722+](#)