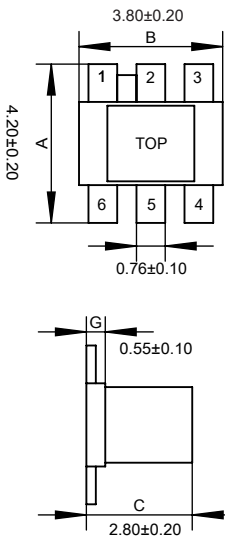


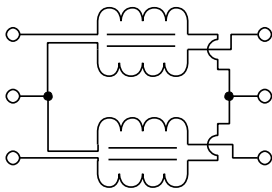
## 50Ω 2 Way-0° Power Divider 5-1000MHz

### Outline Drawing(mm)

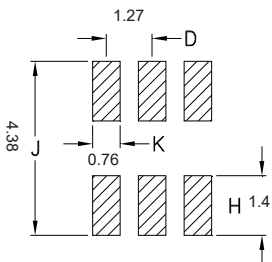


### Electrical structure

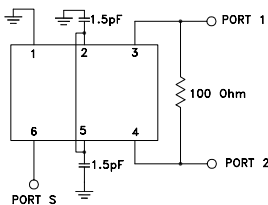
Fig K



### Recommended layout(mm)



### electrical schematic



### Pin Connections

SUM PORT	6
PORT 1	4
PORT 2	3
GROUND	1
EXT. CAPACITOR 1.5pF	2 OR 5 TO GND

### Features

- Operating temperature range: -40°C to +85°C
- Storage temperature range: -55°C to +100°C

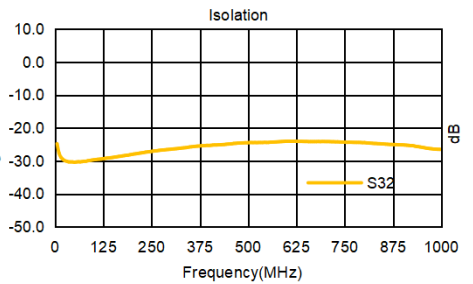
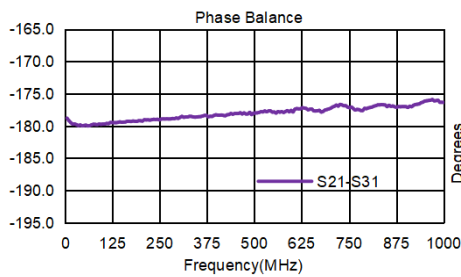
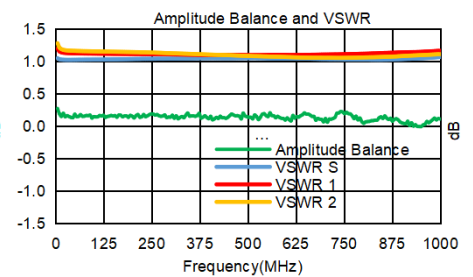
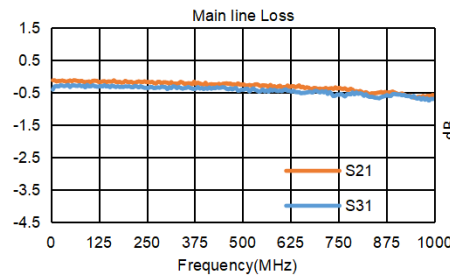
### Applications

- For catv
- For broadband and wireless communications

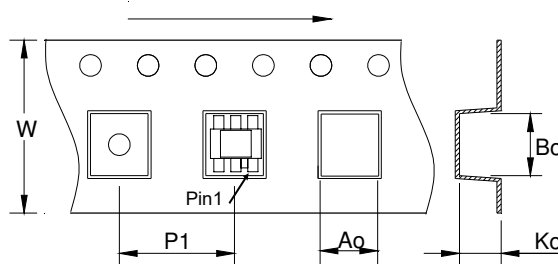


### Electrical Specifications: TA=25°C, 0dBm, Z0=50Ω

Parameter	Test Conditions	Units	Min	Typ	Max
Main line Loss (Pin6-4)	5-1000MHz	dB	—	0.5	1.0
Main line Loss (Pin6-3)	5-1000MHz	dB	—	0.5	1.0
VSWR	5-1000MHz	dB	—	1.0	1.5
Amplitude Unbalance	5-1000MHz	dB	—	0.3	1.0
Phase Unbalance	5-1000MHz	dB	—	5.0	15.0
Isolation	5-1000MHz	dB	16.0	22.0	—



### Carrier Tape Orientation



### Tape & Reel Information

Parameter	Units	Value
Qty per reel	PCS	2000
Reel Size	mm	330
Tape Width	mm	12.00
Pitch	mm	12.00
Ao	mm	4.50
Bo	mm	4.50
Ko	mm	3.20

## X-ON Electronics

Largest Supplier of Electrical and Electronic Components

*Click to view similar products for [RF Wireless Misc](#) category:*

*Click to view products by [Sunltech](#) manufacturer:*

Other Similar products are found below :

[H-183-4-SMA](#) [R415720000](#) [MABT-011000-14235P](#) [TX98-4](#) [W2SW0001-SHLD](#) [PCF7991AT1081M,1](#) [TCP-3012H-QT](#) [TCP-3027H-QT](#)  
[TCP-3047H-QT](#) [TCP-3068H-QT](#) [BP4C1+](#) [SMAPD011007](#) [SBTC-2-25LX+](#) [STCP210+](#) [H2TCP-2-10+](#) [HLT-0.5/6-4S](#) [HT-SC4PS-33+](#) [HLT-](#)  
[0.5/8-4S](#) [HLT-2/8-4S](#) [HLT-2/18-2S](#) [HLT-2/8-6S](#) [H2TCP-2-33W+](#) [H2TCP-2-272+](#) [HLT-2/8-2S](#) [HLT-2/8-3S](#) [HT-SBTC-2-20+](#) [HT-SCA-4-](#)  
[10+](#) [HT-ADP-2-1+](#) [HLT-0.5/6-2S](#) [HLT-2/8-8S](#) [HT-TCP-2-25+](#) [HT-TCP-2-10+](#) [HLT-0.5/8-2S](#) [HT-SBTC-2-10L](#) [HT-AD4PS-1+](#) [HLT-0.5/6-](#)  
[8S](#) [MA4BN1840-1](#) [SX1308IMLTRT](#) [HMC561LP3ETR](#) [STHVDAC-253MF3](#) [ADA4304-4ACPZ-R7](#) [HMC578LC3BTR](#) [HMC814LC3BTR](#)  
[SML1](#) [CMX7032Q1](#) [KC2-36+](#) [KC2-19+](#) [KC2-11+](#) [RLM-23-1WL+](#) [RLM-33-2W+](#)