

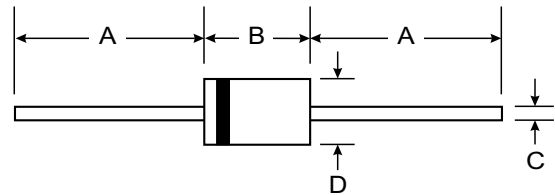
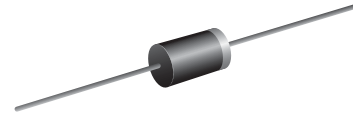
**VOLTAGE RANGE: 6.8 - 600 V**  
**POWER: 1500Watts**

### Features

- Glass Passivated Die Construction  
6.8V – 600V Standoff Voltage
- Uni- and Bi-Directional Versions Available
- Excellent Clamping Capability
- Fast Response Time
- Plastic Case Material has UL Flammability

### Mechanical Data

- Case: DO-201AD Molded Plastic
- Terminals: Axial Leads, Solderable per MIL-STD-202, Method 208
- Polarity: Cathode Band or Cathode Notch
- Unidirectional – Device Code and Cathode Band
- Bidirectional – Device Code Only
- Weight: 1.20 grams (approx.)



DO-201AD		
Dim	Min	Max
A	25.40	—
B	7.20	9.50
C	1.00	1.20
D	4.80	5.30
All Dimensions in mm		

### Maximum Ratings and Electrical Characteristics @ $T_A=25^\circ\text{C}$ unless otherwise specified

Characteristic	Symbol	Value	Unit
Peak Pulse Power Dissipation at $T_A = 25^\circ\text{C}$ (Note 1, 2, 5) Figure 3	PPPM	1500 Minimum	W
Peak Forward Surge Current (Note 3)	IFSM	200	A
Peak Pulse Current on 10/1000 $\mu\text{S}$ Waveform (Note 1) Figure 1	IPPM	See Table 1	A
Steady State Power Dissipation (Note 2, 4)	PM(AV)	5.0	W
Operating and Storage Temperature Range	$T_i, T_{STG}$	-65 to +175	$^\circ\text{C}$

- Note: 1. Non-repetitive current pulse, per Figure 1 and derated above  $T_A = 25^\circ\text{C}$  per Figure 4.  
 2. Mounted on 40mm<sup>2</sup> copper pad.  
 3. 8.3ms single half sine-wave duty cycle = 4 pulses per minutes maximum.  
 4. Lead temperature at  $75^\circ\text{C} = T_L$ .  
 5. Peak pulse power waveform is 10/1000 $\mu\text{S}$ .



TYPE		Reverse Stand-Off Voltage	Breakdown Voltage Min. @I <sub>T</sub>	Breakdown Voltage Max. @ I <sub>T</sub>	Test Current	Maximum Clamping Voltage @I <sub>PP</sub>	Peak Pulse Current	Reverse Leakage @V <sub>RWM</sub>
(UNI)	(BI)	V <sub>RWM</sub> (V)	V <sub>BR MIN</sub> (V)	V <sub>BR MAX</sub> (V)	I <sub>T</sub> (mA)	V <sub>C</sub> (V)	I <sub>PP</sub> (A)	I <sub>R</sub> (uA)
1.5KE6.8	1.5KE6.8C	5.50	6.12	7.48	10	10.	140.7	1000.0
1.5KE6.8A	1.5KE6.8CA	5.80	6.45	7.14	10	10.	144.8	1000.0
1.5KE7.5	1.5KE7.5C	6.05	6.75	8.25	10	11.7	129.9	500.0
1.5KE7.5A	1.5KE7.5CA	6.40	7.13	7.88	10	11.3	134.5	500.0
1.5KE8.2	1.5KE8.2C	6.63	7.38	9.02	10	12.	121.6	200.0
1.5KE8.2A	1.5KE8.2CA	7.02	7.79	8.61	10	12.1	125.6	200.0
1.5KE9.1	1.5KE9.1C	7.37	8.19	10.0	1.0	13.	110.1	50.0
1.5KE9.1A	1.5KE9.1CA	7.78	8.65	9.55	1.0	13.	113.4	50.0
1.5KE10	1.5KE10C	8.10	9.00	11.0	1.0	15.0	101.3	10.0
1.5KE10A	1.5KE10CA	8.55	9.50	10.5	1.0	14.5	104.8	10.0
1.5KE11	1.5KE11C	8.92	9.90	12.1	1.0	16.2	93.8	5.0
1.5KE11A	1.5KE11CA	9.40	10.5	11.6	1.0	15.6	97.4	5.0
1.5KE12	1.5KE12C	9.72	10.8	13.2	1.0	17.3	87.9	5.0
1.5KE12A	1.5KE12CA	10.2	11.4	12.6	1.0	16.7	91.0	5.0
1.5KE13	1.5KE13C	10.5	11.7	14.3	1.0	19.0	80.0	5.0
1.5KE13A	1.5KE13CA	11.1	12.4	13.7	1.0	18.2	83.5	5.0
1.5KE15	1.5KE15C	12.1	13.5	16.5	1.0	22.0	69.1	5.0
1.5KE15A	1.5KE15CA	12.8	14.3	15.8	1.0	21.2	71.7	5.0
1.5KE16	1.5KE16C	12.9	14.4	17.6	1.0	23.5	64.7	5.0
1.5KE16A	1.5KE16CA	13.6	15.2	16.8	1.0	22.5	67.6	5.0
1.5KE18	1.5KE18C	14.5	16.2	19.8	1.0	26.5	57.4	5.0
1.5KE18A	1.5KE18CA	15.3	17.1	18.9	1.0	25.2	60.3	5.0
1.5KE20	1.5KE20C	16.2	18.0	22.0	1.0	29.1	52.2	5.0
1.5KE20A	1.5KE20CA	17.1	19.0	21.0	1.0	27.7	54.9	5.0
1.5KE22	1.5KE22C	17.8	19.8	24.2	1.0	31.9	47.6	5.0
1.5KE22A	1.5KE22CA	18.8	20.9	23.1	1.0	30.6	49.7	5.0
1.5KE24	1.5KE24C	19.4	21.6	26.4	1.0	34.7	43.8	5.0
1.5KE24A	1.5KE24CA	20.5	22.8	25.2	1.0	33.2	45.8	5.0
1.5KE27	1.5KE27C	21.8	24.3	29.7	1.0	39.1	38.9	5.0
1.5KE27A	1.5KE27CA	23.1	25.7	28.4	1.0	37.5	40.5	5.0
1.5KE30	1.5KE30C	24.3	27.0	33.0	1.0	43.5	34.9	5.0
1.5KE30A	1.5KE30CA	25.6	28.5	31.5	1.0	41.4	36.7	5.0
1.5KE33	1.5KE33C	26.8	29.7	36.3	1.0	47.7	31.9	5.0
1.5KE33A	1.5KE33CA	28.2	31.4	34.7	1.0	45.7	33.3	5.0
1.5KE36	1.5KE36C	29.1	32.4	39.6	1.0	52.0	29.2	5.0
1.5KE36A	1.5KE36CA	30.8	34.2	37.8	1.0	49.9	30.5	5.0

For Bi-directional type having VRWM of 10 Volts and less, the IR limit is double



TYPE		Reverse Stand-Off Voltage	Breakdown Voltage Min. @I <sub>T</sub>	Breakdown Voltage Max. @ I <sub>T</sub>	Test Current	Maximum Clamping Voltage @I <sub>PP</sub>	Peak Pulse Current	Reverse Leakage @V <sub>RWM</sub>
(UNI)	(BI)	V <sub>RWM</sub> (V)	V <sub>BR MIN</sub> (V)	V <sub>BR MAX</sub> (V)	I <sub>T</sub> (mA)	V <sub>C</sub> (V)	I <sub>PP</sub> (A)	I <sub>R</sub> (uA)
1.5KE39	1.5KE39C	31.6	35.1	42.9	1.0	56.4	27.0	5.0
1.5KE39A	1.5KE39CA	33.3	37.1	41.0	1.0	53.9	28.2	5.0
1.5KE43	1.5KE43C	34.8	38.7	47.3	1.0	61.9	24.6	5.0
1.5KE43A	1.5KE43CA	36.8	40.9	45.2	1.0	59.3	25.6	5.0
1.5KE47	1.5KE47C	38.1	42.3	51.7	1.0	67.8	22.4	5.0
1.5KE47A	1.5KE47CA	40.2	44.7	49.4	1.0	64.8	23.5	5.0
1.5KE51	1.5KE51C	41.3	45.9	56.1	1.0	73.5	20.7	5.0
1.5KE51A	1.5KE51CA	43.6	48.5	53.6	1.0	70.1	21.7	5.0
1.5KE56	1.5KE56C	45.4	50.4	61.6	1.0	80.5	18.9	5.0
1.5KE56A	1.5KE56CA	47.8	53.2	58.8	1.0	77.0	19.7	5.0
1.5KE62	1.5KE62C	50.2	55.8	68.2	1.0	89.0	17.1	5.0
1.5KE62A	1.5KE62CA	53.0	58.9	65.1	1.0	85.0	17.9	5.0
1.5KE68	1.5KE68C	55.1	61.2	74.8	1.0	98.0	13.5	5.0
1.5KE68A	1.5KE68CA	58.1	64.6	71.4	1.0	92.0	16.5	5.0
1.5KE75	1.5KE75C	60.7	67.5	82.5	1.0	108	14.1	5.0
1.5KE75A	1.5KE75CA	64.1	71.3	78.8	1.0	103	14.8	5.0
1.5KE82	1.5KE82C	66.4	73.8	90.2	1.0	118	12.9	5.0
1.5KE82A	1.5KE82CA	70.1	77.9	86.1	1.0	113	13.5	5.0
1.5KE91	1.5KE91C	73.7	81.9	100	1.0	131	11.6	5.0
1.5KE91A	1.5KE91CA	77.8	86.5	95.5	1.0	125	12.2	5.0
1.5KE100	1.5KE100C	81.0	90.0	110	1.0	144	10.6	5.0
1.5KE100A	1.5KE100CA	85.5	95.0	105	1.0	137	11.1	5.0
1.5KE110	1.5KE110C	89.2	99.0	121	1.0	158	9.6	5.0
1.5KE110A	1.5KE110CA	94.0	105	116	1.0	152	10.0	5.0
1.5KE120	1.5KE120C	97.2	108	132	1.0	173	8.7	5.0
1.5KE120A	1.5KE120CA	102	114	126	1.0	165	9.2	5.0
1.5KE130	1.5KE130C	105	117	143	1.0	187	8.1	5.0
1.5KE130A	1.5KE130CA	111	124	137	1.0	179	8.5	5.0
1.5KE150	1.5KE150C	121	135	165	1.0	215	7.1	5.0
1.5KE150A	1.5KE150CA	128	143	158	1.0	207	7.3	5.0
1.5KE160	1.5KE160C	130	144	176	1.0	230	6.6	5.0
1.5KE160A	1.5KE160CA	136	152	168	1.0	219	6.9	5.0
1.5KE170	1.5KE170C	138	153	187	1.0	244	6.2	5.0
1.5KE170A	1.5KE170CA	145	162	179	1.0	234	6.5	5.0
1.5KE180	1.5KE180C	146	162	198	1.0	258	5.9	5.0
1.5KE180A	1.5KE180CA	154	171	189	1.0	246	6.2	5.0



TYPE		Reverse Stand-Off Voltage	Breakdown Voltage Min. @I <sub>T</sub>	Breakdown Voltage Max. @ I <sub>T</sub>	Test Current	Maximum Clamping Voltage @I <sub>PP</sub>	Peak Pulse Current	Reverse Leakage @V <sub>RWM</sub>
(UNI)	(BI)	V <sub>RWM</sub> (V)	V <sub>BR</sub> MIN(V)	V <sub>BR</sub> MAX(V)	I <sub>T</sub> (mA)	V <sub>C</sub> (V)	I <sub>PP</sub> (A)	I <sub>R</sub> (uA)
1.5KE200	1.5KE200C	162	180	220	1.0	287	5.3	5.0
1.5KE200A	1.5KE200CA	171	190	210	1.0	274	5.5	5.0
1.5KE220	1.5KE220C	175	198	242	1.0	344	4.4	5.0
1.5KE220A	1.5KE220CA	185	209	231	1.0	328	4.6	5.0
1.5KE250	1.5KE250C	202	225	275	1.0	360	4.2	5.0
1.5KE250A	1.5KE250CA	214	237	263	1.0	344	4.4	5.0
1.5KE300	1.5KE300C	243	270	330	1.0	430	3.5	5.0
1.5KE300A	1.5KE300CA	256	285	315	1.0	414	3.7	5.0
1.5KE350	1.5KE350C	284	315	385	1.0	504	3.0	5.0
1.5KE350A	1.5KE350CA	300	333	368	1.0	482	3.2	5.0
1.5KE400	1.5KE400C	324	360	440	1.0	574	2.6	5.0
1.5KE400A	1.5KE400CA	342	380	420	1.0	548	2.8	5.0
1.5KE440	1.5KE440C	356	396	484	1.0	631	2.4	5.0
1.5KE440A	1.5KE440CA	376	418	462	1.0	600	2.5	5.0
1.5KE500	1.5KE500C	406	450	550	1.0	720	2.08	5.0
1.5KE500A	1.5KE500CA	427.5	475	525	1.0	690	2.17	5.0
1.5KE520	1.5KE520C	422.2	468	572	1.0	748.8	2.00	5.0
1.5KE520A	1.5KE520CA	444.6	494	546	1.0	717.6	2.09	5.0
1.5KE550	1.5KE550C	446.6	495	605	1.0	792	1.89	5.0
1.5KE550A	1.5KE550CA	470.3	522.50	577.50	1.0	759	1.98	5.0
1.5KE600	1.5KE600C	487.2	540	660	1.0	864	1.74	5.0
1.5KE600A	1.5KE600CA	513	570	630	1.0	828	1.81	5.0

## Ratings and Characteristic Curves $T_A=25^\circ\text{C}$ unless otherwise noted

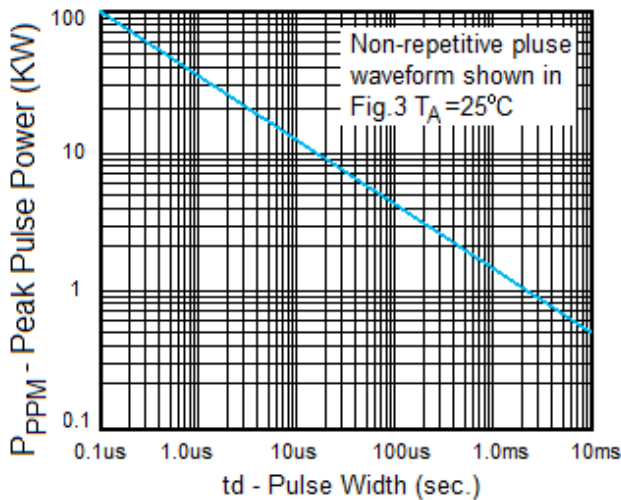


Fig. 1 Peak Pulse Power Rating

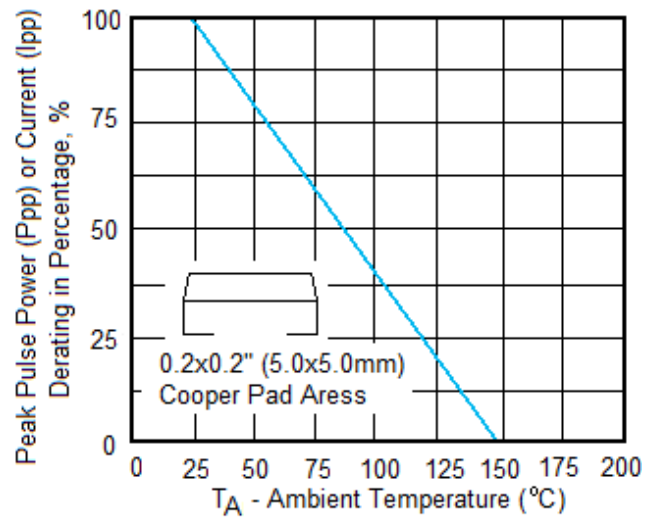


Fig.2 Pulse Derating Curve

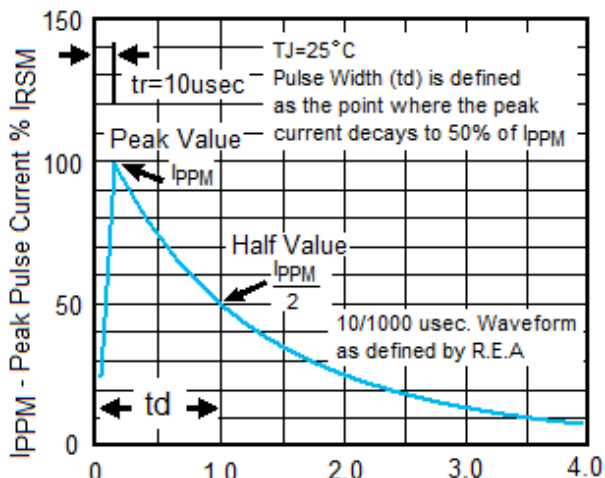


Fig.3 Pulse Waveform

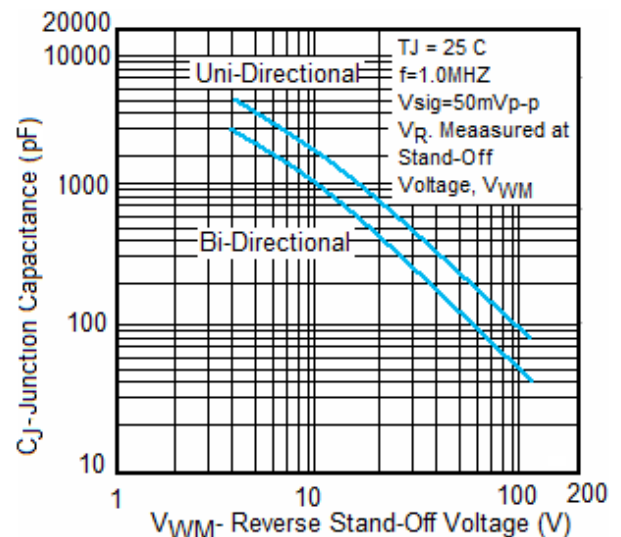


Fig. 4- Typical Junction Capacitance

## X-ON Electronics

Largest Supplier of Electrical and Electronic Components

*Click to view similar products for [ESD Suppressors / TVS Diodes](#) category:*

*Click to view products by [SUNMATE](#) manufacturer:*

Other Similar products are found below :

[60KS200C](#) [D18V0L1B2LP-7B](#) [D5V0F4U5P5-7](#) [NTE4902](#) [P4KE27CA](#) [P6KE11CA](#) [P6KE8.2A](#) [SA60CA](#) [SA64CA](#) [SMBJ12CATR](#)  
[SMBJ33CATR](#) [SMBJ6.5A](#) [SMBJ8.0A](#) [ESD101-B1-02ELS](#) [E6327](#) [ESD112-B1-02EL](#) [E6327](#) [ESD7451N2T5G](#) [19180-510](#) [CPDT-5V0USP-](#)  
[HF](#) [3.0SMCJ33CA-F](#) [3.0SMCJ36A-F](#) [HSPC16701B02TP](#) [JANTX1N6126A](#) [D3V3Q1B2DLP3-7](#) [D55V0M1B2WS-7](#) [SCM1293A-04SO](#)  
[ESD200-B1-CSP0201](#) [E6327](#) [SM12-7](#) [CEN955](#) [W/DATA](#) [VESD12A1A-HD1-GS08](#) [CPDQC5V0-HF](#) [D1213A-01LP4-7B](#) [ESD101-B1-02EL](#)  
[E6327](#) [AOZ8808DI-03](#) [5KP15A](#) [5KP48A](#) [5KP90A](#) [ESD3V3D7-TP](#) [15KPA36A-LF](#) [P4KE56CA](#) [P4KE68A](#) [P4KE91CATR](#) [P6KE120A](#)  
[P6KE13CA](#) [P6KE43CA](#) [P6KE6.8CA](#) [P6KE8.2](#) [P6SMBJ20CA](#) [JANTX1N6072A](#) [SR2835ESKG](#) [SA90CA](#)