

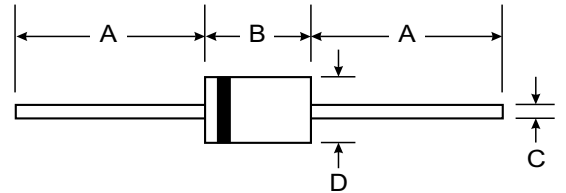
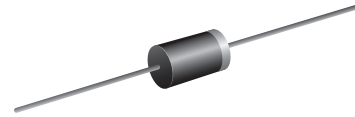
VOLTAGE RANGE: 30 - 100V
CURRENT: 8.0 A

Features

- Metal of silicon rectifier , majority carrier conduction
- Guard ring for transient protection
- Low power loss,high efficiency
- Highcurrent capability,lowVF
- High surge capacity
- Plastic package has UL flammability classification 94V-0

Mechanical Data

- Case: DO-201AD, Molded Plastic
- Terminals: Plated Leads Solderable per MIL-STD-202, Method 208
- Polarity: Cathode Band
- Weight: 1.2 grams (approx.)
- Mounting Position: Any
- Marking: Type Number



DO-201AD		
Dim	Min	Max
A	25.40	—
B	7.20	9.50
C	1.20	1.30
D	4.80	5.30
All Dimensions in mm		

Maximum Ratings and Electrical Characteristics T_A = 25°C unless otherwise specified

Single phase, half wave, 60Hz, resistive or inductive load. For capacitive load, derate current by 20%.

Characteristic	Symbol	80SQ030	80SQ035	80SQ040	80SQ045	80SQ050	80SQ060	80SQ080	80SQ100	Unit	
Maximum Recurrent Peak Reverse Voltage	V _{RRM}	30	35	40	45	50	60	80	100	V	
Maximum RMS Voltage	V _{RMS}	21	24.5	28	31.5	35	42	56	70	V	
Maximum DC Blocking Voltage	V _{DC}	30	35	40	45	50	60	80	100	V	
Maximum Average Forward Rectified Current@T _c =95 °C	I _(AV)	8.0								A	
Peak Forward Surge Current 8.3ms single half sine-wave super imposed on rated load(JEDEC Method)	I _{FSM}	380								A	
Peak Forward Voltage at 8.0ADC(Note1)	V _F	0.55				0.7		0.8		V	
Maximum DC Reverse Current @T _j =25°C at Rated DC Bolcking Voltage @T _j =100°C	I _R	0.5					50				mA
Tyical Junction Capacitance (Note2)	C _J	900									PF
Tyical Thermal Resistance (Note3)	R _{θJC}	8.0									°C/w
Operating Temperature Range	T _J	-55 to+150									°C
Storage Temperature Range	T _{STG}	-55 to+150									°C

NOTES:1.300us Pulse Width, 2%Dudy Cycle.
 2.Measured at 1.0 MHZ and applied reverse voltage of 4.0VDC.
 3.Thermal Resistance Junction to Case.

FIG.1-FORWARD CURRENT DERATING CURVE

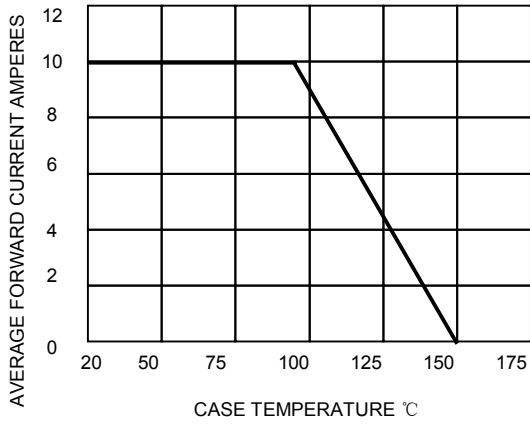


FIG.2-MAXIMUM NON-REPETITIVE SURGE

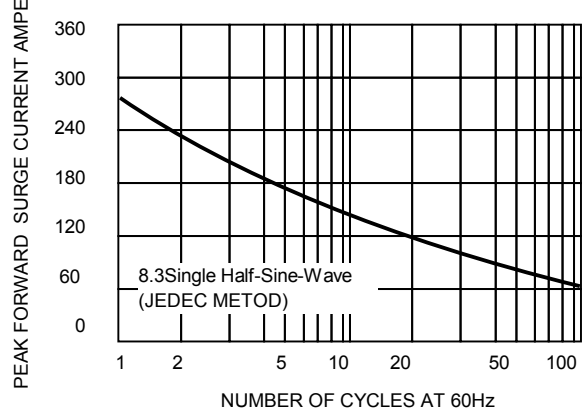


FIG.3-TYPICAL REVERSE CHARACTERISTICS

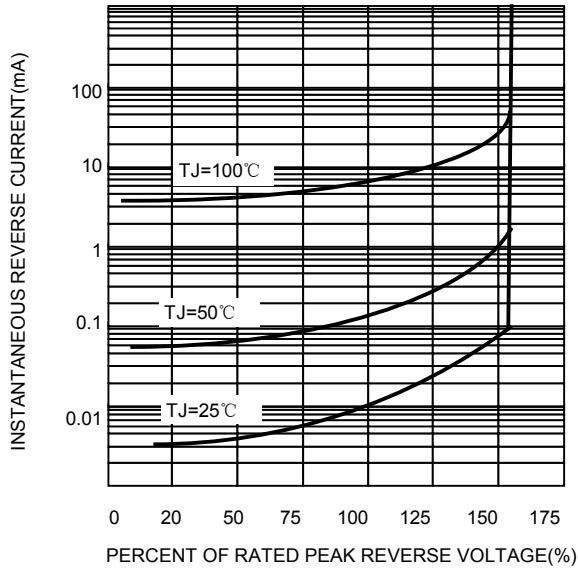


FIG.4-TYPICAL FORWARD CHARACTERISTICS

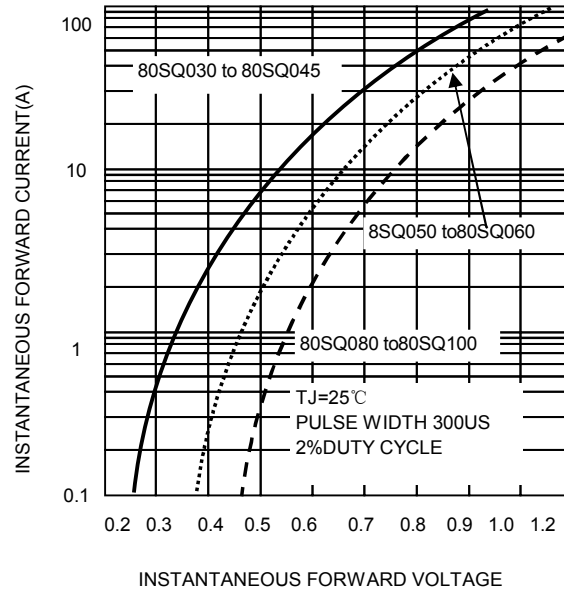
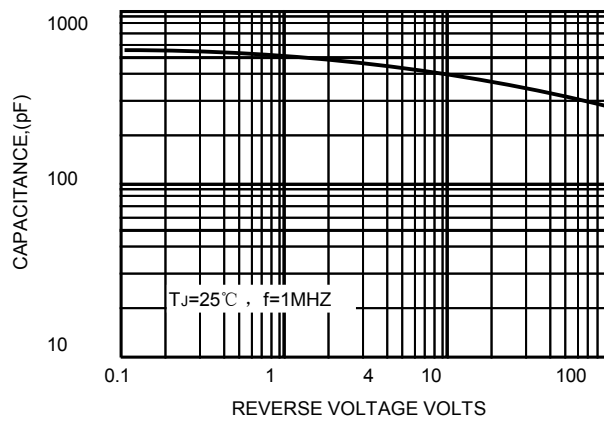


FIG.5-TYPICAL JUNCTION CAPACITANCE



X-ON Electronics

Largest Supplier of Electrical and Electronic Components

Click to view similar products for [Schottky Diodes & Rectifiers](#) category:

Click to view products by [SUNMATE](#) manufacturer:

Other Similar products are found below :

[MA4E2039](#) [MA4E2508M-1112](#) [MBR1545CT](#) [MMBD301M3T5G](#) [RB160M-50TR](#) [D83C](#) [BAS16E6433HTMA1](#) [BAT 54-02LRH E6327](#)
[NRVBAF360T3G](#) [NSR05F40QNXT5G](#) [NTE555](#) [JANS1N6640](#) [SK310-T](#) [SS3003CH-TL-E](#) [GA01SHT18](#) [CRS10I30A\(TE85L,QM](#)
[MA4E2501L-1290](#) [MBRA140TRPBF](#) [MBRB30H30CT-1G](#) [BAT 15-04R E6152](#) [JANTX1N5712-1](#) [DMJ3940-000](#) [SB007-03C-TB-E](#)
[SK33B-TP](#) [NRVBB20100CTT4G](#) [NRVBM120LT1G](#) [NTSB30U100CT-1G](#) [VS-6CWQ10FNHM3](#) [CRG04\(T5L,TEMQ\)](#) [ACDBA1100LR-HF](#)
[ACDBA1200-HF](#) [ACDBA240-HF](#) [ACDBA3100-HF](#) [CDBQC0530L-HF](#) [CDBQC0240LR-HF](#) [ACDBA260LR-HF](#) [ACDBA1100-HF](#)
[MA4E2502L-1246](#) [10BQ015-M3/5BT](#) [NRVBM120ET1G](#) [CRS08TE85LQM](#) [PMAD1108-LF](#) [B120Q-13-F](#) [1N5819T-G](#) [B0530WSQ-7-F](#)
[PDS1040Q-13](#) [B160BQ-13-F](#) [SDM05U20CSP-7](#) [B140S1F-7](#) [HSM560Je3/TR13](#)